

T5S, R95W, 6th P.M.

W.C. 1916 Brass
Cap 2.3' High, Post
Lat: 39.594056
Long: 108.068661

EnCana OIL & GAS (USA) INC.

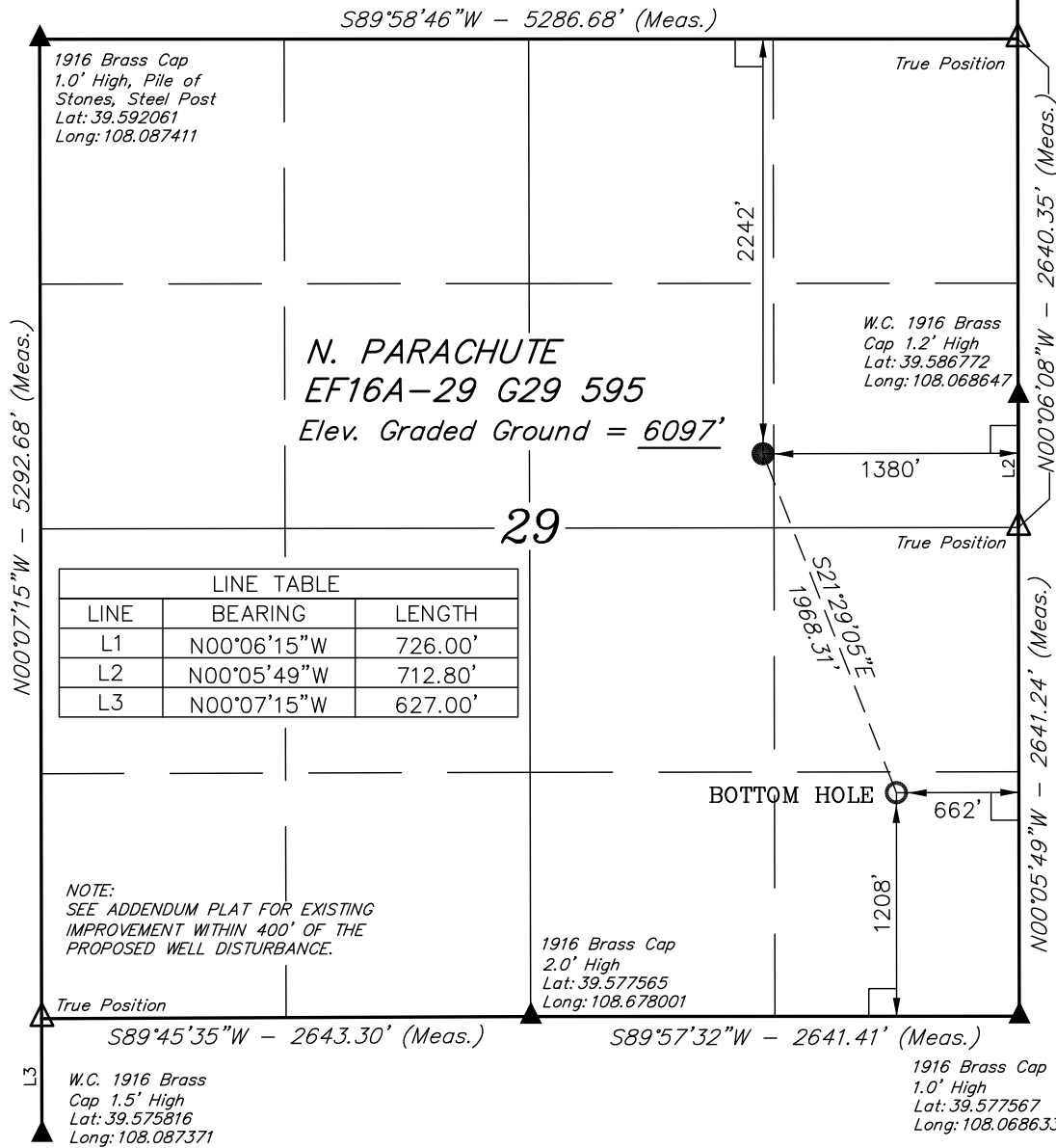
Well location, N. PARACHUTE EF16A-29 G29 595, located as shown in the SW 1/4 NE 1/4 of Section 29, T5S, R95W, 6th P.M., Garfield County, Colorado.

BASIS OF ELEVATION

SPOT ELEVATION AT THE NORTHWEST CORNER OF SECTION 30, T5S, R95W, 6th P.M. TAKEN FROM THE FORKED GULCH QUADRANGLE, COLORADO, GARFIELD COUNTY, 7.5 MINUTE SERIES (TOPOGRAPHICAL MAP) PUBLISHED BY THE UNITED STATES DEPARTMENT OF THE INTERIOR, GEOLOGICAL SURVEY. SAID ELEVATION IS MARKED AS BEING 5966 FEET.

BASIS OF BEARINGS

BASIS OF BEARINGS IS A G.P.S. OBSERVATION.



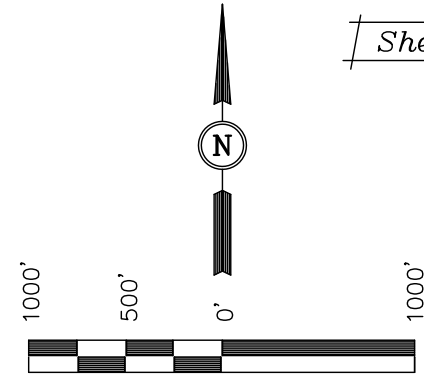
LINE TABLE		
LINE	BEARING	LENGTH
L1	N00°06'15"W	726.00'
L2	N00°05'49"W	712.80'
L3	N00°07'15"W	627.00'

NOTE:
SEE ADDENDUM PLAT FOR EXISTING IMPROVEMENT WITHIN 400' OF THE PROPOSED WELL DISTURBANCE.

1916 Brass Cap
2.0' High
Lat: 39.577565
Long: 108.678001

1916 Brass Cap
1.0' High
Lat: 39.577567
Long: 108.068633

Sheet 1g of 11



SCALE

CERTIFICATE

THIS IS TO CERTIFY THAT THE ABOVE PLAT WAS PREPARED FROM FIELD NOTES OF ACTUAL SURVEYS MADE BY ME OR UNDER MY SUPERVISION AND THAT THE SAME ARE TRUE AND CORRECT TO THE BEST OF MY KNOWLEDGE AND BELIEF.

Robert L. ...
1749

REGISTERED LAND SURVEYOR
REGISTRATION NO. 1749
STATE OF COLORADO

Revised: 06-30-10 D.R.B.
Revised: 06-10-10 D.R.B.

UINTAH ENGINEERING & LAND SURVEYING 85 SOUTH 200 EAST - VERNAL, UTAH 84078 (435) 789-1017		
SCALE 1" = 1000'	DATE SURVEYED: 02-13-08	DATE DRAWN: 04-22-08
PARTY G.O. D.S. D.R.B.	REFERENCES G.L.O. PLAT	
WEATHER COLD	FILE EnCana OIL & GAS (USA) INC.	

LEGEND:

- = 90° SYMBOL
- = PROPOSED WELL HEAD.
- = SECTION CORNERS LOCATED.

PDOP = 5.0	
NAD 83 (TARGET BOTTOM HOLE) LATITUDE = 39°34'51.18" (39.580883) LONGITUDE = 108°04'15.55" (108.070986)	NAD 83 (SURFACE LOCATION) LATITUDE = 39°35'09.28" (39.585911) LONGITUDE = 108°04'24.75" (108.073542)
NAD 27 (TARGET BOTTOM HOLE) LATITUDE = 39°34'51.26" (39.580906) LONGITUDE = 108°04'13.27" (108.070353)	NAD 27 (SURFACE LOCATION) LATITUDE = 39°35'09.36" (39.585933) LONGITUDE = 108°04'22.47" (108.072908)