

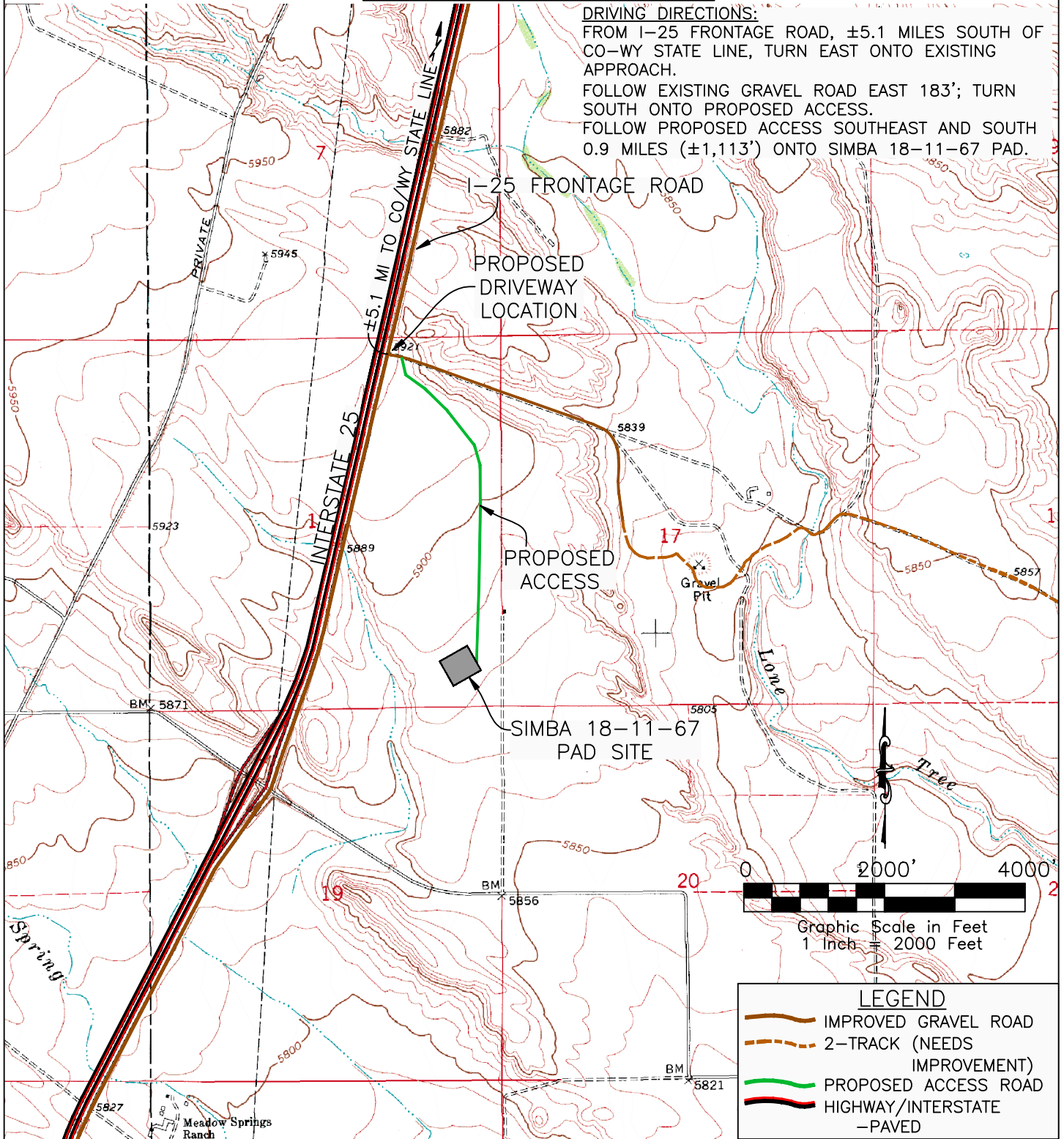
ACCESS ROAD MAP SIMBA 18-11-67

DRIVING DIRECTIONS:

FROM I-25 FRONTAGE ROAD, ± 5.1 MILES SOUTH OF CO-WY STATE LINE, TURN EAST ONTO EXISTING APPROACH.

FOLLOW EXISTING GRAVEL ROAD EAST 183'; TURN SOUTH ONTO PROPOSED ACCESS.

FOLLOW PROPOSED ACCESS SOUTHEAST AND SOUTH 0.9 MILES ($\pm 1,113'$) ONTO SIMBA 18-11-67 PAD.




WESTERN LAND SERVICES
Sheridan, WY 82801 (307)673-1817

DP: L... \Slawson\Permitting_Packets\SIMBA Date: 7/12/2010

SLAWSON EXPLORATION COMPANY, INC
SIMBA 18-11-67

SL: SE1/4 SE1/4, SECTION 18, T11N R67W
BL: NW1/4 SW1/4, SECTION 18, T11N R67W
6TH PM, WELD COUNTY, COLORADO