

# LOCATION DRAWING SIMBA 18-11-67

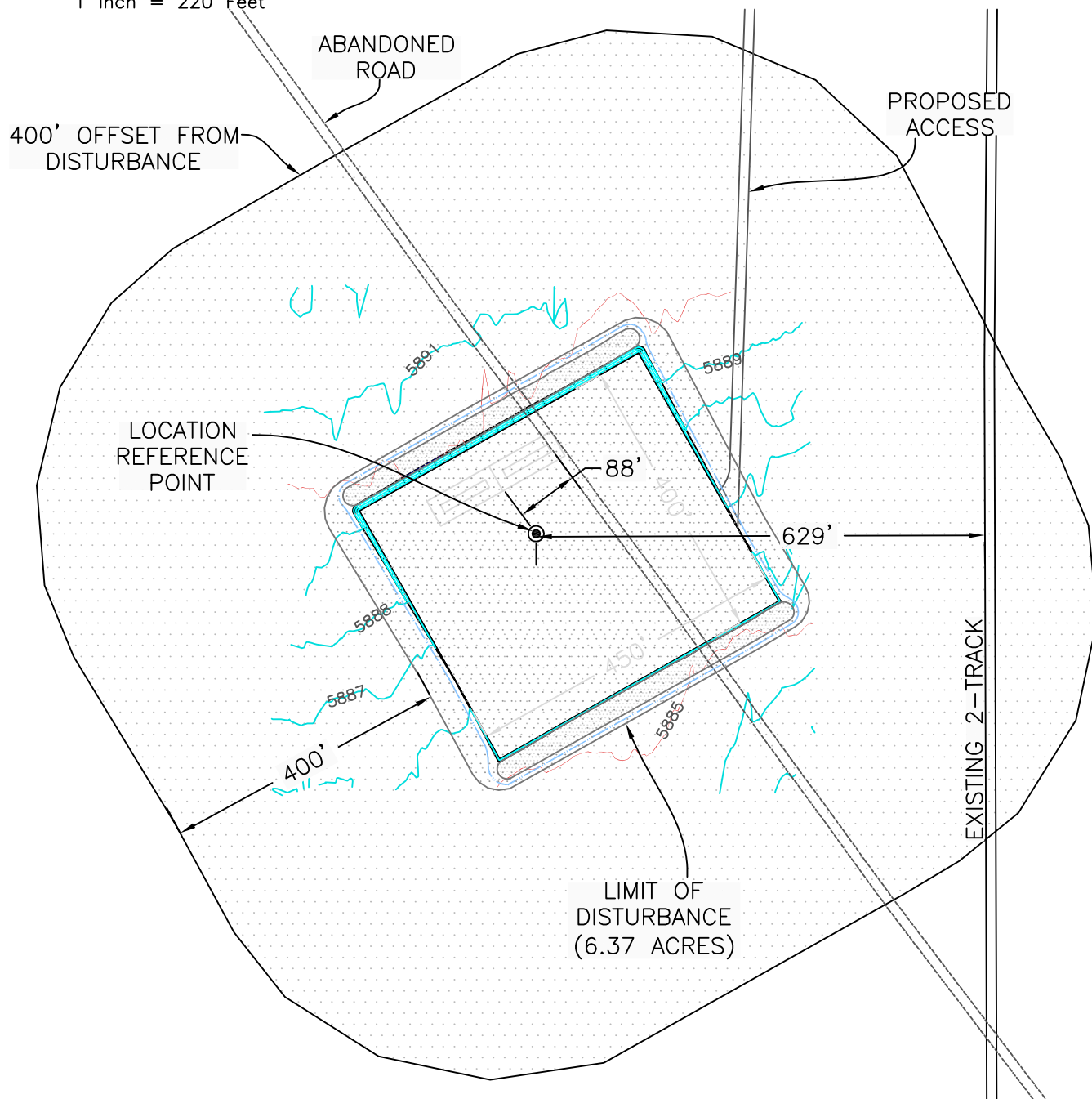
**VEGETATION:**  
NATIVE GRASSLAND  
**SURFACE USE:**  
RANGELAND



Graphic Scale in Feet  
1 Inch = 220 Feet

## SIMBA 18-11-67 WELLHEAD

LATITUDE: 40.91548  
LONGITUDE: -104.92737  
FOOTAGE: 605' FSL 605' FEL  
GROUND ELEV: 5888'  
PDOP: 2.4  
INSTRUMENT OPERATOR:  
NICK ROADIFER



  
**WESTERN LAND SERVICES**  
Sheridan, WY 82801 (307)673-1817

DP: L:\...Slawson\Permitting\_Packets\SIMBA Date: 7/12/2010

SLAWSON EXPLORATION COMPANY, INC  
SIMBA 18-11-67

SL: SE1/4 SE1/4, SECTION 18, T11N R67W  
BL: NW1/4 SW1/4, SECTION 18, T11N R67W  
6TH PM, WELD COUNTY, COLORADO