

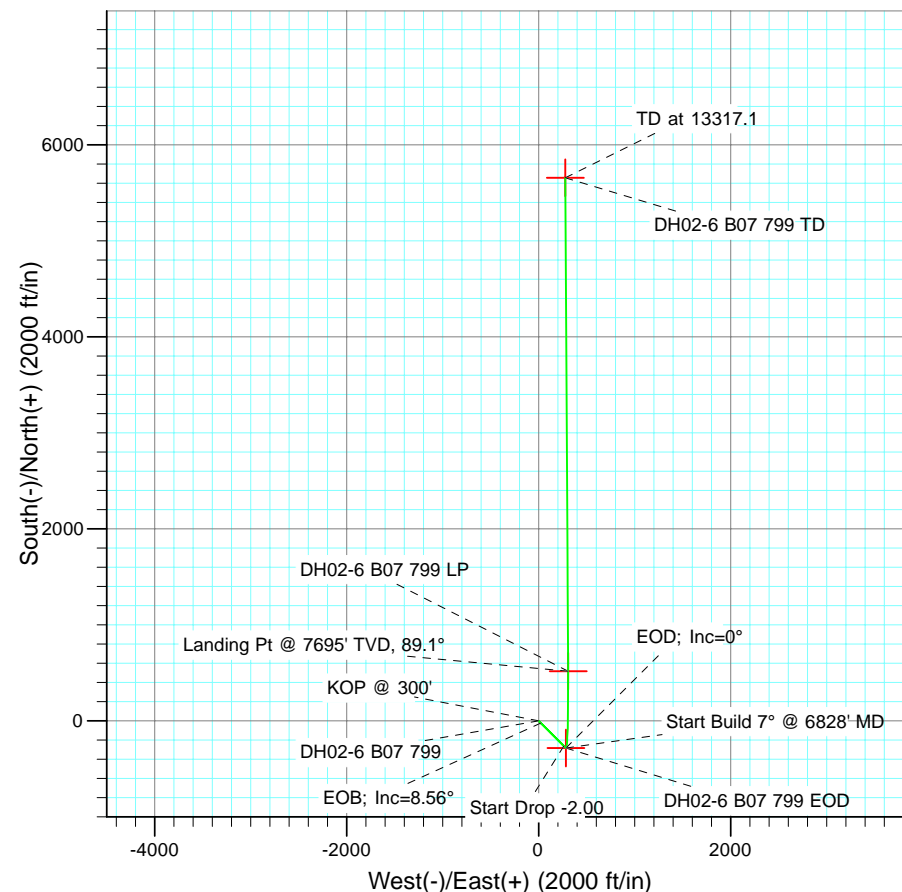
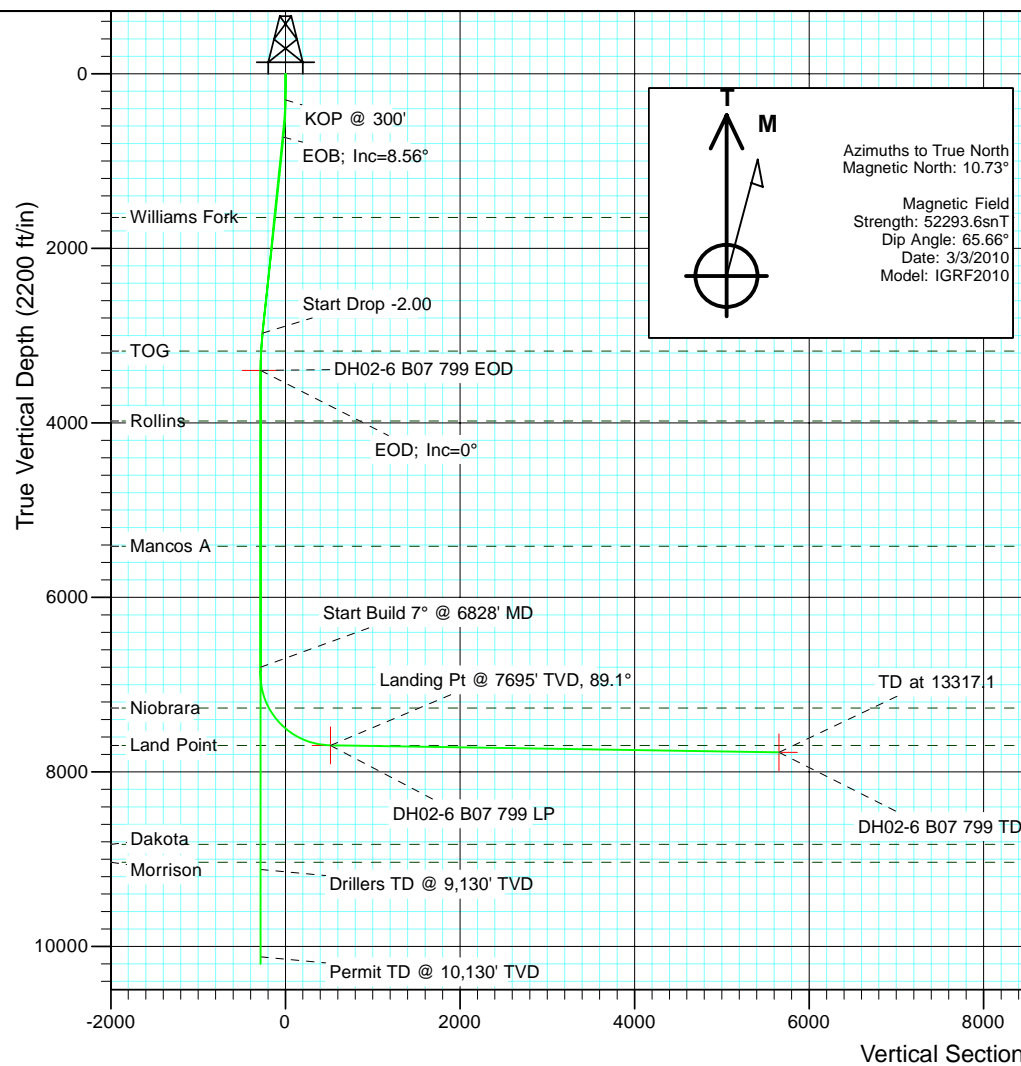


Project: Kimball Mtn
Site: Section 7
Well: DH02-6 B07 799
Wellbore: Hz
Design: Plan #4



SECTION DETAILS

Sec	MD	Inc	Azi	TVD	+N/-S	+E/-W	Dleg	TFace	VSec	Target
1	0.0	0.00	0.00	0.0	0.0	0.0	0.00	0.00	0.0	
2	300.0	0.00	0.00	300.0	0.0	0.0	0.00	0.00	0.0	
3	728.2	8.56	134.73	726.6	-22.5	22.7	2.00	134.73	-22.6	
4	3000.3	8.56	134.73	2973.4	-260.6	263.1	0.00	0.00	-262.1	
5	3428.5	0.00	0.00	3400.0	-283.1	285.8	2.00	180.00	-284.7	DH02-6 B07 799 EOD
6	6828.5	0.00	0.00	6800.0	-283.1	285.8	0.00	0.00	-284.7	
7	6873.3	3.15	145.14	6844.8	-284.1	286.5	7.04	145.14	-285.7	
8	8176.0	89.11	359.68	7695.0	516.4	308.1	7.04	-145.45	514.7	DH02-6 B07 799 LP
9	13317.1	89.11	359.68	7775.0	5656.8	279.2	0.00	0.00	5655.2	DH02-6 B07 799 TD



Plan #4 DH02-6 B07 799 1050xx; LR					
WELL @ 6670.0ft (Original Well Elev) North American Datum 1983 Well DH02-6 B07 799, True North					
Type User	Target	No Target (Freehand)	Azimuth	359.68	Origin Type N/S
					Slot
					N/S
					0.0
					E/W From TVD
					0.0
					0.0
Name	TVD	+N/-S	+E/-W	Latitude	Longitude
DH02-6 B07 799 LP	7695.0	516.4	308.1	39° 28' 9.19 N	108° 28' 51.57 W
DH02-6 B07 799 TD	7775.0	5656.8	279.2	39° 29' 0.00 N	108° 28' 51.94 W

Cathedral Energy Services

Planning Report

Database:	EDM 5000.1 US Multi Users DB	Local Co-ordinate Reference:	Well DH02-6 B07 799
Company:	EnCana Oil & Gas (USA) Inc	TVD Reference:	WELL @ 6670.0ft (Original Well Elev)
Project:	Kimball Mtn	MD Reference:	WELL @ 6670.0ft (Original Well Elev)
Site:	Section 7	North Reference:	True
Well:	DH02-6 B07 799	Survey Calculation Method:	Minimum Curvature
Wellbore:	Hz		
Design:	Plan #4		

Project	Kimball Mtn		
Map System:	US State Plane 1983	System Datum:	Mean Sea Level
Geo Datum:	North American Datum 1983		
Map Zone:	Colorado Central Zone		

Site	Section 7			
Site Position:		Northing:	1,609,095.96 ft	Latitude: 39° 28' 4.09 N
From:	Lat/Long	Easting:	2,158,273.04 ft	Longitude: 108° 28' 55.50 W
Position Uncertainty:	0.0 ft	Slot Radius:	13.200 in	Grid Convergence: -1.88 °

Well	DH02-6 B07 799			
Well Position	+N/-S	0.0 ft	Northing:	1,609,095.95 ft
	+E/-W	0.0 ft	Easting:	2,158,273.04 ft
Position Uncertainty		0.0 ft	Wellhead Elevation:	ft
			Ground Level:	6,648.0 ft

Wellbore	Hz				
Magnetics	Model Name	Sample Date	Declination (°)	Dip Angle (°)	Field Strength (nT)
	IGRF2010	3/3/2010	10.73	65.66	52,294

Design	Plan #4			
Audit Notes:				
Version:	Phase:	PLAN	Tie On Depth:	0.0
Vertical Section:	Depth From (TVD) (ft)	+N/-S (ft)	+E/-W (ft)	Direction (°)
	0.0	0.0	0.0	359.68

Plan Sections										
Measured Depth (ft)	Inclination (°)	Azimuth (°)	Vertical Depth (ft)	+N/-S (ft)	+E/-W (ft)	Dogleg Rate (°/100ft)	Build Rate (°/100ft)	Turn Rate (°/100ft)	TFO (°)	Target
0.0	0.00	0.00	0.0	0.0	0.0	0.00	0.00	0.00	0.00	
300.0	0.00	0.00	300.0	0.0	0.0	0.00	0.00	0.00	0.00	
728.2	8.56	134.73	726.6	-22.5	22.7	2.00	2.00	0.00	134.73	
3,000.3	8.56	134.73	2,973.4	-260.6	263.1	0.00	0.00	0.00	0.00	
3,428.5	0.00	0.00	3,400.0	-283.1	285.8	2.00	-2.00	0.00	180.00	DH02-6 B07 799 EOC
6,828.5	0.00	0.00	6,800.0	-283.1	285.8	0.00	0.00	0.00	0.00	
6,873.3	3.15	145.14	6,844.8	-284.1	286.5	7.04	7.04	0.00	145.14	
8,176.0	89.11	359.68	7,695.0	516.4	308.1	7.04	6.60	-11.17	-145.45	DH02-6 B07 799 LP
13,317.1	89.11	359.68	7,775.0	5,656.8	279.2	0.00	0.00	0.00	0.00	DH02-6 B07 799 TD

Cathedral Energy Services

Planning Report

Database:	EDM 5000.1 US Multi Users DB	Local Co-ordinate Reference:	Well DH02-6 B07 799
Company:	EnCana Oil & Gas (USA) Inc	TVD Reference:	WELL @ 6670.0ft (Original Well Elev)
Project:	Kimball Mtn	MD Reference:	WELL @ 6670.0ft (Original Well Elev)
Site:	Section 7	North Reference:	True
Well:	DH02-6 B07 799	Survey Calculation Method:	Minimum Curvature
Wellbore:	Hz		
Design:	Plan #4		

Planned Survey

Measured Depth (ft)	Inclination (°)	Azimuth (°)	Vertical Depth (ft)	+N/-S (ft)	+E/-W (ft)	Vertical Section (ft)	Dogleg Rate (°/100ft)	Build Rate (°/100ft)	Comments / Formations
0.0	0.00	0.00	0.0	0.0	0.0	0.0	0.00	0.00	
100.0	0.00	0.00	100.0	0.0	0.0	0.0	0.00	0.00	
200.0	0.00	0.00	200.0	0.0	0.0	0.0	0.00	0.00	
300.0	0.00	0.00	300.0	0.0	0.0	0.0	0.00	0.00	KOP @ 300'
400.0	2.00	134.73	400.0	-1.2	1.2	-1.2	2.00	2.00	
500.0	4.00	134.73	499.8	-4.9	5.0	-4.9	2.00	2.00	
600.0	6.00	134.73	599.5	-11.0	11.1	-11.1	2.00	2.00	
700.0	8.00	134.73	698.7	-19.6	19.8	-19.7	2.00	2.00	
728.2	8.56	134.73	726.6	-22.5	22.7	-22.6	2.00	2.00	EOB; Inc=8.56°
800.0	8.56	134.73	797.6	-30.0	30.3	-30.2	0.00	0.00	
900.0	8.56	134.73	896.5	-40.5	40.9	-40.7	0.00	0.00	
1,000.0	8.56	134.73	995.4	-51.0	51.4	-51.3	0.00	0.00	
1,100.0	8.56	134.73	1,094.3	-61.4	62.0	-61.8	0.00	0.00	
1,200.0	8.56	134.73	1,193.1	-71.9	72.6	-72.3	0.00	0.00	
1,300.0	8.56	134.73	1,292.0	-82.4	83.2	-82.9	0.00	0.00	
1,400.0	8.56	134.73	1,390.9	-92.9	93.8	-93.4	0.00	0.00	
1,500.0	8.56	134.73	1,489.8	-103.4	104.3	-103.9	0.00	0.00	
1,600.0	8.56	134.73	1,588.7	-113.8	114.9	-114.5	0.00	0.00	
1,659.0	8.56	134.73	1,647.0	-120.0	121.2	-120.7	0.00	0.00	Williams Fork
1,700.0	8.56	134.73	1,687.6	-124.3	125.5	-125.0	0.00	0.00	
1,800.0	8.56	134.73	1,786.5	-134.8	136.1	-135.6	0.00	0.00	
1,900.0	8.56	134.73	1,885.3	-145.3	146.7	-146.1	0.00	0.00	
2,000.0	8.56	134.73	1,984.2	-155.8	157.2	-156.6	0.00	0.00	
2,100.0	8.56	134.73	2,083.1	-166.2	167.8	-167.2	0.00	0.00	
2,200.0	8.56	134.73	2,182.0	-176.7	178.4	-177.7	0.00	0.00	
2,300.0	8.56	134.73	2,280.9	-187.2	189.0	-188.3	0.00	0.00	
2,400.0	8.56	134.73	2,379.8	-197.7	199.6	-198.8	0.00	0.00	
2,500.0	8.56	134.73	2,478.7	-208.2	210.1	-209.3	0.00	0.00	
2,600.0	8.56	134.73	2,577.5	-218.6	220.7	-219.9	0.00	0.00	
2,700.0	8.56	134.73	2,676.4	-229.1	231.3	-230.4	0.00	0.00	
2,800.0	8.56	134.73	2,775.3	-239.6	241.9	-241.0	0.00	0.00	
2,900.0	8.56	134.73	2,874.2	-250.1	252.5	-251.5	0.00	0.00	
3,000.0	8.56	134.73	2,973.1	-260.6	263.0	-262.0	0.00	0.00	
3,000.3	8.56	134.73	2,973.4	-260.6	263.1	-262.1	0.00	0.00	Start Drop -2.00
3,100.0	6.57	134.73	3,072.2	-269.8	272.4	-271.4	2.00	-2.00	
3,200.0	4.57	134.73	3,171.7	-276.7	279.3	-278.2	2.00	-2.00	
3,206.3	4.44	134.73	3,178.0	-277.0	279.6	-278.6	2.00	-2.00	TOG
3,300.0	2.57	134.73	3,271.5	-281.1	283.7	-282.6	2.00	-2.00	
3,400.0	0.57	134.73	3,371.5	-283.0	285.7	-284.6	2.00	-2.00	
3,428.5	0.00	0.00	3,400.0	-283.1	285.8	-284.7	2.00	-2.00	EOD; Inc=0° - DH02-6 B07 799 EOD
3,500.0	0.00	0.00	3,471.5	-283.1	285.8	-284.7	0.00	0.00	
3,600.0	0.00	0.00	3,571.5	-283.1	285.8	-284.7	0.00	0.00	
3,700.0	0.00	0.00	3,671.5	-283.1	285.8	-284.7	0.00	0.00	
3,800.0	0.00	0.00	3,771.5	-283.1	285.8	-284.7	0.00	0.00	
3,900.0	0.00	0.00	3,871.5	-283.1	285.8	-284.7	0.00	0.00	
4,000.0	0.00	0.00	3,971.5	-283.1	285.8	-284.7	0.00	0.00	
4,006.5	0.00	0.00	3,978.0	-283.1	285.8	-284.7	0.00	0.00	Rollins
4,100.0	0.00	0.00	4,071.5	-283.1	285.8	-284.7	0.00	0.00	
4,200.0	0.00	0.00	4,171.5	-283.1	285.8	-284.7	0.00	0.00	
4,300.0	0.00	0.00	4,271.5	-283.1	285.8	-284.7	0.00	0.00	
4,400.0	0.00	0.00	4,371.5	-283.1	285.8	-284.7	0.00	0.00	
4,500.0	0.00	0.00	4,471.5	-283.1	285.8	-284.7	0.00	0.00	

Cathedral Energy Services

Planning Report

Database:	EDM 5000.1 US Multi Users DB	Local Co-ordinate Reference:	Well DH02-6 B07 799
Company:	EnCana Oil & Gas (USA) Inc	TVD Reference:	WELL @ 6670.0ft (Original Well Elev)
Project:	Kimball Mtn	MD Reference:	WELL @ 6670.0ft (Original Well Elev)
Site:	Section 7	North Reference:	True
Well:	DH02-6 B07 799	Survey Calculation Method:	Minimum Curvature
Wellbore:	Hz		
Design:	Plan #4		

Planned Survey									
Measured Depth (ft)	Inclination (°)	Azimuth (°)	Vertical Depth (ft)	+N/-S (ft)	+E/-W (ft)	Vertical Section (ft)	Dogleg Rate (°/100ft)	Build Rate (°/100ft)	Comments / Formations
4,600.0	0.00	0.00	4,571.5	-283.1	285.8	-284.7	0.00	0.00	
4,700.0	0.00	0.00	4,671.5	-283.1	285.8	-284.7	0.00	0.00	
4,800.0	0.00	0.00	4,771.5	-283.1	285.8	-284.7	0.00	0.00	
4,900.0	0.00	0.00	4,871.5	-283.1	285.8	-284.7	0.00	0.00	
5,000.0	0.00	0.00	4,971.5	-283.1	285.8	-284.7	0.00	0.00	
5,100.0	0.00	0.00	5,071.5	-283.1	285.8	-284.7	0.00	0.00	
5,200.0	0.00	0.00	5,171.5	-283.1	285.8	-284.7	0.00	0.00	
5,300.0	0.00	0.00	5,271.5	-283.1	285.8	-284.7	0.00	0.00	
5,400.0	0.00	0.00	5,371.5	-283.1	285.8	-284.7	0.00	0.00	
5,442.5	0.00	0.00	5,414.0	-283.1	285.8	-284.7	0.00	0.00	Mancos A
5,500.0	0.00	0.00	5,471.5	-283.1	285.8	-284.7	0.00	0.00	
5,600.0	0.00	0.00	5,571.5	-283.1	285.8	-284.7	0.00	0.00	
5,700.0	0.00	0.00	5,671.5	-283.1	285.8	-284.7	0.00	0.00	
5,800.0	0.00	0.00	5,771.5	-283.1	285.8	-284.7	0.00	0.00	
5,900.0	0.00	0.00	5,871.5	-283.1	285.8	-284.7	0.00	0.00	
6,000.0	0.00	0.00	5,971.5	-283.1	285.8	-284.7	0.00	0.00	
6,100.0	0.00	0.00	6,071.5	-283.1	285.8	-284.7	0.00	0.00	
6,200.0	0.00	0.00	6,171.5	-283.1	285.8	-284.7	0.00	0.00	
6,300.0	0.00	0.00	6,271.5	-283.1	285.8	-284.7	0.00	0.00	
6,400.0	0.00	0.00	6,371.5	-283.1	285.8	-284.7	0.00	0.00	
6,500.0	0.00	0.00	6,471.5	-283.1	285.8	-284.7	0.00	0.00	
6,600.0	0.00	0.00	6,571.5	-283.1	285.8	-284.7	0.00	0.00	
6,700.0	0.00	0.00	6,671.5	-283.1	285.8	-284.7	0.00	0.00	
6,800.0	0.00	0.00	6,771.5	-283.1	285.8	-284.7	0.00	0.00	
6,828.5	0.00	0.00	6,800.0	-283.1	285.8	-284.7	0.00	0.00	Start Build 7° @ 6828' MD
6,873.3	3.15	145.14	6,844.8	-284.1	286.5	-285.7	7.04	7.04	
6,900.0	1.93	111.54	6,871.4	-284.9	287.3	-286.5	7.04	-4.59	
7,000.0	6.57	15.37	6,971.2	-280.0	290.4	-281.6	7.04	4.64	
7,100.0	13.48	7.13	7,069.6	-262.9	293.4	-264.5	7.04	6.91	
7,200.0	20.48	4.44	7,165.2	-233.8	296.2	-235.5	7.04	7.00	
7,300.0	27.50	3.09	7,256.5	-193.3	298.8	-194.9	7.04	7.02	
7,311.9	28.33	2.97	7,267.0	-187.7	299.1	-189.4	7.04	7.02	Niobrara
7,400.0	34.52	2.25	7,342.2	-141.8	301.1	-143.5	7.04	7.03	
7,500.0	41.55	1.67	7,420.9	-80.3	303.2	-82.0	7.04	7.03	
7,600.0	48.59	1.23	7,491.5	-9.6	305.0	-11.3	7.04	7.03	
7,700.0	55.62	0.87	7,552.8	69.3	306.4	67.6	7.04	7.03	
7,800.0	62.66	0.57	7,604.1	155.1	307.5	153.3	7.04	7.04	
7,900.0	69.69	0.31	7,644.5	246.5	308.2	244.8	7.04	7.04	
8,000.0	76.73	0.07	7,673.3	342.2	308.5	340.4	7.04	7.04	
8,100.0	83.76	359.85	7,690.3	440.6	308.4	438.9	7.04	7.04	
8,176.0	89.11	359.68	7,695.0	516.4	308.1	514.7	7.04	7.04	Landing Pt @ 7695' TVD, 89.1° - Land Point - C
8,200.0	89.11	359.68	7,695.4	540.5	308.0	538.7	0.00	0.00	
8,300.0	89.11	359.68	7,696.9	640.5	307.4	638.7	0.00	0.00	
8,400.0	89.11	359.68	7,698.5	740.4	306.8	738.7	0.00	0.00	
8,500.0	89.11	359.68	7,700.0	840.4	306.3	838.7	0.00	0.00	
8,600.0	89.11	359.68	7,701.6	940.4	305.7	938.7	0.00	0.00	
8,700.0	89.11	359.68	7,703.2	1,040.4	305.2	1,038.7	0.00	0.00	
8,800.0	89.11	359.68	7,704.7	1,140.4	304.6	1,138.7	0.00	0.00	
8,900.0	89.11	359.68	7,706.3	1,240.4	304.0	1,238.7	0.00	0.00	
9,000.0	89.11	359.68	7,707.8	1,340.4	303.5	1,338.6	0.00	0.00	
9,100.0	89.11	359.68	7,709.4	1,440.3	302.9	1,438.6	0.00	0.00	
9,200.0	89.11	359.68	7,710.9	1,540.3	302.3	1,538.6	0.00	0.00	

Cathedral Energy Services

Planning Report

Database:	EDM 5000.1 US Multi Users DB	Local Co-ordinate Reference:	Well DH02-6 B07 799
Company:	EnCana Oil & Gas (USA) Inc	TVD Reference:	WELL @ 6670.0ft (Original Well Elev)
Project:	Kimball Mtn	MD Reference:	WELL @ 6670.0ft (Original Well Elev)
Site:	Section 7	North Reference:	True
Well:	DH02-6 B07 799	Survey Calculation Method:	Minimum Curvature
Wellbore:	Hz		
Design:	Plan #4		

Planned Survey									
Measured Depth (ft)	Inclination (°)	Azimuth (°)	Vertical Depth (ft)	+N/-S (ft)	+E/-W (ft)	Vertical Section (ft)	Dogleg Rate (°/100ft)	Build Rate (°/100ft)	Comments / Formations
9,300.0	89.11	359.68	7,712.5	1,640.3	301.8	1,638.6	0.00	0.00	
9,400.0	89.11	359.68	7,714.0	1,740.3	301.2	1,738.6	0.00	0.00	
9,500.0	89.11	359.68	7,715.6	1,840.3	300.7	1,838.6	0.00	0.00	
9,600.0	89.11	359.68	7,717.2	1,940.3	300.1	1,938.6	0.00	0.00	
9,700.0	89.11	359.68	7,718.7	2,040.3	299.5	2,038.6	0.00	0.00	
9,800.0	89.11	359.68	7,720.3	2,140.2	299.0	2,138.5	0.00	0.00	
9,900.0	89.11	359.68	7,721.8	2,240.2	298.4	2,238.5	0.00	0.00	
10,000.0	89.11	359.68	7,723.4	2,340.2	297.8	2,338.5	0.00	0.00	
10,100.0	89.11	359.68	7,724.9	2,440.2	297.3	2,438.5	0.00	0.00	
10,200.0	89.11	359.68	7,726.5	2,540.2	296.7	2,538.5	0.00	0.00	
10,300.0	89.11	359.68	7,728.1	2,640.2	296.2	2,638.5	0.00	0.00	
10,400.0	89.11	359.68	7,729.6	2,740.2	295.6	2,738.5	0.00	0.00	
10,500.0	89.11	359.68	7,731.2	2,840.2	295.0	2,838.5	0.00	0.00	
10,600.0	89.11	359.68	7,732.7	2,940.1	294.5	2,938.4	0.00	0.00	
10,700.0	89.11	359.68	7,734.3	3,040.1	293.9	3,038.4	0.00	0.00	
10,800.0	89.11	359.68	7,735.8	3,140.1	293.4	3,138.4	0.00	0.00	
10,900.0	89.11	359.68	7,737.4	3,240.1	292.8	3,238.4	0.00	0.00	
11,000.0	89.11	359.68	7,738.9	3,340.1	292.2	3,338.4	0.00	0.00	
11,100.0	89.11	359.68	7,740.5	3,440.1	291.7	3,438.4	0.00	0.00	
11,200.0	89.11	359.68	7,742.1	3,540.1	291.1	3,538.4	0.00	0.00	
11,300.0	89.11	359.68	7,743.6	3,640.0	290.5	3,638.4	0.00	0.00	
11,400.0	89.11	359.68	7,745.2	3,740.0	290.0	3,738.4	0.00	0.00	
11,500.0	89.11	359.68	7,746.7	3,840.0	289.4	3,838.3	0.00	0.00	
11,600.0	89.11	359.68	7,748.3	3,940.0	288.9	3,938.3	0.00	0.00	
11,700.0	89.11	359.68	7,749.8	4,040.0	288.3	4,038.3	0.00	0.00	
11,800.0	89.11	359.68	7,751.4	4,140.0	287.7	4,138.3	0.00	0.00	
11,900.0	89.11	359.68	7,752.9	4,240.0	287.2	4,238.3	0.00	0.00	
12,000.0	89.11	359.68	7,754.5	4,339.9	286.6	4,338.3	0.00	0.00	
12,100.0	89.11	359.68	7,756.1	4,439.9	286.0	4,438.3	0.00	0.00	
12,200.0	89.11	359.68	7,757.6	4,539.9	285.5	4,538.3	0.00	0.00	
12,300.0	89.11	359.68	7,759.2	4,639.9	284.9	4,638.2	0.00	0.00	
12,400.0	89.11	359.68	7,760.7	4,739.9	284.4	4,738.2	0.00	0.00	
12,500.0	89.11	359.68	7,762.3	4,839.9	283.8	4,838.2	0.00	0.00	
12,600.0	89.11	359.68	7,763.8	4,939.9	283.2	4,938.2	0.00	0.00	
12,700.0	89.11	359.68	7,765.4	5,039.9	282.7	5,038.2	0.00	0.00	
12,800.0	89.11	359.68	7,767.0	5,139.8	282.1	5,138.2	0.00	0.00	
12,900.0	89.11	359.68	7,768.5	5,239.8	281.5	5,238.2	0.00	0.00	
13,000.0	89.11	359.68	7,770.1	5,339.8	281.0	5,338.2	0.00	0.00	
13,100.0	89.11	359.68	7,771.6	5,439.8	280.4	5,438.1	0.00	0.00	
13,200.0	89.11	359.68	7,773.2	5,539.8	279.9	5,538.1	0.00	0.00	
13,300.0	89.11	359.68	7,774.7	5,639.8	279.3	5,638.1	0.00	0.00	
13,317.1	89.11	359.68	7,775.0	5,656.8	279.2	5,655.2	0.00	0.00	TD at 13317.1 - DH02-6 B07 799 TD

Cathedral Energy Services

Planning Report

Database:	EDM 5000.1 US Multi Users DB	Local Co-ordinate Reference:	Well DH02-6 B07 799
Company:	EnCana Oil & Gas (USA) Inc	TVD Reference:	WELL @ 6670.0ft (Original Well Elev)
Project:	Kimball Mtn	MD Reference:	WELL @ 6670.0ft (Original Well Elev)
Site:	Section 7	North Reference:	True
Well:	DH02-6 B07 799	Survey Calculation Method:	Minimum Curvature
Wellbore:	Hz		
Design:	Plan #4		

Targets									
Target Name									
- hit/miss target	Dip Angle	Dip Dir.	TVD	+N/-S	+E/-W	Northing	Easting	Latitude	Longitude
- Shape	(°)	(°)	(ft)	(ft)	(ft)	(ft)	(ft)		
DH02-6 B07 799 EOD	0.00	0.00	3,400.0	-283.1	285.8	1,608,803.64	2,158,549.37	39° 28' 1.29 N	108° 28' 51.86 W
- plan hits target center									
- Point									
DH02-6 B07 799 LP	0.00	0.00	7,695.0	516.4	308.1	1,609,601.98	2,158,597.93	39° 28' 9.19 N	108° 28' 51.57 W
- plan hits target center									
- Point									
DH02-6 B07 799 TD	0.00	0.00	7,775.0	5,656.8	279.2	1,614,740.57	2,158,737.74	39° 29' 0.00 N	108° 28' 51.94 W
- plan hits target center									
- Point									

Formations					
Measured Depth	Vertical Depth	Name	Lithology	Dip	Dip Direction
(ft)	(ft)			(°)	(°)
1,659.0	1,647.0	Williams Fork			
3,206.3	3,178.0	TOG			
4,006.5	3,978.0	Rollins			
5,442.5	5,414.0	Mancos A			
7,311.9	7,267.0	Niobrara			
8,176.0	7,695.0	Land Point			

Plan Annotations				
Measured Depth	Vertical Depth	Local Coordinates		Comment
(ft)	(ft)	+N/-S (ft)	+E/-W (ft)	
300.0	300.0	0.0	0.0	KOP @ 300'
728.2	726.6	-22.5	22.7	EOB; Inc=8.56°
3,000.3	2,973.4	-260.6	263.1	Start Drop -2.00
3,428.5	3,400.0	-283.1	285.8	EOD; Inc=0°
6,828.5	6,800.0	-283.1	285.8	Start Build 7° @ 6828' MD
8,176.0	7,695.0	516.5	308.1	Landing Pt @ 7695' TVD, 89.1°
13,317.1	7,775.0	5,656.8	279.2	TD at 13317.1