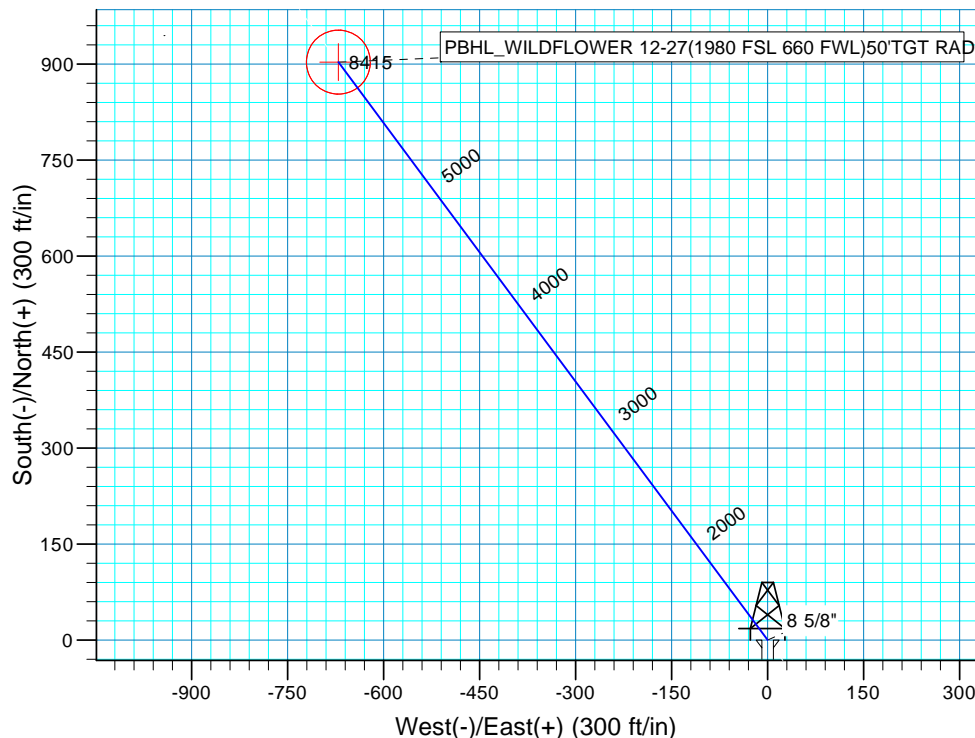
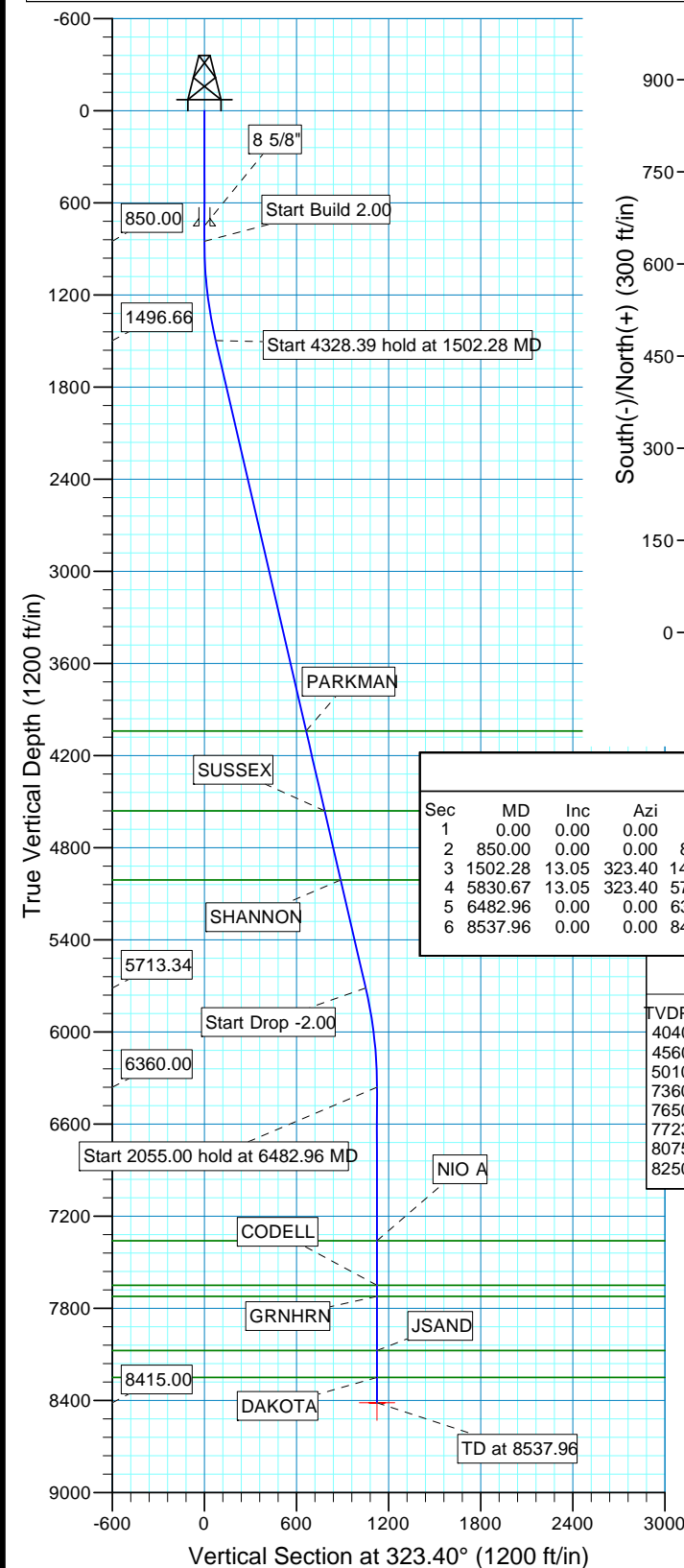
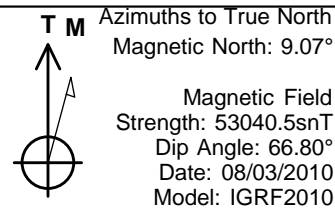


WELL DETAILS: P_WILDFLOWER 12-27

WELL @ 5023.00ft (Original Well Elev) 5008.00					
+N/-S	+E/-W	Northing	Easting	Latitude	Longitude
0.00	0.00	1281582.59	3141524.23	40° 6' 18.821 N	104° 59' 38.580 W

WELLBORE TARGET DETAILS (MAP CO-ORDINATES AND LAT/LONG)

Name	TVD	+N/-S	+E/-W	Northing	Easting	Latitude	Longitude	Shape
PBHL	8415.00	903.07	-670.75	1282481.82	3140848.34	40° 6' 27.745 N	104° 59' 47.213 W	Circle (Radius: 50.00)



SECTION DETAILS

Sec	MD	Inc	Azi	TVD	+N/-S	+E/-W	Dleg	TFace	Vsect	Target
1	0.00	0.00	0.00	0.00	0.00	0.00	0.00	0.00	0.00	
2	850.00	0.00	0.00	850.00	0.00	0.00	0.00	0.00	0.00	
3	1502.28	13.05	323.40	1496.66	59.36	-44.09	2.00	323.40	73.94	
4	5830.67	13.05	323.40	5713.34	843.71	-626.66	0.00	0.00	1050.98	
5	6482.96	0.00	0.00	6360.00	903.07	-670.75	2.00	180.00	1124.92	
6	8537.96	0.00	0.00	8415.00	903.07	-670.75	0.00	0.00	1124.92	PBHL_WILDFLOWER 12-27(1980 FSL 660 FWL)50'TGT R

FORMATION TOP DETAILS

TVDPath	MDPath	Formation
4040.00	4113.00	PARKMAN
4560.00	4646.78	SUSSEX
5010.00	5108.70	SHANNON
7360.00	7482.96	NIO A
7650.00	7772.96	CODELL
7723.00	7845.96	GRNHRN
8075.00	8197.96	JSAND
8250.00	8372.96	DAKOTA

PROJECT DETAILS: COLORADO NORTHERN ZONE - 83

Geodetic System: US State Plane 1983
Datum: North American Datum 1983
Ellipsoid: GRS 1980
Zone: Colorado Northern Zone
Location: SECTION 27 T2N R68W
System Datum: Mean Sea Level
Local North: True

US ROCKIES REGION PLANNING

COLORADO NORTHERN ZONE - 83

WELD_WILDFLOWER 19-27 PAD

P_WILDFLOWER 12-27

P_WILDFLOWER 12-27

Plan: PLAN #1 8-3-10 RHS

Standard Planning Report

03 August, 2010

Database:	EDM5000-RobertS-Local	Local Co-ordinate Reference:	Well P_WILDFLOWER 12-27
Company:	US ROCKIES REGION PLANNING	TVD Reference:	WELL @ 5023.00ft (Original Well Elev)
Project:	COLORADO NORTHERN ZONE - 83	MD Reference:	WELL @ 5023.00ft (Original Well Elev)
Site:	WELD_WILDFLOWER 19-27 PAD	North Reference:	True
Well:	P_WILDFLOWER 12-27	Survey Calculation Method:	Minimum Curvature
Wellbore:	P_WILDFLOWER 12-27		
Design:	PLAN #1 8-3-10 RHS		

Project	COLORADO NORTHERN ZONE - 83, KERR MCGEE OIL & GAS ONSHORE LP		
Map System:	US State Plane 1983	System Datum:	Mean Sea Level
Geo Datum:	North American Datum 1983		
Map Zone:	Colorado Northern Zone		

Site	WELD_WILDFLOWER 19-27 PAD, SECTION 27 T2N R68W			
Site Position:		Northing:	1,281,572.77 usft	Latitude: 40° 6' 18.724 N
From:	Lat/Long	Easting:	3,141,524.29 usft	Longitude: 104° 59' 38.580 W
Position Uncertainty:	0.00 ft	Slot Radius:	13.200 in	Grid Convergence: 0.33 °

Well	P_WILDFLOWER 12-27, 1077 FSL 1332 FWL			
Well Position	+N/-S	9.82 ft	Northing:	1,281,582.59 usft
	+E/-W	0.00 ft	Easting:	3,141,524.23 usft
Position Uncertainty		0.00 ft	Wellhead Elevation:	Ground Level: 5,008.00 ft

Wellbore	P_WILDFLOWER 12-27				
Magnetics	Model Name	Sample Date	Declination (°)	Dip Angle (°)	Field Strength (nT)
	IGRF2010	08/03/2010	9.08	66.80	53,041

Design	PLAN #1 8-3-10 RHS			
Audit Notes:				
Version:	Phase:	PLAN	Tie On Depth:	0.00
Vertical Section:	Depth From (TVD) (ft)	+N/-S (ft)	+E/-W (ft)	Direction (°)
	0.00	0.00	0.00	323.40

Plan Sections										
Measured Depth (ft)	Inclination (°)	Azimuth (°)	Vertical Depth (ft)	+N/-S (ft)	+E/-W (ft)	Dogleg Rate (°/100ft)	Build Rate (°/100ft)	Turn Rate (°/100ft)	TFO (°)	Target
0.00	0.00	0.00	0.00	0.00	0.00	0.00	0.00	0.00	0.00	
850.00	0.00	0.00	850.00	0.00	0.00	0.00	0.00	0.00	0.00	
1,502.28	13.05	323.40	1,496.66	59.36	-44.09	2.00	2.00	0.00	323.40	
5,830.67	13.05	323.40	5,713.34	843.71	-626.66	0.00	0.00	0.00	0.00	
6,482.96	0.00	0.00	6,360.00	903.07	-670.75	2.00	-2.00	0.00	180.00	
8,537.96	0.00	0.00	8,415.00	903.07	-670.75	0.00	0.00	0.00	0.00	PBHL_WILDFLOWEF

Database:	EDM5000-RobertS-Local	Local Co-ordinate Reference:	Well P_WILDFLOWER 12-27
Company:	US ROCKIES REGION PLANNING	TVD Reference:	WELL @ 5023.00ft (Original Well Elev)
Project:	COLORADO NORTHERN ZONE - 83	MD Reference:	WELL @ 5023.00ft (Original Well Elev)
Site:	WELD_WILDFLOWER 19-27 PAD	North Reference:	True
Well:	P_WILDFLOWER 12-27	Survey Calculation Method:	Minimum Curvature
Wellbore:	P_WILDFLOWER 12-27		
Design:	PLAN #1 8-3-10 RHS		

Planned Survey									
Measured Depth (ft)	Inclination (°)	Azimuth (°)	Vertical Depth (ft)	+N/-S (ft)	+E/-W (ft)	Vertical Section (ft)	Dogleg Rate (°/100ft)	Build Rate (°/100ft)	Turn Rate (°/100ft)
0.00	0.00	0.00	0.00	0.00	0.00	0.00	0.00	0.00	0.00
100.00	0.00	0.00	100.00	0.00	0.00	0.00	0.00	0.00	0.00
200.00	0.00	0.00	200.00	0.00	0.00	0.00	0.00	0.00	0.00
300.00	0.00	0.00	300.00	0.00	0.00	0.00	0.00	0.00	0.00
400.00	0.00	0.00	400.00	0.00	0.00	0.00	0.00	0.00	0.00
500.00	0.00	0.00	500.00	0.00	0.00	0.00	0.00	0.00	0.00
600.00	0.00	0.00	600.00	0.00	0.00	0.00	0.00	0.00	0.00
700.00	0.00	0.00	700.00	0.00	0.00	0.00	0.00	0.00	0.00
750.00	0.00	0.00	750.00	0.00	0.00	0.00	0.00	0.00	0.00
8 5/8"									
800.00	0.00	0.00	800.00	0.00	0.00	0.00	0.00	0.00	0.00
850.00	0.00	0.00	850.00	0.00	0.00	0.00	0.00	0.00	0.00
Start Build 2.00									
900.00	1.00	323.40	900.00	0.35	-0.26	0.44	2.00	2.00	0.00
1,000.00	3.00	323.40	999.93	3.15	-2.34	3.93	2.00	2.00	0.00
1,100.00	5.00	323.40	1,099.68	8.75	-6.50	10.90	2.00	2.00	0.00
1,200.00	7.00	323.40	1,199.13	17.14	-12.73	21.35	2.00	2.00	0.00
1,300.00	9.00	323.40	1,298.15	28.31	-21.03	35.27	2.00	2.00	0.00
1,400.00	11.00	323.40	1,396.63	42.25	-31.38	52.63	2.00	2.00	0.00
1,500.00	13.00	323.40	1,494.44	58.94	-43.78	73.42	2.00	2.00	0.00
1,502.28	13.05	323.40	1,496.66	59.36	-44.09	73.94	2.00	2.00	0.00
Start 4328.39 hold at 1502.28 MD									
1,600.00	13.05	323.40	1,591.86	77.06	-57.24	96.00	0.00	0.00	0.00
1,700.00	13.05	323.40	1,689.28	95.19	-70.70	118.57	0.00	0.00	0.00
1,800.00	13.05	323.40	1,786.69	113.31	-84.16	141.14	0.00	0.00	0.00
1,900.00	13.05	323.40	1,884.11	131.43	-97.62	163.71	0.00	0.00	0.00
2,000.00	13.05	323.40	1,981.53	149.55	-111.08	186.29	0.00	0.00	0.00
2,100.00	13.05	323.40	2,078.95	167.67	-124.54	208.86	0.00	0.00	0.00
2,200.00	13.05	323.40	2,176.37	185.79	-138.00	231.43	0.00	0.00	0.00
2,300.00	13.05	323.40	2,273.79	203.91	-151.45	254.01	0.00	0.00	0.00
2,400.00	13.05	323.40	2,371.21	222.03	-164.91	276.58	0.00	0.00	0.00
2,500.00	13.05	323.40	2,468.63	240.16	-178.37	299.15	0.00	0.00	0.00
2,600.00	13.05	323.40	2,566.05	258.28	-191.83	321.72	0.00	0.00	0.00
2,700.00	13.05	323.40	2,663.47	276.40	-205.29	344.30	0.00	0.00	0.00
2,800.00	13.05	323.40	2,760.89	294.52	-218.75	366.87	0.00	0.00	0.00
2,900.00	13.05	323.40	2,858.30	312.64	-232.21	389.44	0.00	0.00	0.00
3,000.00	13.05	323.40	2,955.72	330.76	-245.67	412.02	0.00	0.00	0.00
3,100.00	13.05	323.40	3,053.14	348.88	-259.13	434.59	0.00	0.00	0.00
3,200.00	13.05	323.40	3,150.56	367.00	-272.59	457.16	0.00	0.00	0.00
3,300.00	13.05	323.40	3,247.98	385.12	-286.05	479.73	0.00	0.00	0.00
3,400.00	13.05	323.40	3,345.40	403.25	-299.51	502.31	0.00	0.00	0.00
3,500.00	13.05	323.40	3,442.82	421.37	-312.97	524.88	0.00	0.00	0.00
3,600.00	13.05	323.40	3,540.24	439.49	-326.43	547.45	0.00	0.00	0.00
3,700.00	13.05	323.40	3,637.66	457.61	-339.89	570.03	0.00	0.00	0.00
3,800.00	13.05	323.40	3,735.08	475.73	-353.35	592.60	0.00	0.00	0.00
3,900.00	13.05	323.40	3,832.49	493.85	-366.80	615.17	0.00	0.00	0.00
4,000.00	13.05	323.40	3,929.91	511.97	-380.26	637.74	0.00	0.00	0.00
4,100.00	13.05	323.40	4,027.33	530.09	-393.72	660.32	0.00	0.00	0.00
4,113.00	13.05	323.40	4,040.00	532.45	-395.47	663.25	0.00	0.00	0.00
PARKMAN									
4,200.00	13.05	323.40	4,124.75	548.21	-407.18	682.89	0.00	0.00	0.00
4,300.00	13.05	323.40	4,222.17	566.34	-420.64	705.46	0.00	0.00	0.00
4,400.00	13.05	323.40	4,319.59	584.46	-434.10	728.03	0.00	0.00	0.00
4,500.00	13.05	323.40	4,417.01	602.58	-447.56	750.61	0.00	0.00	0.00

Database:	EDM5000-RobertS-Local	Local Co-ordinate Reference:	Well P_WILDFLOWER 12-27
Company:	US ROCKIES REGION PLANNING	TVD Reference:	WELL @ 5023.00ft (Original Well Elev)
Project:	COLORADO NORTHERN ZONE - 83	MD Reference:	WELL @ 5023.00ft (Original Well Elev)
Site:	WELD_WILDFLOWER 19-27 PAD	North Reference:	True
Well:	P_WILDFLOWER 12-27	Survey Calculation Method:	Minimum Curvature
Wellbore:	P_WILDFLOWER 12-27		
Design:	PLAN #1 8-3-10 RHS		

Planned Survey									
Measured Depth (ft)	Inclination (°)	Azimuth (°)	Vertical Depth (ft)	+N/-S (ft)	+E/-W (ft)	Vertical Section (ft)	Dogleg Rate (°/100ft)	Build Rate (°/100ft)	Turn Rate (°/100ft)
4,600.00	13.05	323.40	4,514.43	620.70	-461.02	773.18	0.00	0.00	0.00
4,646.78	13.05	323.40	4,560.00	629.18	-467.32	783.74	0.00	0.00	0.00
SUSSEX									
4,700.00	13.05	323.40	4,611.85	638.82	-474.48	795.75	0.00	0.00	0.00
4,800.00	13.05	323.40	4,709.27	656.94	-487.94	818.33	0.00	0.00	0.00
4,900.00	13.05	323.40	4,806.68	675.06	-501.40	840.90	0.00	0.00	0.00
5,000.00	13.05	323.40	4,904.10	693.18	-514.86	863.47	0.00	0.00	0.00
5,100.00	13.05	323.40	5,001.52	711.31	-528.32	886.04	0.00	0.00	0.00
5,108.70	13.05	323.40	5,010.00	712.88	-529.49	888.01	0.00	0.00	0.00
SHANNON									
5,200.00	13.05	323.40	5,098.94	729.43	-541.78	908.62	0.00	0.00	0.00
5,300.00	13.05	323.40	5,196.36	747.55	-555.24	931.19	0.00	0.00	0.00
5,400.00	13.05	323.40	5,293.78	765.67	-568.70	953.76	0.00	0.00	0.00
5,500.00	13.05	323.40	5,391.20	783.79	-582.15	976.34	0.00	0.00	0.00
5,600.00	13.05	323.40	5,488.62	801.91	-595.61	998.91	0.00	0.00	0.00
5,700.00	13.05	323.40	5,586.04	820.03	-609.07	1,021.48	0.00	0.00	0.00
5,800.00	13.05	323.40	5,683.46	838.15	-622.53	1,044.05	0.00	0.00	0.00
5,830.67	13.05	323.40	5,713.34	843.71	-626.66	1,050.98	0.00	0.00	0.00
Start Drop -2.00									
5,900.00	11.66	323.40	5,781.06	855.62	-635.50	1,065.81	2.00	-2.00	0.00
6,000.00	9.66	323.40	5,879.33	870.47	-646.53	1,084.30	2.00	-2.00	0.00
6,100.00	7.66	323.40	5,978.18	882.55	-655.51	1,099.36	2.00	-2.00	0.00
6,200.00	5.66	323.40	6,077.50	891.86	-662.42	1,110.95	2.00	-2.00	0.00
6,300.00	3.66	323.40	6,177.17	898.38	-667.27	1,119.08	2.00	-2.00	0.00
6,400.00	1.66	323.40	6,277.05	902.11	-670.03	1,123.72	2.00	-2.00	0.00
6,482.96	0.00	0.00	6,360.00	903.07	-670.75	1,124.92	2.00	-2.00	44.12
Start 2055.00 hold at 6482.96 MD									
6,500.00	0.00	0.00	6,377.04	903.07	-670.75	1,124.92	0.00	0.00	0.00
6,600.00	0.00	0.00	6,477.04	903.07	-670.75	1,124.92	0.00	0.00	0.00
6,700.00	0.00	0.00	6,577.04	903.07	-670.75	1,124.92	0.00	0.00	0.00
6,800.00	0.00	0.00	6,677.04	903.07	-670.75	1,124.92	0.00	0.00	0.00
6,900.00	0.00	0.00	6,777.04	903.07	-670.75	1,124.92	0.00	0.00	0.00
7,000.00	0.00	0.00	6,877.04	903.07	-670.75	1,124.92	0.00	0.00	0.00
7,100.00	0.00	0.00	6,977.04	903.07	-670.75	1,124.92	0.00	0.00	0.00
7,200.00	0.00	0.00	7,077.04	903.07	-670.75	1,124.92	0.00	0.00	0.00
7,300.00	0.00	0.00	7,177.04	903.07	-670.75	1,124.92	0.00	0.00	0.00
7,400.00	0.00	0.00	7,277.04	903.07	-670.75	1,124.92	0.00	0.00	0.00
7,482.96	0.00	0.00	7,360.00	903.07	-670.75	1,124.92	0.00	0.00	0.00
NIO A									
7,500.00	0.00	0.00	7,377.04	903.07	-670.75	1,124.92	0.00	0.00	0.00
7,600.00	0.00	0.00	7,477.04	903.07	-670.75	1,124.92	0.00	0.00	0.00
7,700.00	0.00	0.00	7,577.04	903.07	-670.75	1,124.92	0.00	0.00	0.00
7,772.96	0.00	0.00	7,650.00	903.07	-670.75	1,124.92	0.00	0.00	0.00
CODELL									
7,800.00	0.00	0.00	7,677.04	903.07	-670.75	1,124.92	0.00	0.00	0.00
7,845.96	0.00	0.00	7,723.00	903.07	-670.75	1,124.92	0.00	0.00	0.00
GRNHRN									
7,900.00	0.00	0.00	7,777.04	903.07	-670.75	1,124.92	0.00	0.00	0.00
8,000.00	0.00	0.00	7,877.04	903.07	-670.75	1,124.92	0.00	0.00	0.00
8,100.00	0.00	0.00	7,977.04	903.07	-670.75	1,124.92	0.00	0.00	0.00
8,197.96	0.00	0.00	8,075.00	903.07	-670.75	1,124.92	0.00	0.00	0.00
JSAND									
8,200.00	0.00	0.00	8,077.04	903.07	-670.75	1,124.92	0.00	0.00	0.00

Database:	EDM5000-RobertS-Local	Local Co-ordinate Reference:	Well P_WILDFLOWER 12-27
Company:	US ROCKIES REGION PLANNING	TVD Reference:	WELL @ 5023.00ft (Original Well Elev)
Project:	COLORADO NORTHERN ZONE - 83	MD Reference:	WELL @ 5023.00ft (Original Well Elev)
Site:	WELD_WILDFLOWER 19-27 PAD	North Reference:	True
Well:	P_WILDFLOWER 12-27	Survey Calculation Method:	Minimum Curvature
Wellbore:	P_WILDFLOWER 12-27		
Design:	PLAN #1 8-3-10 RHS		

Planned Survey									
Measured Depth (ft)	Inclination (°)	Azimuth (°)	Vertical Depth (ft)	+N/-S (ft)	+E/-W (ft)	Vertical Section (ft)	Dogleg Rate (°/100ft)	Build Rate (°/100ft)	Turn Rate (°/100ft)
8,300.00	0.00	0.00	8,177.04	903.07	-670.75	1,124.92	0.00	0.00	0.00
8,372.96	0.00	0.00	8,250.00	903.07	-670.75	1,124.92	0.00	0.00	0.00
DAKOTA									
8,400.00	0.00	0.00	8,277.04	903.07	-670.75	1,124.92	0.00	0.00	0.00
8,500.00	0.00	0.00	8,377.04	903.07	-670.75	1,124.92	0.00	0.00	0.00
8,537.96	0.00	0.00	8,415.00	903.07	-670.75	1,124.92	0.00	0.00	0.00
PBHL_WILDFLOWER 12-27(1980 FSL 660 FWL)50'TGT RAD									

Design Targets									
Target Name	Dip Angle (°)	Dip Dir. (°)	TVD (ft)	+N/-S (ft)	+E/-W (ft)	Northing (usft)	Easting (usft)	Latitude	Longitude
- hit/miss target									
- Shape									
PBHL_WILDFLOWER 1	0.00	0.00	8,415.00	903.07	-670.75	1,282,481.82	3,140,848.34	40° 6' 27.745 N	104° 59' 47.213 W
- plan hits target center									
- Circle (radius 50.00)									

Casing Points					
Measured Depth (ft)	Vertical Depth (ft)	Name	Casing Diameter (in)	Hole Diameter (in)	
750.00	750.00	8 5/8"	8.620	11.000	

Formations					
Measured Depth (ft)	Vertical Depth (ft)	Name	Lithology	Dip (°)	Dip Direction (°)
4,113.00	4,040.00	PARKMAN			
4,646.78	4,560.00	SUSSEX			
5,108.70	5,010.00	SHANNON			
7,482.96	7,360.00	NIO A			
7,772.96	7,650.00	CODELL			
7,845.96	7,723.00	GRNHRN			
8,197.96	8,075.00	JSAND			
8,372.96	8,250.00	DAKOTA			

Plan Annotations				
Measured Depth (ft)	Vertical Depth (ft)	+N/-S (ft)	+E/-W (ft)	Comment
850.00	850.00	0.00	0.00	Start Build 2.00
1,502.28	1,496.66	59.36	-44.09	Start 4328.39 hold at 1502.28 MD
5,830.67	5,713.34	843.71	-626.66	Start Drop -2.00
6,482.96	6,360.00	903.07	-670.75	Start 2055.00 hold at 6482.96 MD
8,537.96	8,415.00	903.07	-670.75	TD at 8537.96