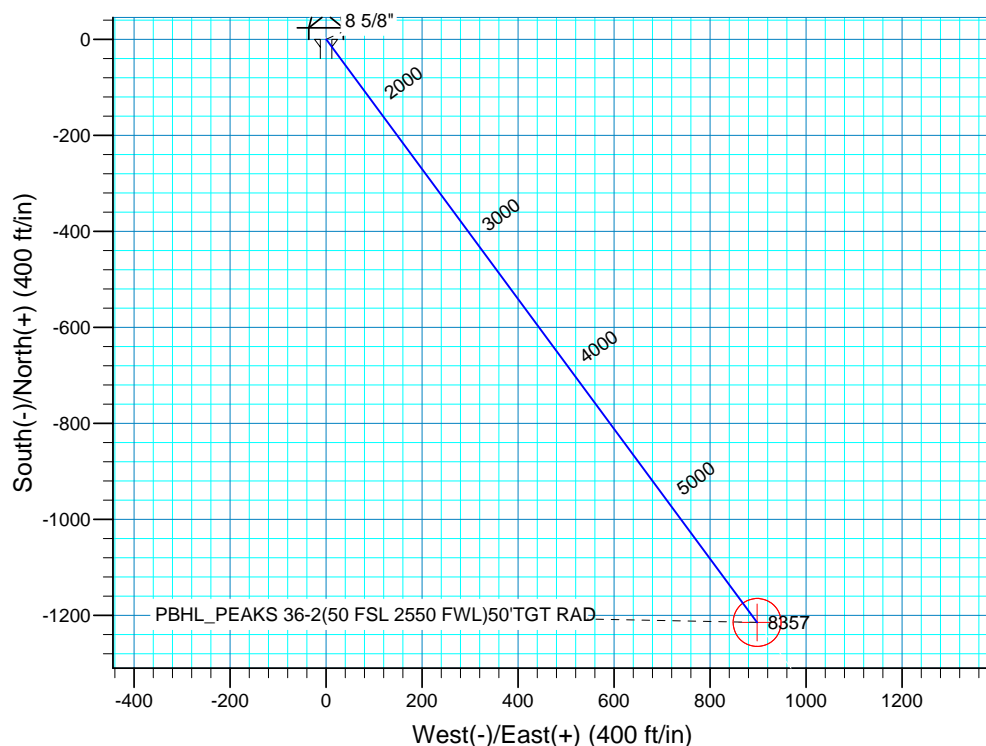
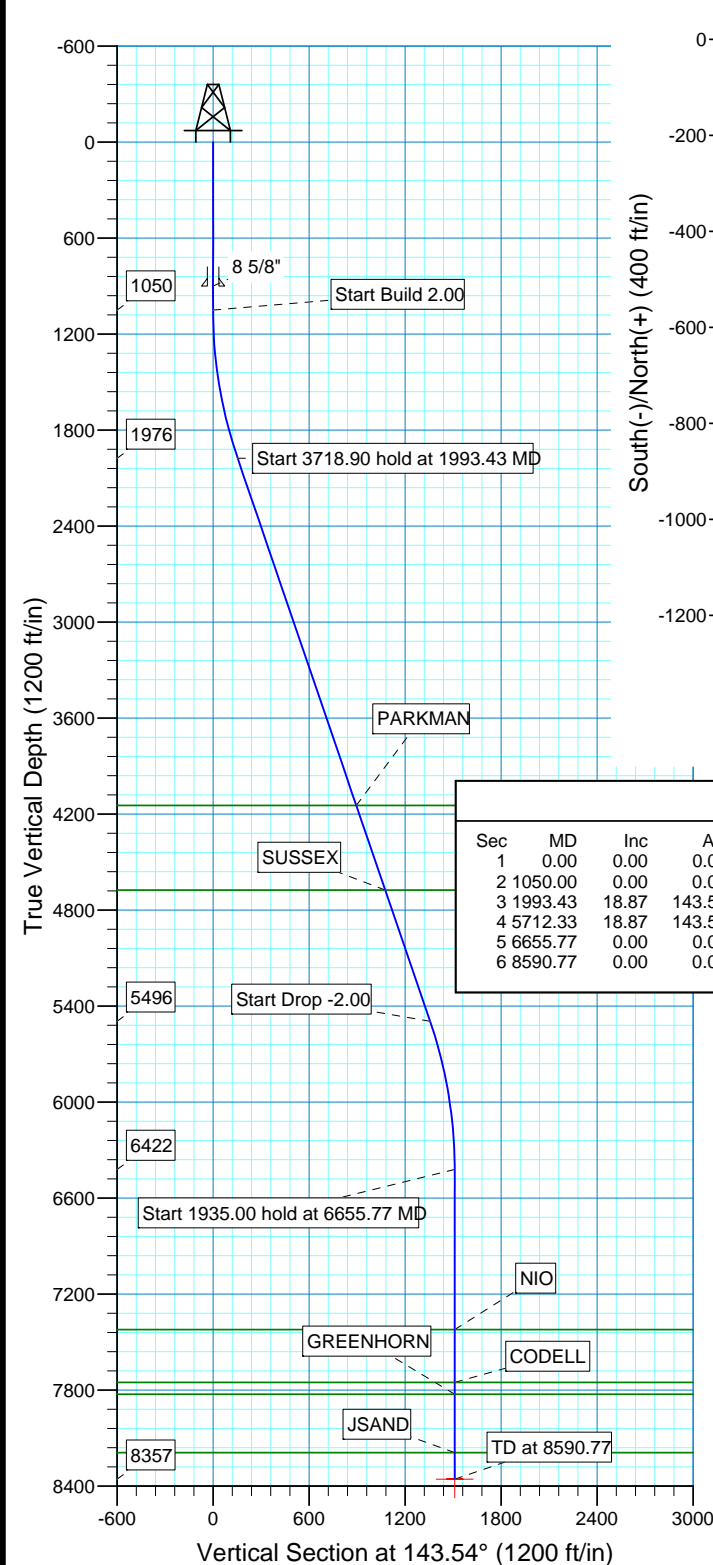
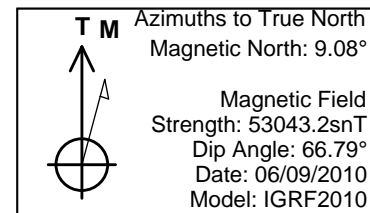


WELL DETAILS: P_PEAKS 36-2								
+N/-S	+E/-W	Northing	Easting	KB @ 5046.00ft	5031.00	Latitude	Longitude	
0.00	0.00	1271172.18	3147172.65			40° 4' 35.616 N	104° 58' 26.681 W	
WELLBORE TARGET DETAILS (MAP CO-ORDINATES AND LAT/LONG)								
Name	TVD	+N/-S	+E/-W	Northing	Easting	Latitude	Longitude	Shape
PBHL	8357.00	-1214.85	897.79	1269962.68	3148077.6240	° 4' 23.610 N	104° 58' 15.132 W	Circle (Radius: 50.00)



SECTION DETAILS										
Sec	MD	Inc	Azi	TVD	+N/-S	+E/-W	DLeg	TFace	VSec	Target
1	0.00	0.00	0.00	0.00	0.00	0.00	0.00	0.00	0.00	
2	1050.00	0.00	0.00	1050.00	0.00	0.00	0.00	0.00	0.00	
3	1993.43	18.87	143.54	1976.47	-123.81	91.50	2.00	143.54	153.95	
4	5712.33	18.87	143.54	5495.53	-1091.04	806.29	0.00	0.00	1356.64	
5	6655.77	0.00	0.00	6422.00	-1214.84	897.79	2.00	180.00	1510.58	
6	8590.77	0.00	0.00	8357.00	-1214.84	897.79	0.00	0.00	1510.58	PBHL_PEAKS 36-2(50 FSL 2550 FWL)50°TGT RAD

FORMATION TOP DETAILS		
TVDPath	MDPath	Formation
4146.00	4286.17	PARKMAN
4676.00	4846.26	SUSSEX
7422.00	7655.77	NIO
7752.00	7985.77	CODELL
7827.00	8060.77	GREENHORN
8192.00	8425.77	JSAND

PROJECT DETAILS: COLORADO NORTHERN ZONE - 83

Geodetic System: US State Plane 1983
Datum: North American Datum 1983
Ellipsoid: GRS 1980
Zone: Colorado Northern Zone
Location: SECTION 2 T1N R68W
System Datum: Mean Sea Level
Local North: True

US ROCKIES REGION PLANNING

COLORADO NORTHERN ZONE - 83

WELD_PEAKS 14-2 PAD

P_PEAKS 36-2

P_PEAKS 36-2

Plan: PLAN #1 7-22-10 RHS

Standard Planning Report

25 July, 2010

Database:	EDM 2003.16 Single User Db	Local Co-ordinate Reference:	Well P_PEAKS 36-2
Company:	US ROCKIES REGION PLANNING	TVD Reference:	KB @ 5046.00ft
Project:	COLORADO NORTHERN ZONE - 83	MD Reference:	KB @ 5046.00ft
Site:	WELD_PEAKS 14-2 PAD	North Reference:	True
Well:	P_PEAKS 36-2	Survey Calculation Method:	Minimum Curvature
Wellbore:	P_PEAKS 36-2		
Design:	PLAN #1 7-22-10 RHS		

Project	COLORADO NORTHERN ZONE - 83, KERR MCGEE OIL & GAS ONSHORE LP		
Map System:	US State Plane 1983	System Datum:	Mean Sea Level
Geo Datum:	North American Datum 1983		
Map Zone:	Colorado Northern Zone		

Site		WELD_PEAKS 14-2 PAD, SECTION 2 T1N R68W			
Site Position:		Northing:	1,271,180.07 ft	Latitude:	40° 4' 35.695 N
From:	Lat/Long	Easting:	3,147,154.18 ft	Longitude:	104° 58' 26.918 W
Position Uncertainty:	0.00 ft	Slot Radius:	in	Grid Convergence:	0.34 °

Well	P_PEAKS 36-2, 1272 FSL 1647 FWL					
Well Position	+N-S	0.00 ft	Northing:	1,271,172.18 ft	Latitude:	40° 4' 35.616 N
	+E-W	0.00 ft	Easting:	3,147,172.65 ft	Longitude:	104° 58' 26.681 W
Position Uncertainty		0.00 ft	Wellhead Elevation:	ft	Ground Level:	5,031.00 ft

Wellbore	P_PEAKS 36-2				
Magnetics	Model Name	Sample Date	Declination (°)	Dip Angle (°)	Field Strength (nT)
	IGRF2010	06/09/2010	9.08	66.79	53,043

Design	PLAN #1 7-22-10 RHS				
Audit Notes:					
Version:	Phase:	PLAN	Tie On Depth:	0.00	
Vertical Section:	Depth From (TVD) (ft)	+N/-S (ft)	+E/-W (ft)	Direction (°)	
	0.00	0.00	0.00	143.54	

Plan Sections										
Measured Depth (ft)	Inclination (°)	Azimuth (°)	Vertical Depth (ft)	+N/-S (ft)	+E/-W (ft)	Dogleg Rate (°/100ft)	Build Rate (°/100ft)	Turn Rate (°/100ft)	TFO (°)	Target
0.00	0.00	0.00	0.00	0.00	0.00	0.00	0.00	0.00	0.00	
1,050.00	0.00	0.00	1,050.00	0.00	0.00	0.00	0.00	0.00	0.00	
1,993.43	18.87	143.54	1,976.47	-123.81	91.50	2.00	2.00	0.00	143.54	
5,712.33	18.87	143.54	5,495.53	-1,091.04	806.29	0.00	0.00	0.00	0.00	
6,655.77	0.00	0.00	6,422.00	-1,214.84	897.79	2.00	-2.00	0.00	180.00	
8,590.77	0.00	0.00	8,357.00	-1,214.84	897.79	0.00	0.00	0.00	0.00	PBHL_PEAKS 36-2

Database:	EDM 2003.16 Single User Db	Local Co-ordinate Reference:	Well P_PEAKS 36-2
Company:	US ROCKIES REGION PLANNING	TVD Reference:	KB @ 5046.00ft
Project:	COLORADO NORTHERN ZONE - 83	MD Reference:	KB @ 5046.00ft
Site:	WELD_PEAKS 14-2 PAD	North Reference:	True
Well:	P_PEAKS 36-2	Survey Calculation Method:	Minimum Curvature
Wellbore:	P_PEAKS 36-2		
Design:	PLAN #1 7-22-10 RHS		

Planned Survey

Measured Depth (ft)	Inclination (°)	Azimuth (°)	Vertical Depth (ft)	+N/-S (ft)	+E/-W (ft)	Vertical Section (ft)	Dogleg Rate (°/100ft)	Build Rate (°/100ft)	Turn Rate (°/100ft)
0.00	0.00	0.00	0.00	0.00	0.00	0.00	0.00	0.00	0.00
100.00	0.00	0.00	100.00	0.00	0.00	0.00	0.00	0.00	0.00
200.00	0.00	0.00	200.00	0.00	0.00	0.00	0.00	0.00	0.00
300.00	0.00	0.00	300.00	0.00	0.00	0.00	0.00	0.00	0.00
400.00	0.00	0.00	400.00	0.00	0.00	0.00	0.00	0.00	0.00
500.00	0.00	0.00	500.00	0.00	0.00	0.00	0.00	0.00	0.00
600.00	0.00	0.00	600.00	0.00	0.00	0.00	0.00	0.00	0.00
700.00	0.00	0.00	700.00	0.00	0.00	0.00	0.00	0.00	0.00
800.00	0.00	0.00	800.00	0.00	0.00	0.00	0.00	0.00	0.00
900.00	0.00	0.00	900.00	0.00	0.00	0.00	0.00	0.00	0.00
8 5/8"									
1,000.00	0.00	0.00	1,000.00	0.00	0.00	0.00	0.00	0.00	0.00
1,050.00	0.00	0.00	1,050.00	0.00	0.00	0.00	0.00	0.00	0.00
Start Build 2.00									
1,100.00	1.00	143.54	1,100.00	-0.35	0.26	0.44	2.00	2.00	0.00
1,200.00	3.00	143.54	1,199.93	-3.16	2.33	3.93	2.00	2.00	0.00
1,300.00	5.00	143.54	1,299.68	-8.77	6.48	10.90	2.00	2.00	0.00
1,400.00	7.00	143.54	1,399.13	-17.17	12.69	21.35	2.00	2.00	0.00
1,500.00	9.00	143.54	1,498.15	-28.37	20.96	35.27	2.00	2.00	0.00
1,600.00	11.00	143.54	1,596.63	-42.33	31.28	52.63	2.00	2.00	0.00
1,700.00	13.00	143.54	1,694.44	-59.05	43.64	73.42	2.00	2.00	0.00
1,800.00	15.00	143.54	1,791.46	-78.50	58.02	97.62	2.00	2.00	0.00
1,900.00	17.00	143.54	1,887.58	-100.67	74.40	125.18	2.00	2.00	0.00
1,993.43	18.87	143.54	1,976.47	-123.81	91.50	153.95	2.00	2.00	0.00
Start 3718.90 hold at 1993.43 MD									
2,000.00	18.87	143.54	1,982.69	-125.52	92.76	156.07	0.00	0.00	0.00
2,100.00	18.87	143.54	2,077.31	-151.52	111.98	188.41	0.00	0.00	0.00
2,200.00	18.87	143.54	2,171.94	-177.53	131.20	220.75	0.00	0.00	0.00
2,300.00	18.87	143.54	2,266.57	-203.54	150.42	253.09	0.00	0.00	0.00
2,400.00	18.87	143.54	2,361.19	-229.55	169.64	285.43	0.00	0.00	0.00
2,500.00	18.87	143.54	2,455.82	-255.56	188.86	317.77	0.00	0.00	0.00
2,600.00	18.87	143.54	2,550.44	-281.57	208.08	350.11	0.00	0.00	0.00
2,700.00	18.87	143.54	2,645.07	-307.57	227.30	382.45	0.00	0.00	0.00
2,800.00	18.87	143.54	2,739.70	-333.58	246.52	414.79	0.00	0.00	0.00
2,900.00	18.87	143.54	2,834.32	-359.59	265.74	447.13	0.00	0.00	0.00
3,000.00	18.87	143.54	2,928.95	-385.60	284.96	479.47	0.00	0.00	0.00
3,100.00	18.87	143.54	3,023.58	-411.61	304.18	511.81	0.00	0.00	0.00
3,200.00	18.87	143.54	3,118.20	-437.62	323.40	544.15	0.00	0.00	0.00
3,300.00	18.87	143.54	3,212.83	-463.63	342.63	576.49	0.00	0.00	0.00
3,400.00	18.87	143.54	3,307.45	-489.63	361.85	608.83	0.00	0.00	0.00
3,500.00	18.87	143.54	3,402.08	-515.64	381.07	641.17	0.00	0.00	0.00
3,600.00	18.87	143.54	3,496.71	-541.65	400.29	673.51	0.00	0.00	0.00
3,700.00	18.87	143.54	3,591.33	-567.66	419.51	705.85	0.00	0.00	0.00
3,800.00	18.87	143.54	3,685.96	-593.67	438.73	738.19	0.00	0.00	0.00
3,900.00	18.87	143.54	3,780.59	-619.68	457.95	770.53	0.00	0.00	0.00
4,000.00	18.87	143.54	3,875.21	-645.69	477.17	802.87	0.00	0.00	0.00
4,100.00	18.87	143.54	3,969.84	-671.69	496.39	835.21	0.00	0.00	0.00
4,200.00	18.87	143.54	4,064.46	-697.70	515.61	867.55	0.00	0.00	0.00
4,286.17	18.87	143.54	4,146.00	-720.11	532.17	895.42	0.00	0.00	0.00
PARKMAN									
4,300.00	18.87	143.54	4,159.09	-723.71	534.83	899.89	0.00	0.00	0.00
4,400.00	18.87	143.54	4,253.72	-749.72	554.05	932.23	0.00	0.00	0.00
4,500.00	18.87	143.54	4,348.34	-775.73	573.27	964.57	0.00	0.00	0.00

Database:	EDM 2003.16 Single User Db	Local Co-ordinate Reference:	Well P_PEAKS 36-2
Company:	US ROCKIES REGION PLANNING	TVD Reference:	KB @ 5046.00ft
Project:	COLORADO NORTHERN ZONE - 83	MD Reference:	KB @ 5046.00ft
Site:	WELD_PEAKS 14-2 PAD	North Reference:	True
Well:	P_PEAKS 36-2	Survey Calculation Method:	Minimum Curvature
Wellbore:	P_PEAKS 36-2		
Design:	PLAN #1 7-22-10 RHS		

Planned Survey

Measured Depth (ft)	Inclination (°)	Azimuth (°)	Vertical Depth (ft)	+N/-S (ft)	+E/-W (ft)	Vertical Section (ft)	Dogleg Rate (°/100ft)	Build Rate (°/100ft)	Turn Rate (°/100ft)
4,600.00	18.87	143.54	4,442.97	-801.74	592.49	996.91	0.00	0.00	0.00
4,700.00	18.87	143.54	4,537.60	-827.74	611.71	1,029.25	0.00	0.00	0.00
4,800.00	18.87	143.54	4,632.22	-853.75	630.93	1,061.59	0.00	0.00	0.00
4,846.26	18.87	143.54	4,676.00	-865.79	639.83	1,076.55	0.00	0.00	0.00
SUSSEX									
4,900.00	18.87	143.54	4,726.85	-879.76	650.16	1,093.93	0.00	0.00	0.00
5,000.00	18.87	143.54	4,821.47	-905.77	669.38	1,126.27	0.00	0.00	0.00
5,100.00	18.87	143.54	4,916.10	-931.78	688.60	1,158.61	0.00	0.00	0.00
5,200.00	18.87	143.54	5,010.73	-957.79	707.82	1,190.95	0.00	0.00	0.00
5,300.00	18.87	143.54	5,105.35	-983.80	727.04	1,223.29	0.00	0.00	0.00
5,400.00	18.87	143.54	5,199.98	-1,009.80	746.26	1,255.63	0.00	0.00	0.00
5,500.00	18.87	143.54	5,294.61	-1,035.81	765.48	1,287.97	0.00	0.00	0.00
5,600.00	18.87	143.54	5,389.23	-1,061.82	784.70	1,320.31	0.00	0.00	0.00
5,700.00	18.87	143.54	5,483.86	-1,087.83	803.92	1,352.65	0.00	0.00	0.00
5,712.33	18.87	143.54	5,495.53	-1,091.04	806.29	1,356.64	0.00	0.00	0.00
Start Drop -2.00									
5,800.00	17.12	143.54	5,578.90	-1,112.81	822.38	1,383.72	2.00	-2.00	0.00
5,900.00	15.12	143.54	5,674.97	-1,135.14	838.88	1,411.47	2.00	-2.00	0.00
6,000.00	13.12	143.54	5,771.95	-1,154.75	853.37	1,435.86	2.00	-2.00	0.00
6,100.00	11.12	143.54	5,869.71	-1,171.63	865.85	1,456.84	2.00	-2.00	0.00
6,200.00	9.12	143.54	5,968.15	-1,185.75	876.28	1,474.41	2.00	-2.00	0.00
6,300.00	7.12	143.54	6,067.15	-1,197.10	884.67	1,488.52	2.00	-2.00	0.00
6,400.00	5.12	143.54	6,166.57	-1,205.67	891.00	1,499.18	2.00	-2.00	0.00
6,500.00	3.12	143.54	6,266.31	-1,211.44	895.27	1,506.35	2.00	-2.00	0.00
6,600.00	1.12	143.54	6,366.24	-1,214.41	897.46	1,510.04	2.00	-2.00	0.00
6,655.77	0.00	0.00	6,422.00	-1,214.84	897.79	1,510.58	2.00	-2.00	-257.39
Start 1935.00 hold at 6655.77 MD									
6,700.00	0.00	0.00	6,466.23	-1,214.84	897.79	1,510.58	0.00	0.00	0.00
6,800.00	0.00	0.00	6,566.23	-1,214.84	897.79	1,510.58	0.00	0.00	0.00
6,900.00	0.00	0.00	6,666.23	-1,214.84	897.79	1,510.58	0.00	0.00	0.00
7,000.00	0.00	0.00	6,766.23	-1,214.84	897.79	1,510.58	0.00	0.00	0.00
7,100.00	0.00	0.00	6,866.23	-1,214.84	897.79	1,510.58	0.00	0.00	0.00
7,200.00	0.00	0.00	6,966.23	-1,214.84	897.79	1,510.58	0.00	0.00	0.00
7,300.00	0.00	0.00	7,066.23	-1,214.84	897.79	1,510.58	0.00	0.00	0.00
7,400.00	0.00	0.00	7,166.23	-1,214.84	897.79	1,510.58	0.00	0.00	0.00
7,500.00	0.00	0.00	7,266.23	-1,214.84	897.79	1,510.58	0.00	0.00	0.00
7,600.00	0.00	0.00	7,366.23	-1,214.84	897.79	1,510.58	0.00	0.00	0.00
7,655.77	0.00	0.00	7,422.00	-1,214.84	897.79	1,510.58	0.00	0.00	0.00
NIO									
7,700.00	0.00	0.00	7,466.23	-1,214.84	897.79	1,510.58	0.00	0.00	0.00
7,800.00	0.00	0.00	7,566.23	-1,214.84	897.79	1,510.58	0.00	0.00	0.00
7,900.00	0.00	0.00	7,666.23	-1,214.84	897.79	1,510.58	0.00	0.00	0.00
7,985.77	0.00	0.00	7,752.00	-1,214.84	897.79	1,510.58	0.00	0.00	0.00
CODELL									
8,000.00	0.00	0.00	7,766.23	-1,214.84	897.79	1,510.58	0.00	0.00	0.00
8,060.77	0.00	0.00	7,827.00	-1,214.84	897.79	1,510.58	0.00	0.00	0.00
GREENHORN									
8,100.00	0.00	0.00	7,866.23	-1,214.84	897.79	1,510.58	0.00	0.00	0.00
8,200.00	0.00	0.00	7,966.23	-1,214.84	897.79	1,510.58	0.00	0.00	0.00
8,300.00	0.00	0.00	8,066.23	-1,214.84	897.79	1,510.58	0.00	0.00	0.00
8,400.00	0.00	0.00	8,166.23	-1,214.84	897.79	1,510.58	0.00	0.00	0.00
8,425.77	0.00	0.00	8,192.00	-1,214.84	897.79	1,510.58	0.00	0.00	0.00
JSAND									

Database:	EDM 2003.16 Single User Db	Local Co-ordinate Reference:	Well P_PEAKS 36-2
Company:	US ROCKIES REGION PLANNING	TVD Reference:	KB @ 5046.00ft
Project:	COLORADO NORTHERN ZONE - 83	MD Reference:	KB @ 5046.00ft
Site:	WELD_PEAKS 14-2 PAD	North Reference:	True
Well:	P_PEAKS 36-2	Survey Calculation Method:	Minimum Curvature
Wellbore:	P_PEAKS 36-2		
Design:	PLAN #1 7-22-10 RHS		

Planned Survey									
Measured Depth (ft)	Inclination (°)	Azimuth (°)	Vertical Depth (ft)	+N/-S (ft)	+E/-W (ft)	Vertical Section (ft)	Dogleg Rate (°/100ft)	Build Rate (°/100ft)	Turn Rate (°/100ft)
8,500.00	0.00	0.00	8,266.23	-1,214.84	897.79	1,510.58	0.00	0.00	0.00
8,590.77	0.00	0.00	8,357.00	-1,214.84	897.79	1,510.58	0.00	0.00	0.00
PBHL_PEAKS 36-2(50 FSL 2550 FWL)50'TGT RAD									

Targets									
Target Name	Dip Angle (°)	Dip Dir. (°)	TVD (ft)	+N/-S (ft)	+E/-W (ft)	Northing (ft)	Easting (ft)	Latitude	Longitude
- hit/miss target									
- Shape									
PBHL_PEAKS 36-2(5	0.00	0.00	8,357.00	-1,214.85	897.79	1,269,962.68	3,148,077.62	40° 4' 23.610 N	104° 58' 15.132 W
- plan hits target center									
- Circle (radius 50.00)									

Casing Points					
Measured Depth (ft)	Vertical Depth (ft)	Name	Casing Diameter (in)	Hole Diameter (in)	
900.00	900.00	8 5/8"	8.620	11.000	

Formations					
Measured Depth (ft)	Vertical Depth (ft)	Name	Lithology	Dip (°)	Dip Direction (°)
4,286.17	4,146.00	PARKMAN		0.00	
4,846.26	4,676.00	SUSSEX			
8,060.77	7,827.00	GREENHORN		0.00	
8,425.77	8,192.00	JSAND		0.00	
7,985.77	7,752.00	CODELL		0.00	
7,655.77	7,422.00	NIO		0.00	

Plan Annotations					
Measured Depth (ft)	Vertical Depth (ft)	Local Coordinates			
		+N/-S (ft)	+E/-W (ft)	Comment	
1,050.00	1,050.00	0.00	0.00	Start Build 2.00	
1,993.43	1,976.47	-123.81	91.50	Start 3718.90 hold at 1993.43 MD	
5,712.33	5,495.53	-1,091.04	806.29	Start Drop -2.00	
6,655.77	6,422.00	-1,214.84	897.79	Start 1935.00 hold at 6655.77 MD	
8,590.77	8,357.00	-1,214.84	897.79	TD at 8590.77	