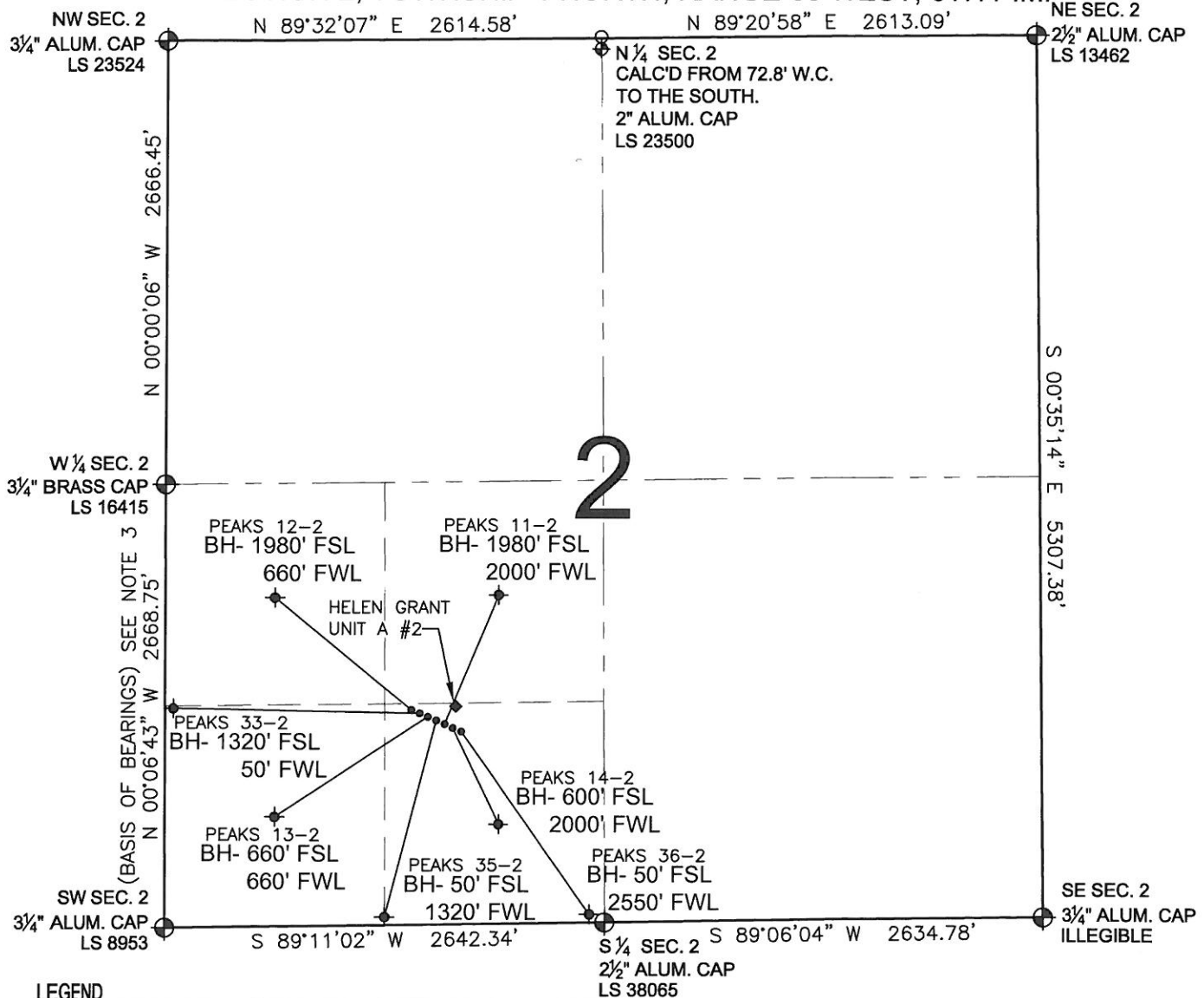


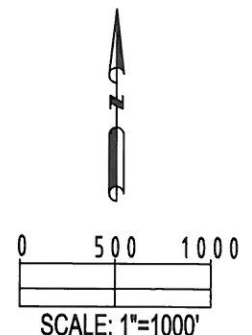
PAD DRAWING - PEAKS 7 PAD


SECTION 2, TOWNSHIP 1 NORTH, RANGE 68 WEST, 6TH P.M.



- NOTES:
- THIS SURVEY WAS DONE BY GPS METHODS AND CONFORMS TO THE MINIMUM STANDARDS SET BY THE C.O.G.C.C., RULE NO. 215
 - ELEVATIONS SHOWN AT THE WELL HEAD, AS WELL AS HORIZONTAL CONTROL, ARE BASED ON GPS-RTK VALUES DERIVED FROM DOING 2-HOUR STATIC GPS SESSIONS AND REDUCTIONS USING O.P.U.S. SOLUTIONS. VERTICAL = NAVD88; HORIZONTAL = NAD83/92
 - THE BEARINGS SHOWN HEREON ARE BASED ON GPS OBSERVATIONS BETWEEN THE MONUMENTS SHOWN HEREON AS FOUND ON THE FIELD DATE BELOW.
 - DISTANCES SHOWN ARE AT GROUND LEVEL, AS MEASURED IN THE FIELD, WITH TIES TO WELLS MEASURED AT A PERPENDICULAR TO SECTION LINES.

- NOTES:
- PEAKS 36-2 TO BE AT 1272' FSL, 1647' FWL. BOTTOM HOLE AT 50' FSL & 2550' FWL.
 - PEAKS 14-2 TO BE AT 1276' FSL, 1638' FWL. BOTTOM HOLE AT 600' FSL & 2000' FWL.
 - PEAKS 11-2 TO BE AT 1280' FSL, 1629' FWL. BOTTOM HOLE AT 1980' FSL & 2000' FWL.
 - PEAKS 35-2 TO BE AT 1284' FSL, 1620' FWL. BOTTOM HOLE AT 50' FSL & 1320' FWL.
 - PEAKS 13-2 TO BE AT 1289' FSL, 1611' FWL. BOTTOM HOLE AT 660' FSL & 660' FWL.
 - PEAKS 33-2 TO BE AT 1293' FSL, 1601' FWL. BOTTOM HOLE AT 1320' FSL & 50' FWL.
 - PEAKS 12-2 TO BE AT 1297' FSL, 1592' FWL. BOTTOM HOLE AT 1980' FSL & 660' FWL.
 - HELEN GRANT UNIT A #2 IS 1327' FSL, 1643' FWL.



REVISIONS		PREPARED BY:	 Petroleum Field Services, LLC 1801 W. 13th Ave. Denver, CO 80204
INITIAL	DATE		
SMF	06-23-10		

KERR-MCGEE OIL & GAS ONSHORE LP

FIELD DATE: 04-12-10	PAD NAME: PEAKS 7 PAD
DRAWING DATE: 04-16-10	SURFACE LOCATION:
BY: SMF	WELD COUNTY, COLORADO SE 1/4 SW 1/4, SEC. 2, T1N, R68W