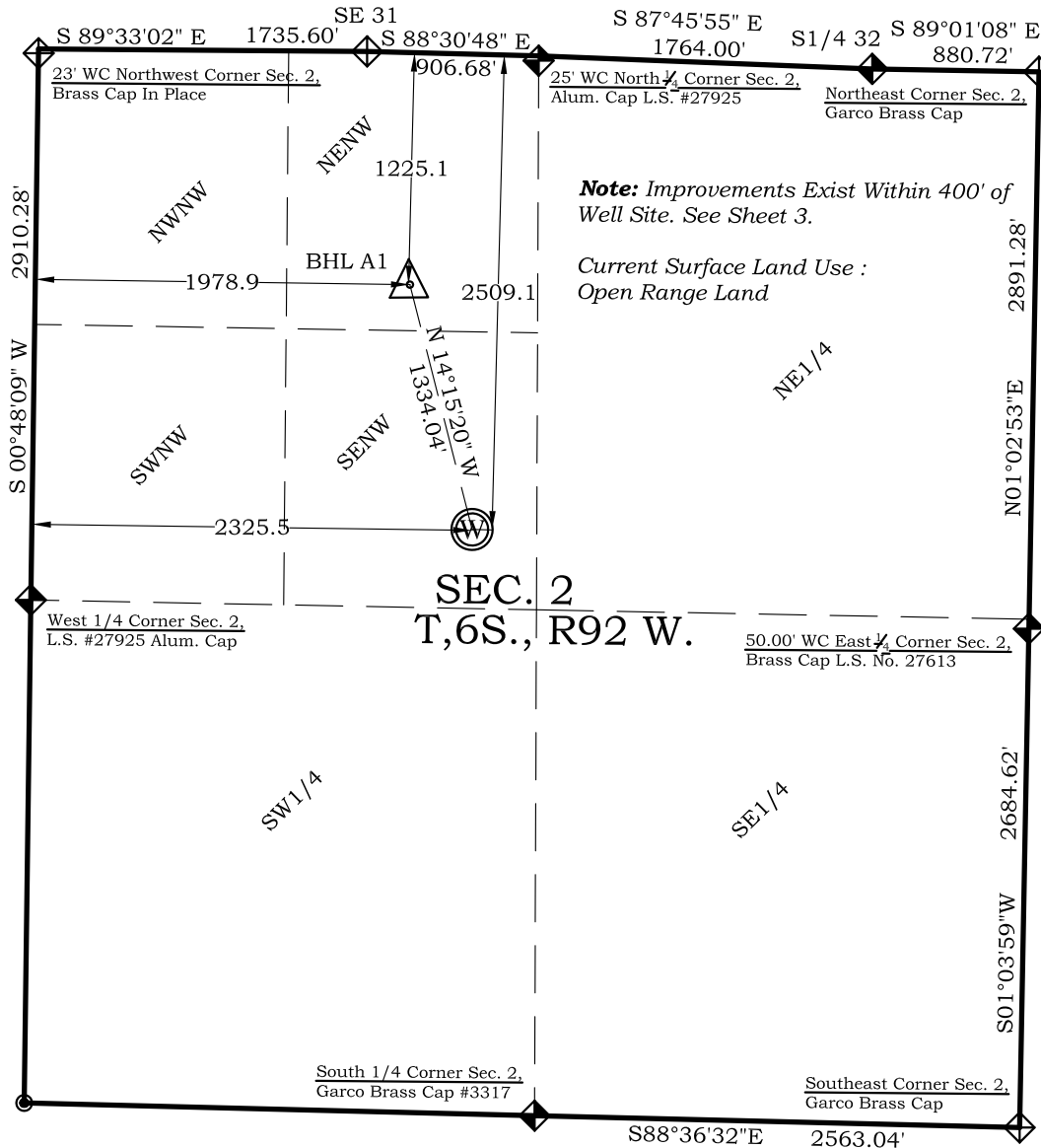


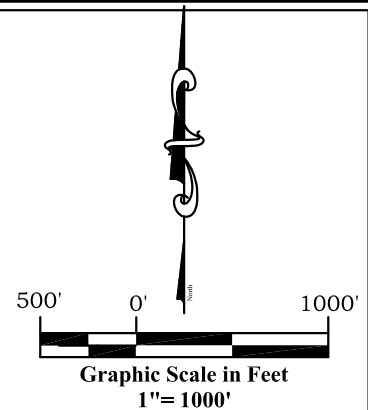
# Well Location Plat Three Siblings A1

Section 2, Township 6 South, Range 92 West



**Note:** Improvements Exist Within 400' of Well Site. See Sheet 3.

Current Surface Land Use :  
Open Range Land



## Legend

- ◆ - Field Surveyed Section Corner
- ◆ - Field Surveyed Quarter Corner
- - Calculated Section Corner Location
- ◆ - Field Surveyed 1/6 Corner

## Bottom Hole: Three Siblings A1

1225' FNL  
1979' FWL  
**NAD83**  
Lat: 39.560735478°N  
Long: 107.637264985°W  
**NAD27**  
Lat: 39.560754901°N  
Long: 107.636650400°W

## Surface: Three Siblings A1

2509' FNL  
2325' FWL  
Gnd El= 5757.6  
Pad El= 5753.3  
**NAD83**  
Lat: 39.557214677°N  
Long: 107.635966268°W  
**NAD27**  
Lat: 39.557234097°N  
Long: 107.635351777°W  
UTM 13 NORTH  
**NAD 1983**  
NORTHING  
14376392.457  
EASTING  
897415.836

**Prepared For Antero Resources**  
**Proposed Three Siblings A1 Well Situate in The SE 1/4 NW 1/4**  
**Section 2, Township 6 South, Range 92 West of the 6 th.**  
**Principal Meridian, County of Garfield, State of Colorado**

## SURVEYOR'S CERTIFICATE

I, SCOTT E. AIBNER, A REGISTERED LAND SURVEYOR, LICENSED UNDER THE LAWS OF THE STATE OF COLORADO DO HEREBY CERTIFY THAT THE SURVEY SHOWN HEREON WAS PREPARED BY RIVER VALLEY SURVEY, INC., FOR ANTERO RESOURCES, BY ME OR UNDER MY DIRECT SUPERVISION AND THAT THIS PLAT IS A TRUE REPRESENTATION THEREOF.

BY:   
SCOTT E. AIBNER, COLORADO REG. NO. 31143

## Notes:

1. LATITUDE AND LONGITUDE COORDINATES ARE DIFFERENTIALLY CORRECTED AND BASED ON PUBLISHED NGS CONTROL STATION "WDP-5". SYSTEM: UTM ZONE: 13 NORTH DATUM: NAD 1983 (CONUS)
2. ELEVATIONS ARE BASED ON NAVD OF 1983.
3. ALL BOTTOM AND TOP HOLE LOCATIONS ARE MEASURED 90 DEGREES FROM SECTION LINE.
4. USGS QUADRANGLE MAP "SILT".
5. CURRENT SURFACE LAND USE: HAY FIELD.
6. PDOP AT THE TIME OF LOCATION OF SURFACE WELL = 2.4



**River Valley Survey, Inc.**  
110 East 3rd. Street, Suite 213  
Rifle, Colorado 81650  
Ph: 970-379-7846

**Project:** Three Siblings A Pad

**Field Date:** 07-22-10

**Date:** 07-28-10

**Scale:** 1"= 1500'

**Sheet:** 1 of 12

**Well Location Plat**  
**Prepared For Antero Resources**

**Situate In:**  
SW 1/4 Section 2, T6S., R. 92 W. of the  
6th P.M., Garfield County, Colorado

