

DALEY LAND SURVEYING, INC.

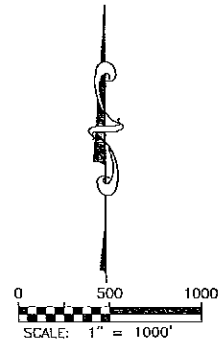
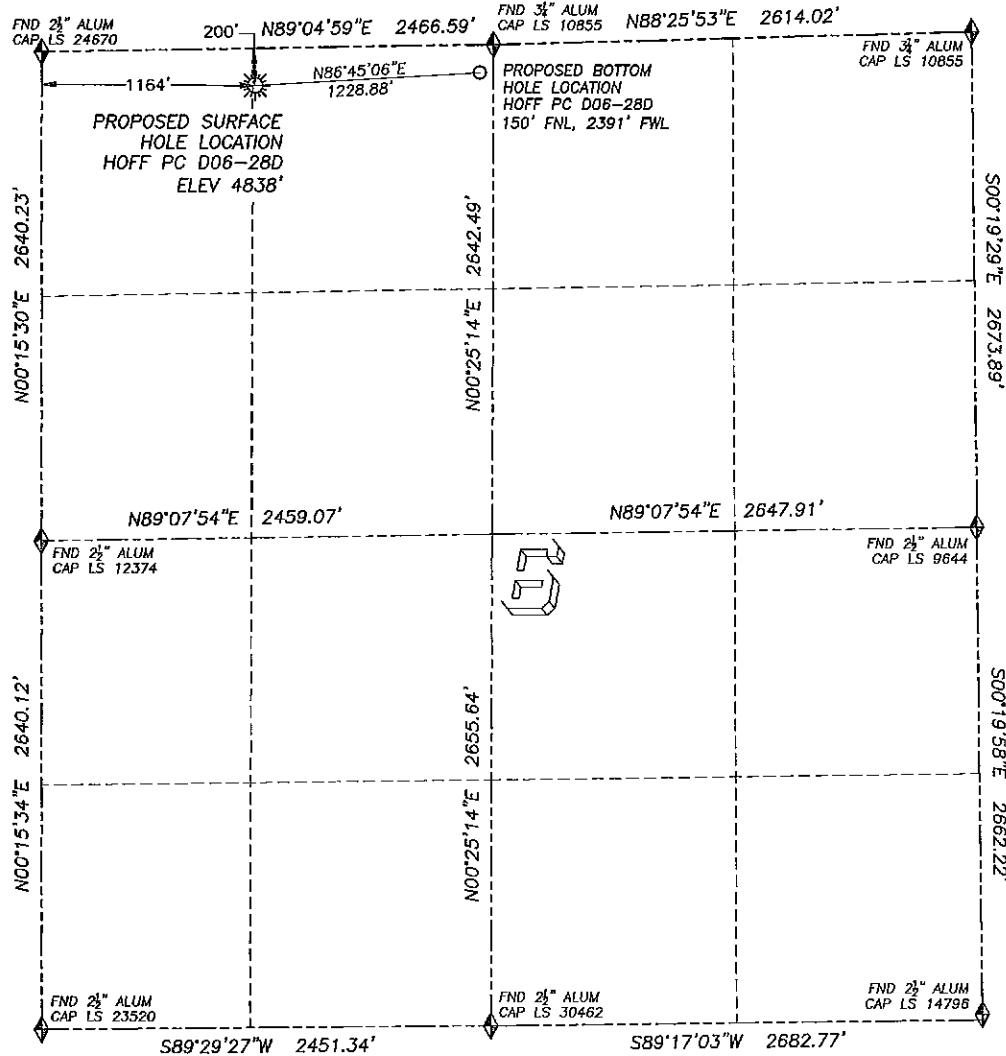
PARKER, CO. 80134

303 953 9841

WELL LOCATION CERTIFICATE

HOFF PC D06-28D

SECTION 6, TOWNSHIP 3 NORTH, RANGE 64 WEST OF THE 6TH PRINCIPAL MERIDIAN

**LEGEND**

- ◆ FOUND MONUMENT AS DESCRIBED
- ☀ PROPOSED WELL
- EXISTING WELL
- BOTTOM HOLE
- ⊗ ABANDONED WELL

NAD 83 LATITUDE AND LONGITUDE**HOFF PC D06-28D SURFACE HOLE:**

LATITUDE: N40.26099°
 LONGITUDE: W104.59827°
 ELEVATION: 4838'
 PDOP 1.3

200' FNL, 1164' FWL

BOTTOM HOLE:

LATITUDE: N40.26118°
 LONGITUDE: W104.59388°
 150' FNL, 2391' FWL

NEAREST EXISTING WELL:

OCOMA II C31-13 SURFACE HOLE
 LATITUDE: N40.26282°
 LONGITUDE: W104.60013°
 ELEVATION: 4857'
 843' NORTHWEST (SEC 31, 4N-64W)

QUARTER/QUARTER: NE4/NW4

NEAREST APPARENT PROPERTY LINE:
 200'± NORTH

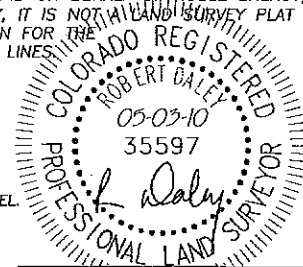
IN ACCORDANCE WITH A REQUEST FROM MATT CAMPBELL OF NOBLE ENERGY INC., DALEY LAND SURVEYING, INC. HAS DETERMINED THE SURFACE LOCATION OF THE HOFF PC D06-28D WELL TO BE 200' FNL, 1164' FWL, AS MEASURED AT NINETY (90) DEGREES FROM THE SECTION LINES OF SECTION 6, TOWNSHIP 3 NORTH, RANGE 64 WEST OF THE 6TH PRINCIPAL MERIDIAN, WELD COUNTY, COLORADO. THE BOTTOM HOLE LOCATION, PROVIDED BY THE CLIENT, IS TO BE 150' FNL, 2391' FWL.

I HEREBY CERTIFY THAT THIS WELL LOCATION CERTIFICATE WAS PREPARED BY ME OR UNDER MY DIRECT SUPERVISION, THAT THE WORK WAS COMPLETED ON 4/29/2010 FOR AND ON BEHALF OF NOBLE ENERGY, INC., AND THAT THIS MAP DOES NOT REPRESENT A BOUNDARY SURVEY, IT IS NOT TO BE RELIED UPON FOR THE ESTABLISHMENT OF FENCE, BUILDING OR OTHER FUTURE IMPROVEMENT LINES.

NOTES:

- 1) BEARINGS FOR THIS MAP ARE ASSUMED AND BASED UPON GPS OBSERVATIONS MADE BETWEEN MONUMENTS LOCATED AT THE NORTHWEST CORNER AND WEST QUARTER CORNER OF SECTION 6, T.3N., R.64W.
- 2) HORIZONTAL DATUM IS NAD83.
- 3) VERTICAL DATUM IS NAVD88. ELEVATIONS ARE DERIVED FROM GPS OBSERVATIONS PROCESSED THROUGH OPUS, UTILIZING THE GEOID03 MODEL.
- 4) SEE VISIBLE IMPROVEMENTS EXHIBIT FOR VISIBLE IMPROVEMENTS WITHIN 600' OF PROPOSED SURFACE HOLE LOCATION.
- 5) SURFACE USE: PASTURE.

NOTICE: According to Colorado law you MUST commence any legal action based upon any defect in this W.L.C. within three years after you first discover such defect. In no event may any action based upon any such defect in this W.L.C. be commenced more than ten years from the date of the certification shown herein.



FOR AND ON BEHALF OF
 DALEY LAND SURVEYING INC.,
 Robert Daley, PLS 35597

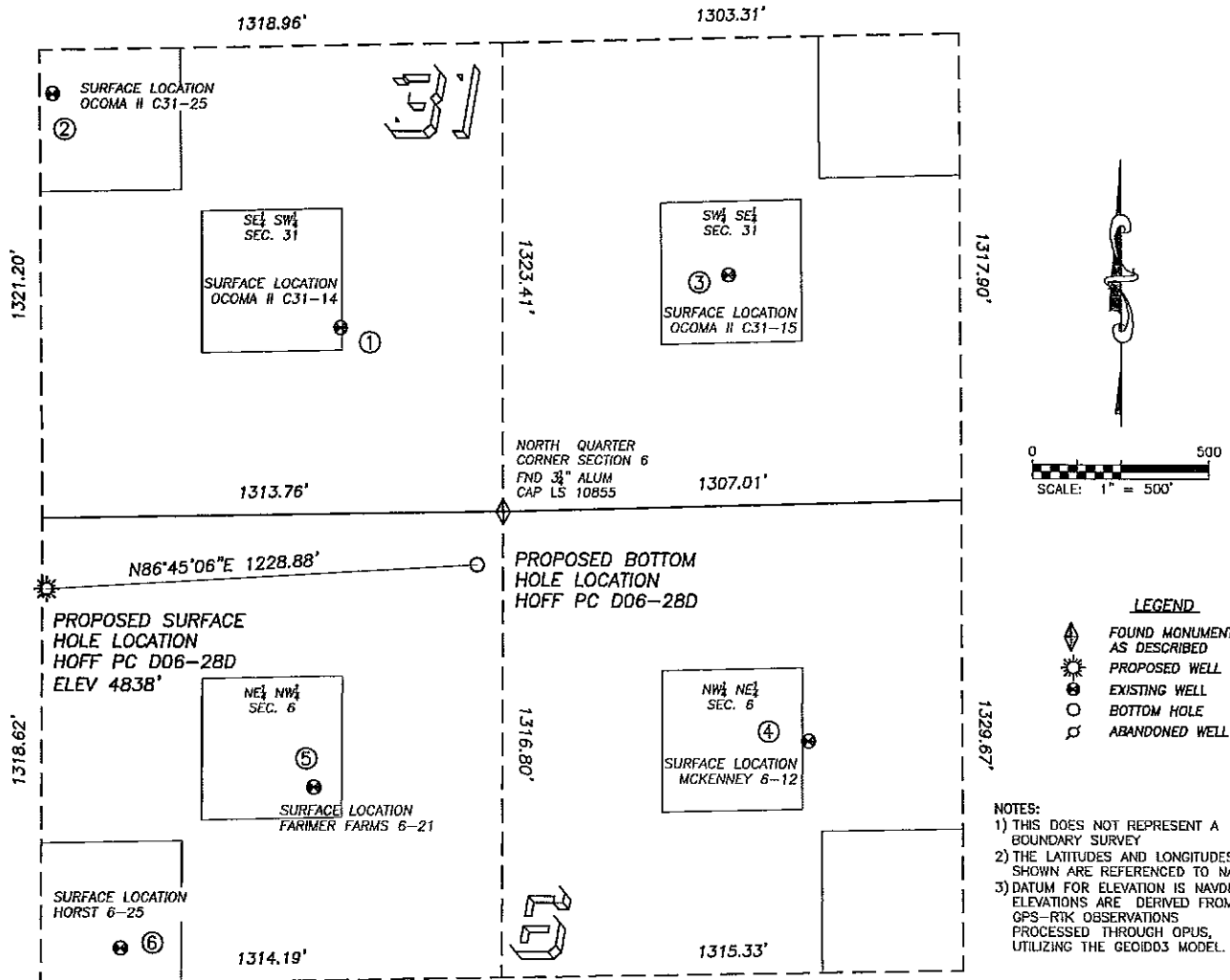
DALEY LAND SURVEYING, INC.

PARKER, CO. 80134

303 953 9841

SITE SKETCH HOFF PC D06-28D

SECTION 6, TOWNSHIP 3 NORTH, RANGE 64 WEST OF THE 6TH PRINCIPAL MERIDIAN



NOTES:

- 1) THIS DOES NOT REPRESENT A BOUNDARY SURVEY
- 2) THE LATITUDES AND LONGITUDES SHOWN ARE REFERENCED TO NAD83
- 3) DATUM FOR ELEVATION IS NAVD88. ELEVATIONS ARE DERIVED FROM GPS-RTK OBSERVATIONS PROCESSED THROUGH OPUS, UTILIZING THE GEOID03 MODEL.

①

OCOMA II C31-14

SW/SW SEC. 31
526' FSL, 2000' FWL
774' NW OF PROPOSED
BOTTOM HOLE LOCATION
LAT. N40.26302°
LONG. W104.59527°
EL: 4852'
PDOP 2.1

②

OCOMA II C31-25

SE/SW SEC. 31
1197' FSL, 1177' FWL
1793' NW OF PROPOSED
BOTTOM HOLE LOCATION
LAT. N40.26482°
LONG. W104.59820°
EL: 4864'
PDOP 2.1

③

OCOMA II C31-15

SW/SE SEC. 31
651' FSL, 1967' FEL
1091' NE OF PROPOSED
BOTTOM HOLE LOCATION
LAT. N40.26343°
LONG. W104.59130°
EL: 4841'
PDOP 2.1

④

MCKENNEY 6-12

NW/NE SEC. 6
671' FNL, 1750' FEL
1066' SE OF PROPOSED
BOTTOM HOLE LOCATION
LAT. N40.25982°
LONG. W104.59050°
EL: 4815'
PDOP 2.4

⑤

FARMER FARMS 6-21

NE/NW SEC. 6
771' FNL, 1926' FWL
784' SW OF PROPOSED
BOTTOM HOLE LOCATION
LAT. N40.25945°
LONG. W104.59555°
EL: 4833'
PDOP 1.5

⑥

HORST 6-25

NE/NW SEC. 6
1218' FNL, 1375' FWL
1489' SW OF PROPOSED
BOTTOM HOLE LOCATION
LAT. N40.25820°
LONG. W104.59753°
EL: 4834'
PDOP 2.0

PAD DETAIL

