

DALEY LAND SURVEYING, INC.

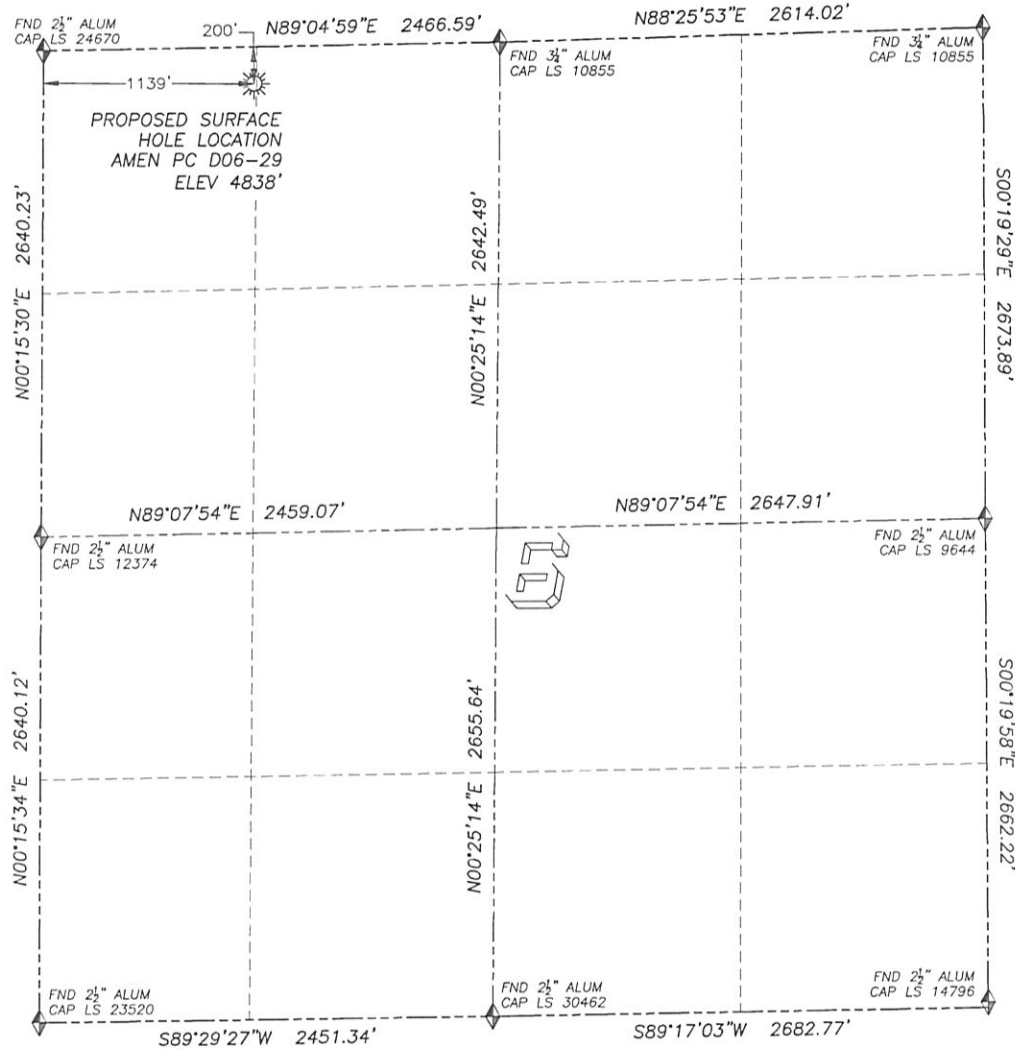
PARKER, CO. 80134

303 953 9841

# WELL LOCATION CERTIFICATE

## AMEN PC D06-29

SECTION 6, TOWNSHIP 3 NORTH, RANGE 64 WEST OF THE 6TH PRINCIPAL MERIDIAN



0 500 1000  
SCALE: 1" = 1000'

**LEGEND**

- ◆ FOUND MONUMENT AS DESCRIBED
- ☀ PROPOSED WELL
- ⊙ EXISTING WELL
- BOTTOM HOLE
- ⊗ ABANDONED WELL

**NAD 83 LATITUDE AND LONGITUDE****AMEN PC D06-29 SURFACE HOLE:**

LATITUDE: N40.26099°  
 LONGITUDE: W104.59836°  
 ELEVATION: 4838'  
 PDOP 1.8  
 200' FNL, 1139' FWL

**NEAREST EXISTING WELL:**

OCOMA II C31-13 SURFACE HOLE  
 LATITUDE: N40.26282°  
 LONGITUDE: W104.60013°  
 ELEVATION: 4857'  
 829' NORTHWEST (SEC 31,4N-64W)

QUARTER/QUARTER: NW4/NW4

NEAREST APPARENT PROPERTY LINE:  
 200'± NORTH

IN ACCORDANCE WITH A REQUEST FROM MATT CAMPBELL OF NOBLE ENERGY INC., DALEY LAND SURVEYING, INC. HAS DETERMINED THE SURFACE LOCATION OF THE AMEN PC D06-29 WELL TO BE 200' FNL, 1139' FWL, AS MEASURED AT NINETY (90) DEGREES FROM THE SECTION LINES OF SECTION 6, TOWNSHIP 3 NORTH, RANGE 64 WEST OF THE 6TH PRINCIPAL MERIDIAN, WELD COUNTY, COLORADO.

I HEREBY CERTIFY THAT THIS WELL LOCATION CERTIFICATE WAS PREPARED BY ME OR UNDER MY DIRECT SUPERVISION, THAT THE WORK WAS COMPLETED ON 4/29/2010 FOR AND ON BEHALF OF NOBLE ENERGY, INC., AND THAT THIS MAP DOES NOT REPRESENT A BOUNDARY SURVEY, IT IS NOT A LAND SURVEY PLAT OR AN IMPROVEMENT SURVEY PLAT AND IT IS NOT TO BE RELIED UPON FOR THE ESTABLISHMENT OF FENCE, BUILDING OR OTHER FUTURE IMPROVEMENT LINES.

**NOTES:**

- 1) BEARINGS FOR THIS MAP ARE ASSUMED AND BASED UPON GPS OBSERVATIONS MADE BETWEEN MONUMENTS LOCATED AT THE NORTHWEST CORNER AND WEST QUARTER CORNER OF SECTION 6, T.3N., R.64W.
- 2) HORIZONTAL DATUM IS NAD83.
- 3) VERTICAL DATUM IS NAVD88. ELEVATIONS ARE DERIVED FROM GPS OBSERVATIONS PROCESSED THROUGH OPUS, UTILIZING THE GEOID03 MODEL.
- 4) SEE VISIBLE IMPROVEMENTS EXHIBIT FOR VISIBLE IMPROVEMENTS WITHIN 600' OF PROPOSED SURFACE HOLE LOCATION.
- 5) SURFACE USE: PASTURE.

NOTICE: According to Colorado law you MUST commence any legal action based upon any defect in this W.L.C. within three years after you first discover such defect. In no event may any action based upon any such defect in this W.L.C. be commenced more than ten years from the date of the certification shown herein.



FOR AND ON BEHALF OF  
 DALEY LAND SURVEYING INC.,  
 Robert Daley, PLS 35597

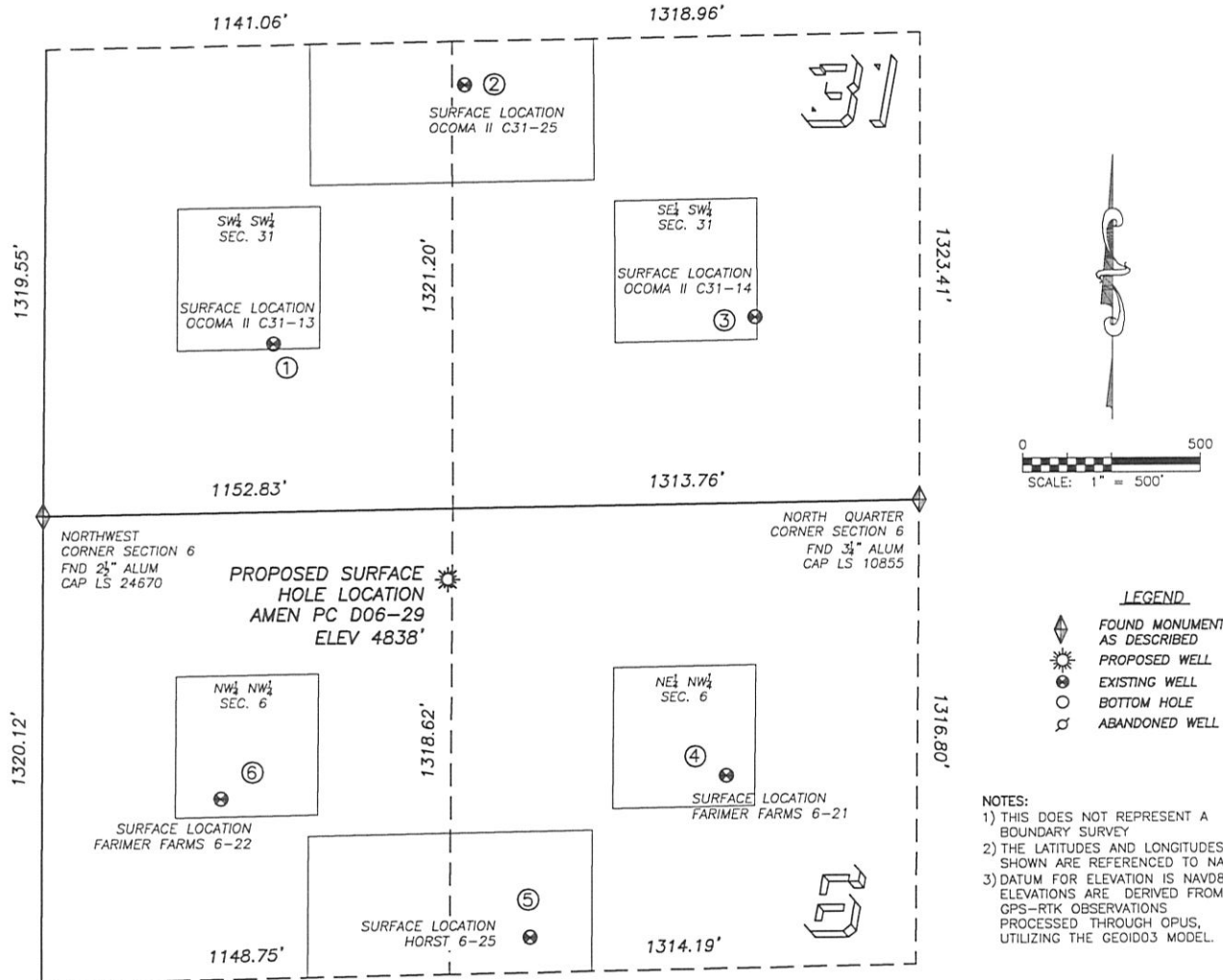
DALEY LAND SURVEYING, INC.

PARKER, CO. 80134

303 953 9841

# SITE SKETCH AMEN PC D06-29

SECTION 6, TOWNSHIP 3 NORTH, RANGE 64 WEST OF THE 6TH PRINCIPAL MERIDIAN



①  
**OCOMA II C31-13**  
SW/SW SEC. 31  
475' FSL, 644' FWL  
829' NW OF PROPOSED  
SURFACE HOLE LOCATION  
LAT. N40.26282°  
LONG. W104.60013°  
EL: 4857'  
PDOP 1.4

②  
**OCOMA II C31-25**  
SE/SW SEC. 31  
1197' FSL, 1177' FWL  
1398' N OF PROPOSED  
SURFACE HOLE LOCATION  
LAT. N40.26482°  
LONG. W104.59820°  
EL: 4864'  
PDOP 2.1

③  
**OCOMA II C31-14**  
SW/SW SEC. 31  
526' FSL, 2000' FWL  
1138' NE OF PROPOSED  
SURFACE HOLE LOCATION  
LAT. N40.26302°  
LONG. W104.59527°  
EL: 4852'  
PDOP 2.1

④  
**FARAMIR FARMS 6-21**  
NE/NW SEC. 6  
771' FNL, 1926' FWL  
963' SE OF PROPOSED  
SURFACE HOLE LOCATION  
LAT. N40.25945°  
LONG. W104.59555°  
EL: 4833'  
PDOP 1.5

⑤  
**HORST 6-25**  
NE/NW SEC. 6  
1218' FNL, 1375' FWL  
1041' S OF PROPOSED  
SURFACE HOLE LOCATION  
LAT. N40.25820°  
LONG. W104.59753°  
EL: 4834'  
PDOP 2.0

⑥  
**FARAMIR FARMS 6-22**  
NW/NW SEC. 6  
809' FNL, 502' FWL  
890' SW OF PROPOSED  
SURFACE HOLE LOCATION  
LAT. N40.25928°  
LONG. W104.60065°  
EL: 4861'  
PDOP 1.6

## PAD DETAIL

