



# ACCESS ROAD MAP

Map to Accompany  
OIL AND GAS LOCATION ASSESSMENT  
Access Road Map

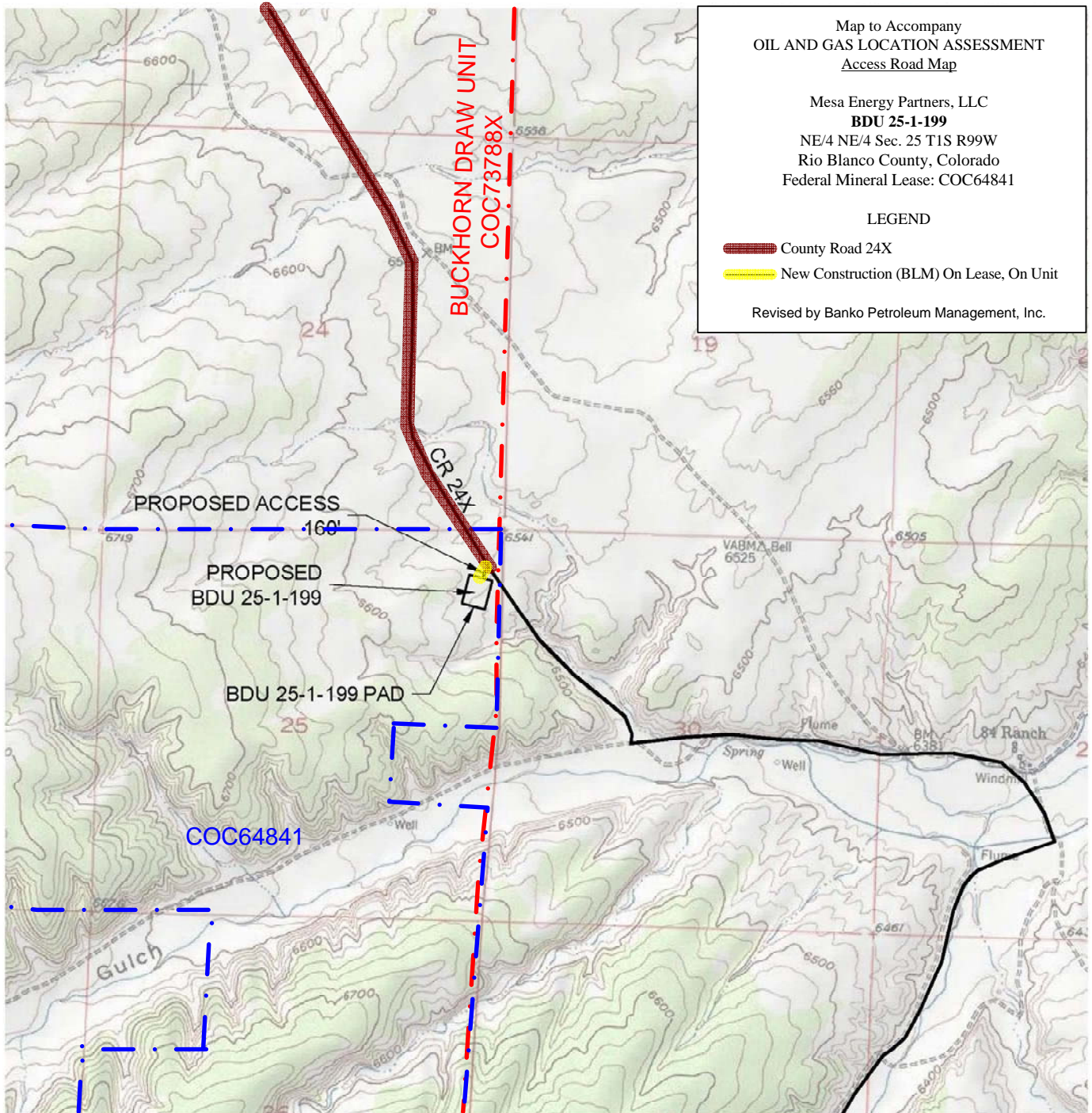
Mesa Energy Partners, LLC  
**BDU 25-1-199**  
NE/4 NE/4 Sec. 25 T1S R99W  
Rio Blanco County, Colorado  
Federal Mineral Lease: COC64841

## LEGEND

 County Road 24X

 New Construction (BLM) On Lease, On Unit

Revised by Banko Petroleum Management, Inc.



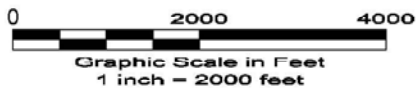
## DRIVING DIRECTIONS:

MP 0.0 - Intersection of Highway 64 & Highway 139; East on Highway 64  
MP 9.1 - Right on CR 122, South along CR 122  
MP 25.5 - Intersection CR 122 & CR 24X; Continue straight on CR 24X  
MP 33.3 - Right on access onto BDU 25-1-199 Pad

3 OF 7 6/16/10



North



LAND SURVEYING AND MAPPING  
LAFAYETTE - WINTER PARK  
Ph 303 666 0379 Fx 303 665 6320

**MESA ENERGY PARTNERS, LLC**  
**BDU 25-1-199**

**NE1/4 NE1/4 SEC. 25 T1S R99W**  
**6th PM RIO BLANCO COUNTY COLORADO**