

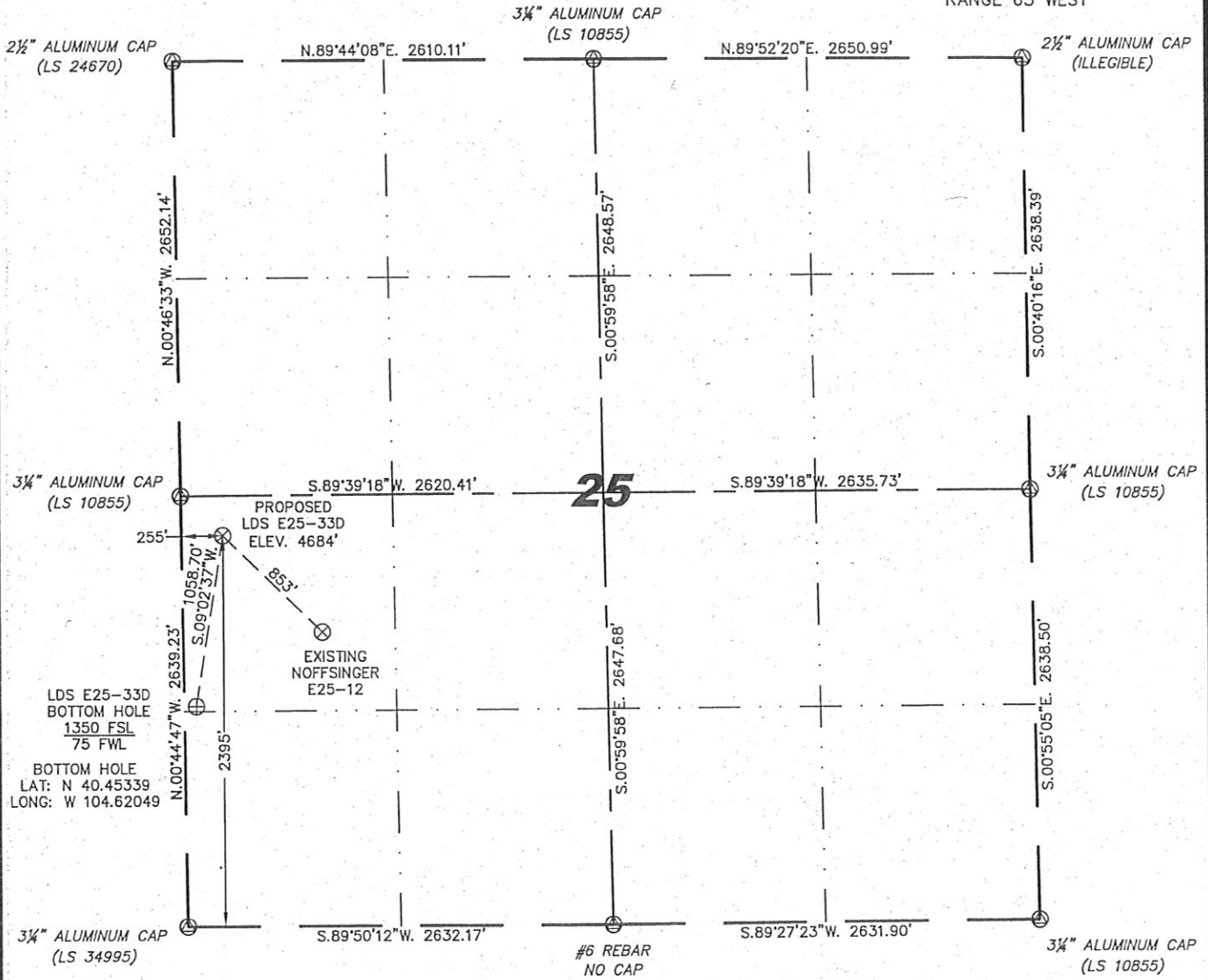
Steil Surveying Services, LLC

1102 West 19th Street P.O. BOX 2073

Cheyenne, Wyoming 82009

### WELL LOCATION CERTIFICATE THIS MAP DOES NOT REPRESENT A BOUNDARY SURVEY

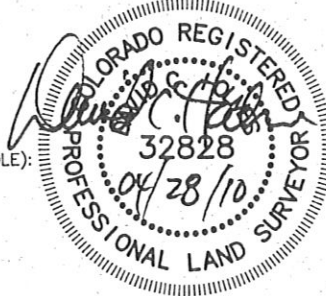
SECTION 25  
TOWNSHIP 6 NORTH  
RANGE 65 WEST



0 1000  
Scale: 1" = 1000'

IN ACCORDANCE WITH A REQUEST FROM MATT CAMPBELL - NOBLE ENERGY INC, STEIL SURVEYING SERVICES, LLC HAS DETERMINED THE LOCATION OF THE LDS E25-33D WELL TO BE 2395' FSL, 255' FWL, AS MEASURED AT NINETY (90) DEGREES FROM THE SECTION LINES, SECTION 25, TOWNSHIP 6 NORTH, RANGE 65 WEST, 6TH PRINCIPLE MERIDIAN, WELD COUNTY, COLORADO.

I HEREBY CERTIFY THAT THIS WELL LOCATION CERTIFICATE WAS PREPARED BY ME, OR UNDER MY DIRECT SUPERVISION, THAT THE FIELD WORK WAS COMPLETED ON 04/20/2010, FOR AND ON BEHALF OF NOBLE ENERGY INC, THAT IT IS NOT A LAND SURVEY PLAT OR AN IMPROVEMENT SURVEY PLAT, AND THAT IT IS NOT TO BE RELIED UPON FOR ESTABLISHMENT OF FENCE, BUILDING, OR OTHER FUTURE IMPROVEMENT LINES.



NOTES:

- 1) BASIS OF BEARINGS FOR THIS MAP ARE BASED UPON GPS OBSERVATIONS MADE ON 04/20/2010 BETWEEN MONUMENTS LOCATED AT THE SOUTHEAST SECTION CORNER AND THE NORTHEAST SECTION CORNER OF SAID SECTION AND WITH ALL BEARINGS SHOWN HEREON RELATIVE THERETO.
- 2) ELEVATIONS ARE BASED UPON NGS OPUS SOLUTION NAVD 88 DATUM.
- 3) THE NEAREST EXISTING WELL IS: NOFFSINGER E25-12, 853' SOUTHEAST.
- 4) SEE VISIBLE IMPROVEMENTS EXHIBIT FOR ALL IMPROVEMENTS WITHIN 400'.
- 5) THE LOCATION FALLS IN CROP LAND.

LATITUDE & LONGITUDE (NAD 83 SURFACE HOLE):  
 LATITUDE: N 40.45626°  
 LONGITUDE: W 104.61985°  
 PDOP: 2.2  
 QUARTER-QUARTER: NW/4SW/4  
 NEAREST PROPERTY LINE: 245' NORTH

LEGEND

- (A) FOUND SURVEY MONUMENT PER MONUMENT RECORD - EXCEPTIONS NOTED.
- (C) CALCULATED DIMENSION

NOTICE: According to Colorado law you MUST commence any legal action based upon any defect in this W.L.C. within three years after you first discover such defect. In no event may any action based upon any defect in this W.L.C. be commenced more than ten years from this sold date of the certification shown hereon.

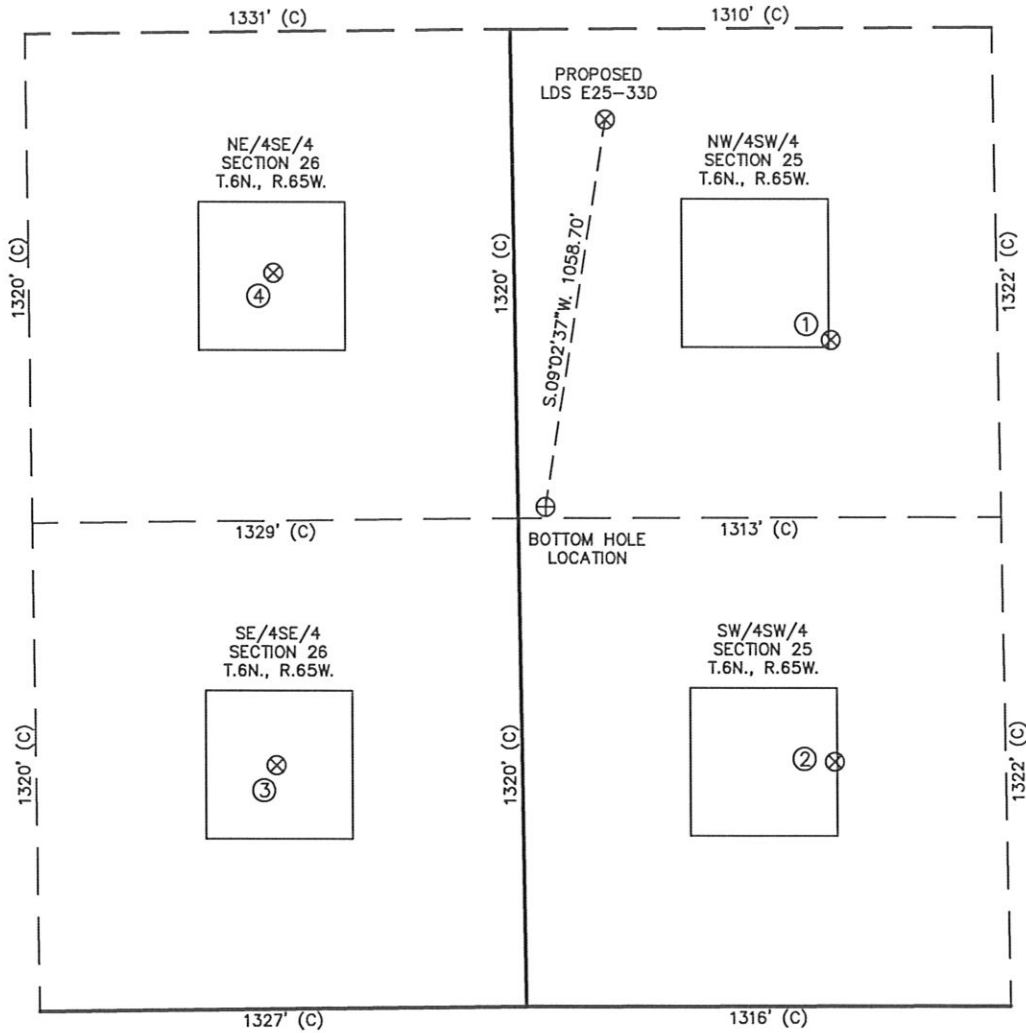
David C. Holmes  
 Professional Land Surveyor Registration No. 32828  
 State of Colorado

JOB #: 10086

Completed 04/28/2010

SKETCH - LDS E25-33D

SECTION 25  
TOWNSHIP 6 NORTH  
RANGE 65 WEST



①	②	③	④
NOFFSINGER E25-12 NW/SW SEC. 25 1800' FSL 860' FWL EL 4674' N 40.45461 W 104.61767 PDOP 2.0	NOFFSINGER E25-13 SW/SW SEC. 25 660' FSL 851' FWL EL 4669' N 40.45149 W 104.61769 PDOP 2.9	LYSTER 4-26EG SE/SE SEC. 26 659' FSL 670' FEL EL 4679' N 40.45149 W 104.62316 PDOP 2.8	LYSTER 9-26EG NE/SE SEC. 26 1988' FSL 657' FEL EL 4687' N 40.45514 W 104.62312 PDOP 2.3

NOTES:

- 1) THIS SKETCH DOES NOT REPRESENT A BOUNDARY SURVEY.
- 2) THE DATUM FOR THE LATITUDES AND LONGITUDES ON THIS SKETCH IS NAD83.



Scale: 1" = 500'