

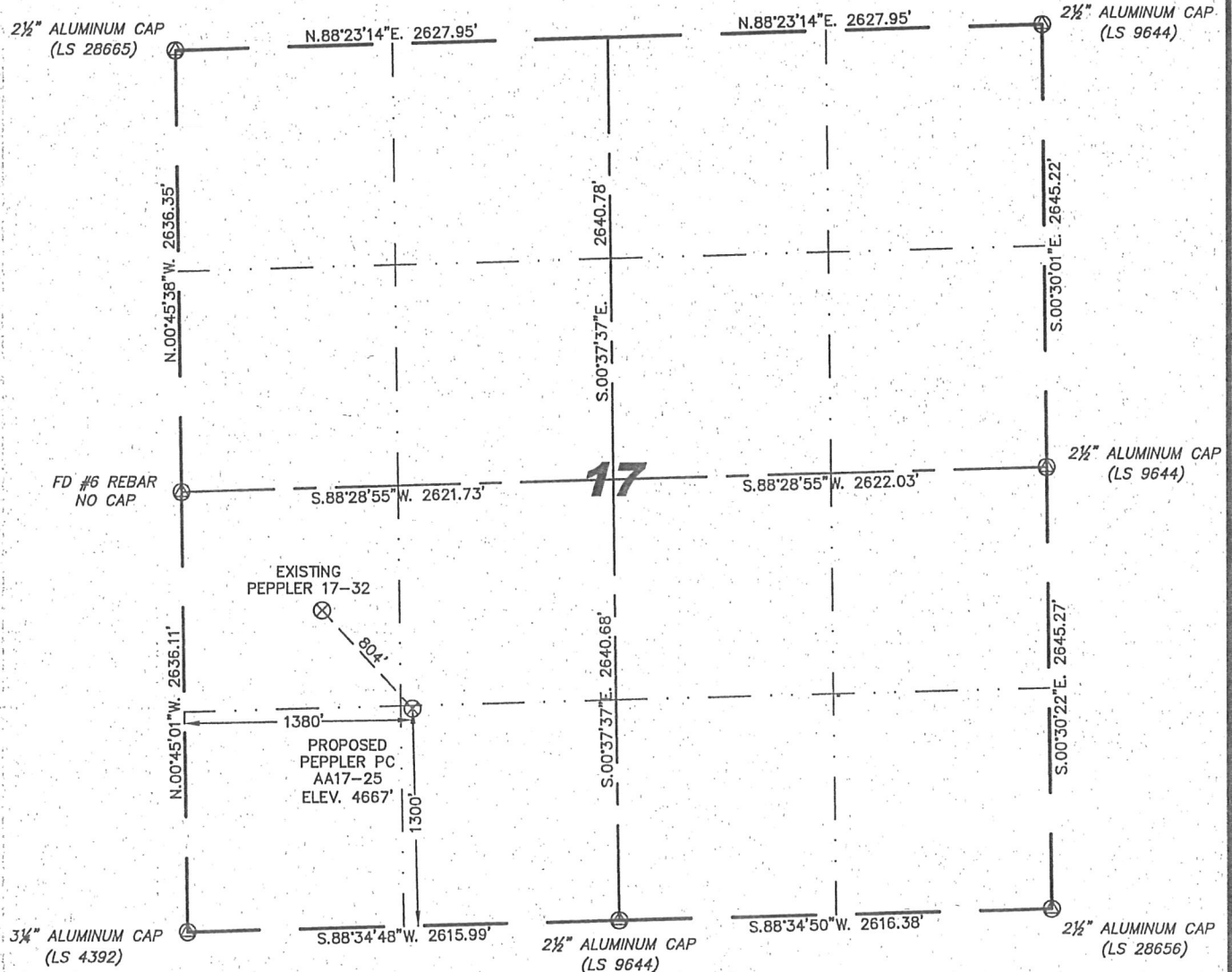
Steil Surveying Services, LLC

1102 West 19th Street P.O. BOX 2073

Cheyenne, Wyoming 82009

WELL LOCATION CERTIFICATE  
THIS MAP DOES NOT REPRESENT A BOUNDARY SURVEY

SECTION 17  
TOWNSHIP 6 NORTH  
RANGE 63 WEST



0 1000

Scale: 1" = 1000'

IN ACCORDANCE WITH A REQUEST FROM ERIK VAN DECAR - NOBLE ENERGY INC, STEIL SURVEYING SERVICES, LLC HAS DETERMINED THE LOCATION OF THE PEPPLER PC AA17-25 WELL TO BE 1300' FSL, 1380' FWL, AS MEASURED AT NINETY (90) DEGREES FROM THE SECTION LINES, SECTION 17, TOWNSHIP 6 NORTH, RANGE 63 WEST, 6TH PRINCIPLE MERIDIAN, WELD COUNTY, COLORADO.

I HEREBY CERTIFY THAT THIS WELL LOCATION CERTIFICATE WAS PREPARED BY ME, OR UNDER MY DIRECT SUPERVISION, THAT THE FIELD WORK WAS COMPLETED ON 06/28/2010, FOR AND ON BEHALF OF NOBLE ENERGY INC, THAT IT IS NOT A LAND SURVEY PLAT OR AN IMPROVEMENT SURVEY PLAT, AND THAT IT IS NOT TO BE RELIED UPON FOR ESTABLISHMENT OF FENCE, BUILDING, OR OTHER FUTURE IMPROVEMENT LINES.

NOTES:

- 1) BASIS OF BEARINGS FOR THIS MAP ARE BASED UPON GPS OBSERVATIONS MADE ON 06/11/2010 BETWEEN MONUMENTS LOCATED AT THE SOUTHEAST SECTION CORNER AND THE NORTHEAST SECTION CORNER OF SAID SECTION AND WITH ALL BEARINGS SHOWN HEREON RELATIVE THERETO.
- 2) ELEVATIONS ARE BASED UPON NGS OPUS SOLUTION NAVD 88 DATUM.
- 3) THE NEAREST EXISTING WELL IS: PEPPLER 17-32, 804' NORTHWEST.
- 4) SEE VISIBLE IMPROVEMENTS EXHIBIT FOR ALL IMPROVEMENTS WITHIN 600'.
- 5) THE LOCATION FALLS IN IRRIGATED CROP LAND.

LATITUDE & LONGITUDE (NAD 83 SURFACE HOLE):

LATITUDE: N 40.48287°

LONGITUDE: W 104.46537°

PDOP: 1.7

QUARTER-QUARTER: SE/4SW/4

NEAREST PROPERTY LINE: 1239' TO THE EAST

LEGEND

FOUND SURVEY MONUMENT PER MONUMENT RECORD - EXCEPTIONS NOTED.

(C) CALCULATED DIMENSION

NOTICE: According to Colorado law you MUST commence any legal action based upon any defect in this W.L.C. within three years after you first discover such defect. In no event may any action based upon any defect in this W.L.C. be commenced more than ten years from this sold date of the certification shown hereon.

David C. Holmes  
Professional Land Surveyor Registration No. 32828  
State of Colorado

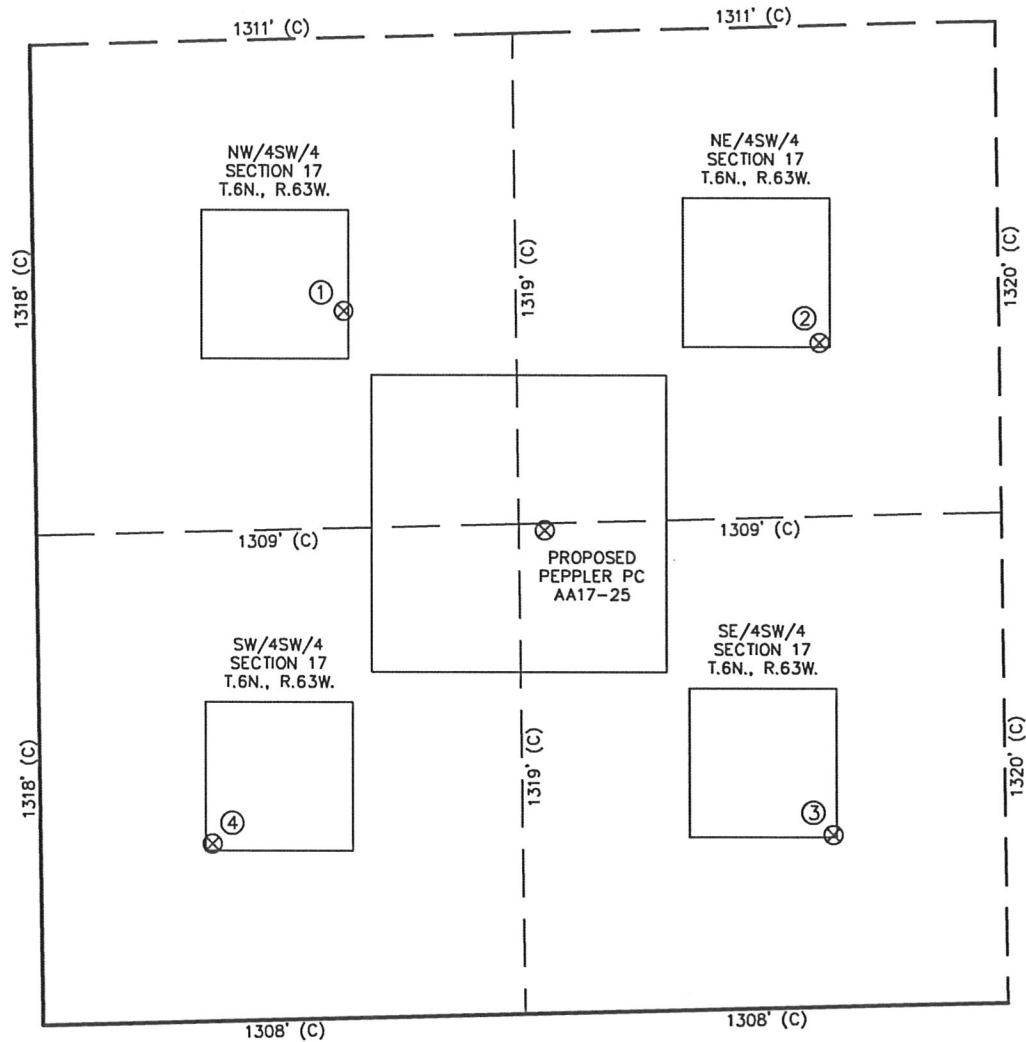
JOB #: 10086

Completed 07/08/2010



# SKETCH — PEPPLER PC AA17-25

SECTION 17  
TOWNSHIP 6 NORTH  
RANGE 63 WEST



①	②	③	④
PEPPLER 17-32 NW/SW SEC. 17 1903' FSL 841' FWL EL 4680' N 40.48450 W 104.46730 PDOP 2.3	PEPPLER 17-31 NE/SW SEC. 17 1786' FSL 2134' FWL EL 4670' N 40.48423 W 104.46266 PDOP 3.8	PEPPLER 17-34 SE/SW SEC. 17 462' FSL 2152' FWL EL 4668' N 40.48059 W 104.46259 PDOP 3.6	PEPPLER 17-33 SW/SW SEC. 17 478' FSL 465' FWL EL 4664' N 40.48058 W 104.46865 PDOP 4.0

## NOTES:

- THIS SKETCH DOES NOT REPRESENT A BOUNDARY SURVEY.
- THE DATUM FOR THE LATITUDES AND LONGITUDES ON THIS SKETCH IS NAD83.

