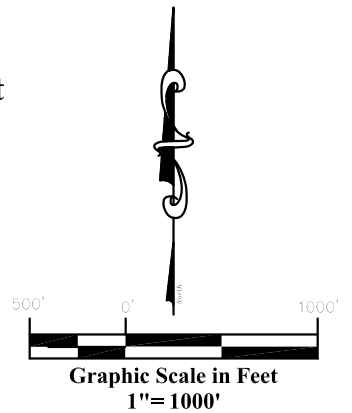
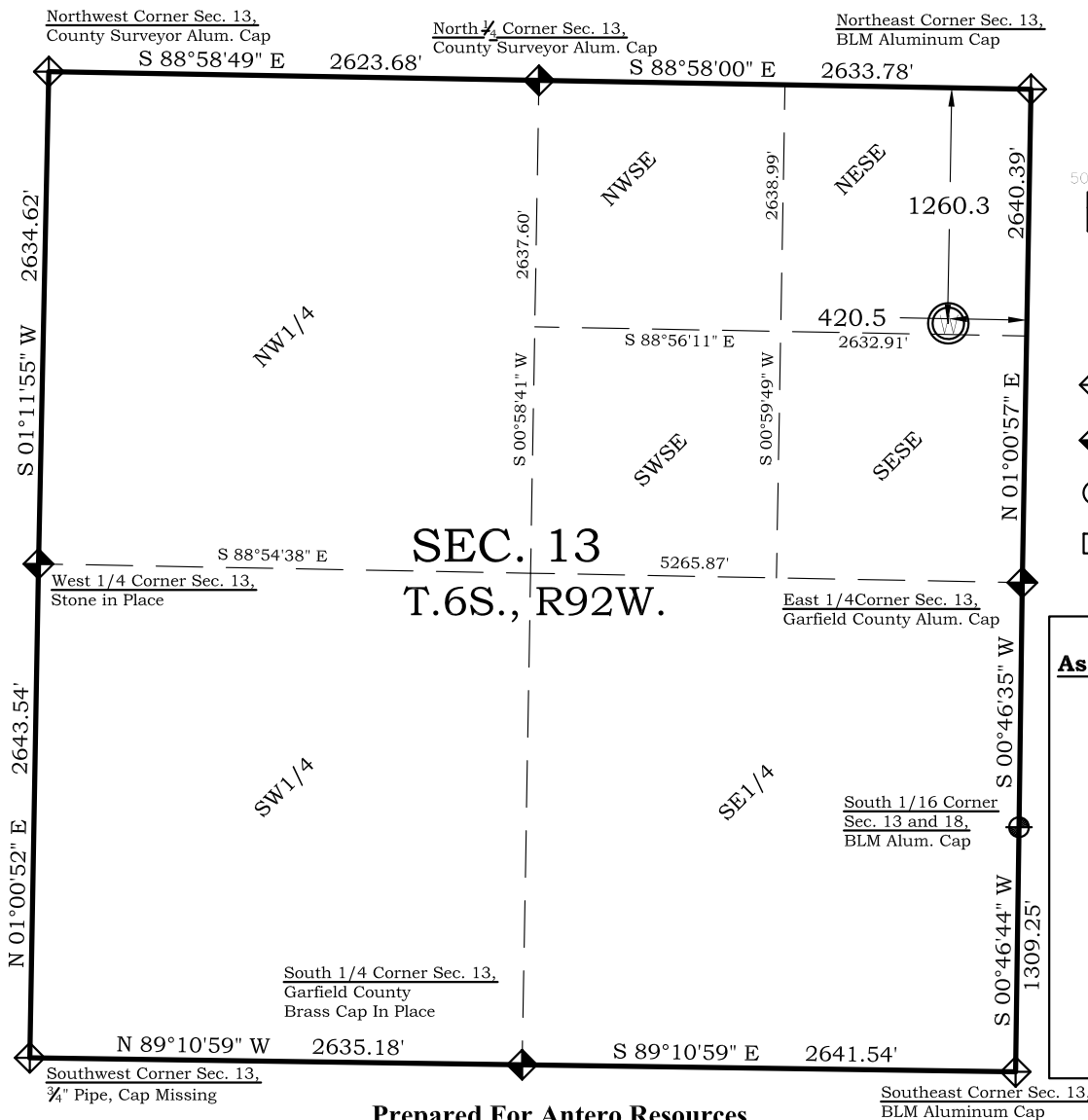


As Drilled Location Plat

McLin B5 Well

Section 13, Township 6 South, Range 92 West



Legend

- ◊ - Field Surveyed Section Corner
- ◆ - Field Surveyed Quarter Corner
- ⊙ - Calculated Section Corner Location
- ◻ - Field Surveyed 1/6 Corner

McLin B5 As Drilled Surface Location

1260' FNL
420' FEL
Gnd El= 5648.8
NAD83
Lat: 39.531009878°N
Long: 107.607939424°W
NAD27
Lat: 39.531029268°N
Long: 107.607326309°W
UTM 13 NORTH
NAD 1983
Northing
14366618.670
Easting
905040.065

Prepared For Antero Resources
As Drilled McLin B5 Well Situate in The NE 1/4 NE 1/4 Section
13, Township 6 South, Range 92 West of the 6 th. Principal
Meridian, County of Garfield, State of Colorado

SURVEYOR'S CERTIFICATE

I, SCOTT E. AIBNER, A REGISTERED LAND SURVEYOR, LICENSED UNDER THE LAWS OF THE STATE OF COLORADO DO HEREBY CERTIFY THAT THE SURVEY SHOWN HEREON WAS PREPARED BY RIVER VALLEY SURVEY, INC., FOR ANTERO RESOURCES, BY ME OR UNDER MY DIRECT SUPERVISION AND THAT THIS PLAT IS A TRUE REPRESENTATION THEREOF.

BY: 
SCOTT E. AIBNER, COLORADO REG. NO. 31143

Notes

- 1.) LATITUDE AND LONGITUDE COORDINATES ARE DIFFERENTIALLY CORRECTED AND BASED ON PUBLISHED NGS CONTROL STATION "WDP-5". SYSTEM: UTM ZONE: 13 NORTH DATUM: NAD 1983 (CONUS)
- 2.) ELEVATIONS ARE BASED ON NGVD OF 1929.
- 3.) ALL AS DRILLED HOLE LOCATIONS ARE MEASURED 90 DEGREES FROM SECTION LINE.
- 4.) USGS QUADRANGLE MAP "SILT CO".
- 5.) CURRENT SURFACE LAND USE: GRAVEL PIT
- 6.) PDOP AT TIME OF LOCATION OF SURFACE WELL = 1.3



River Valley Survey, Inc.
110 East 3rd. Street, Suite 207
Rifle, Colorado 81650
Ph: 970-379-7846

Project: McLin B PAD

Field Date: 07-22-10

Date: 07-23-2010

Scale: 1"= 1000'

Sheet: 1 of 1

As Drilled Well Location Plat
Prepared For Antero Resources

Situate In:
NE 1/4 Section 13, T6S., R. 92 W. of the
6th P.M., Garfield County, Colorado

