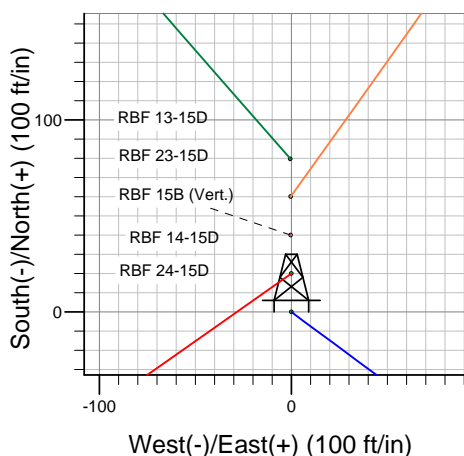
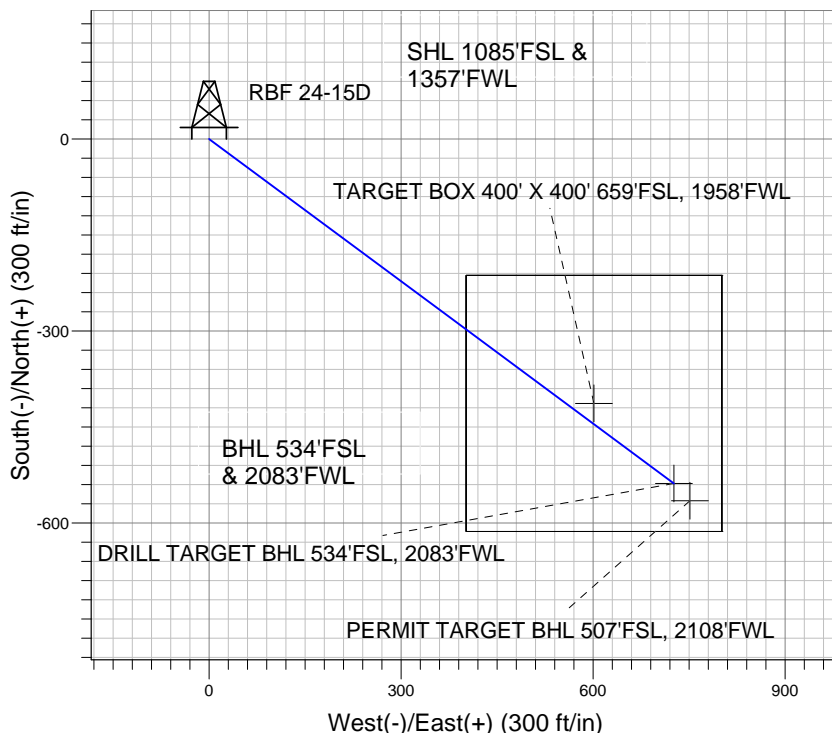
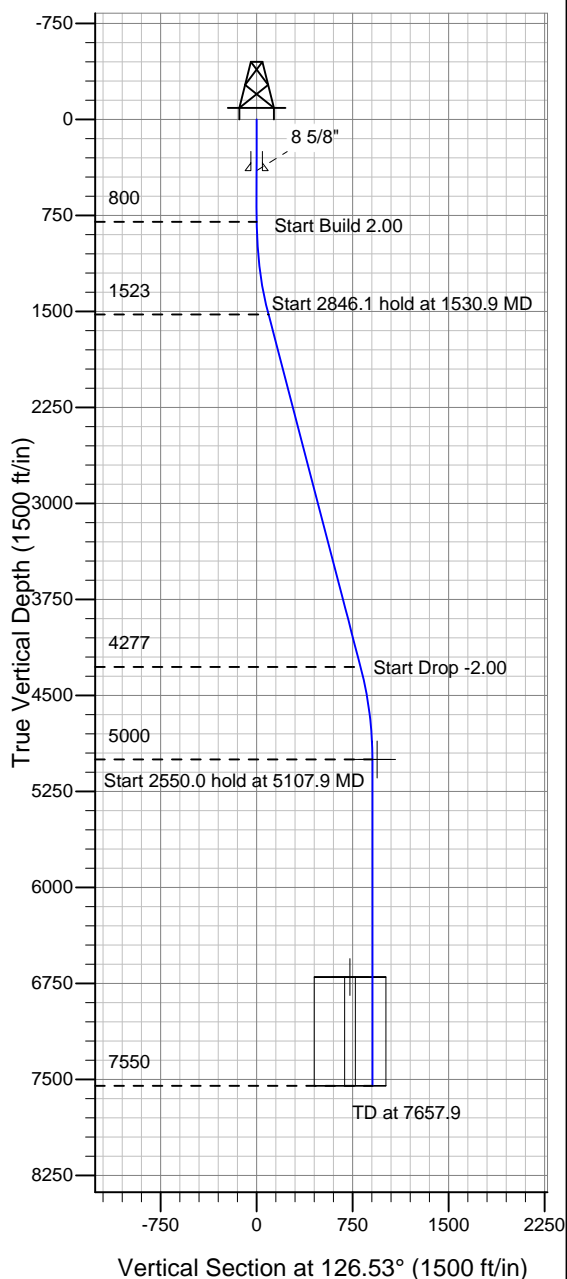


Synergy Resources



RBF 24-15D
Plan #2 (7-06-10)
14:35, July 06 2010



Azimuths to True North
Magnetic North: 9.08°
Magnetic Field
Strength: 53278.6snT
Dip Angle: 67.14°
Date: 5/8/2010
Model: IGRF2010

WELLBORE TARGET DETAILS (LAT/LONG)

Name	TVD	+N/-S	+E/-W	Latitude	Longitude	Shape
DRILL TARGET BHL 534'FSL, 2083'FWL	5000.0	-538.0	726.2	40° 28' 52.130 N	104° 52' 53.553 W	Point
PERMIT TARGET BHL 507'FSL, 2108'FWL	5000.0	-565.0	751.2	40° 28' 51.863 N	104° 52' 53.230 W	Point
TARGET BOX 400' X 400' 659'FSL, 1958'FWL	6700.0	-413.0	601.2	40° 28' 53.365 N	104° 52' 55.171 W	Rectangle (Sides: L400.0 W400.0)

SECTION DETAILS

Sec	MD	Inc	Azi	TVD	+N/-S	+E/-W	DLeg	TFace	VSec	Target
1	0.0	0.00	0.00	0.0	0.0	0.0	0.00	0.00	0.0	
2	800.0	0.00	0.00	800.0	0.0	0.0	0.00	0.00	0.0	
3	1530.9	14.62	126.53	1523.0	-55.2	74.5	2.00	126.53	92.7	
4	4377.0	14.62	126.53	4277.0	-482.8	651.7	0.00	0.00	811.0	
5	5107.9	0.00	0.00	5000.0	-538.0	726.2	2.00	180.00	903.8	DRILL TARGET BHL 534'FSL, 2083'FWL
6	7657.9	0.00	0.00	7550.0	-538.0	726.2	0.00	0.00	903.8	



Synergy Resources

SEC.15-T6N-R67W

RBF 24-15D Pad Sec.15-T6N-R67W

RBF 24-15D

Wellbore #1

Plan: Plan #2 (7-06-10)

Standard Planning Report

06 July, 2010

Database:	Landmark	Local Co-ordinate Reference:	Well RBF 24-15D
Company:	Synergy Resources	TVD Reference:	WELL @ 4793.0ft (Original Well Elev)
Project:	SEC.15-T6N-R67W	MD Reference:	WELL @ 4793.0ft (Original Well Elev)
Site:	RBF 24-15D Pad Sec.15-T6N-R67W	North Reference:	True
Well:	RBF 24-15D	Survey Calculation Method:	Minimum Curvature
Wellbore:	Wellbore #1		
Design:	Plan #2 (7-06-10)		

Project	SEC.15-T6N-R67W, Weld County, Colorado		
Map System:	US State Plane 1983	System Datum:	Mean Sea Level
Geo Datum:	North American Datum 1983		
Map Zone:	Colorado Northern Zone		Using geodetic scale factor

Site						RBF 24-15D Pad Sec.15-T6N-R67W							
Site Position: From:			Lat/Long			Northing:		1,419,255.21 ft		Latitude:		40° 28' 57.446 N	
						Easting:		3,171,309.35 ft		Longitude:		104° 53' 2.951 W	
Position Uncertainty:			0.0 ft			Slot Radius:		"		Grid Convergence:		0.40 °	

Well	RBF 24-15D					
Well Position	+N-S	0.0 ft	Northing:	1,419,255.20 ft	Latitude:	40° 28' 57.446 N
	+E-W	0.0 ft	Easting:	3,171,309.35 ft	Longitude:	104° 53' 2.951 W
Position Uncertainty		0.0 ft	Wellhead Elevation:	ft	Ground Level:	4,780.0 ft

Wellbore	Wellbore #1				
Magnetics	Model Name	Sample Date	Declination (°)	Dip Angle (°)	Field Strength (nT)
	IGRF2010	5/8/2010	9.09	67.14	53,279

Design	Plan #2 (7-06-10)			
Audit Notes:				
Version:	Phase:	PROTOTYPE	Tie On Depth:	0.0
Vertical Section:	Depth From (TVD) (ft)	+N-S (ft)	+E-W (ft)	Direction (°)
	0.0	0.0	0.0	126.53

Plan Sections										
Measured Depth (ft)	Inclination (°)	Azimuth (°)	Vertical Depth (ft)	+N-S (ft)	+E-W (ft)	Dogleg Rate (°/100ft)	Build Rate (°/100ft)	Turn Rate (°/100ft)	TFO (°)	Target
0.0	0.00	0.00	0.0	0.0	0.0	0.00	0.00	0.00	0.00	
800.0	0.00	0.00	800.0	0.0	0.0	0.00	0.00	0.00	0.00	
1,530.9	14.62	126.53	1,523.0	-55.2	74.5	2.00	2.00	0.00	126.53	
4,377.0	14.62	126.53	4,277.0	-482.8	651.7	0.00	0.00	0.00	0.00	
5,107.9	0.00	0.00	5,000.0	-538.0	726.2	2.00	-2.00	0.00	180.00	DRILL TARGET BH-
7,657.9	0.00	0.00	7,550.0	-538.0	726.2	0.00	0.00	0.00	0.00	

Database:	Landmark	Local Co-ordinate Reference:	Well RBF 24-15D
Company:	Synergy Resources	TVD Reference:	WELL @ 4793.0ft (Original Well Elev)
Project:	SEC.15-T6N-R67W	MD Reference:	WELL @ 4793.0ft (Original Well Elev)
Site:	RBF 24-15D Pad Sec.15-T6N-R67W	North Reference:	True
Well:	RBF 24-15D	Survey Calculation Method:	Minimum Curvature
Wellbore:	Wellbore #1		
Design:	Plan #2 (7-06-10)		

Planned Survey									
Measured Depth (ft)	Inclination (°)	Azimuth (°)	Vertical Depth (ft)	+N/-S (ft)	+E/-W (ft)	Vertical Section (ft)	Dogleg Rate (°/100ft)	Build Rate (°/100ft)	Turn Rate (°/100ft)
0.0	0.00	0.00	0.0	0.0	0.0	0.0	0.00	0.00	0.00
40.0	0.00	0.00	40.0	0.0	0.0	0.0	0.00	0.00	0.00
80.0	0.00	0.00	80.0	0.0	0.0	0.0	0.00	0.00	0.00
120.0	0.00	0.00	120.0	0.0	0.0	0.0	0.00	0.00	0.00
160.0	0.00	0.00	160.0	0.0	0.0	0.0	0.00	0.00	0.00
200.0	0.00	0.00	200.0	0.0	0.0	0.0	0.00	0.00	0.00
240.0	0.00	0.00	240.0	0.0	0.0	0.0	0.00	0.00	0.00
280.0	0.00	0.00	280.0	0.0	0.0	0.0	0.00	0.00	0.00
320.0	0.00	0.00	320.0	0.0	0.0	0.0	0.00	0.00	0.00
360.0	0.00	0.00	360.0	0.0	0.0	0.0	0.00	0.00	0.00
400.0	0.00	0.00	400.0	0.0	0.0	0.0	0.00	0.00	0.00
8 5/8"									
440.0	0.00	0.00	440.0	0.0	0.0	0.0	0.00	0.00	0.00
480.0	0.00	0.00	480.0	0.0	0.0	0.0	0.00	0.00	0.00
520.0	0.00	0.00	520.0	0.0	0.0	0.0	0.00	0.00	0.00
560.0	0.00	0.00	560.0	0.0	0.0	0.0	0.00	0.00	0.00
600.0	0.00	0.00	600.0	0.0	0.0	0.0	0.00	0.00	0.00
640.0	0.00	0.00	640.0	0.0	0.0	0.0	0.00	0.00	0.00
680.0	0.00	0.00	680.0	0.0	0.0	0.0	0.00	0.00	0.00
720.0	0.00	0.00	720.0	0.0	0.0	0.0	0.00	0.00	0.00
760.0	0.00	0.00	760.0	0.0	0.0	0.0	0.00	0.00	0.00
800.0	0.00	0.00	800.0	0.0	0.0	0.0	0.00	0.00	0.00
840.0	0.80	126.53	840.0	-0.2	0.2	0.3	2.00	2.00	0.00
880.0	1.60	126.53	880.0	-0.7	0.9	1.1	2.00	2.00	0.00
920.0	2.40	126.53	920.0	-1.5	2.0	2.5	2.00	2.00	0.00
960.0	3.20	126.53	959.9	-2.7	3.6	4.5	2.00	2.00	0.00
1,000.0	4.00	126.53	999.8	-4.2	5.6	7.0	2.00	2.00	0.00
1,040.0	4.80	126.53	1,039.7	-6.0	8.1	10.0	2.00	2.00	0.00
1,080.0	5.60	126.53	1,079.6	-8.1	11.0	13.7	2.00	2.00	0.00
1,120.0	6.40	126.53	1,119.3	-10.6	14.3	17.9	2.00	2.00	0.00
1,160.0	7.20	126.53	1,159.1	-13.4	18.2	22.6	2.00	2.00	0.00
1,200.0	8.00	126.53	1,198.7	-16.6	22.4	27.9	2.00	2.00	0.00
1,240.0	8.80	126.53	1,238.3	-20.1	27.1	33.7	2.00	2.00	0.00
1,280.0	9.60	126.53	1,277.8	-23.9	32.2	40.1	2.00	2.00	0.00
1,320.0	10.40	126.53	1,317.1	-28.0	37.8	47.1	2.00	2.00	0.00
1,360.0	11.20	126.53	1,356.4	-32.5	43.8	54.6	2.00	2.00	0.00
1,400.0	12.00	126.53	1,395.6	-37.3	50.3	62.6	2.00	2.00	0.00
1,440.0	12.80	126.53	1,434.7	-42.4	57.2	71.2	2.00	2.00	0.00
1,480.0	13.60	126.53	1,473.6	-47.8	64.5	80.3	2.00	2.00	0.00
1,520.0	14.40	126.53	1,512.4	-53.6	72.3	90.0	2.00	2.00	0.00
1,530.9	14.62	126.53	1,523.0	-55.2	74.5	92.7	2.00	2.00	0.00
1,560.0	14.62	126.53	1,551.2	-59.6	80.4	100.1	0.00	0.00	0.00
1,600.0	14.62	126.53	1,589.9	-65.6	88.5	110.2	0.00	0.00	0.00
1,640.0	14.62	126.53	1,628.6	-71.6	96.6	120.3	0.00	0.00	0.00
1,680.0	14.62	126.53	1,667.3	-77.6	104.7	130.4	0.00	0.00	0.00
1,720.0	14.62	126.53	1,706.0	-83.6	112.9	140.5	0.00	0.00	0.00
1,760.0	14.62	126.53	1,744.7	-89.6	121.0	150.6	0.00	0.00	0.00
1,800.0	14.62	126.53	1,783.4	-95.6	129.1	160.6	0.00	0.00	0.00
1,840.0	14.62	126.53	1,822.1	-101.6	137.2	170.7	0.00	0.00	0.00
1,880.0	14.62	126.53	1,860.8	-107.6	145.3	180.8	0.00	0.00	0.00
1,920.0	14.62	126.53	1,899.5	-113.7	153.4	190.9	0.00	0.00	0.00
1,960.0	14.62	126.53	1,938.2	-119.7	161.5	201.0	0.00	0.00	0.00
2,000.0	14.62	126.53	1,976.9	-125.7	169.6	211.1	0.00	0.00	0.00
2,040.0	14.62	126.53	2,015.6	-131.7	177.8	221.2	0.00	0.00	0.00

Database:	Landmark	Local Co-ordinate Reference:	Well RBF 24-15D
Company:	Synergy Resources	TVD Reference:	WELL @ 4793.0ft (Original Well Elev)
Project:	SEC.15-T6N-R67W	MD Reference:	WELL @ 4793.0ft (Original Well Elev)
Site:	RBF 24-15D Pad Sec.15-T6N-R67W	North Reference:	True
Well:	RBF 24-15D	Survey Calculation Method:	Minimum Curvature
Wellbore:	Wellbore #1		
Design:	Plan #2 (7-06-10)		

Planned Survey									
Measured Depth (ft)	Inclination (°)	Azimuth (°)	Vertical Depth (ft)	+N/-S (ft)	+E/-W (ft)	Vertical Section (ft)	Dogleg Rate (°/100ft)	Build Rate (°/100ft)	Turn Rate (°/100ft)
2,080.0	14.62	126.53	2,054.3	-137.7	185.9	231.3	0.00	0.00	0.00
2,120.0	14.62	126.53	2,093.0	-143.7	194.0	241.4	0.00	0.00	0.00
2,160.0	14.62	126.53	2,131.7	-149.7	202.1	251.5	0.00	0.00	0.00
2,200.0	14.62	126.53	2,170.4	-155.7	210.2	261.6	0.00	0.00	0.00
2,240.0	14.62	126.53	2,209.1	-161.7	218.3	271.7	0.00	0.00	0.00
2,280.0	14.62	126.53	2,247.8	-167.7	226.4	281.8	0.00	0.00	0.00
2,320.0	14.62	126.53	2,286.6	-173.8	234.5	291.9	0.00	0.00	0.00
2,360.0	14.62	126.53	2,325.3	-179.8	242.6	302.0	0.00	0.00	0.00
2,400.0	14.62	126.53	2,364.0	-185.8	250.8	312.1	0.00	0.00	0.00
2,440.0	14.62	126.53	2,402.7	-191.8	258.9	322.2	0.00	0.00	0.00
2,480.0	14.62	126.53	2,441.4	-197.8	267.0	332.3	0.00	0.00	0.00
2,520.0	14.62	126.53	2,480.1	-203.8	275.1	342.4	0.00	0.00	0.00
2,560.0	14.62	126.53	2,518.8	-209.8	283.2	352.5	0.00	0.00	0.00
2,600.0	14.62	126.53	2,557.5	-215.8	291.3	362.6	0.00	0.00	0.00
2,640.0	14.62	126.53	2,596.2	-221.8	299.4	372.6	0.00	0.00	0.00
2,680.0	14.62	126.53	2,634.9	-227.8	307.5	382.7	0.00	0.00	0.00
2,720.0	14.62	126.53	2,673.6	-233.8	315.7	392.8	0.00	0.00	0.00
2,760.0	14.62	126.53	2,712.3	-239.9	323.8	402.9	0.00	0.00	0.00
2,800.0	14.62	126.53	2,751.0	-245.9	331.9	413.0	0.00	0.00	0.00
2,840.0	14.62	126.53	2,789.7	-251.9	340.0	423.1	0.00	0.00	0.00
2,880.0	14.62	126.53	2,828.4	-257.9	348.1	433.2	0.00	0.00	0.00
2,920.0	14.62	126.53	2,867.1	-263.9	356.2	443.3	0.00	0.00	0.00
2,960.0	14.62	126.53	2,905.8	-269.9	364.3	453.4	0.00	0.00	0.00
3,000.0	14.62	126.53	2,944.5	-275.9	372.4	463.5	0.00	0.00	0.00
3,040.0	14.62	126.53	2,983.2	-281.9	380.5	473.6	0.00	0.00	0.00
3,080.0	14.62	126.53	3,021.9	-287.9	388.7	483.7	0.00	0.00	0.00
3,120.0	14.62	126.53	3,060.7	-293.9	396.8	493.8	0.00	0.00	0.00
3,160.0	14.62	126.53	3,099.4	-300.0	404.9	503.9	0.00	0.00	0.00
3,200.0	14.62	126.53	3,138.1	-306.0	413.0	514.0	0.00	0.00	0.00
3,240.0	14.62	126.53	3,176.8	-312.0	421.1	524.1	0.00	0.00	0.00
3,280.0	14.62	126.53	3,215.5	-318.0	429.2	534.2	0.00	0.00	0.00
3,320.0	14.62	126.53	3,254.2	-324.0	437.3	544.3	0.00	0.00	0.00
3,360.0	14.62	126.53	3,292.9	-330.0	445.4	554.4	0.00	0.00	0.00
3,400.0	14.62	126.53	3,331.6	-336.0	453.6	564.5	0.00	0.00	0.00
3,440.0	14.62	126.53	3,370.3	-342.0	461.7	574.6	0.00	0.00	0.00
3,480.0	14.62	126.53	3,409.0	-348.0	469.8	584.6	0.00	0.00	0.00
3,520.0	14.62	126.53	3,447.7	-354.0	477.9	594.7	0.00	0.00	0.00
3,560.0	14.62	126.53	3,486.4	-360.0	486.0	604.8	0.00	0.00	0.00
3,600.0	14.62	126.53	3,525.1	-366.1	494.1	614.9	0.00	0.00	0.00
3,640.0	14.62	126.53	3,563.8	-372.1	502.2	625.0	0.00	0.00	0.00
3,680.0	14.62	126.53	3,602.5	-378.1	510.3	635.1	0.00	0.00	0.00
3,720.0	14.62	126.53	3,641.2	-384.1	518.4	645.2	0.00	0.00	0.00
3,760.0	14.62	126.53	3,679.9	-390.1	526.6	655.3	0.00	0.00	0.00
3,800.0	14.62	126.53	3,718.6	-396.1	534.7	665.4	0.00	0.00	0.00
3,840.0	14.62	126.53	3,757.3	-402.1	542.8	675.5	0.00	0.00	0.00
3,880.0	14.62	126.53	3,796.1	-408.1	550.9	685.6	0.00	0.00	0.00
3,920.0	14.62	126.53	3,834.8	-414.1	559.0	695.7	0.00	0.00	0.00
3,960.0	14.62	126.53	3,873.5	-420.1	567.1	705.8	0.00	0.00	0.00
4,000.0	14.62	126.53	3,912.2	-426.1	575.2	715.9	0.00	0.00	0.00
4,040.0	14.62	126.53	3,950.9	-432.2	583.3	726.0	0.00	0.00	0.00
4,080.0	14.62	126.53	3,989.6	-438.2	591.4	736.1	0.00	0.00	0.00
4,120.0	14.62	126.53	4,028.3	-444.2	599.6	746.2	0.00	0.00	0.00
4,160.0	14.62	126.53	4,067.0	-450.2	607.7	756.3	0.00	0.00	0.00
4,200.0	14.62	126.53	4,105.7	-456.2	615.8	766.4	0.00	0.00	0.00

Database:	Landmark	Local Co-ordinate Reference:	Well RBF 24-15D
Company:	Synergy Resources	TVD Reference:	WELL @ 4793.0ft (Original Well Elev)
Project:	SEC.15-T6N-R67W	MD Reference:	WELL @ 4793.0ft (Original Well Elev)
Site:	RBF 24-15D Pad Sec.15-T6N-R67W	North Reference:	True
Well:	RBF 24-15D	Survey Calculation Method:	Minimum Curvature
Wellbore:	Wellbore #1		
Design:	Plan #2 (7-06-10)		

Planned Survey									
Measured Depth (ft)	Inclination (°)	Azimuth (°)	Vertical Depth (ft)	+N/-S (ft)	+E/-W (ft)	Vertical Section (ft)	Dogleg Rate (°/100ft)	Build Rate (°/100ft)	Turn Rate (°/100ft)
4,240.0	14.62	126.53	4,144.4	-462.2	623.9	776.5	0.00	0.00	0.00
4,280.0	14.62	126.53	4,183.1	-468.2	632.0	786.5	0.00	0.00	0.00
4,320.0	14.62	126.53	4,221.8	-474.2	640.1	796.6	0.00	0.00	0.00
4,360.0	14.62	126.53	4,260.5	-480.2	648.2	806.7	0.00	0.00	0.00
4,377.0	14.62	126.53	4,277.0	-482.8	651.7	811.0	0.00	0.00	0.00
4,400.0	14.16	126.53	4,299.2	-486.2	656.3	816.7	2.00	-2.00	0.00
4,440.0	13.36	126.53	4,338.1	-491.9	663.9	826.3	2.00	-2.00	0.00
4,480.0	12.56	126.53	4,377.1	-497.2	671.1	835.2	2.00	-2.00	0.00
4,520.0	11.76	126.53	4,416.2	-502.2	677.9	843.7	2.00	-2.00	0.00
4,560.0	10.96	126.53	4,455.4	-506.9	684.2	851.5	2.00	-2.00	0.00
4,600.0	10.16	126.53	4,494.7	-511.3	690.1	858.9	2.00	-2.00	0.00
4,640.0	9.36	126.53	4,534.1	-515.3	695.6	865.6	2.00	-2.00	0.00
4,680.0	8.56	126.53	4,573.6	-519.0	700.6	871.9	2.00	-2.00	0.00
4,720.0	7.76	126.53	4,613.2	-522.4	705.1	877.5	2.00	-2.00	0.00
4,760.0	6.96	126.53	4,652.9	-525.4	709.2	882.7	2.00	-2.00	0.00
4,800.0	6.16	126.53	4,692.7	-528.2	712.9	887.2	2.00	-2.00	0.00
4,840.0	5.36	126.53	4,732.4	-530.5	716.1	891.3	2.00	-2.00	0.00
4,880.0	4.56	126.53	4,772.3	-532.6	718.9	894.7	2.00	-2.00	0.00
4,920.0	3.76	126.53	4,812.2	-534.3	721.2	897.6	2.00	-2.00	0.00
4,960.0	2.96	126.53	4,852.1	-535.7	723.1	900.0	2.00	-2.00	0.00
5,000.0	2.16	126.53	4,892.1	-536.8	724.6	901.7	2.00	-2.00	0.00
5,040.0	1.36	126.53	4,932.1	-537.5	725.6	903.0	2.00	-2.00	0.00
5,080.0	0.56	126.53	4,972.1	-537.9	726.1	903.6	2.00	-2.00	0.00
5,107.9	0.00	0.00	5,000.0	-538.0	726.2	903.8	2.00	-2.00	-452.85
PERMIT TARGET BHL 507'FSL, 2108'FWL - DRILL TARGET BHL 534'FSL, 2083'FWL									
5,120.0	0.00	0.00	5,012.1	-538.0	726.2	903.8	0.00	0.00	0.00
5,160.0	0.00	0.00	5,052.1	-538.0	726.2	903.8	0.00	0.00	0.00
5,200.0	0.00	0.00	5,092.1	-538.0	726.2	903.8	0.00	0.00	0.00
5,240.0	0.00	0.00	5,132.1	-538.0	726.2	903.8	0.00	0.00	0.00
5,280.0	0.00	0.00	5,172.1	-538.0	726.2	903.8	0.00	0.00	0.00
5,320.0	0.00	0.00	5,212.1	-538.0	726.2	903.8	0.00	0.00	0.00
5,360.0	0.00	0.00	5,252.1	-538.0	726.2	903.8	0.00	0.00	0.00
5,400.0	0.00	0.00	5,292.1	-538.0	726.2	903.8	0.00	0.00	0.00
5,440.0	0.00	0.00	5,332.1	-538.0	726.2	903.8	0.00	0.00	0.00
5,480.0	0.00	0.00	5,372.1	-538.0	726.2	903.8	0.00	0.00	0.00
5,520.0	0.00	0.00	5,412.1	-538.0	726.2	903.8	0.00	0.00	0.00
5,560.0	0.00	0.00	5,452.1	-538.0	726.2	903.8	0.00	0.00	0.00
5,600.0	0.00	0.00	5,492.1	-538.0	726.2	903.8	0.00	0.00	0.00
5,640.0	0.00	0.00	5,532.1	-538.0	726.2	903.8	0.00	0.00	0.00
5,680.0	0.00	0.00	5,572.1	-538.0	726.2	903.8	0.00	0.00	0.00
5,720.0	0.00	0.00	5,612.1	-538.0	726.2	903.8	0.00	0.00	0.00
5,760.0	0.00	0.00	5,652.1	-538.0	726.2	903.8	0.00	0.00	0.00
5,800.0	0.00	0.00	5,692.1	-538.0	726.2	903.8	0.00	0.00	0.00
5,840.0	0.00	0.00	5,732.1	-538.0	726.2	903.8	0.00	0.00	0.00
5,880.0	0.00	0.00	5,772.1	-538.0	726.2	903.8	0.00	0.00	0.00
5,920.0	0.00	0.00	5,812.1	-538.0	726.2	903.8	0.00	0.00	0.00
5,960.0	0.00	0.00	5,852.1	-538.0	726.2	903.8	0.00	0.00	0.00
6,000.0	0.00	0.00	5,892.1	-538.0	726.2	903.8	0.00	0.00	0.00
6,040.0	0.00	0.00	5,932.1	-538.0	726.2	903.8	0.00	0.00	0.00
6,080.0	0.00	0.00	5,972.1	-538.0	726.2	903.8	0.00	0.00	0.00
6,120.0	0.00	0.00	6,012.1	-538.0	726.2	903.8	0.00	0.00	0.00
6,160.0	0.00	0.00	6,052.1	-538.0	726.2	903.8	0.00	0.00	0.00
6,200.0	0.00	0.00	6,092.1	-538.0	726.2	903.8	0.00	0.00	0.00
6,240.0	0.00	0.00	6,132.1	-538.0	726.2	903.8	0.00	0.00	0.00

Database:	Landmark	Local Co-ordinate Reference:	Well RBF 24-15D
Company:	Synergy Resources	TVD Reference:	WELL @ 4793.0ft (Original Well Elev)
Project:	SEC.15-T6N-R67W	MD Reference:	WELL @ 4793.0ft (Original Well Elev)
Site:	RBF 24-15D Pad Sec.15-T6N-R67W	North Reference:	True
Well:	RBF 24-15D	Survey Calculation Method:	Minimum Curvature
Wellbore:	Wellbore #1		
Design:	Plan #2 (7-06-10)		

Planned Survey									
Measured Depth (ft)	Inclination (°)	Azimuth (°)	Vertical Depth (ft)	+N/-S (ft)	+E/-W (ft)	Vertical Section (ft)	Dogleg Rate (°/100ft)	Build Rate (°/100ft)	Turn Rate (°/100ft)
6,280.0	0.00	0.00	6,172.1	-538.0	726.2	903.8	0.00	0.00	0.00
6,320.0	0.00	0.00	6,212.1	-538.0	726.2	903.8	0.00	0.00	0.00
6,360.0	0.00	0.00	6,252.1	-538.0	726.2	903.8	0.00	0.00	0.00
6,400.0	0.00	0.00	6,292.1	-538.0	726.2	903.8	0.00	0.00	0.00
6,440.0	0.00	0.00	6,332.1	-538.0	726.2	903.8	0.00	0.00	0.00
6,480.0	0.00	0.00	6,372.1	-538.0	726.2	903.8	0.00	0.00	0.00
6,520.0	0.00	0.00	6,412.1	-538.0	726.2	903.8	0.00	0.00	0.00
6,560.0	0.00	0.00	6,452.1	-538.0	726.2	903.8	0.00	0.00	0.00
6,600.0	0.00	0.00	6,492.1	-538.0	726.2	903.8	0.00	0.00	0.00
6,640.0	0.00	0.00	6,532.1	-538.0	726.2	903.8	0.00	0.00	0.00
6,680.0	0.00	0.00	6,572.1	-538.0	726.2	903.8	0.00	0.00	0.00
6,720.0	0.00	0.00	6,612.1	-538.0	726.2	903.8	0.00	0.00	0.00
6,760.0	0.00	0.00	6,652.1	-538.0	726.2	903.8	0.00	0.00	0.00
6,800.0	0.00	0.00	6,692.1	-538.0	726.2	903.8	0.00	0.00	0.00
6,807.9	0.00	0.00	6,700.0	-538.0	726.2	903.8	0.00	0.00	0.00
TARGET BOX 400' X 400' 659'FSL, 1958'FWL									
6,840.0	0.00	0.00	6,732.1	-538.0	726.2	903.8	0.00	0.00	0.00
6,880.0	0.00	0.00	6,772.1	-538.0	726.2	903.8	0.00	0.00	0.00
6,920.0	0.00	0.00	6,812.1	-538.0	726.2	903.8	0.00	0.00	0.00
6,960.0	0.00	0.00	6,852.1	-538.0	726.2	903.8	0.00	0.00	0.00
7,000.0	0.00	0.00	6,892.1	-538.0	726.2	903.8	0.00	0.00	0.00
7,040.0	0.00	0.00	6,932.1	-538.0	726.2	903.8	0.00	0.00	0.00
7,080.0	0.00	0.00	6,972.1	-538.0	726.2	903.8	0.00	0.00	0.00
7,120.0	0.00	0.00	7,012.1	-538.0	726.2	903.8	0.00	0.00	0.00
7,160.0	0.00	0.00	7,052.1	-538.0	726.2	903.8	0.00	0.00	0.00
7,200.0	0.00	0.00	7,092.1	-538.0	726.2	903.8	0.00	0.00	0.00
7,240.0	0.00	0.00	7,132.1	-538.0	726.2	903.8	0.00	0.00	0.00
7,280.0	0.00	0.00	7,172.1	-538.0	726.2	903.8	0.00	0.00	0.00
7,320.0	0.00	0.00	7,212.1	-538.0	726.2	903.8	0.00	0.00	0.00
7,360.0	0.00	0.00	7,252.1	-538.0	726.2	903.8	0.00	0.00	0.00
7,400.0	0.00	0.00	7,292.1	-538.0	726.2	903.8	0.00	0.00	0.00
7,440.0	0.00	0.00	7,332.1	-538.0	726.2	903.8	0.00	0.00	0.00
7,480.0	0.00	0.00	7,372.1	-538.0	726.2	903.8	0.00	0.00	0.00
7,520.0	0.00	0.00	7,412.1	-538.0	726.2	903.8	0.00	0.00	0.00
7,560.0	0.00	0.00	7,452.1	-538.0	726.2	903.8	0.00	0.00	0.00
7,600.0	0.00	0.00	7,492.1	-538.0	726.2	903.8	0.00	0.00	0.00
7,640.0	0.00	0.00	7,532.1	-538.0	726.2	903.8	0.00	0.00	0.00
7,657.9	0.00	0.00	7,550.0	-538.0	726.2	903.8	0.00	0.00	0.00

Database:	Landmark	Local Co-ordinate Reference:	Well RBF 24-15D
Company:	Synergy Resources	TVD Reference:	WELL @ 4793.0ft (Original Well Elev)
Project:	SEC.15-T6N-R67W	MD Reference:	WELL @ 4793.0ft (Original Well Elev)
Site:	RBF 24-15D Pad Sec.15-T6N-R67W	North Reference:	True
Well:	RBF 24-15D	Survey Calculation Method:	Minimum Curvature
Wellbore:	Wellbore #1		
Design:	Plan #2 (7-06-10)		

Targets									
Target Name									
- hit/miss target	Dip Angle	Dip Dir.	TVD	+N/-S	+E/-W	Northing	Easting	Latitude	Longitude
- Shape	(°)	(°)	(ft)	(ft)	(ft)	(ft)	(ft)		
PERMIT TARGET BH	0.00	0.00	5,000.0	-565.0	751.2	1,418,695.41	3,172,064.43	40° 28' 51.863 N	104° 52' 53.230 W
- plan misses by 36.8ft at 5107.9ft MD (5000.0 TVD, -538.0 N, 726.2 E)									
- Point									
DRILL TARGET BHL	0.00	0.00	5,000.0	-538.0	726.2	1,418,722.28	3,172,039.24	40° 28' 52.130 N	104° 52' 53.553 W
- plan hits target									
- Point									
TARGET BOX 400' X	0.00	0.00	6,700.0	-413.0	601.2	1,418,846.41	3,171,913.38	40° 28' 53.365 N	104° 52' 55.171 W
- plan misses by 176.8ft at 6807.9ft MD (6700.0 TVD, -538.0 N, 726.2 E)									
- Rectangle (sides W400.0 H400.0 D850.0)									

Casing Points					
	Measured Depth	Vertical Depth		Casing Diameter	Hole Diameter
	(ft)	(ft)	Name	(")	(")
	400.0	400.0	8 5/8"	8-5/8	12-1/4



Synergy Resources

SEC.15-T6N-R67W

RBF 24-15D Pad Sec.15-T6N-R67W

RBF 24-15D

Wellbore #1

Plan #2 (7-06-10)

Anticollision Report

06 July, 2010

Company:	Synergy Resources	Local Co-ordinate Reference:	Well RBF 24-15D
Project:	SEC.15-T6N-R67W	TVD Reference:	WELL @ 4793.0ft (Original Well Elev)
Reference Site:	RBF 24-15D Pad Sec.15-T6N-R67W	MD Reference:	WELL @ 4793.0ft (Original Well Elev)
Site Error:	0.0ft	North Reference:	True
Reference Well:	RBF 24-15D	Survey Calculation Method:	Minimum Curvature
Well Error:	0.0ft	Output errors are at	2.00 sigma
Reference Wellbore	Wellbore #1	Database:	Landmark
Reference Design:	Plan #2 (7-06-10)	Offset TVD Reference:	Offset Datum

Offset Design RBF 24-15D Pad Sec.15-T6N-R67W - RBF 14-15D - Wellbore #1 - Plan #1 (5-8-10)												Offset Site Error:	0.0ft
Survey Program: 0-MWD												Offset Well Error:	0.0ft
Reference		Offset		Semi Major Axis			Distance						Warning
Measured Depth (ft)	Vertical Depth (ft)	Measured Depth (ft)	Vertical Depth (ft)	Reference (ft)	Offset (ft)	Highside Toolface (°)	Offset Wellbore Centre +N/-S (ft)	+E/-W (ft)	Between Centres (ft)	Between Ellipses (ft)	Minimum Separation (ft)	Separation Factor	
2,400.0	2,364.0	2,303.4	2,275.5	7.9	6.8	149.55	-119.8	-198.4	462.8	450.9	11.85	39.064	
2,500.0	2,460.7	2,394.7	2,363.6	8.5	7.2	148.97	-133.6	-218.0	503.3	490.8	12.54	40.122	
2,600.0	2,557.5	2,486.0	2,451.7	9.0	7.7	148.47	-147.4	-237.6	543.9	530.7	13.25	41.052	
2,700.0	2,654.3	2,577.3	2,539.8	9.5	8.2	148.05	-161.2	-257.2	584.5	570.6	13.96	41.875	
2,800.0	2,751.0	2,668.6	2,627.9	10.1	8.7	147.68	-175.0	-276.7	625.2	610.5	14.67	42.607	
2,900.0	2,847.8	2,759.9	2,716.0	10.6	9.2	147.36	-188.8	-296.3	665.9	650.5	15.39	43.261	
3,000.0	2,944.5	2,851.2	2,804.1	11.2	9.7	147.07	-202.6	-315.9	706.5	690.4	16.11	43.849	
3,100.0	3,041.3	2,942.5	2,892.2	11.7	10.2	146.81	-216.4	-335.5	747.2	730.4	16.84	44.380	
3,200.0	3,138.1	3,033.8	2,980.3	12.2	10.7	146.58	-230.2	-355.1	787.9	770.4	17.56	44.861	
3,300.0	3,234.8	3,125.0	3,068.4	12.8	11.2	146.38	-244.0	-374.6	828.7	810.4	18.29	45.299	
3,400.0	3,331.6	3,216.3	3,156.4	13.3	11.7	146.19	-257.8	-394.2	869.4	850.4	19.02	45.698	
3,500.0	3,428.4	3,307.6	3,244.5	13.9	12.2	146.02	-271.6	-413.8	910.1	890.4	19.76	46.064	
3,600.0	3,525.1	3,398.9	3,332.6	14.4	12.7	145.86	-285.4	-433.4	950.9	930.4	20.49	46.401	
3,700.0	3,621.9	3,490.2	3,420.7	14.9	13.2	145.72	-299.2	-452.9	991.6	970.4	21.23	46.711	
3,800.0	3,718.6	3,581.5	3,508.8	15.5	13.7	145.59	-313.0	-472.5	1,032.4	1,010.4	21.97	46.997	
3,900.0	3,815.4	3,672.8	3,596.9	16.0	14.2	145.47	-326.8	-492.1	1,073.1	1,050.4	22.71	47.263	
4,000.0	3,912.2	3,764.1	3,685.0	16.6	14.7	145.35	-340.6	-511.7	1,113.9	1,090.4	23.45	47.509	
4,100.0	4,008.9	3,855.4	3,773.1	17.1	15.2	145.25	-354.4	-531.3	1,154.6	1,130.4	24.19	47.739	
4,200.0	4,105.7	3,946.7	3,861.2	17.7	15.7	145.15	-368.2	-550.8	1,195.4	1,170.5	24.93	47.954	
4,300.0	4,202.5	4,038.0	3,949.3	18.2	16.2	145.06	-382.0	-570.4	1,236.2	1,210.5	25.67	48.154	
4,377.0	4,277.0	4,108.3	4,017.2	18.6	16.6	144.99	-392.6	-585.5	1,267.6	1,241.3	26.24	48.300	
4,400.0	4,299.2	4,129.3	4,037.5	18.7	16.7	145.09	-395.8	-590.0	1,276.9	1,250.4	26.43	48.308	
4,500.0	4,396.6	4,221.4	4,126.3	19.1	17.2	145.42	-409.7	-609.7	1,315.7	1,288.5	27.19	48.391	
4,600.0	4,494.7	4,314.5	4,216.1	19.4	17.8	145.63	-423.8	-629.7	1,351.9	1,324.0	27.92	48.423	
4,700.0	4,593.4	4,408.4	4,306.8	19.7	18.3	145.72	-438.0	-649.8	1,385.5	1,356.8	28.62	48.413	
4,800.0	4,692.7	4,503.2	4,398.2	20.0	18.8	145.71	-452.3	-670.2	1,416.3	1,387.0	29.28	48.371	
4,900.0	4,792.2	4,598.5	4,490.2	20.2	19.3	145.60	-466.7	-690.6	1,444.5	1,414.6	29.90	48.304	
5,000.0	4,892.1	4,694.4	4,582.7	20.3	19.9	145.40	-481.2	-711.2	1,469.9	1,439.5	30.49	48.218	
5,107.9	5,000.0	4,798.4	4,683.1	20.5	20.5	-88.39	-496.9	-733.5	1,494.4	1,463.4	31.07	48.093	
5,200.0	5,092.1	4,903.2	4,784.3	20.6	21.0	-89.02	-512.6	-755.8	1,514.0	1,482.4	31.60	47.917	
5,300.0	5,192.1	5,076.0	4,952.8	20.7	21.6	-89.87	-534.6	-786.9	1,532.0	1,499.9	32.19	47.587	
5,400.0	5,292.1	5,252.8	5,127.3	20.8	22.1	-90.48	-550.9	-810.1	1,545.3	1,512.5	32.73	47.208	
5,500.0	5,392.1	5,432.6	5,306.2	20.9	22.5	-90.86	-561.2	-824.6	1,553.4	1,520.2	33.21	46.780	
5,600.0	5,492.1	5,614.0	5,487.4	21.0	22.8	-90.99	-564.9	-830.0	1,556.4	1,522.8	33.62	46.300	
5,700.0	5,592.1	5,719.6	5,593.1	21.1	22.9	-90.99	-565.0	-830.0	1,556.4	1,522.5	33.90	45.913	
5,800.0	5,692.1	5,819.6	5,693.1	21.3	23.0	-90.99	-565.0	-830.0	1,556.4	1,522.3	34.18	45.543	
5,900.0	5,792.1	5,919.6	5,793.1	21.4	23.1	-90.99	-565.0	-830.0	1,556.4	1,522.0	34.45	45.174	
6,000.0	5,892.1	6,019.6	5,893.1	21.5	23.2	-90.99	-565.0	-830.0	1,556.4	1,521.7	34.74	44.807	
6,100.0	5,992.1	6,119.6	5,993.1	21.6	23.3	-90.99	-565.0	-830.0	1,556.4	1,521.4	35.02	44.441	
6,200.0	6,092.1	6,219.6	6,093.1	21.7	23.4	-90.99	-565.0	-830.0	1,556.4	1,521.1	35.31	44.077	
6,300.0	6,192.1	6,319.6	6,193.1	21.9	23.6	-90.99	-565.0	-830.0	1,556.4	1,520.8	35.60	43.714	
6,400.0	6,292.1	6,419.6	6,293.1	22.0	23.7	-90.99	-565.0	-830.0	1,556.4	1,520.5	35.90	43.354	
6,500.0	6,392.1	6,519.6	6,393.1	22.1	23.8	-90.99	-565.0	-830.0	1,556.4	1,520.2	36.20	42.996	
6,600.0	6,492.1	6,619.6	6,493.1	22.2	23.9	-90.99	-565.0	-830.0	1,556.4	1,519.9	36.50	42.640	
6,700.0	6,592.1	6,719.6	6,593.1	22.4	24.0	-90.99	-565.0	-830.0	1,556.4	1,519.6	36.81	42.286	
6,800.0	6,692.1	6,819.6	6,693.1	22.5	24.1	-90.99	-565.0	-830.0	1,556.4	1,519.3	37.12	41.935	
6,900.0	6,792.1	6,919.6	6,793.1	22.6	24.3	-90.99	-565.0	-830.0	1,556.4	1,519.0	37.43	41.587	
7,000.0	6,892.1	7,019.6	6,893.1	22.8	24.4	-90.99	-565.0	-830.0	1,556.4	1,518.7	37.74	41.241	
7,100.0	6,992.1	7,119.6	6,993.1	22.9	24.5	-90.99	-565.0	-830.0	1,556.4	1,518.4	38.06	40.898	
7,200.0	7,092.1	7,219.6	7,093.1	23.1	24.6	-90.99	-565.0	-830.0	1,556.4	1,518.1	38.38	40.558	
7,300.0	7,192.1	7,319.6	7,193.1	23.2	24.8	-90.99	-565.0	-830.0	1,556.4	1,517.7	38.70	40.221	
7,400.0	7,292.1	7,419.6	7,293.1	23.3	24.9	-90.99	-565.0	-830.0	1,556.4	1,517.4	39.02	39.886	

CC - Min centre to center distance or convergent point, SF - min separation factor, ES - min ellipse separation

Company:	Synergy Resources	Local Co-ordinate Reference:	Well RBF 24-15D
Project:	SEC.15-T6N-R67W	TVD Reference:	WELL @ 4793.0ft (Original Well Elev)
Reference Site:	RBF 24-15D Pad Sec.15-T6N-R67W	MD Reference:	WELL @ 4793.0ft (Original Well Elev)
Site Error:	0.0ft	North Reference:	True
Reference Well:	RBF 24-15D	Survey Calculation Method:	Minimum Curvature
Well Error:	0.0ft	Output errors are at	2.00 sigma
Reference Wellbore	Wellbore #1	Database:	Landmark
Reference Design:	Plan #2 (7-06-10)	Offset TVD Reference:	Offset Datum

Offset Design RBF 24-15D Pad Sec.15-T6N-R67W - RBF 14-15D - Wellbore #1 - Plan #1 (5-8-10)												Offset Site Error:	0.0 ft
Survey Program: 0-MWD												Offset Well Error:	0.0 ft
Reference	Offset	Semi Major Axis		Distance									
Measured Depth (ft)	Vertical Depth (ft)	Measured Depth (ft)	Vertical Depth (ft)	Reference (ft)	Offset (ft)	Highside Toolface (°)	Offset Wellbore Centre +N/-S (ft)	+E/-W (ft)	Between Centres (ft)	Between Ellipses (ft)	Minimum Separation (ft)	Separation Factor	Warning
7,500.0	7,392.1	7,519.6	7,393.1	23.5	25.0	-90.99	-565.0	-830.0	1,556.4	1,517.1	39.35	39.555	
7,600.0	7,492.1	7,619.6	7,493.1	23.6	25.2	-90.99	-565.0	-830.0	1,556.4	1,516.8	39.68	39.227	
7,638.3	7,530.3	7,657.9	7,531.3	23.7	25.2	-90.99	-565.0	-830.0	1,556.4	1,516.6	39.80	39.102	
7,657.9	7,550.0	7,676.6	7,550.0	23.7	25.2	-90.99	-565.0	-830.0	1,556.4	1,516.6	39.87	39.040	

Reference Depths are relative to WELL @ 4793.0ft (Original Well Elev) Coordinates are relative to: RBF 24-15D
Offset Depths are relative to Offset Datum Coordinate System is US State Plane 1983, Colorado Northern Zone
Central Meridian is 105° 30' 0.000 W ° Grid Convergence at Surface is: 0.40°



Company:	Synergy Resources	Local Co-ordinate Reference:	Well RBF 24-15D
Project:	SEC.15-T6N-R67W	TVD Reference:	WELL @ 4793.0ft (Original Well Elev)
Reference Site:	RBF 24-15D Pad Sec.15-T6N-R67W	MD Reference:	WELL @ 4793.0ft (Original Well Elev)
Site Error:	0.0ft	North Reference:	True
Reference Well:	RBF 24-15D	Survey Calculation Method:	Minimum Curvature
Well Error:	0.0ft	Output errors are at	2.00 sigma
Reference Wellbore	Wellbore #1	Database:	Landmark
Reference Design:	Plan #2 (7-06-10)	Offset TVD Reference:	Offset Datum

Reference Depths are relative to WELL @ 4793.0ft (Original Well Elev) Coordinates are relative to: RBF 24-15D
 Offset Depths are relative to Offset Datum Coordinate System is US State Plane 1983, Colorado Northern Zone
 Central Meridian is 105° 30' 0.000 W ° Grid Convergence at Surface is: 0.40°

