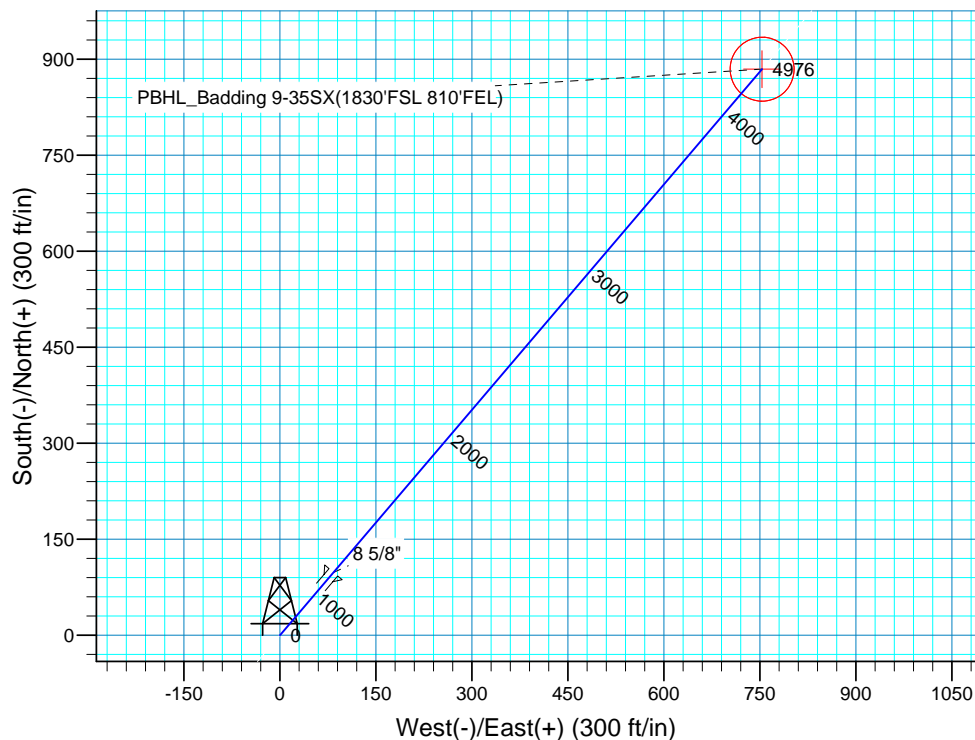
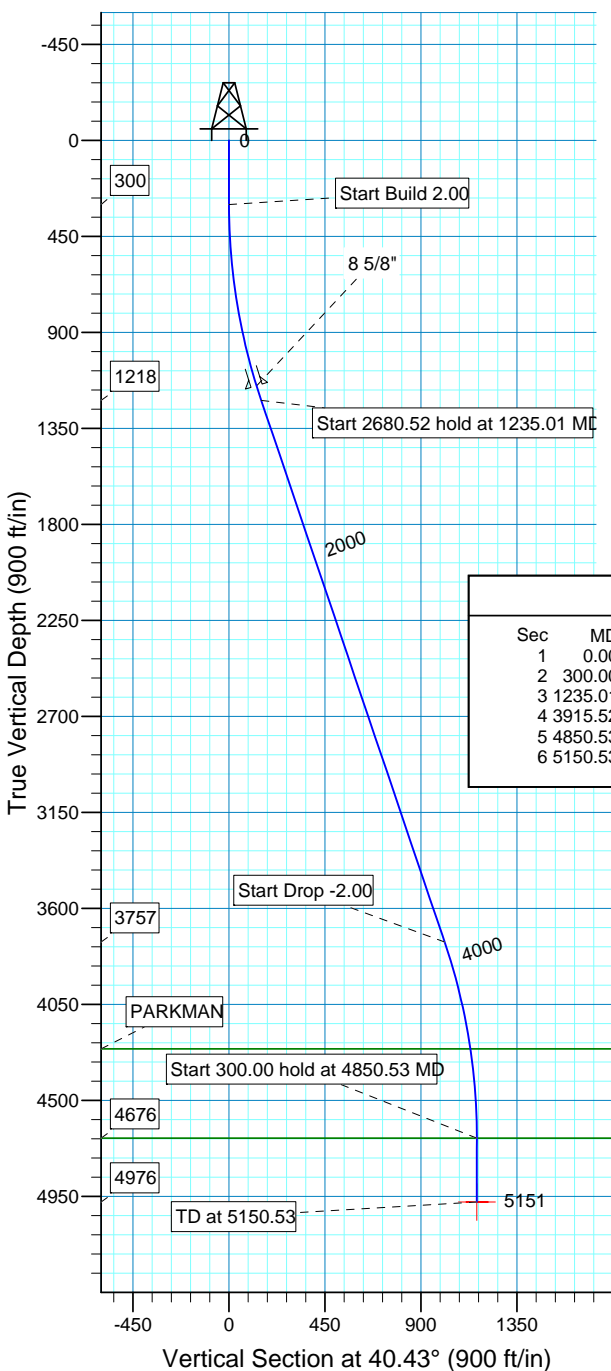


WELL DETAILS: P_Badding 9-35SX						
GL 5086' & RKB 15' @ 5101.00ft (ASSUMED) 5086.00						
+N/-S	+E/-W	Northing	Easting	Latitude	Longitude	
0.00	0.00	1276531.97	3212512.08	40° 5' 23.903 N	104° 44' 25.559 W	

T M Azimuths to True North
 Magnetic North: 8.92°

Magnetic Field
 Strength: 53094.2snT
 Dip Angle: 66.85°
 Date: 06/16/2010
 Model: IGRF200510

WELLBORE TARGET DETAILS (MAP CO-ORDINATES AND LAT/LONG)								
Name	TVD	+N/-S	+E/-W	Northing	Easting	Latitude	Longitude	Shape
PBHL	4976.00	884.48	753.43	1277422.87	3213257.91	40° 5' 32.644 N	104° 44' 15.864 W	Circle (Radius: 50.00)



SECTION DETAILS										
Sec	MD	Inc	Azi	TVD	+N/-S	+E/-W	DLeg	TFace	VSec	Target
1	0.00	0.00	0.00	0.00	0.00	0.00	0.00	0.00	0.00	
2	300.00	0.00	0.00	300.00	0.00	0.00	0.00	0.00	0.00	
3	1235.01	18.70	40.43	1218.49	115.13	98.07	2.00	40.43	151.23	
4	3915.52	18.70	40.43	3757.51	769.35	655.36	0.00	0.00	1010.65	
5	4850.53	0.00	0.00	4676.00	884.48	753.43	2.00	180.00	1161.88	
6	5150.53	0.00	0.00	4976.00	884.48	753.43	0.00	0.00	1161.88	PBHL_Badding 9-35SX(1830'FSL 810'FEL)

FORMATION TOP DETAILS		
TVDPath	MDPath	Formation
4258.00	4431.03	PARKMAN
4676.00	4850.53	SUSSEX

PROJECT DETAILS: COLORADO NORTHERN ZONE - 83	
Geodetic System:	US State Plane 1983
Datum:	North American Datum 1983
Ellipsoid:	GRS 1980
Zone:	Colorado Northern Zone
Location:	SEC 35 T2N R66
System Datum:	Mean Sea Level
Local North:	No north reference data is available



Scientific Drilling
Rocky Mountain Operations

US ROCKIES REGION PLANNING

COLORADO NORTHERN ZONE - 83

WELD_Badding 20-35 Pad

P_Badding 9-35SX

P_Badding 9-35SX

Plan: Plan #1 7-16-10 RHS

Standard Planning Report

18 July, 2010



Database:	EDM 2003.16 Single User Db	Local Co-ordinate Reference:	Well P_Badding 9-35SX
Company:	US ROCKIES REGION PLANNING	TVD Reference:	GL 5086' & RKB 15' @ 5101.00ft (ASSUMED)
Project:	COLORADO NORTHERN ZONE - 83	MD Reference:	GL 5086' & RKB 15' @ 5101.00ft (ASSUMED)
Site:	WELD_Badding 20-35 Pad	North Reference:	True
Well:	P_Badding 9-35SX	Survey Calculation Method:	Minimum Curvature
Wellbore:	P_Badding 9-35SX		
Design:	Plan #1 7-16-10 RHS		

Project	COLORADO NORTHERN ZONE - 83, KERR MCGEE OIL & GAS ONSHORE LP		
Map System:	US State Plane 1983	System Datum:	Mean Sea Level
Geo Datum:	North American Datum 1983		
Map Zone:	Colorado Northern Zone		

Site	WELD_Badding 20-35 Pad, SEC 35 T2N R66				
Site Position:		Northing:	1,276,531.97 ft	Latitude:	40° 5' 23.903 N
From:	Lat/Long	Easting:	3,212,512.08 ft	Longitude:	104° 44' 25.559 W
Position Uncertainty:	0.00 ft	Slot Radius:	in	Grid Convergence:	0.49 °

Well	P_Badding 9-35SX, 952' FSL 1565' FEL					
Well Position	+N/-S	0.00 ft	Northing:	1,276,531.97 ft	Latitude:	40° 5' 23.903 N
	+E/-W	0.00 ft	Easting:	3,212,512.08 ft	Longitude:	104° 44' 25.559 W
Position Uncertainty		0.00 ft	Wellhead Elevation:	ft	Ground Level:	5,086.00 ft

Wellbore	P_Badding 9-35SX				
-----------------	------------------	--	--	--	--

Magnetics	Model Name	Sample Date	Declination (°)	Dip Angle (°)	Field Strength (nT)
	IGRF200510	06/16/10	8.92	66.85	53,094

Design	Plan #1 7-16-10 RHS				
---------------	---------------------	--	--	--	--

Audit Notes:					
Version:	Phase:	PLAN	Tie On Depth:	0.00	
Vertical Section:	Depth From (TVD) (ft)	+N/-S (ft)	+E/-W (ft)	Direction (°)	
	0.00	0.00	0.00	40.43	

Plan Sections										
Measured Depth (ft)	Inclination (°)	Azimuth (°)	Vertical Depth (ft)	+N/-S (ft)	+E/-W (ft)	Dogleg Rate (°/100ft)	Build Rate (°/100ft)	Turn Rate (°/100ft)	TFO (°)	Target
0.00	0.00	0.00	0.00	0.00	0.00	0.00	0.00	0.00	0.00	
300.00	0.00	0.00	300.00	0.00	0.00	0.00	0.00	0.00	0.00	
1,235.01	18.70	40.43	1,218.49	115.13	98.07	2.00	2.00	0.00	40.43	
3,915.52	18.70	40.43	3,757.51	769.35	655.36	0.00	0.00	0.00	0.00	
4,850.53	0.00	0.00	4,676.00	884.48	753.43	2.00	-2.00	0.00	180.00	
5,150.53	0.00	0.00	4,976.00	884.48	753.43	0.00	0.00	0.00	0.00	PBHL_Badding 9-3

Database:	EDM 2003.16 Single User Db	Local Co-ordinate Reference:	Well P_Badding 9-35SX
Company:	US ROCKIES REGION PLANNING	TVD Reference:	GL 5086' & RKB 15' @ 5101.00ft (ASSUMED)
Project:	COLORADO NORTHERN ZONE - 83	MD Reference:	GL 5086' & RKB 15' @ 5101.00ft (ASSUMED)
Site:	WELD_Badding 20-35 Pad	North Reference:	True
Well:	P_Badding 9-35SX	Survey Calculation Method:	Minimum Curvature
Wellbore:	P_Badding 9-35SX		
Design:	Plan #1 7-16-10 RHS		

Planned Survey

Measured Depth (ft)	Inclination (°)	Azimuth (°)	Vertical Depth (ft)	+N/-S (ft)	+E/-W (ft)	Vertical Section (ft)	Dogleg Rate (°/100ft)	Build Rate (°/100ft)	Turn Rate (°/100ft)
0.00	0.00	0.00	0.00	0.00	0.00	0.00	0.00	0.00	0.00
100.00	0.00	0.00	100.00	0.00	0.00	0.00	0.00	0.00	0.00
200.00	0.00	0.00	200.00	0.00	0.00	0.00	0.00	0.00	0.00
300.00	0.00	0.00	300.00	0.00	0.00	0.00	0.00	0.00	0.00
Start Build 2.00									
400.00	2.00	40.43	399.98	1.33	1.13	1.75	2.00	2.00	0.00
500.00	4.00	40.43	499.84	5.31	4.53	6.98	2.00	2.00	0.00
600.00	6.00	40.43	599.45	11.95	10.18	15.69	2.00	2.00	0.00
700.00	8.00	40.43	698.70	21.22	18.08	27.88	2.00	2.00	0.00
800.00	10.00	40.43	797.47	33.13	28.22	43.52	2.00	2.00	0.00
900.00	12.00	40.43	895.62	47.66	40.60	62.60	2.00	2.00	0.00
1,000.00	14.00	40.43	993.06	64.78	55.18	85.10	2.00	2.00	0.00
1,100.00	16.00	40.43	1,089.64	84.48	71.96	110.98	2.00	2.00	0.00
1,162.99	17.26	40.43	1,150.00	98.20	83.65	129.00	2.00	2.00	0.00
8 5/8"									
1,200.00	18.00	40.43	1,185.27	106.74	90.92	140.21	2.00	2.00	0.00
1,235.01	18.70	40.43	1,218.49	115.13	98.07	151.23	2.00	2.00	0.00
Start 2680.52 hold at 1235.01 MD									
1,300.00	18.70	40.43	1,280.06	130.99	111.58	172.07	0.00	0.00	0.00
1,400.00	18.70	40.43	1,374.78	155.40	132.37	204.13	0.00	0.00	0.00
1,500.00	18.70	40.43	1,469.50	179.80	153.16	236.19	0.00	0.00	0.00
1,600.00	18.70	40.43	1,564.22	204.21	173.95	268.26	0.00	0.00	0.00
1,700.00	18.70	40.43	1,658.94	228.62	194.74	300.32	0.00	0.00	0.00
1,800.00	18.70	40.43	1,753.66	253.02	215.53	332.38	0.00	0.00	0.00
1,900.00	18.70	40.43	1,848.38	277.43	236.33	364.44	0.00	0.00	0.00
2,000.00	18.70	40.43	1,943.10	301.84	257.12	396.50	0.00	0.00	0.00
2,100.00	18.70	40.43	2,037.82	326.24	277.91	428.56	0.00	0.00	0.00
2,200.00	18.70	40.43	2,132.55	350.65	298.70	460.62	0.00	0.00	0.00
2,300.00	18.70	40.43	2,227.27	375.06	319.49	492.69	0.00	0.00	0.00
2,400.00	18.70	40.43	2,321.99	399.46	340.28	524.75	0.00	0.00	0.00
2,500.00	18.70	40.43	2,416.71	423.87	361.07	556.81	0.00	0.00	0.00
2,600.00	18.70	40.43	2,511.43	448.28	381.86	588.87	0.00	0.00	0.00
2,700.00	18.70	40.43	2,606.15	472.68	402.65	620.93	0.00	0.00	0.00
2,800.00	18.70	40.43	2,700.87	497.09	423.44	652.99	0.00	0.00	0.00
2,900.00	18.70	40.43	2,795.59	521.50	444.23	685.05	0.00	0.00	0.00
3,000.00	18.70	40.43	2,890.31	545.90	465.02	717.12	0.00	0.00	0.00
3,100.00	18.70	40.43	2,985.03	570.31	485.81	749.18	0.00	0.00	0.00
3,200.00	18.70	40.43	3,079.76	594.72	506.60	781.24	0.00	0.00	0.00
3,300.00	18.70	40.43	3,174.48	619.12	527.39	813.30	0.00	0.00	0.00
3,400.00	18.70	40.43	3,269.20	643.53	548.18	845.36	0.00	0.00	0.00
3,500.00	18.70	40.43	3,363.92	667.94	568.97	877.42	0.00	0.00	0.00
3,600.00	18.70	40.43	3,458.64	692.34	589.77	909.49	0.00	0.00	0.00
3,700.00	18.70	40.43	3,553.36	716.75	610.56	941.55	0.00	0.00	0.00
3,800.00	18.70	40.43	3,648.08	741.16	631.35	973.61	0.00	0.00	0.00
3,900.00	18.70	40.43	3,742.80	765.56	652.14	1,005.67	0.00	0.00	0.00
3,915.52	18.70	40.43	3,757.51	769.35	655.36	1,010.65	0.00	0.00	0.00
Start Drop -2.00									
4,000.00	17.01	40.43	3,837.91	789.07	672.16	1,036.55	2.00	-2.00	0.00
4,100.00	15.01	40.43	3,934.03	810.07	690.04	1,064.13	2.00	-2.00	0.00
4,200.00	13.01	40.43	4,031.05	828.49	705.74	1,088.34	2.00	-2.00	0.00
4,300.00	11.01	40.43	4,128.85	844.33	719.24	1,109.14	2.00	-2.00	0.00
4,400.00	9.01	40.43	4,227.33	857.57	730.51	1,126.53	2.00	-2.00	0.00
4,431.03	8.39	40.43	4,258.00	861.14	733.55	1,131.22	2.00	-2.00	0.00

Database:	EDM 2003.16 Single User Db	Local Co-ordinate Reference:	Well P_Badding 9-35SX
Company:	US ROCKIES REGION PLANNING	TVD Reference:	GL 5086' & RKB 15' @ 5101.00ft (ASSUMED)
Project:	COLORADO NORTHERN ZONE - 83	MD Reference:	GL 5086' & RKB 15' @ 5101.00ft (ASSUMED)
Site:	WELD_Badding 20-35 Pad	North Reference:	True
Well:	P_Badding 9-35SX	Survey Calculation Method:	Minimum Curvature
Wellbore:	P_Badding 9-35SX		
Design:	Plan #1 7-16-10 RHS		

Planned Survey										
Measured Depth (ft)	Inclination (°)	Azimuth (°)	Vertical Depth (ft)	+N/-S (ft)	+E/-W (ft)	Vertical Section (ft)	Dogleg Rate (°/100ft)	Build Rate (°/100ft)	Turn Rate (°/100ft)	
PARKMAN										
4,500.00	7.01	40.43	4,326.35	868.17	739.54	1,140.46	2.00	-2.00	0.00	
4,600.00	5.01	40.43	4,425.79	876.15	746.33	1,150.93	2.00	-2.00	0.00	
4,700.00	3.01	40.43	4,525.54	881.47	750.87	1,157.93	2.00	-2.00	0.00	
4,800.00	1.01	40.43	4,625.47	884.14	753.14	1,161.43	2.00	-2.00	0.00	
4,850.53	0.00	0.00	4,676.00	884.48	753.43	1,161.88	2.00	-2.00	0.00	
Start 300.00 hold at 4850.53 MD - SUSSEX										
4,900.00	0.00	0.00	4,725.47	884.48	753.43	1,161.88	0.00	0.00	0.00	
5,000.00	0.00	0.00	4,825.47	884.48	753.43	1,161.88	0.00	0.00	0.00	
5,100.00	0.00	0.00	4,925.47	884.48	753.43	1,161.88	0.00	0.00	0.00	
5,150.53	0.00	0.00	4,976.00	884.48	753.43	1,161.88	0.00	0.00	0.00	
PBHL_Badding 9-35SX(1830'FSL 810'FEL)										

Targets										
Target Name	- hit/miss target	Dip Angle (°)	Dip Dir. (°)	TVD (ft)	+N/-S (ft)	+E/-W (ft)	Northing (ft)	Easting (ft)	Latitude	Longitude
PBHL_Badding 9-35S	- plan hits target center	0.00	0.00	4,976.00	884.48	753.43	1,277,422.87	3,213,257.91	40° 5' 32.644 N	104° 44' 15.864 W
	- Circle (radius 50.00)									

Casing Points						
Measured Depth (ft)	Vertical Depth (ft)	Name	Casing Diameter (in)	Hole Diameter (in)		
1,162.99	1,150.00	8 5/8"	8.62	11.00		

Formations						
Measured Depth (ft)	Vertical Depth (ft)	Name	Lithology	Dip (°)	Dip Direction (°)	
4,431.03	4,258.00	PARKMAN				
4,850.53	4,676.00	SUSSEX				

Plan Annotations					
Measured Depth (ft)	Vertical Depth (ft)	Local Coordinates		Comment	
		+N/-S (ft)	+E/-W (ft)		
300.00	300.00	0.00	0.00	Start Build 2.00	
1,235.01	1,218.49	115.13	98.07	Start 2680.52 hold at 1235.01 MD	
3,915.52	3,757.51	769.35	655.36	Start Drop -2.00	
4,850.53	4,676.00	884.48	753.43	Start 300.00 hold at 4850.53 MD	
5,150.53	4,976.00	884.48	753.43	TD at 5150.53	