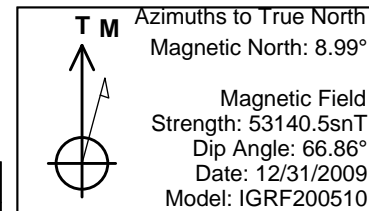
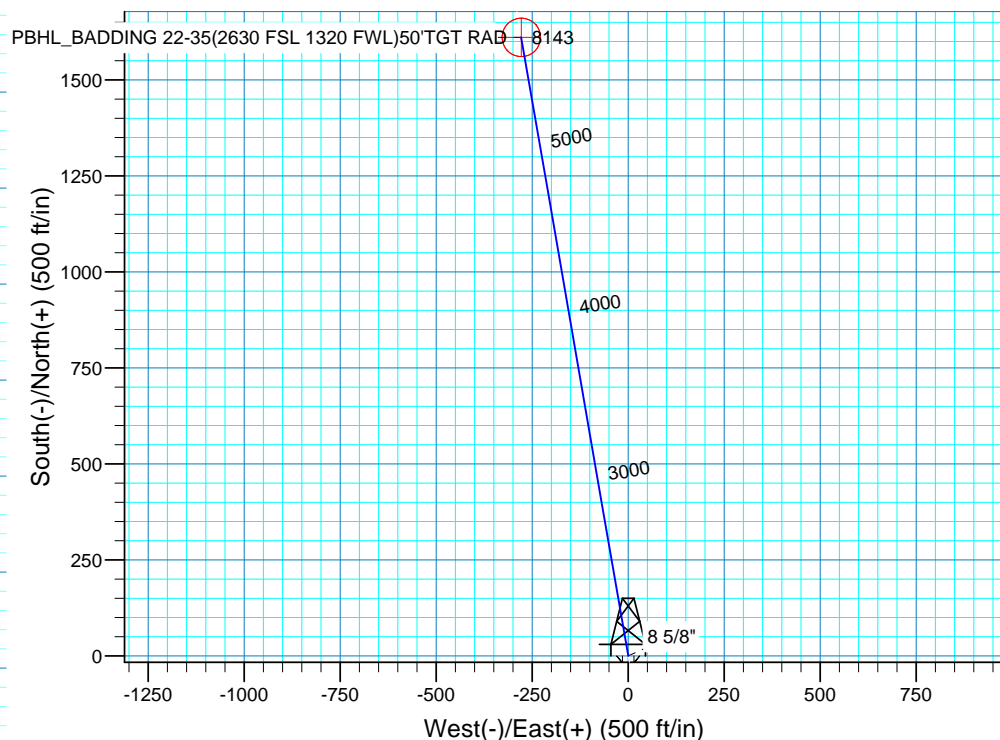
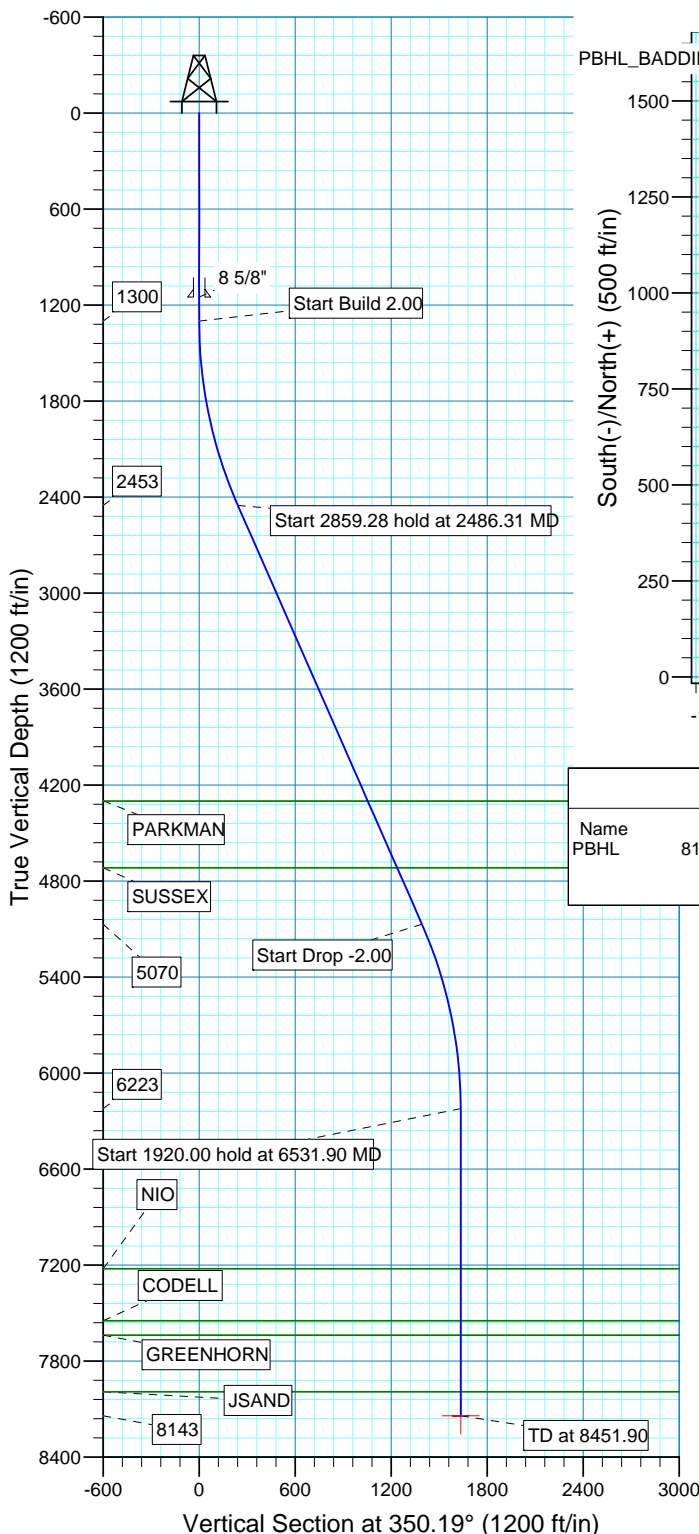


WELL DETAILS: P_BADDING 22-35					
WELL @ 5123.00ft (Original Well Elev) 5108.00					
+N/-S	+E/-W	Northing	Easting	Latitude	Longitude
0.00	0.00	1276562.31	3210387.91	40° 5' 24.382 N	104° 44' 52.886 W



SECTION DETAILS										
Sec	MD	Inc	Azi	TVD	+N/-S	+E/-W	DLeg	TFace	VSec	Target
1	0.00	0.00	0.00	0.00	0.00	0.00	0.00	0.00	0.00	
2	1300.00	0.00	0.00	1300.00	0.00	0.00	0.00	0.00	0.00	
3	2486.31	23.73	350.19	2452.69	238.60	-41.25	2.00	350.19	242.13	
4	5345.59	23.73	350.19	5070.31	1372.25	-237.25	0.00	0.00	1392.61	
5	6531.90	0.00	0.00	6223.00	1610.85	-278.51	2.00	180.00	1634.75	
6	8451.90	0.00	0.00	8143.00	1610.85	-278.51	0.00	0.00	1634.75	PBHL_BADDING 22-35(2630 FSL 1320 FWL)50°TGT RAD



WELLBORE TARGET DETAILS (MAP CO-ORDINATES AND LAT/LONG)									
Name	TVD	+N/-S	+E/-W	Northing	Easting	Latitude	Longitude	Shape	
PBHL	8143.00	1610.84	-278.37	1278170.73	3210095.89	40° 5' 40.301 N	104° 44' 56.468 W	Circle (Radius: 50.0	

FORMATION TOP DETAILS		
TVDPath	MDPath	Formation
4300.00	4504.17	PARKMAN
4718.00	4960.76	SUSSEX
7223.00	7531.90	NIO
7548.00	7856.90	CODELL
7638.00	7946.90	GREENHORN
7993.00	8301.90	JSAND

PROJECT DETAILS: COLORADO NORTHERN ZONE - 83	
Geodetic System:	US State Plane 1983
Datum:	North American Datum 1983
Ellipsoid:	GRS 1980
Zone:	Colorado Northern Zone
Location:	SECTION 35 T2N R66W
System Datum:	Mean Sea Level
Local North:	True

US ROCKIES REGION PLANNING

COLORADO NORTHERN ZONE - 83

WELD_BADDING 19-35 PAD

P_BADDING 22-35

P_BADDING 22-35

Plan: PLAN #1 7-19-10 RHS

Standard Planning Report

20 July, 2010

Database:	EDM 2003.16 Single User Db	Local Co-ordinate Reference:	Well P_BADDING 22-35
Company:	US ROCKIES REGION PLANNING	TVD Reference:	WELL @ 5123.00ft (Original Well Elev)
Project:	COLORADO NORTHERN ZONE - 83	MD Reference:	WELL @ 5123.00ft (Original Well Elev)
Site:	WELD_BADDING 19-35 PAD	North Reference:	True
Well:	P_BADDING 22-35	Survey Calculation Method:	Minimum Curvature
Wellbore:	P_BADDING 22-35		
Design:	PLAN #1 7-19-10 RHS		

Project	COLORADO NORTHERN ZONE - 83, KERR MCGEE OIL & GAS ONSHORE LP		
Map System:	US State Plane 1983	System Datum:	Mean Sea Level
Geo Datum:	North American Datum 1983		
Map Zone:	Colorado Northern Zone		

Site	WELD_BADDING 19-35 PAD, SECTION 35 T2N R66W		
Site Position:		Northing:	1,276,562.14 ft
From:	Lat/Long	Easting:	3,210,367.76 ft
Position Uncertainty:	0.00 ft	Slot Radius:	in
		Latitude:	40° 5' 24.382 N
		Longitude:	104° 44' 53.146 W
		Grid Convergence:	0.49 °

Well	P_BADDING 22-35, 1017 FSL 1597 FWL		
Well Position	+N/-S	0.00 ft	Northing: 1,276,562.31 ft
	+E/-W	0.00 ft	Easting: 3,210,387.91 ft
Position Uncertainty	0.00 ft	Wellhead Elevation:	ft
		Latitude:	40° 5' 24.382 N
		Longitude:	104° 44' 52.886 W
		Ground Level:	5,108.00 ft

Wellbore	P_BADDING 22-35				
Magnetics	Model Name	Sample Date	Declination (°)	Dip Angle (°)	Field Strength (nT)
	IGRF200510	12/31/2009	8.99	66.86	53,140

Design	PLAN #1 7-19-10 RHS			
Audit Notes:				
Version:	Phase:	PLAN	Tie On Depth:	0.00
Vertical Section:	Depth From (TVD) (ft)	+N/-S (ft)	+E/-W (ft)	Direction (°)
	0.00	0.00	0.00	350.19

Plan Sections										
Measured Depth (ft)	Inclination (°)	Azimuth (°)	Vertical Depth (ft)	+N/-S (ft)	+E/-W (ft)	Dogleg Rate (°/100ft)	Build Rate (°/100ft)	Turn Rate (°/100ft)	TFO (°)	Target
0.00	0.00	0.00	0.00	0.00	0.00	0.00	0.00	0.00	0.00	
1,300.00	0.00	0.00	1,300.00	0.00	0.00	0.00	0.00	0.00	0.00	
2,486.31	23.73	350.19	2,452.69	238.60	-41.25	2.00	2.00	0.00	350.19	
5,345.59	23.73	350.19	5,070.31	1,372.25	-237.25	0.00	0.00	0.00	0.00	
6,531.90	0.00	0.00	6,223.00	1,610.85	-278.51	2.00	-2.00	0.00	180.00	
8,451.90	0.00	0.00	8,143.00	1,610.85	-278.51	0.00	0.00	0.00	0.00	PBHL_BADDING 2

Database:	EDM 2003.16 Single User Db	Local Co-ordinate Reference:	Well P_BADDING 22-35
Company:	US ROCKIES REGION PLANNING	TVD Reference:	WELL @ 5123.00ft (Original Well Elev)
Project:	COLORADO NORTHERN ZONE - 83	MD Reference:	WELL @ 5123.00ft (Original Well Elev)
Site:	WELD_BADDING 19-35 PAD	North Reference:	True
Well:	P_BADDING 22-35	Survey Calculation Method:	Minimum Curvature
Wellbore:	P_BADDING 22-35		
Design:	PLAN #1 7-19-10 RHS		

Planned Survey

Measured Depth (ft)	Inclination (°)	Azimuth (°)	Vertical Depth (ft)	+N/-S (ft)	+E/-W (ft)	Vertical Section (ft)	Dogleg Rate (°/100ft)	Build Rate (°/100ft)	Turn Rate (°/100ft)
0.00	0.00	0.00	0.00	0.00	0.00	0.00	0.00	0.00	0.00
100.00	0.00	0.00	100.00	0.00	0.00	0.00	0.00	0.00	0.00
200.00	0.00	0.00	200.00	0.00	0.00	0.00	0.00	0.00	0.00
300.00	0.00	0.00	300.00	0.00	0.00	0.00	0.00	0.00	0.00
400.00	0.00	0.00	400.00	0.00	0.00	0.00	0.00	0.00	0.00
500.00	0.00	0.00	500.00	0.00	0.00	0.00	0.00	0.00	0.00
600.00	0.00	0.00	600.00	0.00	0.00	0.00	0.00	0.00	0.00
700.00	0.00	0.00	700.00	0.00	0.00	0.00	0.00	0.00	0.00
800.00	0.00	0.00	800.00	0.00	0.00	0.00	0.00	0.00	0.00
900.00	0.00	0.00	900.00	0.00	0.00	0.00	0.00	0.00	0.00
1,000.00	0.00	0.00	1,000.00	0.00	0.00	0.00	0.00	0.00	0.00
1,100.00	0.00	0.00	1,100.00	0.00	0.00	0.00	0.00	0.00	0.00
1,150.00	0.00	0.00	1,150.00	0.00	0.00	0.00	0.00	0.00	0.00
8 5/8"									
1,200.00	0.00	0.00	1,200.00	0.00	0.00	0.00	0.00	0.00	0.00
1,300.00	0.00	0.00	1,300.00	0.00	0.00	0.00	0.00	0.00	0.00
Start Build 2.00									
1,400.00	2.00	350.19	1,399.98	1.72	-0.30	1.75	2.00	2.00	0.00
1,500.00	4.00	350.19	1,499.84	6.88	-1.19	6.98	2.00	2.00	0.00
1,600.00	6.00	350.19	1,599.45	15.46	-2.67	15.69	2.00	2.00	0.00
1,700.00	8.00	350.19	1,698.70	27.47	-4.75	27.88	2.00	2.00	0.00
1,800.00	10.00	350.19	1,797.47	42.89	-7.41	43.52	2.00	2.00	0.00
1,900.00	12.00	350.19	1,895.62	61.69	-10.67	62.60	2.00	2.00	0.00
2,000.00	14.00	350.19	1,993.06	83.85	-14.50	85.10	2.00	2.00	0.00
2,100.00	16.00	350.19	2,089.64	109.35	-18.91	110.98	2.00	2.00	0.00
2,200.00	18.00	350.19	2,185.27	138.16	-23.89	140.21	2.00	2.00	0.00
2,300.00	20.00	350.19	2,279.82	170.24	-29.43	172.77	2.00	2.00	0.00
2,400.00	22.00	350.19	2,373.17	205.55	-35.54	208.60	2.00	2.00	0.00
2,486.31	23.73	350.19	2,452.69	238.60	-41.25	242.13	2.00	2.00	0.00
Start 2859.28 hold at 2486.31 MD									
2,500.00	23.73	350.19	2,465.23	244.02	-42.19	247.64	0.00	0.00	0.00
2,600.00	23.73	350.19	2,556.78	283.67	-49.05	287.88	0.00	0.00	0.00
2,700.00	23.73	350.19	2,648.32	323.32	-55.90	328.12	0.00	0.00	0.00
2,800.00	23.73	350.19	2,739.87	362.97	-62.76	368.35	0.00	0.00	0.00
2,900.00	23.73	350.19	2,831.42	402.62	-69.61	408.59	0.00	0.00	0.00
3,000.00	23.73	350.19	2,922.97	442.27	-76.47	448.83	0.00	0.00	0.00
3,100.00	23.73	350.19	3,014.52	481.91	-83.32	489.06	0.00	0.00	0.00
3,200.00	23.73	350.19	3,106.06	521.56	-90.18	529.30	0.00	0.00	0.00
3,300.00	23.73	350.19	3,197.61	561.21	-97.03	569.54	0.00	0.00	0.00
3,400.00	23.73	350.19	3,289.16	600.86	-103.88	609.77	0.00	0.00	0.00
3,500.00	23.73	350.19	3,380.71	640.51	-110.74	650.01	0.00	0.00	0.00
3,600.00	23.73	350.19	3,472.25	680.16	-117.59	690.25	0.00	0.00	0.00
3,700.00	23.73	350.19	3,563.80	719.80	-124.45	730.48	0.00	0.00	0.00
3,800.00	23.73	350.19	3,655.35	759.45	-131.30	770.72	0.00	0.00	0.00
3,900.00	23.73	350.19	3,746.90	799.10	-138.16	810.96	0.00	0.00	0.00
4,000.00	23.73	350.19	3,838.45	838.75	-145.01	851.19	0.00	0.00	0.00
4,100.00	23.73	350.19	3,929.99	878.40	-151.87	891.43	0.00	0.00	0.00
4,200.00	23.73	350.19	4,021.54	918.05	-158.72	931.67	0.00	0.00	0.00
4,300.00	23.73	350.19	4,113.09	957.69	-165.58	971.90	0.00	0.00	0.00
4,400.00	23.73	350.19	4,204.64	997.34	-172.43	1,012.14	0.00	0.00	0.00
4,500.00	23.73	350.19	4,296.19	1,036.99	-179.29	1,052.38	0.00	0.00	0.00
4,504.17	23.73	350.19	4,300.00	1,038.64	-179.58	1,054.05	0.00	0.00	0.00
PARKMAN									

Database:	EDM 2003.16 Single User Db	Local Co-ordinate Reference:	Well P_BADDING 22-35
Company:	US ROCKIES REGION PLANNING	TVD Reference:	WELL @ 5123.00ft (Original Well Elev)
Project:	COLORADO NORTHERN ZONE - 83	MD Reference:	WELL @ 5123.00ft (Original Well Elev)
Site:	WELD_BADDING 19-35 PAD	North Reference:	True
Well:	P_BADDING 22-35	Survey Calculation Method:	Minimum Curvature
Wellbore:	P_BADDING 22-35		
Design:	PLAN #1 7-19-10 RHS		

Planned Survey

Measured Depth (ft)	Inclination (°)	Azimuth (°)	Vertical Depth (ft)	+N/-S (ft)	+E/-W (ft)	Vertical Section (ft)	Dogleg Rate (°/100ft)	Build Rate (°/100ft)	Turn Rate (°/100ft)
4,600.00	23.73	350.19	4,387.73	1,076.64	-186.14	1,092.61	0.00	0.00	0.00
4,700.00	23.73	350.19	4,479.28	1,116.29	-193.00	1,132.85	0.00	0.00	0.00
4,800.00	23.73	350.19	4,570.83	1,155.94	-199.85	1,173.09	0.00	0.00	0.00
4,900.00	23.73	350.19	4,662.38	1,195.58	-206.71	1,213.32	0.00	0.00	0.00
4,960.76	23.73	350.19	4,718.00	1,219.67	-210.87	1,237.77	0.00	0.00	0.00
SUSSEX									
5,000.00	23.73	350.19	4,753.93	1,235.23	-213.56	1,253.56	0.00	0.00	0.00
5,100.00	23.73	350.19	4,845.47	1,274.88	-220.42	1,293.80	0.00	0.00	0.00
5,200.00	23.73	350.19	4,937.02	1,314.53	-227.27	1,334.03	0.00	0.00	0.00
5,300.00	23.73	350.19	5,028.57	1,354.18	-234.13	1,374.27	0.00	0.00	0.00
5,345.59	23.73	350.19	5,070.31	1,372.25	-237.25	1,392.61	0.00	0.00	0.00
Start Drop -2.00									
5,400.00	22.64	350.19	5,120.32	1,393.36	-240.90	1,414.03	2.00	-2.00	0.00
5,500.00	20.64	350.19	5,213.27	1,429.69	-247.19	1,450.90	2.00	-2.00	0.00
5,600.00	18.64	350.19	5,307.45	1,462.81	-252.91	1,484.51	2.00	-2.00	0.00
5,700.00	16.64	350.19	5,402.74	1,492.66	-258.07	1,514.81	2.00	-2.00	0.00
5,800.00	14.64	350.19	5,499.04	1,519.22	-262.66	1,541.76	2.00	-2.00	0.00
5,900.00	12.64	350.19	5,596.21	1,542.46	-266.68	1,565.34	2.00	-2.00	0.00
6,000.00	10.64	350.19	5,694.15	1,562.33	-270.12	1,585.51	2.00	-2.00	0.00
6,100.00	8.64	350.19	5,792.73	1,578.83	-272.97	1,602.25	2.00	-2.00	0.00
6,200.00	6.64	350.19	5,891.84	1,591.93	-275.23	1,615.54	2.00	-2.00	0.00
6,300.00	4.64	350.19	5,991.35	1,601.61	-276.91	1,625.37	2.00	-2.00	0.00
6,400.00	2.64	350.19	6,091.15	1,607.86	-277.99	1,631.71	2.00	-2.00	0.00
6,500.00	0.64	350.19	6,191.10	1,610.67	-278.48	1,634.57	2.00	-2.00	0.00
6,531.90	0.00	0.00	6,223.00	1,610.85	-278.51	1,634.75	2.00	-2.00	0.00
Start 1920.00 hold at 6531.90 MD									
6,600.00	0.00	0.00	6,291.10	1,610.85	-278.51	1,634.75	0.00	0.00	0.00
6,700.00	0.00	0.00	6,391.10	1,610.85	-278.51	1,634.75	0.00	0.00	0.00
6,800.00	0.00	0.00	6,491.10	1,610.85	-278.51	1,634.75	0.00	0.00	0.00
6,900.00	0.00	0.00	6,591.10	1,610.85	-278.51	1,634.75	0.00	0.00	0.00
7,000.00	0.00	0.00	6,691.10	1,610.85	-278.51	1,634.75	0.00	0.00	0.00
7,100.00	0.00	0.00	6,791.10	1,610.85	-278.51	1,634.75	0.00	0.00	0.00
7,200.00	0.00	0.00	6,891.10	1,610.85	-278.51	1,634.75	0.00	0.00	0.00
7,300.00	0.00	0.00	6,991.10	1,610.85	-278.51	1,634.75	0.00	0.00	0.00
7,400.00	0.00	0.00	7,091.10	1,610.85	-278.51	1,634.75	0.00	0.00	0.00
7,500.00	0.00	0.00	7,191.10	1,610.85	-278.51	1,634.75	0.00	0.00	0.00
7,531.90	0.00	0.00	7,223.00	1,610.85	-278.51	1,634.75	0.00	0.00	0.00
NIO									
7,600.00	0.00	0.00	7,291.10	1,610.85	-278.51	1,634.75	0.00	0.00	0.00
7,700.00	0.00	0.00	7,391.10	1,610.85	-278.51	1,634.75	0.00	0.00	0.00
7,800.00	0.00	0.00	7,491.10	1,610.85	-278.51	1,634.75	0.00	0.00	0.00
7,856.90	0.00	0.00	7,548.00	1,610.85	-278.51	1,634.75	0.00	0.00	0.00
CODELL									
7,900.00	0.00	0.00	7,591.10	1,610.85	-278.51	1,634.75	0.00	0.00	0.00
7,946.90	0.00	0.00	7,638.00	1,610.85	-278.51	1,634.75	0.00	0.00	0.00
GREENHORN									
8,000.00	0.00	0.00	7,691.10	1,610.85	-278.51	1,634.75	0.00	0.00	0.00
8,100.00	0.00	0.00	7,791.10	1,610.85	-278.51	1,634.75	0.00	0.00	0.00
8,200.00	0.00	0.00	7,891.10	1,610.85	-278.51	1,634.75	0.00	0.00	0.00
8,300.00	0.00	0.00	7,991.10	1,610.85	-278.51	1,634.75	0.00	0.00	0.00
8,301.90	0.00	0.00	7,993.00	1,610.85	-278.51	1,634.75	0.00	0.00	0.00
JSAND									
8,400.00	0.00	0.00	8,091.10	1,610.85	-278.51	1,634.75	0.00	0.00	0.00

Database:	EDM 2003.16 Single User Db	Local Co-ordinate Reference:	Well P_BADDING 22-35
Company:	US ROCKIES REGION PLANNING	TVD Reference:	WELL @ 5123.00ft (Original Well Elev)
Project:	COLORADO NORTHERN ZONE - 83	MD Reference:	WELL @ 5123.00ft (Original Well Elev)
Site:	WELD_BADDING 19-35 PAD	North Reference:	True
Well:	P_BADDING 22-35	Survey Calculation Method:	Minimum Curvature
Wellbore:	P_BADDING 22-35		
Design:	PLAN #1 7-19-10 RHS		

Planned Survey									
Measured Depth (ft)	Inclination (°)	Azimuth (°)	Vertical Depth (ft)	+N/-S (ft)	+E/-W (ft)	Vertical Section (ft)	Dogleg Rate (°/100ft)	Build Rate (°/100ft)	Turn Rate (°/100ft)
8,451.90	0.00	0.00	8,143.00	1,610.85	-278.51	1,634.75	0.00	0.00	0.00
PBHL_BADDING 22-35(2630 FSL 1320 FWL)50'TGT RAD									

Targets									
Target Name	- hit/miss target	Dip Angle (°)	Dip Dir. (°)	TVD (ft)	+N/-S (ft)	+E/-W (ft)	Northing (ft)	Easting (ft)	
	- Shape								Latitude Longitude
PBHL_BADDING 22-35	- plan hits target center	0.00	0.49	8,143.00	1,610.84	-278.37	1,278,170.73	3,210,095.89	40° 5' 40.301 N 104° 44' 56.468 W
	- Circle (radius 50.00)								

Casing Points					
Measured Depth (ft)	Vertical Depth (ft)	Name	Casing Diameter (in)	Hole Diameter (in)	
1,150.00	1,150.00	8 5/8"	8.620	11.000	

Formations						
Measured Depth (ft)	Vertical Depth (ft)	Name	Lithology	Dip (°)	Dip Direction (°)	
8,301.90	7,993.00	JSAND				
7,856.90	7,548.00	CODELL				
7,531.90	7,223.00	NIO				
4,504.17	4,300.00	PARKMAN				
7,946.90	7,638.00	GREENHORN				
4,960.76	4,718.00	SUSSEX				

Plan Annotations				
Measured Depth (ft)	Vertical Depth (ft)	+N/-S (ft)	+E/-W (ft)	Comment
1,300.00	1,300.00	0.00	0.00	Start Build 2.00
2,486.31	2,452.69	238.60	-41.25	Start 2859.28 hold at 2486.31 MD
5,345.59	5,070.31	1,372.25	-237.25	Start Drop -2.00
6,531.90	6,223.00	1,610.85	-278.51	Start 1920.00 hold at 6531.90 MD
8,451.90	8,143.00	1,610.85	-278.51	TD at 8451.90