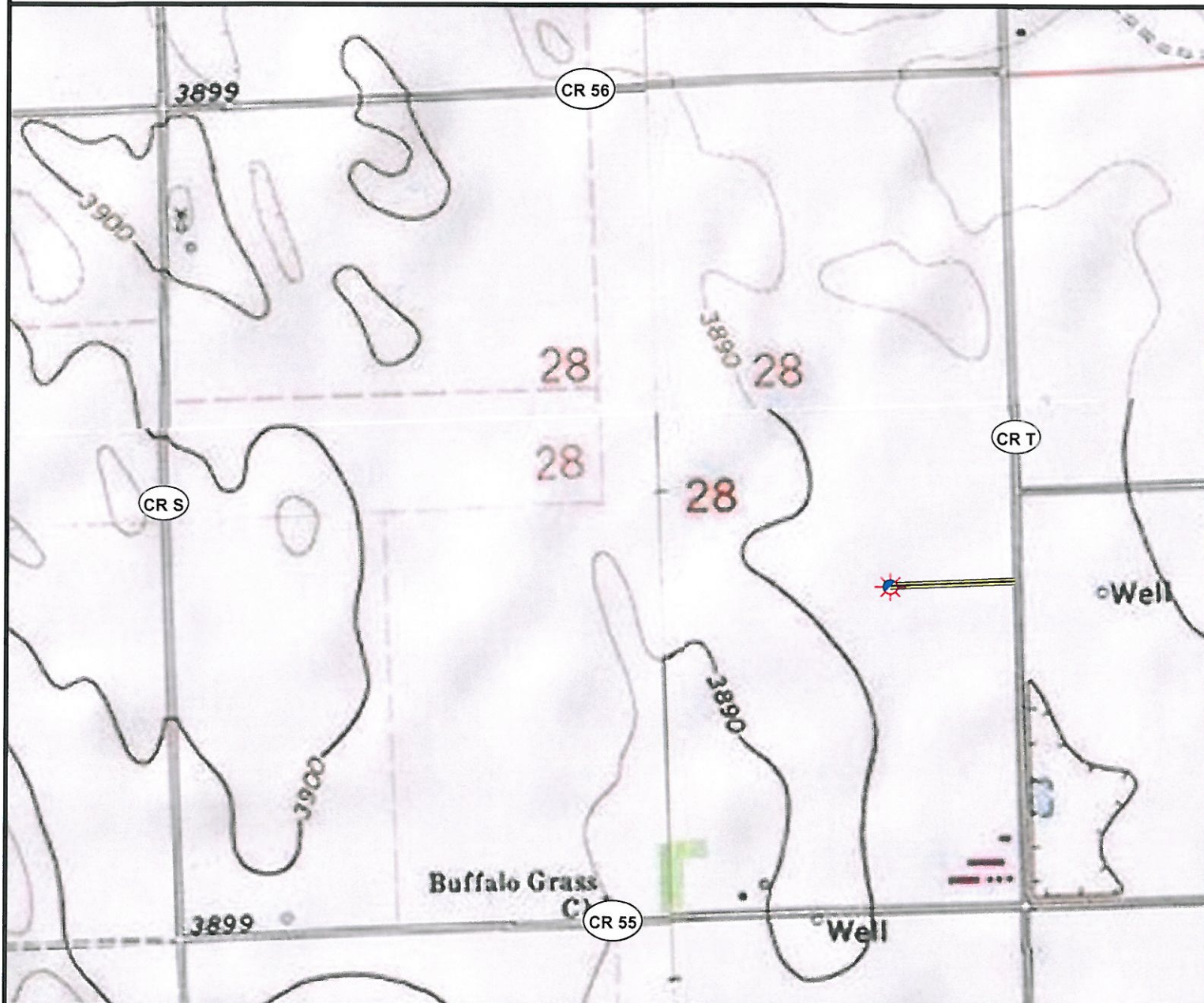


# Access Road Map



0 0.125 0.25 0.5 Miles

## Legend

- |                      |                       |
|----------------------|-----------------------|
| Proposed Well        | Building/Residence    |
| Existing Well        | Oil & Gas Equipment   |
| Water Well           | Water Body            |
| Pedestal             | Utility Box           |
| CattleGuard/Gate     | Railroad              |
| Bridge               | Fence                 |
| Disturbance Area     | Overhead Power Line   |
| 1000' Radius         | Pipeline              |
| Facilities Enclosure | Access Road           |
|                      | Ditch/Canal           |
|                      | Concrete Walled Ditch |

## Access Road Map

**CROSSLAND 43-28 5N46W**

**Surface Location: T5N R46W S28**

Field Date: 7/12/2010  
 Drawing Date: 7/18/2010  
 Drafter: DMM  
 Checked By: BHF

Topographic data courtesy of USGS

Prepared for:  
**AUGUSTUS ENERGY  
 PARTNERS, LLC**  
 P.O. Box 250  
 Wray, CO 80758



*Use our resources to find yours!*  
[www.petro-fs.com](http://www.petro-fs.com)

1801 W. 13th Ave Suite 207  
 Denver, CO 80204  
 (303) 928-7128  
 Rifle, CO 81650  
 (970) 625-4740