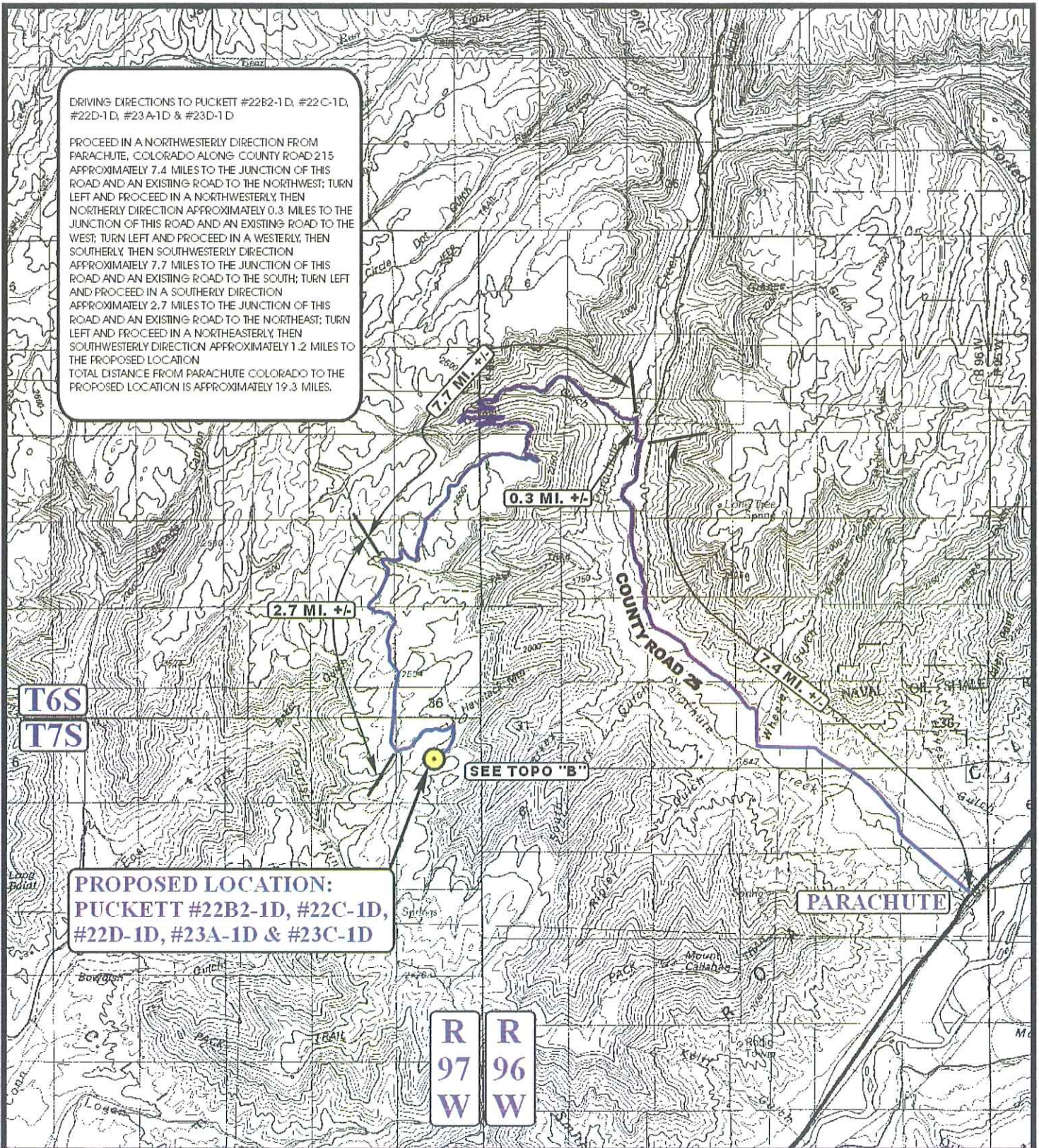


DRIVING DIRECTIONS TO PUCKETT #22B2-1D, #22C-1D,
#22D-1D, #23A-1D & #23C-1D

PROCEED IN A NORTHWESTERLY DIRECTION FROM
PARACHUTE, COLORADO ALONG COUNTY ROAD 215
APPROXIMATELY 7.4 MILES TO THE JUNCTION OF THIS
ROAD AND AN EXISTING ROAD TO THE NORTHWEST; TURN
LEFT AND PROCEED IN A NORTHWESTERLY, THEN
NORTHERLY DIRECTION APPROXIMATELY 0.3 MILES TO THE
JUNCTION OF THIS ROAD AND AN EXISTING ROAD TO THE
WEST; TURN LEFT AND PROCEED IN A WESTERLY, THEN
SOUTHERLY, THEN SOUTHWESTERLY DIRECTION
APPROXIMATELY 7.7 MILES TO THE JUNCTION OF THIS
ROAD AND AN EXISTING ROAD TO THE SOUTH; TURN LEFT
AND PROCEED IN A SOUTHERLY DIRECTION
APPROXIMATELY 2.7 MILES TO THE JUNCTION OF THIS
ROAD AND AN EXISTING ROAD TO THE NORTHEAST; TURN
LEFT AND PROCEED IN A NORTHEASTERLY, THEN
SOUTHWESTERLY DIRECTION APPROXIMATELY 1.2 MILES TO
THE PROPOSED LOCATION
TOTAL DISTANCE FROM PARACHUTE COLORADO TO THE
PROPOSED LOCATION IS APPROXIMATELY 19.3 MILES.



LEGEND:

PROPOSED LOCATION



Uintah Engineering & Land Surveying
85 South 200 East Vernal, Utah 84078
(435) 789-1017 * FAX (435) 789-1813



PETROLEUM DEVELOPMENT CORP.

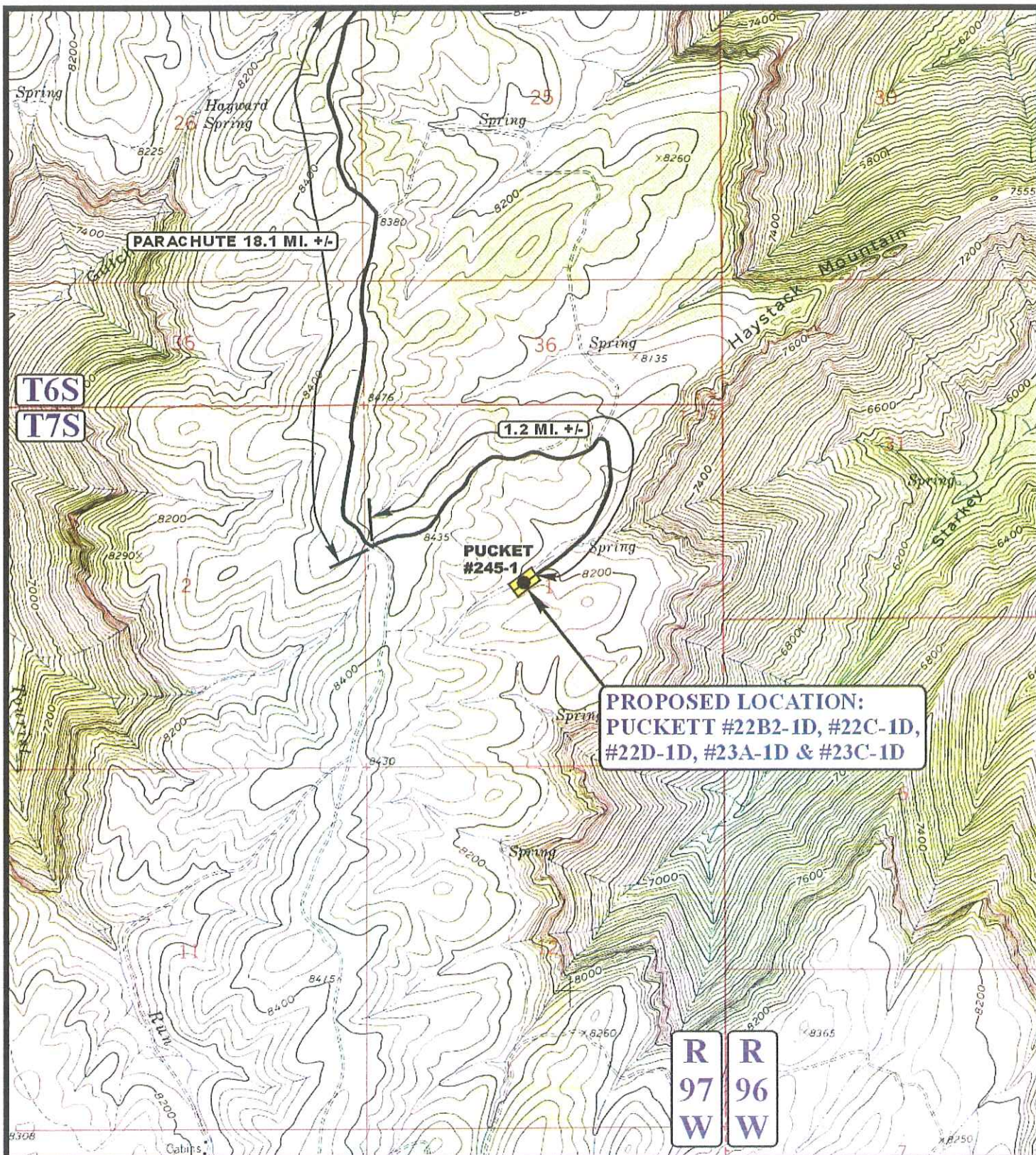
PUCKETT #22B2-1D, #22C-1D,
#22D-1D, #23A-1D & #23C-1D
SECTION 1, T7S, R97W, 6th P.M.
TRACT 63

ACCESS ROAD
MAP

10 30 09
MONTH DAY YEAR

SCALE: 1:100,000 DRAWN BY: J.H. REVISED: 04-14-10





LEGEND:

EXISTING ROAD



PETROLEUM DEVELOPMENT CORP.

PUCKETT #22B2-1D, #22C-1D,
#22D-1D, #23A-1D & #23C-1D
SECTION 1, T7S, R97W, 6th P.M.
TRACT 63



Uintah Engineering & Land Surveying
85 South 200 East Vernal, Utah 84078
(435) 789-1017 * FAX (435) 789-1813

ACCESS ROAD
MAP

10 30 09
MONTH DAY YEAR

B
TOPO

SCALE: 1" = 2000' DRAWN BY: J.H. REVISED: 04-14-10