

PETROLEUM DEVELOPMENT CORP.
PUCKETT #22B2-1D, #22C-1D, #22D-1D, #23A-1D & #23C-1D
LOCATED IN GARFIELD COUNTY, COLORADO
SECTION 1, T7S, R97W, 6th P.M.



PHOTO: VIEW FROM CORNER #5 TO LOCATION STAKE

CAMERA ANGLE: NORTHWESTERLY

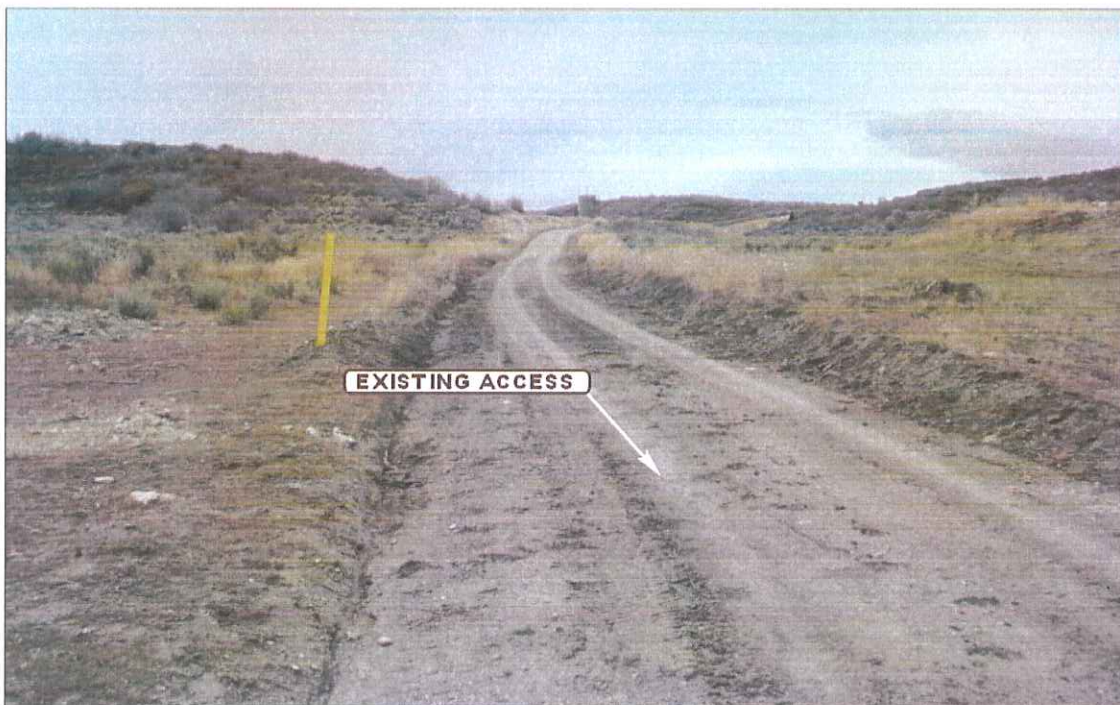


PHOTO: VIEW OF EXISTING ACCESS

CAMERA ANGLE: SOUTHWESTERLY



- Since 1964 -

UELS Uintah Engineering & Land Surveying
85 South 200 East Vernal, Utah 84078
(435) 789-1017 * FAX (435) 789-1813

LOCATION PHOTOS

10 **30** **09**
MONTH DAY YEAR

TAKEN BY: B.J.

DRAWN BY: J.H.

REVISED: 04-14-10

PHOTO

P1

PETROLEUM DEVELOPMENT CORP.
PUCKETT #22B2-1D, #22C-1D, #22D-1D, #23A-1D & #23C-1D
LOCATED IN GARFIELD COUNTY, COLORADO
SECTION 1, T7S, R97W, 6th P.M.

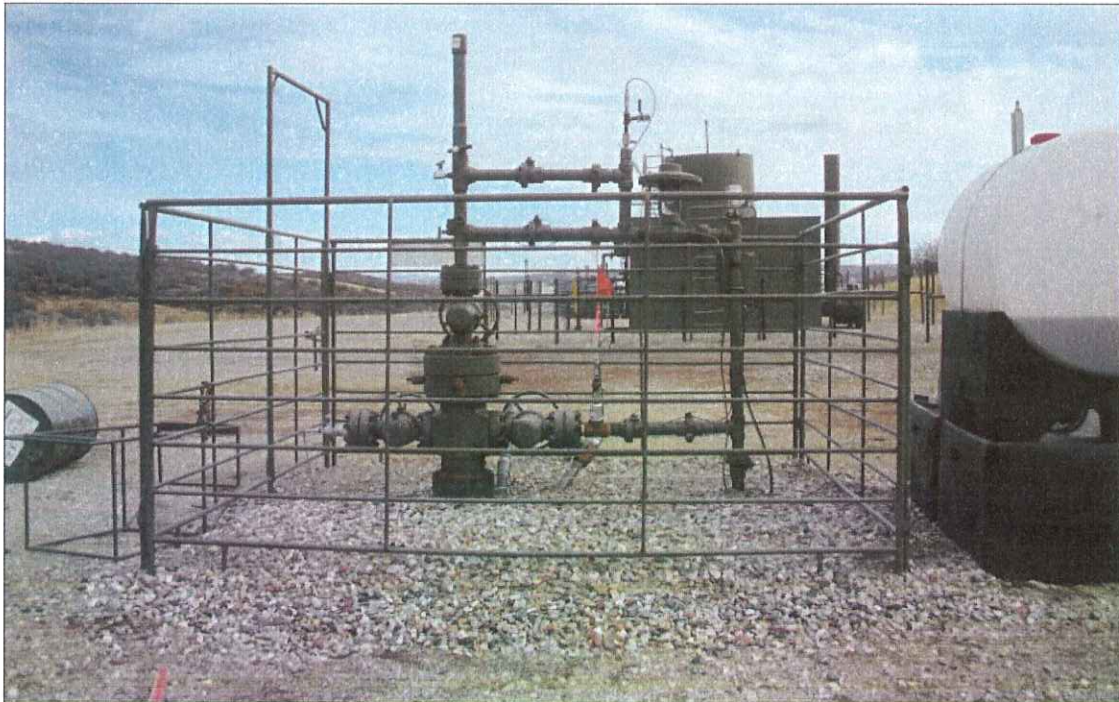


PHOTO: VIEW OF LOCATION STAKES

CAMERA ANGLE: NORTHERLY



PHOTO: VIEW OF LOCATION STAKES

CAMERA ANGLE: EASTERLY



Uintah Engineering & Land Surveying
85 South 200 East Vernal, Utah 84078
(435) 789-1017 * FAX (435) 789-1813

LOCATION PHOTOS

10 30 09
MONTH DAY YEAR

TAKEN BY: B.J.

DRAWN BY: J.H.

REVISED: 04-14-10

PHOTO

P2

PETROLEUM DEVELOPMENT CORP.
PUCKETT #22B2-1D, #22C-1D, #22D-1D, #23A-1D & #23C-1D
LOCATED IN GARFIELD COUNTY, COLORADO
SECTION 1, T7S, R97W, 6th P.M.



PHOTO: VIEW OF LOCATION STAKES

CAMERA ANGLE: SOUTHERLY



PHOTO: VIEW OF LOCATION STAKES

CAMERA ANGLE: WESTERLY



- Since 1964 -

**U
E
L
S**

Uintah Engineering & Land Surveying

85 South 200 East Vernal, Utah 84078
(435) 789-1017 * FAX (435) 789-1813

LOCATION PHOTOS

10 **30** **09**
MONTH DAY YEAR

TAKEN BY: B.J.

DRAWN BY: J.H.

REVISED: 04-14-10

PHOTO

P3