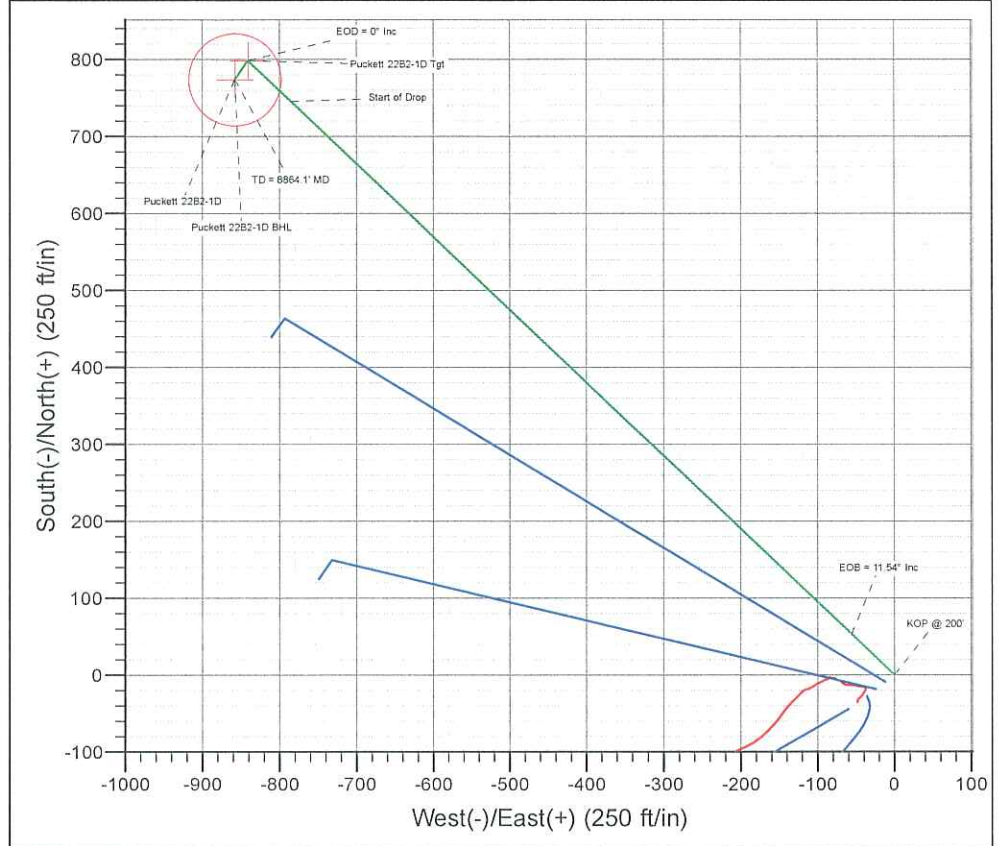
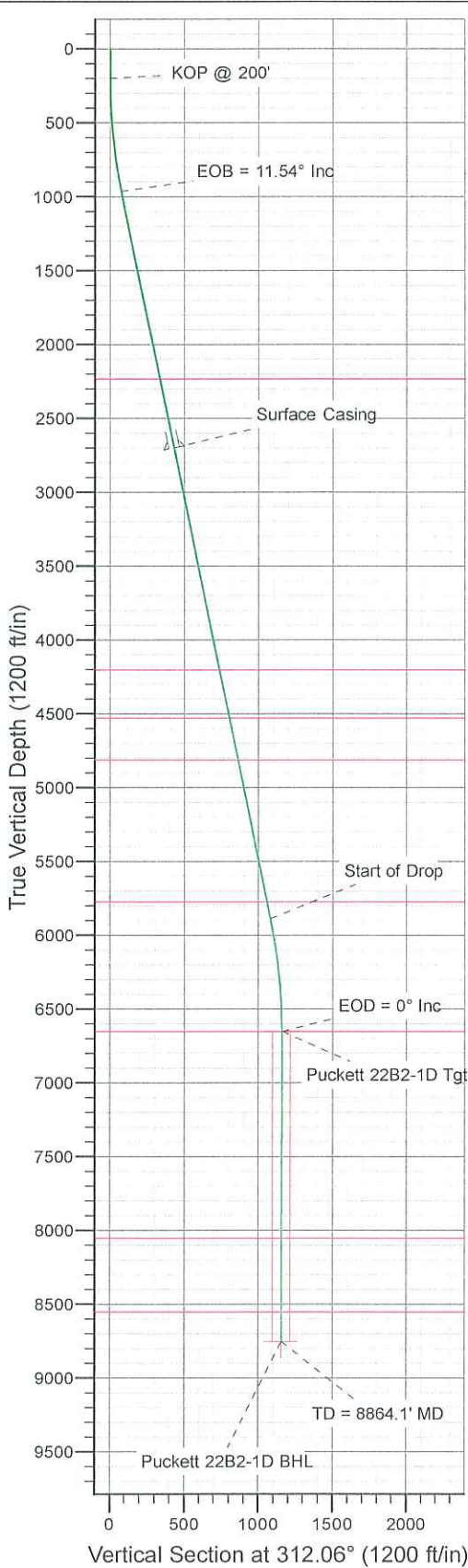




Azimuths to True North  
 Magnetic North: 10.55°  
 Magnetic Field  
 Strength: 52292.5nT  
 Dip Angle: 65.72°  
 Date: 2010/06/21  
 Model: IGRF2010-14

WELL DETAILS: Puckett 22B2-1D

Ground Level: 8218.0  
 Easting 2246556.85  
 Latitude 39.474736  
 Longitude -108.169464  
 Slot



ANNOTATIONS

TVD	MD	Annotation
200.0	200.0	KOP @ 200'
963.9	969.1	EOB = 11.54° Inc
5888.1	5994.8	Start of Drop
6652.0	6763.9	EOD = 0° Inc
8752.0	8864.1	TD = 8864.1' MD

FORMATION TOP DETAILS

TVDPath	MDPath	Formation
2232.0	2263.3	Wasatch
4202.0	4274.0	Wasatch "G" Sand
4527.0	4605.7	Fort Union
4812.0	4896.5	Base Fort Union
5772.0	5876.3	Mesaverde/Williams Fk
6652.0	6763.9	Top Gas Cell
8052.0	8164.1	Cameo
8552.0	8664.1	Rollins

ON DETAILS

Sec	MD	Inc	Azi	TVD	+N/-S	+E/-W	DLeg	TFace	VSec	Target
1	0.0	0.00	0.00	0.0	0.0	0.0	0.00	0.00	0.0	
2	200.0	0.00	0.00	200.0	0.0	0.0	0.00	0.00	0.0	
3	969.1	11.54	313.53	963.9	53.2	-55.9	1.50	313.53	77.1	
4	5994.8	11.54	313.53	5888.1	745.4	-784.7	0.00	0.00	1081.9	
5	6763.9	0.00	0.00	6652.0	798.6	-840.6	1.50	180.00	1159.1	Puckett 22B2-1D Tgt
6	7122.0	0.90	215.06	7010.0	796.3	-842.2	0.25	215.06	1158.7	
7	8864.1	0.90	215.06	8752.0	774.0	-857.8	0.00	0.00	1155.4	Puckett 22B2-1D BHL

WELLBORE TARGET DETAILS (LAT/LONG)

Name	TVD	+N/-S	+E/-W	Latitude	Longitude	Shape
Puckett 22B2-1D Tgt	6652.0	798.6	-840.6	39.476928	-108.172442	Point
Puckett 22B2-1D BHL	8752.0	774.0	-857.8	39.476861	-108.172503	Circle (Radius: 60.0)

CASING DETAILS

TVD	MD	Name	Size
2700.0	2741.0	Surface Casing	

Plan: Plan #2 (Puckett 22B2-1D/DD)

Created By: Jon Schweigert Date: 9:28, June 22 2010  
 Checked: \_\_\_\_\_ Date: \_\_\_\_\_  
 Reviewed: \_\_\_\_\_ Date: \_\_\_\_\_  
 Approved: \_\_\_\_\_ Date: \_\_\_\_\_



<b>Database:</b>	RMR1 Database	<b>Local Co-ordinate Reference:</b>	Well Puckett 22B2-1D
<b>Company:</b>	Petroleum Development Corp.	<b>TVD Reference:</b>	Puckett 22B2-1D @ 8242.0ft (H&P 318)
<b>Project:</b>	Mesa	<b>MD Reference:</b>	Puckett 22B2-1D @ 8242.0ft (H&P 318)
<b>Site:</b>	SENW Sec 1-T7S-R97W	<b>North Reference:</b>	True
<b>Well:</b>	Puckett 22B2-1D	<b>Survey Calculation Method:</b>	Minimum Curvature
<b>Wellbore:</b>	DD		
<b>Design:</b>	Plan #2		

<b>Project</b>	Mesa		
<b>Map System:</b>	US State Plane 1983	<b>System Datum:</b>	Mean Sea Level
<b>Geo Datum:</b>	North American Datum 1983		
<b>Map Zone:</b>	Colorado Central Zone		

<b>Site</b>	SENW Sec 1-T7S-R97W				
<b>Site Position:</b>		<b>Northing:</b>	1,608,829.52 ft	<b>Latitude:</b>	39.474614
<b>From:</b>	Lat/Long	<b>Easting:</b>	2,246,495.22 ft	<b>Longitude:</b>	-108.169678
<b>Position Uncertainty:</b>	0.0 ft	<b>Slot Radius:</b>		<b>Grid Convergence:</b>	-1.68 °

<b>Well</b>	Puckett 22B2-1D					
<b>Well Position</b>	<b>+N/-S</b>	44.5 ft	<b>Northing:</b>	1,608,872.19 ft	<b>Latitude:</b>	39.474736
	<b>+E/-W</b>	60.3 ft	<b>Easting:</b>	2,246,556.85 ft	<b>Longitude:</b>	-108.169464
<b>Position Uncertainty</b>		0.0 ft	<b>Wellhead Elevation:</b>		<b>Ground Level:</b>	8,218.0 ft

<b>Wellbore</b>	DD				
<b>Magnetics</b>	<b>Model Name</b>	<b>Sample Date</b>	<b>Declination (°)</b>	<b>Dip Angle (°)</b>	<b>Field Strength (nT)</b>
	IGRF2010-14	2010/06/21	10.55	65.72	52,293

<b>Design</b>	Plan #2			
<b>Audit Notes:</b>				
<b>Version:</b>	<b>Phase:</b>	PROTOTYPE	<b>Tie On Depth:</b>	0.0
<b>Vertical Section:</b>	<b>Depth From (TVD) (ft)</b>	<b>+N/-S (ft)</b>	<b>+E/-W (ft)</b>	<b>Direction (°)</b>
	0.0	0.0	0.0	312.06

Plan Sections										
Measured Depth (ft)	Inclination (°)	Azimuth (°)	Vertical Depth (ft)	+N/-S (ft)	+E/-W (ft)	Dogleg Rate (°/100ft)	Build Rate (°/100ft)	Turn Rate (°/100ft)	TFO (°)	Target
0.0	0.00	0.00	0.0	0.0	0.0	0.00	0.00	0.00	0.00	
200.0	0.00	0.00	200.0	0.0	0.0	0.00	0.00	0.00	0.00	
969.1	11.54	313.53	963.9	53.2	-55.9	1.50	1.50	0.00	313.53	
5,994.8	11.54	313.53	5,888.1	745.4	-784.7	0.00	0.00	0.00	0.00	
6,763.9	0.00	0.00	6,652.0	798.6	-840.6	1.50	-1.50	0.00	180.00	Puckett 22B2-1D Tgt
7,122.0	0.90	215.06	7,010.0	796.3	-842.2	0.25	0.25	-40.48	215.06	
8,864.1	0.90	215.06	8,752.0	774.0	-857.8	0.00	0.00	0.00	0.00	Puckett 22B2-1D BHL

<b>Database:</b>	RMR1 Database	<b>Local Co-ordinate Reference:</b>	Well Puckett 22B2-1D
<b>Company:</b>	Petroleum Development Corp.	<b>TVD Reference:</b>	Puckett 22B2-1D @ 8242.0ft (H&P 318)
<b>Project:</b>	Mesa	<b>MD Reference:</b>	Puckett 22B2-1D @ 8242.0ft (H&P 318)
<b>Site:</b>	SENW Sec 1-T7S-R97W	<b>North Reference:</b>	True
<b>Well:</b>	Puckett 22B2-1D	<b>Survey Calculation Method:</b>	Minimum Curvature
<b>Wellbore:</b>	DD		
<b>Design:</b>	Plan #2		

**Planned Survey**

Measured Depth (ft)	Inclination (°)	Azimuth (°)	Vertical Depth (ft)	Subsea Depth (ft)	+N/-S (ft)	+E/-W (ft)	Vertical Section (ft)	Dogleg Rate (°/100ft)	Build Rate (°/100ft)	Turn Rate (°/100ft)
0.0	0.00	0.00	0.0	-8,242.0	0.0	0.0	0.0	0.00	0.00	0.00
100.0	0.00	0.00	100.0	-8,142.0	0.0	0.0	0.0	0.00	0.00	0.00
<b>KOP @ 200'</b>										
200.0	0.00	0.00	200.0	-8,042.0	0.0	0.0	0.0	0.00	0.00	0.00
300.0	1.50	313.53	300.0	-7,942.0	0.9	-0.9	1.3	1.50	1.50	0.00
400.0	3.00	313.53	399.9	-7,842.1	3.6	-3.8	5.2	1.50	1.50	0.00
500.0	4.50	313.53	499.7	-7,742.3	8.1	-8.5	11.8	1.50	1.50	0.00
600.0	6.00	313.53	599.3	-7,642.7	14.4	-15.2	20.9	1.50	1.50	0.00
700.0	7.50	313.53	698.6	-7,543.4	22.5	-23.7	32.7	1.50	1.50	0.00
800.0	9.00	313.53	797.5	-7,444.5	32.4	-34.1	47.0	1.50	1.50	0.00
900.0	10.50	313.53	896.1	-7,345.9	44.1	-46.4	63.9	1.50	1.50	0.00
<b>EOB = 11.54° Inc</b>										
969.1	11.54	313.53	963.9	-7,278.1	53.2	-55.9	77.1	1.50	1.50	0.00
1,000.0	11.54	313.53	994.2	-7,247.8	57.4	-60.4	83.3	0.00	0.00	0.00
1,100.0	11.54	313.53	1,092.2	-7,149.8	71.2	-74.9	103.3	0.00	0.00	0.00
1,200.0	11.54	313.53	1,190.1	-7,051.9	85.0	-89.4	123.3	0.00	0.00	0.00
1,300.0	11.54	313.53	1,288.1	-6,953.9	98.7	-103.9	143.3	0.00	0.00	0.00
1,400.0	11.54	313.53	1,386.1	-6,855.9	112.5	-118.4	163.3	0.00	0.00	0.00
1,500.0	11.54	313.53	1,484.1	-6,757.9	126.3	-132.9	183.3	0.00	0.00	0.00
1,600.0	11.54	313.53	1,582.1	-6,659.9	140.1	-147.4	203.3	0.00	0.00	0.00
1,700.0	11.54	313.53	1,680.0	-6,562.0	153.8	-161.9	223.3	0.00	0.00	0.00
1,800.0	11.54	313.53	1,778.0	-6,464.0	167.6	-176.4	243.3	0.00	0.00	0.00
1,900.0	11.54	313.53	1,876.0	-6,366.0	181.4	-190.9	263.3	0.00	0.00	0.00
2,000.0	11.54	313.53	1,974.0	-6,268.0	195.2	-205.4	283.3	0.00	0.00	0.00
2,100.0	11.54	313.53	2,072.0	-6,170.0	208.9	-219.9	303.2	0.00	0.00	0.00
2,200.0	11.54	313.53	2,169.9	-6,072.1	222.7	-234.4	323.2	0.00	0.00	0.00
<b>Wasatch</b>										
2,263.3	11.54	313.53	2,232.0	-6,010.0	231.4	-243.6	335.9	0.00	0.00	0.00
2,300.0	11.54	313.53	2,267.9	-5,974.1	236.5	-248.9	343.2	0.00	0.00	0.00
2,400.0	11.54	313.53	2,365.9	-5,876.1	250.3	-263.4	363.2	0.00	0.00	0.00
2,500.0	11.54	313.53	2,463.9	-5,778.1	264.0	-277.9	383.2	0.00	0.00	0.00
2,600.0	11.54	313.53	2,561.9	-5,680.1	277.8	-292.4	403.2	0.00	0.00	0.00
2,700.0	11.54	313.53	2,659.8	-5,582.2	291.6	-306.9	423.2	0.00	0.00	0.00
<b>Surface Casing</b>										
2,741.0	11.54	313.53	2,700.0	-5,542.0	297.2	-312.9	431.4	0.00	0.00	0.00
2,800.0	11.54	313.53	2,757.8	-5,484.2	305.4	-321.4	443.2	0.00	0.00	0.00
2,900.0	11.54	313.53	2,855.8	-5,386.2	319.1	-335.9	463.2	0.00	0.00	0.00
3,000.0	11.54	313.53	2,953.8	-5,288.2	332.9	-350.4	483.2	0.00	0.00	0.00
3,100.0	11.54	313.53	3,051.8	-5,190.2	346.7	-364.9	503.2	0.00	0.00	0.00
3,200.0	11.54	313.53	3,149.7	-5,092.3	360.5	-379.4	523.2	0.00	0.00	0.00
3,300.0	11.54	313.53	3,247.7	-4,994.3	374.2	-393.9	543.2	0.00	0.00	0.00
3,400.0	11.54	313.53	3,345.7	-4,896.3	388.0	-408.4	563.2	0.00	0.00	0.00
3,500.0	11.54	313.53	3,443.7	-4,798.3	401.8	-422.9	583.2	0.00	0.00	0.00
3,600.0	11.54	313.53	3,541.7	-4,700.3	415.6	-437.4	603.1	0.00	0.00	0.00
3,700.0	11.54	313.53	3,639.6	-4,602.4	429.3	-451.9	623.1	0.00	0.00	0.00
3,800.0	11.54	313.53	3,737.6	-4,504.4	443.1	-466.4	643.1	0.00	0.00	0.00
3,900.0	11.54	313.53	3,835.6	-4,406.4	456.9	-480.9	663.1	0.00	0.00	0.00
4,000.0	11.54	313.53	3,933.6	-4,308.4	470.7	-495.4	683.1	0.00	0.00	0.00
4,100.0	11.54	313.53	4,031.6	-4,210.4	484.4	-509.9	703.1	0.00	0.00	0.00
4,200.0	11.54	313.53	4,129.5	-4,112.5	498.2	-524.4	723.1	0.00	0.00	0.00
<b>Wasatch "G" Sand</b>										
4,274.0	11.54	313.53	4,202.0	-4,040.0	508.4	-535.1	737.9	0.00	0.00	0.00
4,300.0	11.54	313.53	4,227.5	-4,014.5	512.0	-538.9	743.1	0.00	0.00	0.00
4,400.0	11.54	313.53	4,325.5	-3,916.5	525.8	-553.4	763.1	0.00	0.00	0.00

Database:	RMR1 Database	Local Co-ordinate Reference:	Well Puckett 22B2-1D
Company:	Petroleum Development Corp.	TVD Reference:	Puckett 22B2-1D @ 8242.0ft (H&P 318)
Project:	Mesa	MD Reference:	Puckett 22B2-1D @ 8242.0ft (H&P 318)
Site:	SENW Sec 1-T7S-R97W	North Reference:	True
Well:	Puckett 22B2-1D	Survey Calculation Method:	Minimum Curvature
Wellbore:	DD		
Design:	Plan #2		

Planned Survey											
Measured			Vertical	Subsea			Vertical	Dogleg	Build	Turn	
Depth	Inclination	Azimuth	Depth	Depth	+N/-S	+E/-W	Section	Rate	Rate	Rate	
(ft)	(°)	(°)	(ft)	(ft)	(ft)	(ft)	(ft)	(°/100ft)	(°/100ft)	(°/100ft)	(°/100ft)
4,500.0	11.54	313.53	4,423.5	-3,818.5	539.5	-567.9	783.1	0.00	0.00	0.00	
4,600.0	11.54	313.53	4,521.5	-3,720.5	553.3	-582.4	803.1	0.00	0.00	0.00	
<b>Fort Union</b>											
4,605.7	11.54	313.53	4,527.0	-3,715.0	554.1	-583.2	804.2	0.00	0.00	0.00	
4,700.0	11.54	313.53	4,619.4	-3,622.6	567.1	-596.9	823.1	0.00	0.00	0.00	
4,800.0	11.54	313.53	4,717.4	-3,524.6	580.9	-611.4	843.1	0.00	0.00	0.00	
<b>Base Fort Union</b>											
4,896.5	11.54	313.53	4,812.0	-3,430.0	594.2	-625.4	862.4	0.00	0.00	0.00	
4,900.0	11.54	313.53	4,815.4	-3,426.6	594.6	-625.9	863.1	0.00	0.00	0.00	
5,000.0	11.54	313.53	4,913.4	-3,328.6	608.4	-640.4	883.0	0.00	0.00	0.00	
5,100.0	11.54	313.53	5,011.4	-3,230.6	622.2	-654.9	903.0	0.00	0.00	0.00	
5,200.0	11.54	313.53	5,109.3	-3,132.7	636.0	-669.4	923.0	0.00	0.00	0.00	
5,300.0	11.54	313.53	5,207.3	-3,034.7	649.7	-683.9	943.0	0.00	0.00	0.00	
5,400.0	11.54	313.53	5,305.3	-2,936.7	663.5	-698.4	963.0	0.00	0.00	0.00	
5,500.0	11.54	313.53	5,403.3	-2,838.7	677.3	-712.9	983.0	0.00	0.00	0.00	
5,600.0	11.54	313.53	5,501.3	-2,740.7	691.1	-727.4	1,003.0	0.00	0.00	0.00	
5,700.0	11.54	313.53	5,599.2	-2,642.8	704.8	-741.9	1,023.0	0.00	0.00	0.00	
5,800.0	11.54	313.53	5,697.2	-2,544.8	718.6	-756.4	1,043.0	0.00	0.00	0.00	
<b>Mesaverde/Williams Fk</b> *											
5,876.3	11.54	313.53	5,772.0	-2,470.0	729.1	-767.5	1,058.3	0.00	0.00	0.00	
5,900.0	11.54	313.53	5,795.2	-2,446.8	732.4	-770.9	1,063.0	0.00	0.00	0.00	
<b>Start of Drop</b>											
5,994.8	11.54	313.53	5,888.1	-2,353.9	745.4	-784.7	1,081.9	0.00	0.00	0.00	
6,000.0	11.46	313.53	5,893.2	-2,348.8	746.2	-785.4	1,083.0	1.50	-1.50	0.00	
6,100.0	9.96	313.53	5,991.4	-2,250.6	759.0	-798.9	1,101.6	1.50	-1.50	0.00	
6,200.0	8.46	313.53	6,090.1	-2,151.9	770.0	-810.5	1,117.6	1.50	-1.50	0.00	
6,300.0	6.96	313.53	6,189.2	-2,052.8	779.2	-820.2	1,131.0	1.50	-1.50	0.00	
6,400.0	5.46	313.53	6,288.6	-1,953.4	786.7	-828.0	1,141.8	1.50	-1.50	0.00	
6,500.0	3.96	313.53	6,388.3	-1,853.7	792.3	-834.0	1,150.0	1.50	-1.50	0.00	
6,600.0	2.46	313.53	6,488.1	-1,753.9	796.2	-838.1	1,155.6	1.50	-1.50	0.00	
6,700.0	0.96	313.53	6,588.1	-1,653.9	798.2	-840.2	1,158.6	1.50	-1.50	0.00	
<b>EOD = 0° Inc - Top Gas Cell - Puckett 22B2-1D Tgt</b>											
6,763.9	0.00	0.00	6,652.0	-1,590.0	798.6	-840.6	1,159.1	1.50	-1.50	0.00	
6,800.0	0.09	215.06	6,688.1	-1,553.9	798.6	-840.6	1,159.1	0.25	0.25	0.00	
6,900.0	0.34	215.06	6,788.1	-1,453.9	798.3	-840.8	1,159.0	0.25	0.25	0.00	
7,000.0	0.59	215.06	6,888.1	-1,353.9	797.6	-841.3	1,158.9	0.25	0.25	0.00	
7,100.0	0.84	215.06	6,988.1	-1,253.9	796.6	-842.0	1,158.8	0.25	0.25	0.00	
7,122.0	0.90	215.06	7,010.0	-1,232.0	796.3	-842.2	1,158.7	0.25	0.25	0.00	
7,200.0	0.90	215.06	7,088.1	-1,153.9	795.3	-842.9	1,158.6	0.00	0.00	0.00	
7,300.0	0.90	215.06	7,188.1	-1,053.9	794.0	-843.8	1,158.4	0.00	0.00	0.00	
7,400.0	0.90	215.06	7,288.0	-954.0	792.8	-844.7	1,158.2	0.00	0.00	0.00	
7,500.0	0.90	215.06	7,388.0	-854.0	791.5	-845.6	1,158.0	0.00	0.00	0.00	
7,600.0	0.90	215.06	7,488.0	-754.0	790.2	-846.5	1,157.8	0.00	0.00	0.00	
7,700.0	0.90	215.06	7,588.0	-654.0	788.9	-847.4	1,157.6	0.00	0.00	0.00	
7,800.0	0.90	215.06	7,688.0	-554.0	787.6	-848.3	1,157.5	0.00	0.00	0.00	
7,900.0	0.90	215.06	7,788.0	-454.0	786.4	-849.2	1,157.3	0.00	0.00	0.00	
8,000.0	0.90	215.06	7,888.0	-354.0	785.1	-850.1	1,157.1	0.00	0.00	0.00	
8,100.0	0.90	215.06	7,988.0	-254.0	783.8	-851.0	1,156.9	0.00	0.00	0.00	
<b>Cameo</b>											
8,164.1	0.90	215.06	8,052.0	-190.0	783.0	-851.6	1,156.8	0.00	0.00	0.00	
8,200.0	0.90	215.06	8,087.9	-154.1	782.5	-851.9	1,156.7	0.00	0.00	0.00	
8,300.0	0.90	215.06	8,187.9	-54.1	781.2	-852.8	1,156.5	0.00	0.00	0.00	
8,400.0	0.90	215.06	8,287.9	45.9	780.0	-853.7	1,156.3	0.00	0.00	0.00	

Database:	RMR1 Database	Local Co-ordinate Reference:	Well Puckett 22B2-1D
Company:	Petroleum Development Corp.	TVD Reference:	Puckett 22B2-1D @ 8242.0ft (H&P 318)
Project:	Mesa	MD Reference:	Puckett 22B2-1D @ 8242.0ft (H&P 318)
Site:	SENW Sec 1-T7S-R97W	North Reference:	True
Well:	Puckett 22B2-1D	Survey Calculation Method:	Minimum Curvature
Wellbore:	DD		
Design:	Plan #2		

Planned Survey											
Measured Depth (ft)	Inclination (°)	Azimuth (°)	Vertical Depth (ft)	Subsea Depth (ft)	+N/-S (ft)	+E/-W (ft)	Vertical Section (ft)	Dogleg Rate (°/100ft)	Build Rate (°/100ft)	Turn Rate (°/100ft)	
8,500.0	0.90	215.06	8,387.9	145.9	778.7	-854.6	1,156.1	0.00	0.00	0.00	
8,600.0	0.90	215.06	8,487.9	245.9	777.4	-855.5	1,155.9	0.00	0.00	0.00	
<b>Rollins</b>											
8,664.1	0.90	215.06	8,552.0	310.0	776.6	-856.0	1,155.8	0.00	0.00	0.00	
8,700.0	0.90	215.06	8,587.9	345.9	776.1	-856.4	1,155.7	0.00	0.00	0.00	
8,800.0	0.90	215.06	8,687.9	445.9	774.9	-857.3	1,155.6	0.00	0.00	0.00	
<b>TD = 8864.1' MD - Puckett 22B2-1D BHL</b>											
8,864.1	0.90	215.06	8,752.0	510.0	774.0	-857.8	1,155.4	0.00	0.00	0.00	

Design Targets										
Target Name	Dip Angle (°)	Dip Dir. (°)	TVD (ft)	+N/-S (ft)	+E/-W (ft)	Northing (ft)	Easting (ft)	Latitude	Longitude	
Puckett 22B2-1D Tgt - hit/miss target - Shape - Point	0.00	0.00	6,652.0	798.6	-840.6	1,609,695.14	2,245,740.08	39.476929	-108.172442	
Puckett 22B2-1D BHL - plan hits target center - Circle (radius 60.0)	0.00	0.00	8,752.0	774.0	-857.8	1,609,671.09	2,245,722.12	39.476861	-108.172503	

Casing Points					
Measured Depth (ft)	Vertical Depth (ft)	Name	Casing Diameter (")	Hole Diameter (")	
2,741.0	2,700.0	Surface Casing			

Formations						
Measured Depth (ft)	Vertical Depth (ft)	Name	Lithology	Dip (°)	Dip Direction (°)	
2,263.3	2,232.0	Wasatch				
4,274.0	4,202.0	Wasatch "G" Sand				
4,605.7	4,527.0	Fort Union				
4,896.5	4,812.0	Base Fort Union				
5,876.3	5,772.0	Mesaverde/Williams Fk *				
6,763.9	6,652.0	Top Gas Cell				
8,164.1	8,052.0	Cameo				
8,664.1	8,552.0	Rollins				

Database:	RMR1 Database	Local Co-ordinate Reference:	Well Puckett 22B2-1D
Company:	Petroleum Development Corp.	TVD Reference:	Puckett 22B2-1D @ 8242.0ft (H&P 318)
Project:	Mesa	MD Reference:	Puckett 22B2-1D @ 8242.0ft (H&P 318)
Site:	SENW Sec 1-T7S-R97W	North Reference:	True
Well:	Puckett 22B2-1D	Survey Calculation Method:	Minimum Curvature
Wellbore:	DD		
Design:	Plan #2		

### Plan Annotations

Measured Depth (ft)	Vertical Depth (ft)	Local Coordinates		Comment
		+N/-S (ft)	+E/-W (ft)	
200.0	200.0	0.0	0.0	KOP @ 200'
969.1	963.9	53.2	-55.9	EOB = 11.54° Inc
5,994.8	5,888.1	745.4	-784.7	Start of Drop
6,763.9	6,652.0	798.6	-840.6	EOD = 0° Inc
8,864.1	8,752.0	774.0	-857.8	TD = 8864.1' MD