

**PETROLEUM DEVELOPMENT CORP.**

Well location, PUCKETT #22C-1D, located as shown in TRACT 63 of Section 1, T7S, R97W, 6th P.M., Garfield County, Colorado.

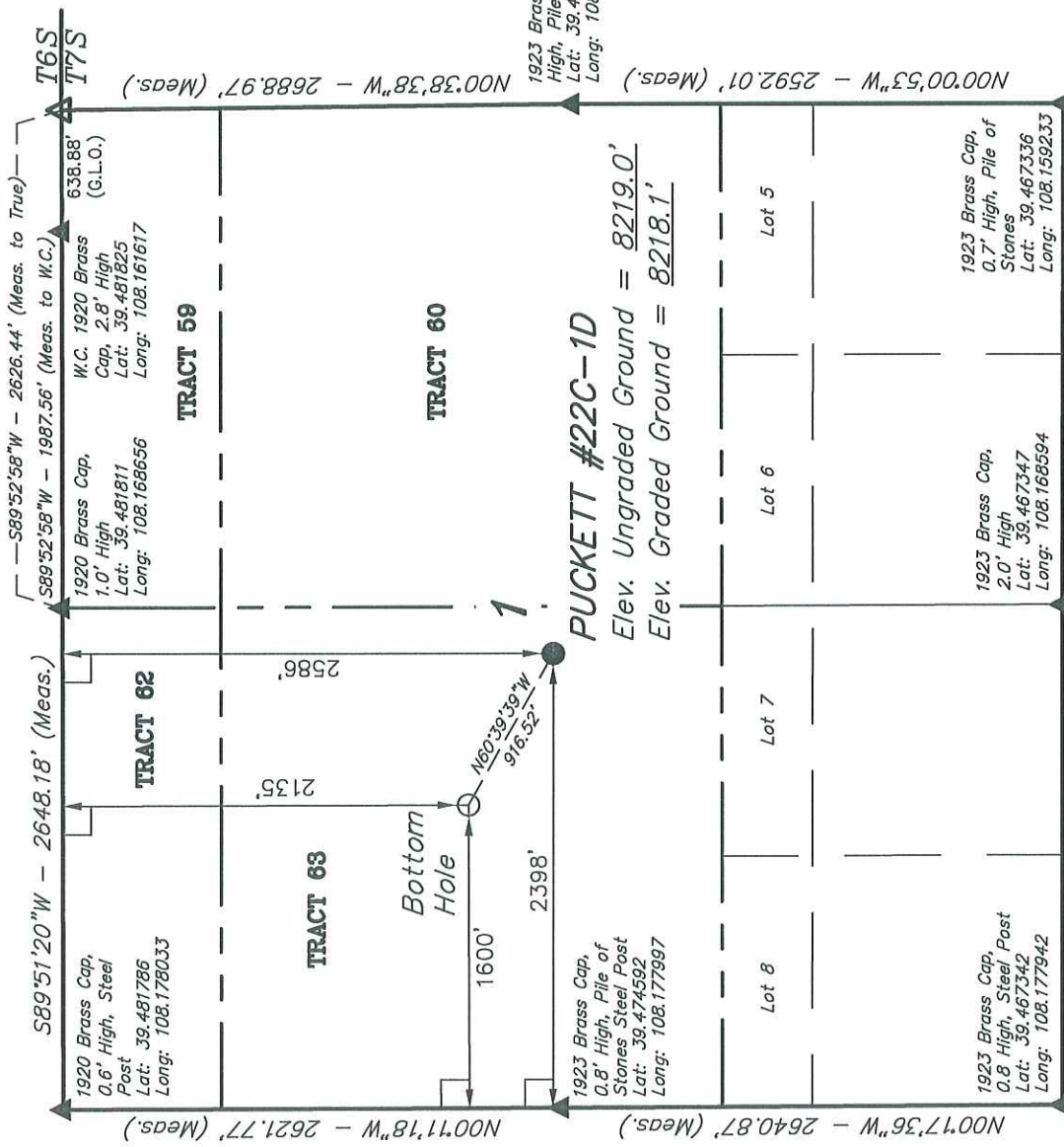
**BASIS OF ELEVATION**

SPOT ELEVATION AT THE NORTHWEST CORNER OF SECTION 30, T5S, R95W, 6th P.M. TAKEN FROM THE FORKED GULCH QUADRANGLE, COLORADO, GARFIELD COUNTY, 7.5 MINUTE SERIES (TOPOGRAPHICAL MAP) PUBLISHED BY THE UNITED STATES DEPARTMENT OF THE INTERIOR, GEOLOGICAL SURVEY. SAID ELEVATION IS MARKED AS BEING 5966 FEET.

**BASIS OF BEARINGS**

BASIS OF BEARINGS IS A G.P.S. OBSERVATION.

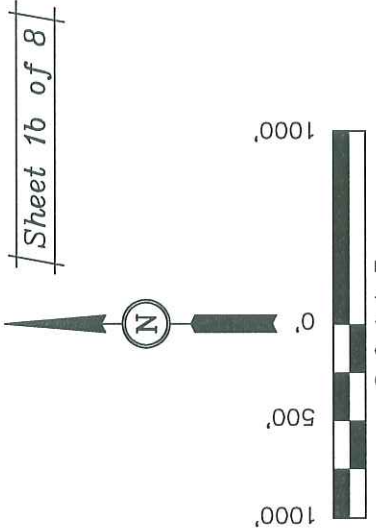
**T7S, R97W, 6th P.M.**



Revised: 06-01-10

**UINTAH ENGINEERING & LAND SURVEYING**  
 85 SOUTH 200 EAST - VERNAL, UTAH 84078  
 (435) 789-1017

SCALE	1" = 1000'	DATE SURVEYED:	08-12-09	DATE DRAWN:	04-13-10
PARTY	B. J. B. B.	REFERENCES	G.L.O. PLAT		
WEATHER	WARM	FILE	PETROLEUM DEVELOPMENT CORP.		



**CERTIFICATE**

THIS IS TO CERTIFY THAT THE ABOVE PLAT WAS PREPARED FROM FIELD NOTES OF ACTUAL SURVEYS MADE BY ME OR UNDER MY SUPERVISION AND THAT THE SAME ARE TRUE AND CORRECT TO THE BEST OF MY KNOWLEDGE AND BELIEF.

*[Signature]*  
 REGISTERED LAND SURVEYOR  
 REGISTRATION NO. 77492  
 STATE OF COLORADO

**LEGEND:**

- = 90° SYMBOL
- = PROPOSED WELL HEAD.
- ▲ = SECTION CORNERS RE-ESTABLISHED. (Not Set on Ground)
- ▲ = SECTION CORNERS LOCATED.

**NOTE:**  
 SEE ADDENDUM TO LEGAL PLAT FOR EXISTING IMPROVEMENTS WITHIN 400' OF THE PROPOSED DISTURBANCE.

PDOP = 2.4	R 97 W	R 96 W
NAD 83 (TARGET BOTTOM HOLE)	NAD 83 (SURFACE LOCATION)	
LATITUDE = 39°28'33.39" (39.475942)	LATITUDE = 39°28'28.96" (39.474711)	
LONGITUDE = 108°10'20.41" (108.172336)	LONGITUDE = 108°10'10.22" (108.169506)	
NAD 27 (TARGET BOTTOM HOLE)	NAD 27 (SURFACE LOCATION)	
LATITUDE = 39°28'33.47" (39.475964)	LATITUDE = 39°28'29.04" (39.474733)	
LONGITUDE = 108°10'18.13" (108.171703)	LONGITUDE = 108°10'07.94" (108.168872)	