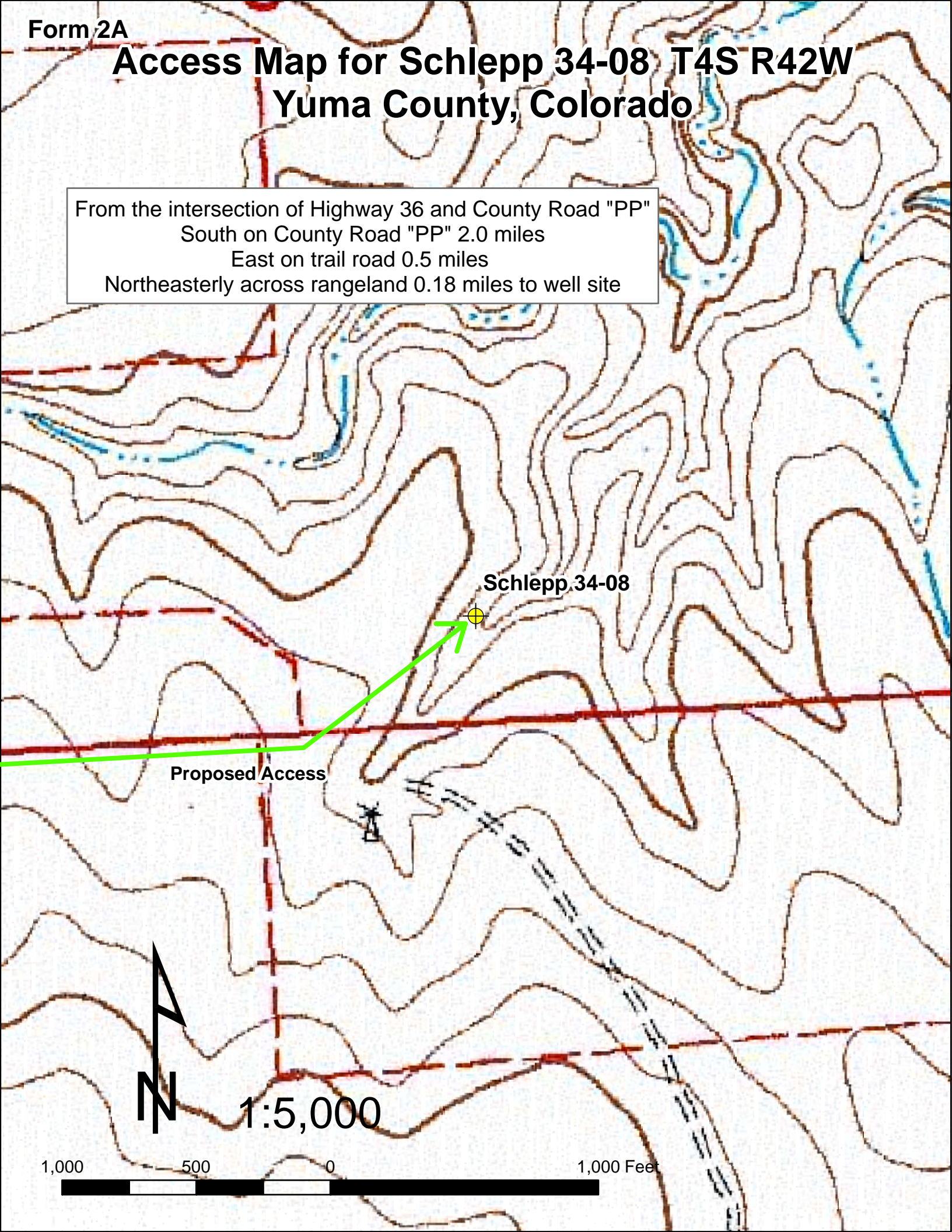


# Access Map for Schlepp 34-08 T4S R42W Yuma County, Colorado

From the intersection of Highway 36 and County Road "PP"  
South on County Road "PP" 2.0 miles  
East on trail road 0.5 miles  
Northeasterly across rangeland 0.18 miles to well site



Schlepp 34-08

Proposed Access



1:5,000

