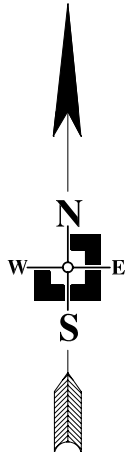
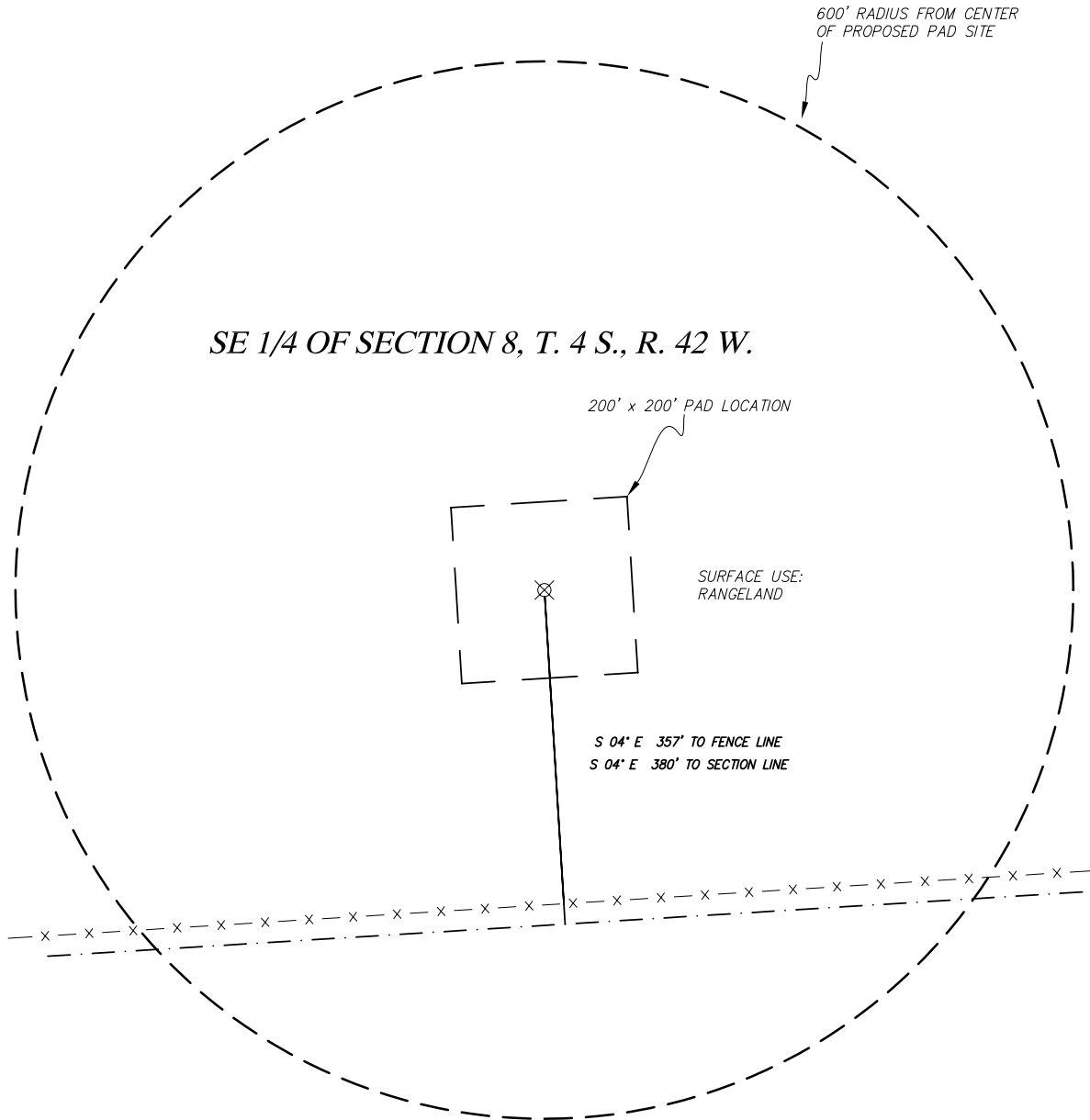


SCHLEPP #34-08 4S-42W

LOCATION DRAWING

YUMA COUNTY, COLORADO
MARCH 26, 2010



LEGEND

- PROPOSED WELL LOCATION
- FENCE LINE
- SECTION LINE

SCALE 1" = 200'

NOTE:

- NEAREST RAILROAD - 24.5 +/- MILES TO NORTH
- NEAREST RIVER - SOUTH FORK OF REPUBLICAN RIVER - 4.8 +/- MILES SOUTHEAST
- NEAREST BODY OF WATER - BONNY RESERVOIR - 7.9 +/- MILES SOUTHWEST



THREE CORNERS SURVEYING AND MAPPING, LLC

PO Box 463; 312 Main Street 970-332-4133
Wray, CO 80758 3cornerssurveying@centurytel.net

