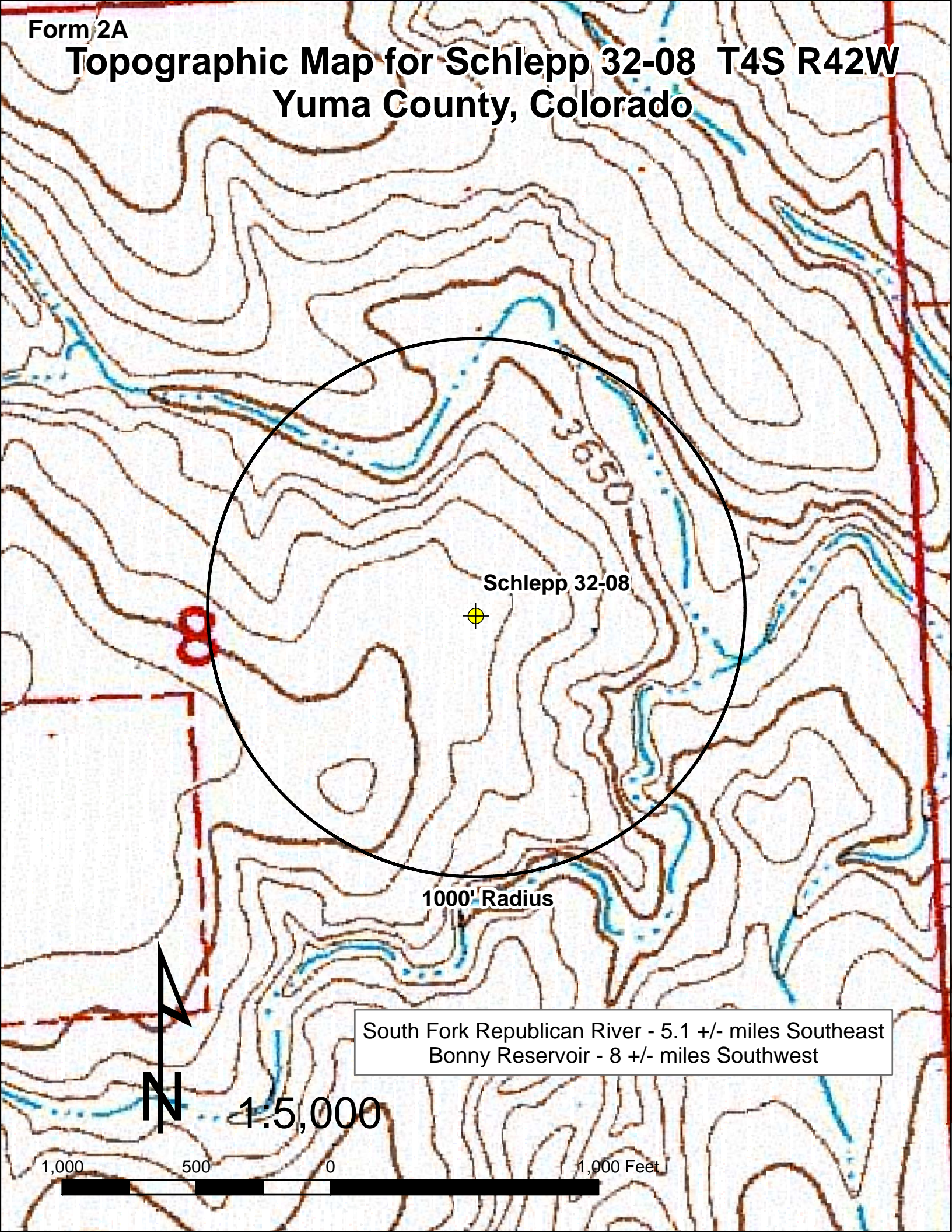


Form 2A

# Topographic Map for Schlepp 32-08 T4S R42W Yuma County, Colorado



Schlepp 32-08

1000' Radius

South Fork Republican River - 5.1 +/- miles Southeast  
Bonny Reservoir - 8 +/- miles Southwest

N

1.5,000

1,000

500

0

1,000 Feet