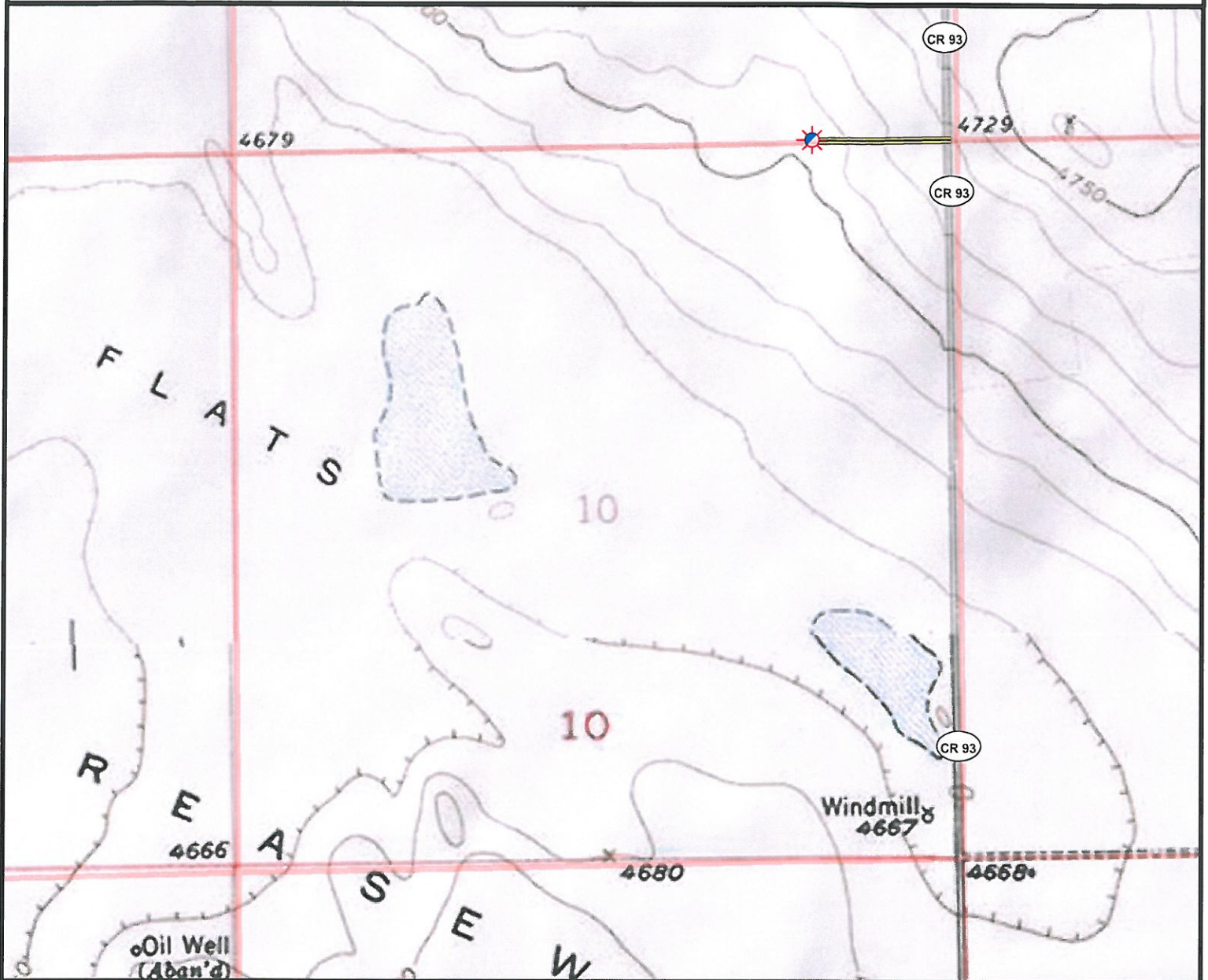


Access Road Map



Legend

- | | | | |
|--|----------------------|--|----------------------|
| | Proposed Well | | Building/Residence |
| | Existing Well | | Oil & Gas Equipment |
| | Plugged Well | | Water Body |
| | Water Well | | Utility Box |
| | CattleGuard/Gate | | Railroad |
| | Bridge | | Fence |
| | Disturbance Area | | Overhead Power Line |
| | 1000' Radius | | Underground Pipeline |
| | Facilities Enclosure | | Access Road |
| | | | Ditch/Canal |
| | | | Concrete Ditch |

Access Road Map

RICKARDS 41-10H

Surface Location: T6N R61W S10

Field Date: 06/17/2010
 Drawing Date: 06/23/2010
 Drafter: KLM
 Checked By: KLM

Topographic data courtesy of USGS

Prepared for:
PETROLEUM
DEVELOPMENT
CORPORATION



Use our resources to find yours!
www.petro-fs.com

1801 W. 13th Ave Suite 207
 Denver, CO 80204 Rifle, CO 81650
 (303) 928-7128 (970) 625-4740