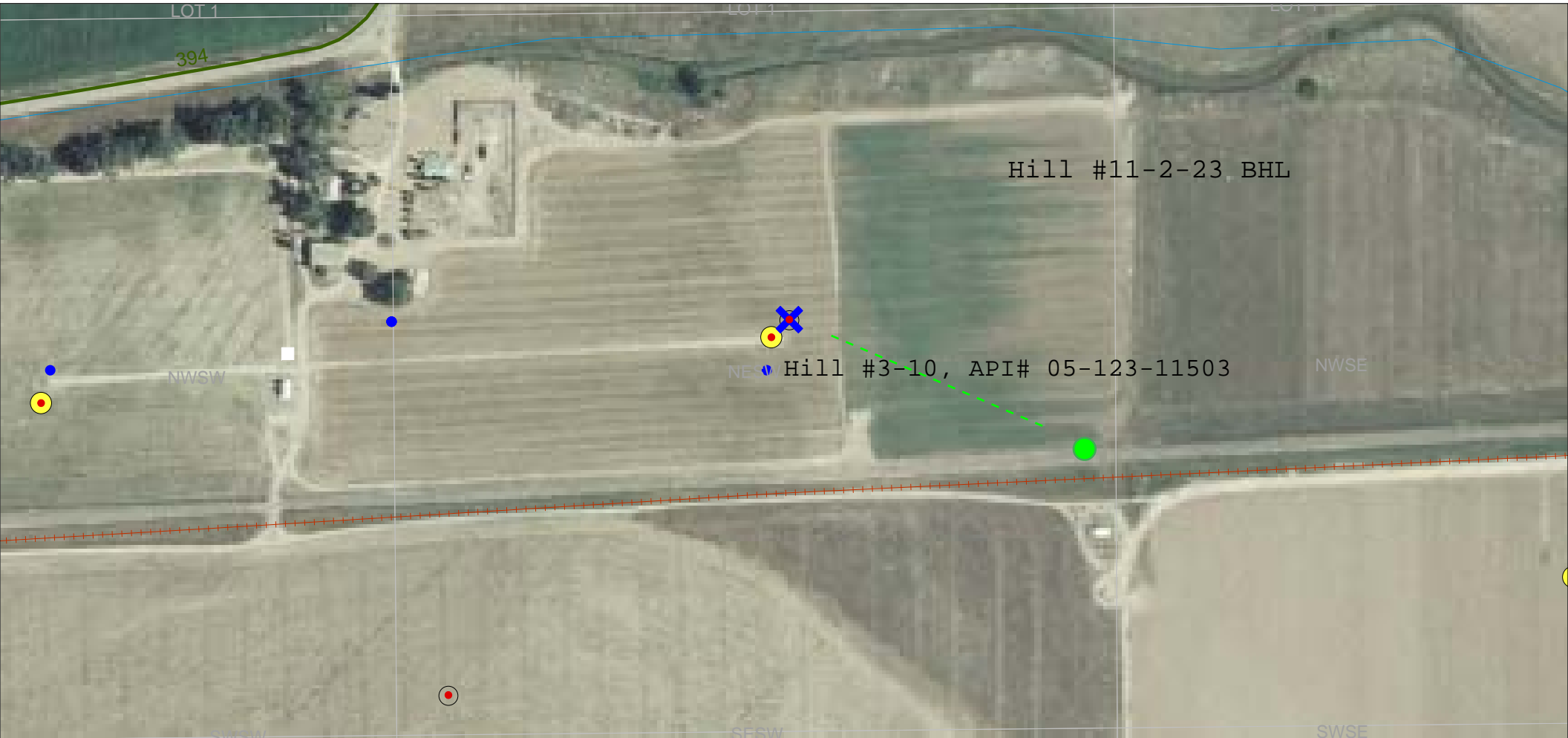
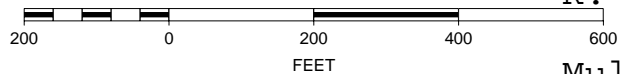


Surface location ● Directional well bore BHL ●

CORR 7-23-10



SCALE 1 : 2,542



K. P. Kauffman Company, Inc.

Multi-well pad plan; surface and bottom hole locations (BHLs)

Hill #11-2-23 (Hill #3-10) well pad

NESW section 2-T4N-R66W

Weld Co., Colorado

N

