



02621723

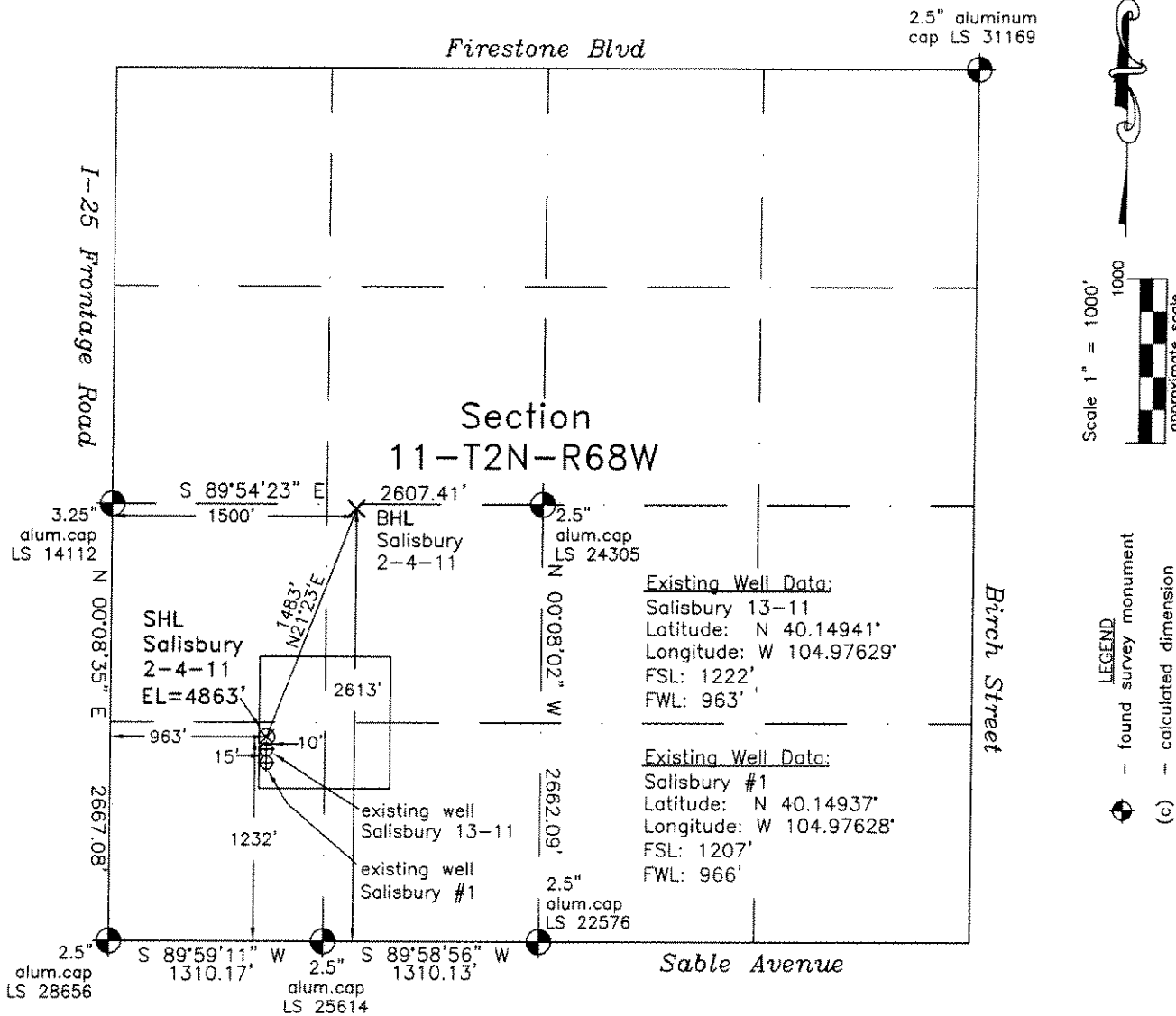
Frederick Land Surveying

6760 North Franklin Avenue

Loveland, Colorado 80538

# WELL LOCATION CERTIFICATE

THIS MAP DOES NOT REPRESENT A BOUNDARY SURVEY



**LEGEND:**  
 — found survey monument  
 (c) — calculated dimension

In accordance with a request from Doug Pearlman of EnCana Oil & Gas (USA) Inc., Frederick Land Surveying, Inc. has determined the location of the **Salisbury 2-4-11** well site to be SHL 1232' FSL and 963' FWL (BHL 2613' FSL and 1500' FWL) as measured at ninety (90) degrees from the section lines of Section 11, Township 2 North, Range 68 West of the 6th Principal Meridian, Weld County, Colorado.

Proposed Surface Hole Data:

Latitude: N 40.14944° (BHL 40.15322°)  
 Longitude: W 104.97629° (BHL 104.97433°)  
 Nearest: Building 368' southeast Above Ground Utility 1262' southeast  
 Public Road 820' west Railroad 15,600' northeast  
 Property Line: 150' west  
 PDOP: 2.6

Notes:

- 1) Bearings and distances based on NAD 83 Colorado North State Plane Coordinates using RTK GPS observations taken 7/14/10 by operator Tom Winans.
- 2) Conversion factor to ground (1.000271630).
- 3) Elevations based on NGVD 88 GPS heights and Geoid 2003 corrections.
- 4) See improvement map for visible improvements within 400 feet.
- 5) The location falls on a non-crop dryland field.

**NOTICE:** According to Colorado law you MUST commence any legal action based upon any defect in this W.L.C. within three years after you first discover such defect. In no event may any action based upon any defect in this W.L.C. be commenced more than ten years from this said date of the certification shown hereon.

I hereby certify that this Well Location Certificate was prepared by me or under my direct supervision on 7/14/10 for and on behalf of EnCana Oil & Gas (USA).

Surveyor Robert J. ...  
 I am not a Land Surveyor and this is not to be relied upon for establishment of fences, buildings, or other future improvement lines.  
 John ... PLS#38219  
 Job #: