



02621721

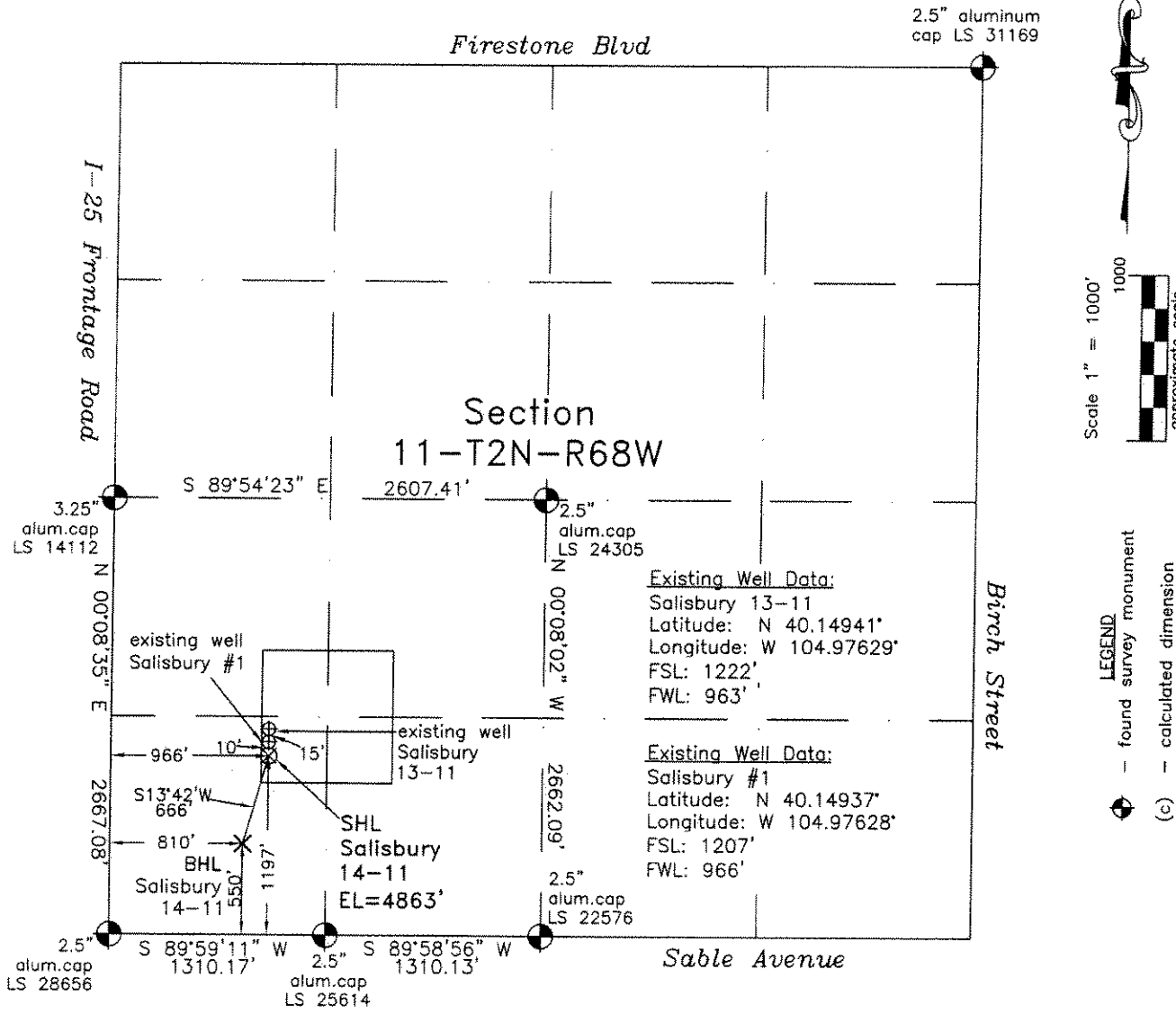
Frederick Land Surveying

6760 North Franklin Avenue

Loveland, Colorado 80538

WELL LOCATION CERTIFICATE

THIS MAP DOES NOT REPRESENT A BOUNDARY SURVEY



Scale 1" = 1000'

approximate scale

LEGEND

- found survey monument
- (c) — calculated dimension

Existing Well Data:
 Salisbury 13-11
 Latitude: N 40.14941°
 Longitude: W 104.97629°
 FSL: 1222'
 FWL: 963'

Existing Well Data:
 Salisbury #1
 Latitude: N 40.14937°
 Longitude: W 104.97628°
 FSL: 1207'
 FWL: 966'

In accordance with a request from Doug Pearlman of EnCana Oil & Gas (USA) Inc., Frederick Land Surveying, Inc. has determined the location of the **Salisbury 14-11** well site to be SHL 1197' FSL and 966' FWL (BHL 550' FSL and 810' FWL) as measured at ninety (90) degrees from the section lines of Section 11, Township 2 North, Range 68 West of the 6th Principal Meridian, Weld County, Colorado.

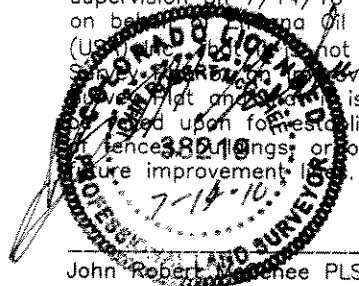
Proposed Surface Hole Data:

Latitude: N 40.14934° (BHL 40.14756°)
 Longitude: W 104.97628° (BHL 104.97686°)
 Nearest: Building 337' southeast Above Ground Utility 1228' southeast
 Public Road 823' west Railroad 15,600' northeast
 Property Line: 155' west

PDOP: 1.9

- Notes:
- 1) Bearings and distances based on NAD 83 Colorado North State Plane Coordinates using RTK GPS observations taken 7/14/10 by operator Tom Winans.
 - 2) Conversion factor to ground (1.000271630).
 - 3) Elevations based on NGVD 88 GPS heights and Geoid 2003 corrections.
 - 4) See improvement map for visible improvements within 400 feet.
 - 5) The location falls on non-crop dryland field.

I hereby certify that this Well Location Certificate was prepared by me or under my direct supervision on 7/14/10 for and on behalf of EnCana Oil & Gas (USA) Inc. as not a Land Surveyor. This is not to be relied upon for establishment of fences, boundaries, or other future improvements.



John Robert L. Chee PLS#38219
 Job #: 07062.004rev

NOTICE: According to Colorado law you MUST commence any legal action based upon any defect in this W.L.C. within three years after you first discover such defect. In no event may any action based upon any defect in this W.L.C. be commenced more than ten years from this said date of the certification shown hereon.