

Steil Surveying Services, LLC

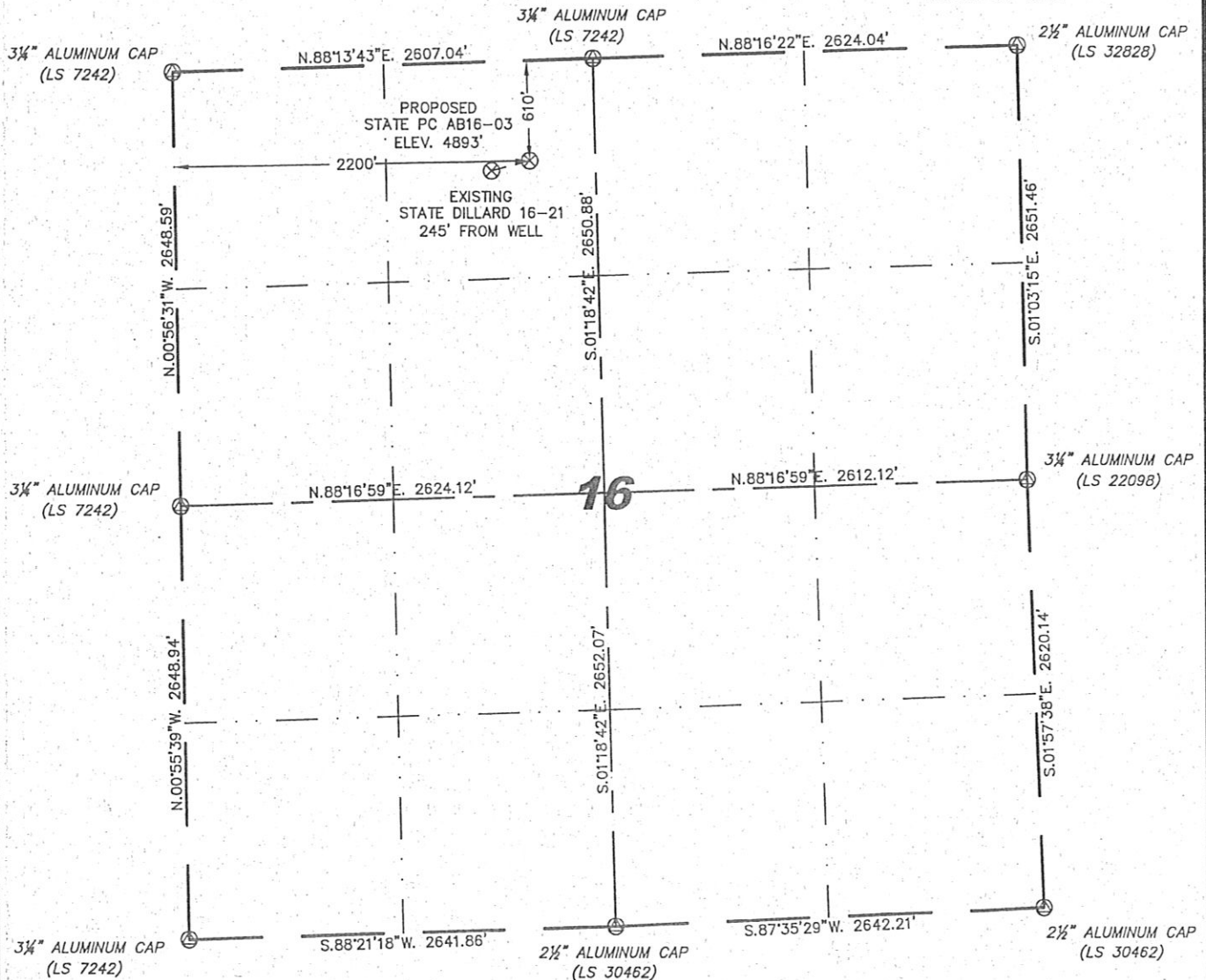
1102 West 19th Street P.O. BOX 2073

Cheyenne, Wyoming 82009

# WELL LOCATION CERTIFICATE

THIS MAP DOES NOT REPRESENT A BOUNDARY SURVEY

SECTION 16  
TOWNSHIP 7 NORTH  
RANGE 64 WEST



0 1000  
Scale: 1" = 1000'

IN ACCORDANCE WITH A REQUEST FROM ERIK VAN DECAR - NOBLE ENERGY INC, STEIL SURVEYING SERVICES, LLC HAS DETERMINED THE LOCATION OF THE STATE PC AB16-03 WELL TO BE 610' FNL, 2200' FWL, AS MEASURED AT NINETY (90) DEGREES FROM THE SECTION LINES, SECTION 16, TOWNSHIP 7 NORTH, RANGE 64 WEST, 6TH PRINCIPLE MERIDIAN, WELD COUNTY, COLORADO.

I HEREBY CERTIFY THAT THIS WELL LOCATION CERTIFICATE WAS PREPARED BY ME, OR UNDER MY DIRECT SUPERVISION, THAT THE FIELD WORK WAS COMPLETED ON 06/15/2010, FOR AND ON BEHALF OF NOBLE ENERGY INC, THAT IT IS NOT A LAND SURVEY PLAT OR AN IMPROVEMENT SURVEY PLAT, AND THAT IT IS NOT TO BE RELIED UPON FOR ESTABLISHMENT OF FENCE, BUILDING, OR OTHER FUTURE IMPROVEMENT LINES.

## NOTES:

- 1) BASIS OF BEARINGS FOR THIS MAP ARE BASED UPON GPS OBSERVATIONS MADE ON 03/02/2010 BETWEEN MONUMENTS LOCATED AT THE SOUTHEAST SECTION CORNER AND THE NORTHEAST SECTION CORNER OF SAID SECTION AND WITH ALL BEARINGS SHOWN HEREON RELATIVE THERETO.
- 2) ELEVATIONS ARE BASED UPON NGS OPUS SOLUTION NAVD 88 DATUM.
- 3) THE NEAREST EXISTING WELL IS: STATE DILLARD 16-21, 245' SOUTHWEST.
- 4) SEE VISIBLE IMPROVEMENTS EXHIBIT FOR ALL IMPROVEMENTS WITHIN 600'.
- 5) THE LOCATION FALLS IN PASTURE LAND.

LATITUDE & LONGITUDE (NAD 83 SURFACE HOLE):

LATITUDE: N 40.57862°

LONGITUDE: W 104.55612°

PDOP: 1.7

QUARTER-QUARTER: NE/4NW/4

NEAREST PROPERTY LINE: 411' TO THE EAST

## LEGEND

(A) FOUND SURVEY MONUMENT PER  
MONUMENT RECORD - EXCEPTIONS NOTED.

(C) CALCULATED DIMENSION

NOTICE: According to Colorado law you MUST commence any legal action based upon any defect in this W.L.C. within three years after you first discover such defect. In no event may any action based upon any defect in this W.L.C. be commenced more than ten years from this sold date of the certification shown hereon.

David C. Holmes  
Professional Land Surveyor Registration No. 32828  
State of Colorado

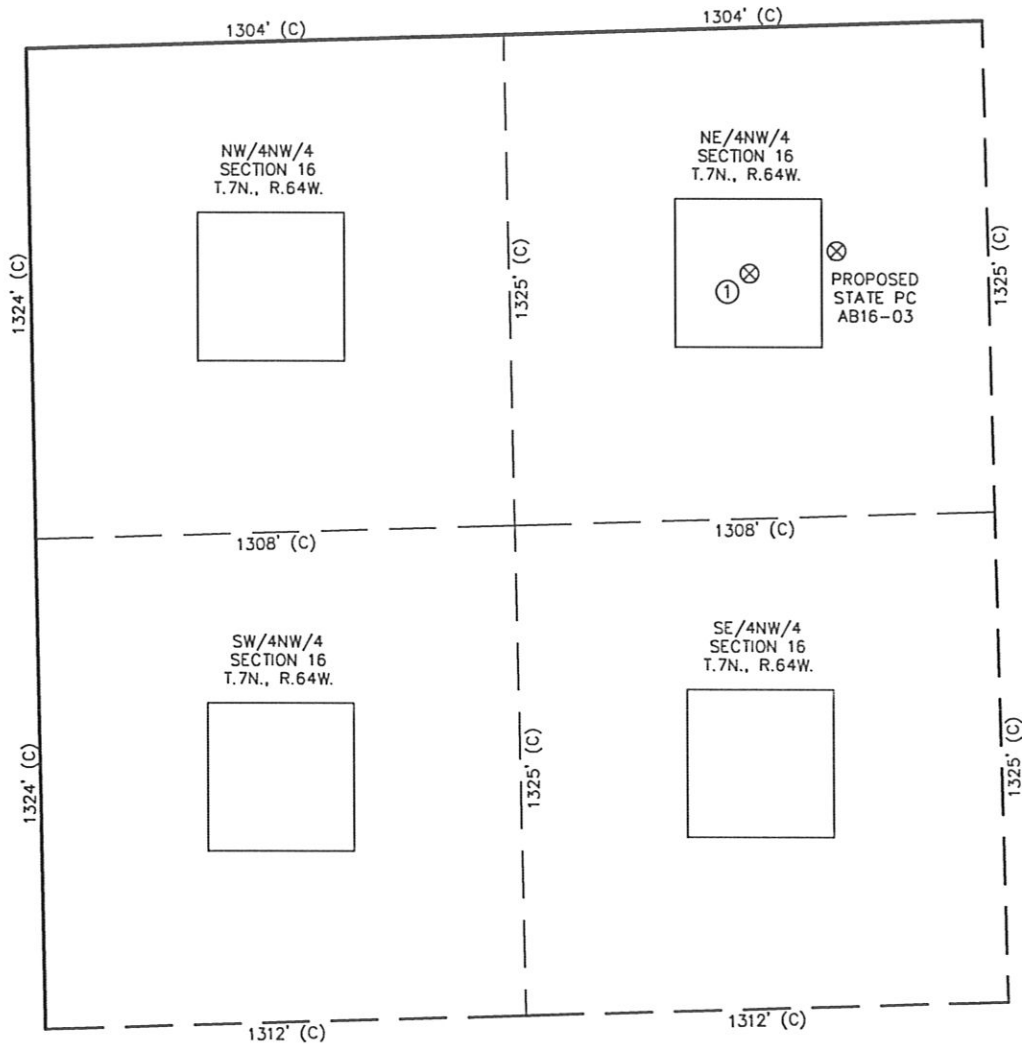
JOB #: 10086

Completed 06/18/2010



# SITE SKETCH – STATE PC AB16-03

SECTION 16  
TOWNSHIP 7 NORTH  
RANGE 64 WEST



①

STATE DILLARD  
16-21  
NE/NW SEC. 16  
664' FNL  
1961' FWL  
EL 4896'  
N 40.57846  
W 104.55697  
PDOP 3.3

## NOTES:

- 1) THIS SKETCH DOES NOT REPRESENT A BOUNDARY SURVEY.
- 2) THE DATUM FOR THE LATITUDES AND LONGITUDES ON THIS SKETCH IS NAD83.



Scale: 1" = 500'