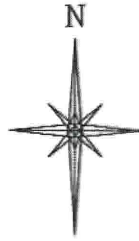


R. 97 W.



SCALE 1" = 1000'

T. 6 S.
SHL

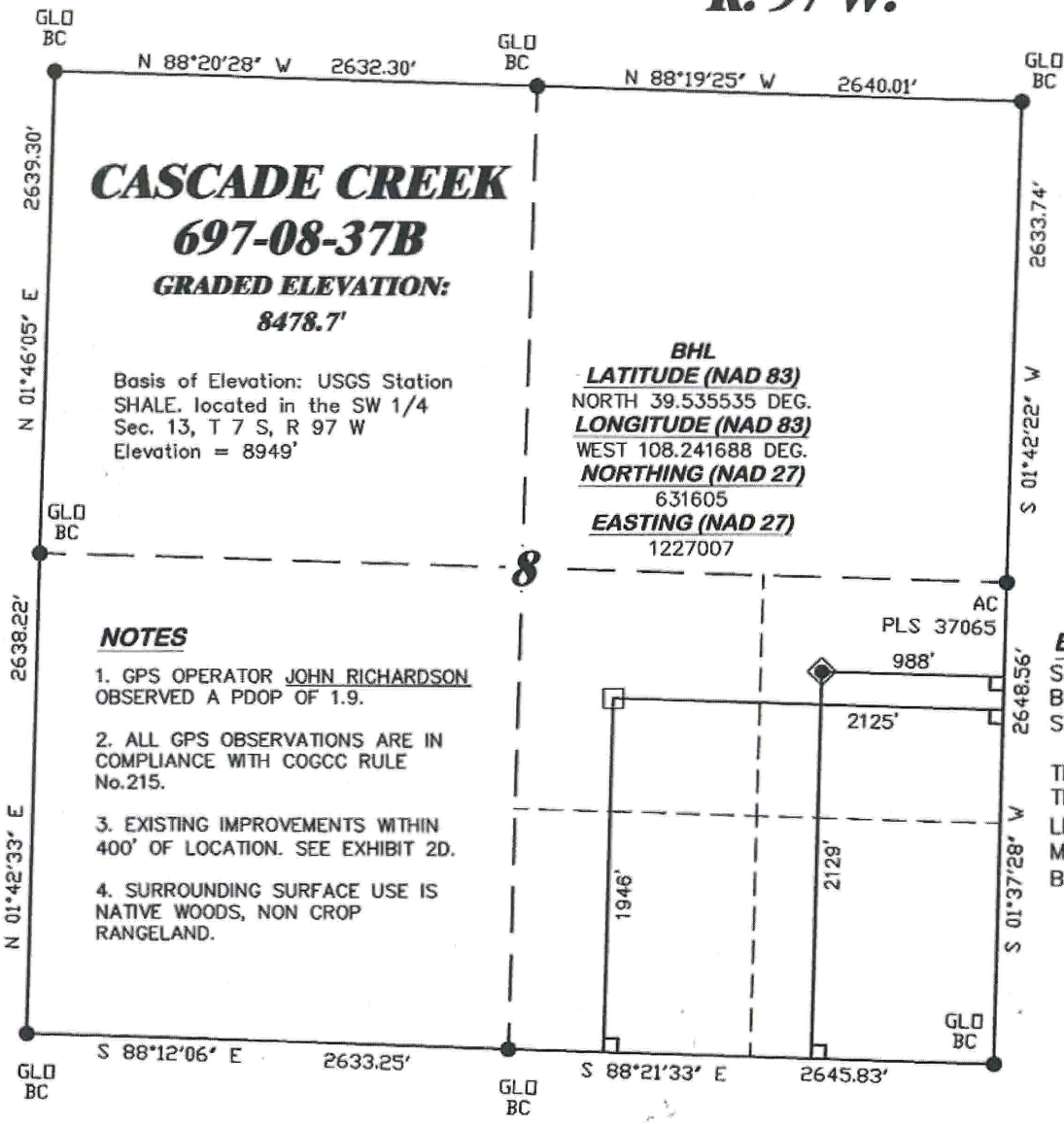
LATITUDE (NAD 83)
NORTH 39.536041 DEG.
LONGITUDE (NAD 83)
WEST 108.237659 DEG.
NORTHING (NAD 27)
631754.70
EASTING (NAD 27)
1228148.62

BASIS OF BEARING/DATUM
SPCS CO CENTRAL NAD 27
BASED ON NGS TRIANGULATION
STATION "SHALE"

THE BASIS OF BEARINGS FOR
THIS SURVEY IS THE NORTH
LINE OF THE NE 1/4 OF SECTION 8,
MONUMENTED BY GLO BC'S AND
BEARING N 88° 19' 25" W.

LEGEND

- ◆ WELL LOCATION
- APPROX. BHL
- L DENOTES 90° TIE
- FOUND MONUMENT



CASCADE CREEK
697-08-37B
GRADED ELEVATION:
8478.7'

Basis of Elevation: USGS Station
SHALE, located in the SW 1/4
Sec. 13, T 7 S, R 97 W
Elevation = 8949'

BHL
LATITUDE (NAD 83)
NORTH 39.535535 DEG.
LONGITUDE (NAD 83)
WEST 108.241688 DEG.
NORTHING (NAD 27)
631605
EASTING (NAD 27)
1227007

NOTES

1. GPS OPERATOR JOHN RICHARDSON
OBSERVED A PDOP OF 1.9.
2. ALL GPS OBSERVATIONS ARE IN
COMPLIANCE WITH COGCC RULE
No.215.
3. EXISTING IMPROVEMENTS WITHIN
400' OF LOCATION. SEE EXHIBIT 2D.
4. SURROUNDING SURFACE USE IS
NATIVE WOODS, NON CROP
RANGELAND.

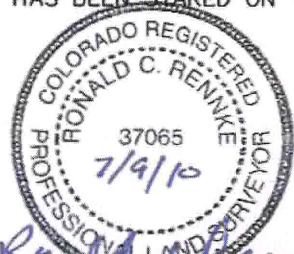
SURVEYOR'S STATEMENT

I, RONALD C. RENNKE, AN EMPLOYEE AND AGENT ON BEHALF OF D.R. GRIFFIN & ASSOCIATES, INC. STATE THE PLAT HEREON IS A CORRECT REPRESENTATION OF A SURVEY MADE UNDER MY SUPERVISION ON JULY 1, 2010 OF THE SHOWN CASCADE CREEK 697-08-37B AND THAT THE LOCATION HAS BEEN STAKED ON THE GROUND AS SHOWN ON THE PLAT.



Notice: In accordance with Colorado State Law, any legal action based upon any defect in this survey plat must commence within three (3) years after first discovery of such defect. In no event, may any action based upon any defect in this survey plat be commenced more than ten (10) years from the date of certification shown hereon.

CC 608-43-31 PAD



COLORADO PLS No. 37065

DRG GRIFFIN & ASSOCIATES, INC. (307) 362-5028 1414 ELK ST., ROCK SPRINGS, WY 82901	
DRAWN: 7/8/10 - DEH	SCALE: 1" = 1000'
REVISED: N/A	DRG JOB No. 11695
EXHIBIT 1	

PLAT OF DRILLING LOCATION FOR
OXY USA WTP LP
SHL IN NESE SECTION 8
2129' F/SL & 988' F/EL, SECTION 8,
T. 6 S., R. 97 W., 6th P.M.,
GARFIELD COUNTY, COLORADO