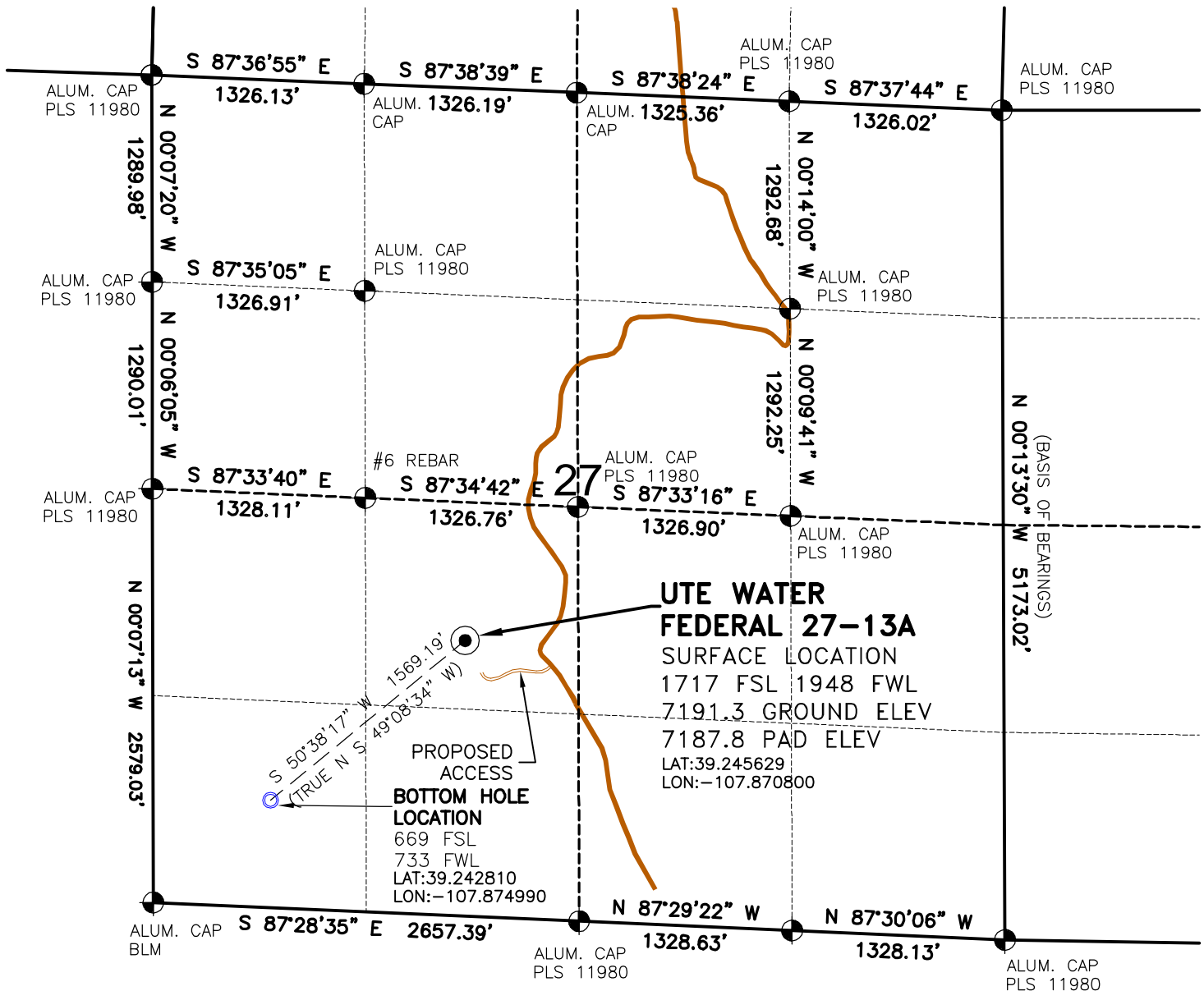


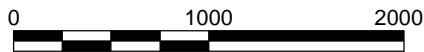
WELL LOCATION MAP

UTE WATER
27-11 PAD



**UTE WATER
FEDERAL 27-13A**
SURFACE LOCATION
1717 FSL 1948 FWL
7191.3 GROUND ELEV
7187.8 PAD ELEV
LAT:39.245629
LON:-107.870800

**PROPOSED
ACCESS
BOTTOM HOLE
LOCATION**
669 FSL
733 FWL
LAT:39.242810
LON:-107.874990



Graphic Scale in Feet
1" = 1000'

SURVEYOR'S STATEMENT

The undersigned hereby states that the well location shown hereon was staked on the ground based on existing monumentation and/or physical evidence found in the field and is correct to the best of my knowledge, information and belief.



NOTES

- 1.) Horizontal and vertical datum based on Mesa County control point "SN23" with an elevation of 8008.15. NAVD 1988.
- 2.) All directions, distances, and dimensions shown hereon are based on coordinates from the "Colorado coordinate system of 1983 central zone" (article 52 of title 38, C.R.S.).
- 3.) All section line dimensions shown hereon are based on field measurements of existing monuments and/or physical evidence found in the field unless otherwise indicated.
- 4.) Physical features shown hereon are for graphical representation only.
- 5.) See Form 2A for visible improvements within 400' of wellhead.
- 6.) Distances to nearest section lines are measured perpendicularly.
- 7.) This is not a land survey nor land survey plat.
- 8.) Date of Survey 7/28/08; Date of Drawing 6/28/10. REV 1

PDOP Reading: 2.4 Instrument Operator: EJJ

GEO SURV
LAND SURVEYING AND MAPPING
520 STACY COURT SUITE "B"
LAFAYETTE, CO. 80026
Ph 303 666 0379 Fx 303 665 6320

OXY USA, INC
UTE WATER FEDERAL 27-13A
SL NE1/4 SW1/4 SEC. 27 T9S R94W
BH SW1/4 SW1/4 SEC. 27 T9S R94W
6th PM MESA COUNTY COLORADO

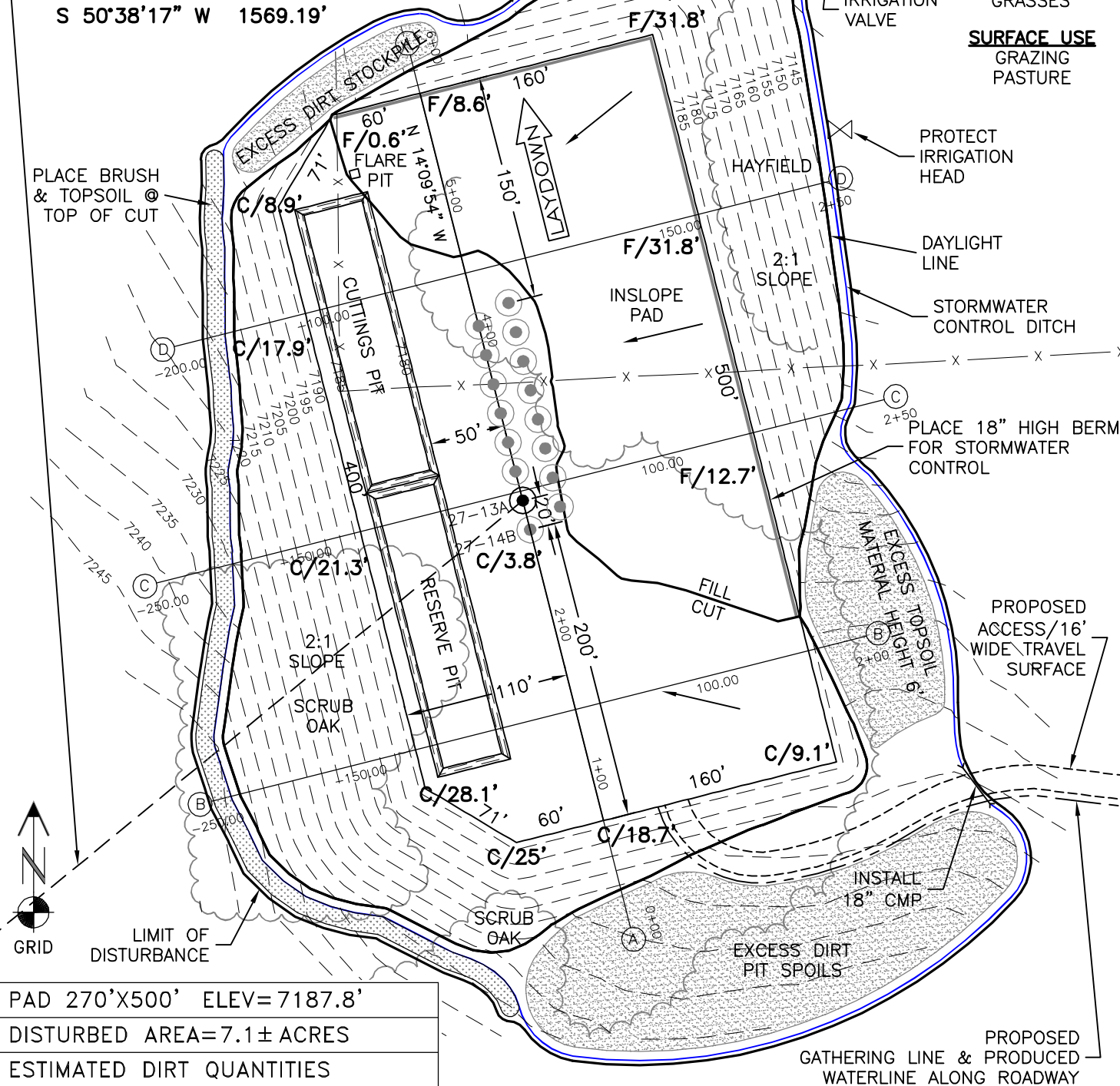
PAD LAYOUT

UTE WATER
27-11 PAD

PROPOSED DIRECTIONAL ALIGNMENT
UTE WATER FEDERAL 27-13A
S 50°38'17" W 1569.19'

VEGETATION
SCRUB BRUSH,
MOUNTAIN SHRUBS,
GRASSES

SURFACE USE
GRAZING
PASTURE



PAD 270'X500' ELEV=7187.8'				
DISTURBED AREA=7.1± ACRES				
ESTIMATED DIRT QUANTITIES				
CUTx10%	FILL	PIT	TOPSOIL	EXCESS
54,920	46,160	6,970	8,320	1,790

NOTE: VOLUMES IN CUBIC YARDS. TOPSOIL INCLUDED IN VOLUMES AT A DEPTH OF 12". PIT NOT INCLUDED IN TOTAL EXCESS.

NOTES:

- 1) 10% ALLOWANCE IS MADE FOR SOIL EXPANSION.
- 2) PIT LOCATION & SIZE TO BE DETERMINED AT TIME OF CONSTRUCTION.

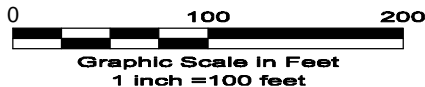


**GEO
SURV**

LAND SURVEYING AND MAPPING
LAFAYETTE - WINTER PARK
Ph 303 666 0379 Fx 303 665 6320

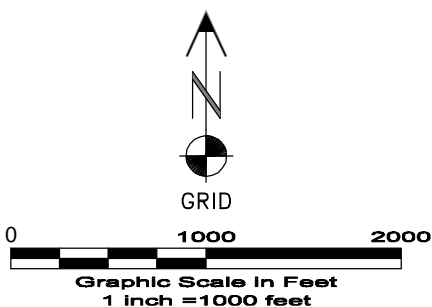
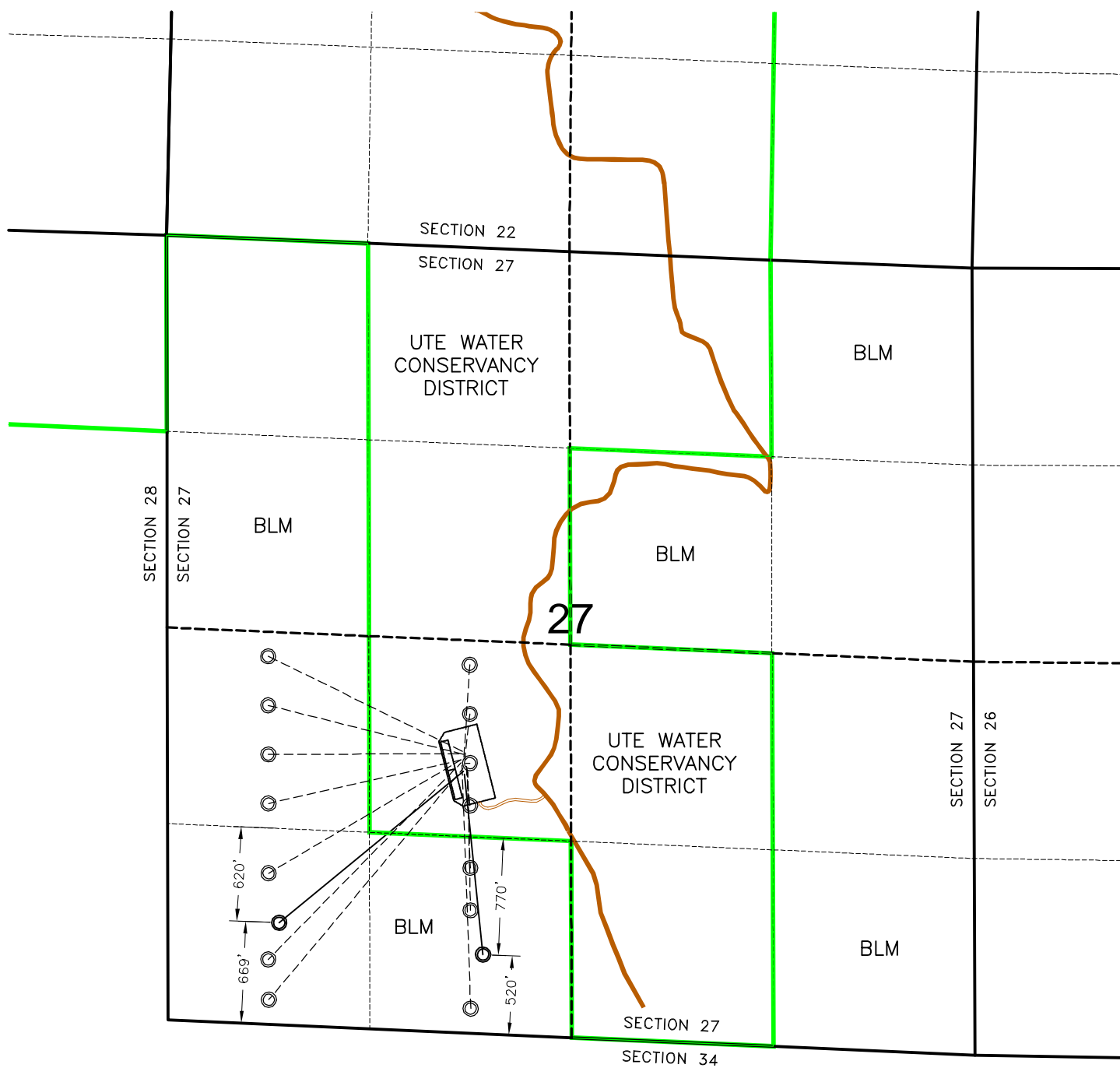
OXY USA, INC
UTE WATER FEDERAL 27-13A

SL NE1/4 SW1/4 SEC. 27 T9S R94W
BH SW1/4 SW1/4 SEC. 27 T9S R94W
6th PM MESA COUNTY COLORADO



BOTTOM HOLE SCHEMATIC

UTE WATER
27-11 PAD



— PROPERTY LINE
○ PROPOSED BOTTOM HOLE

GEO SURV
LAND SURVEYING AND MAPPING
LAFAYETTE - WINTER PARK
Ph 303 666 0379 Fx 303 665 6320

OXY USA, INC
UTE WATER 27-11 PAD

SECTION 27 T9S R94W 6th PM
MESA COUNTY COLORADO