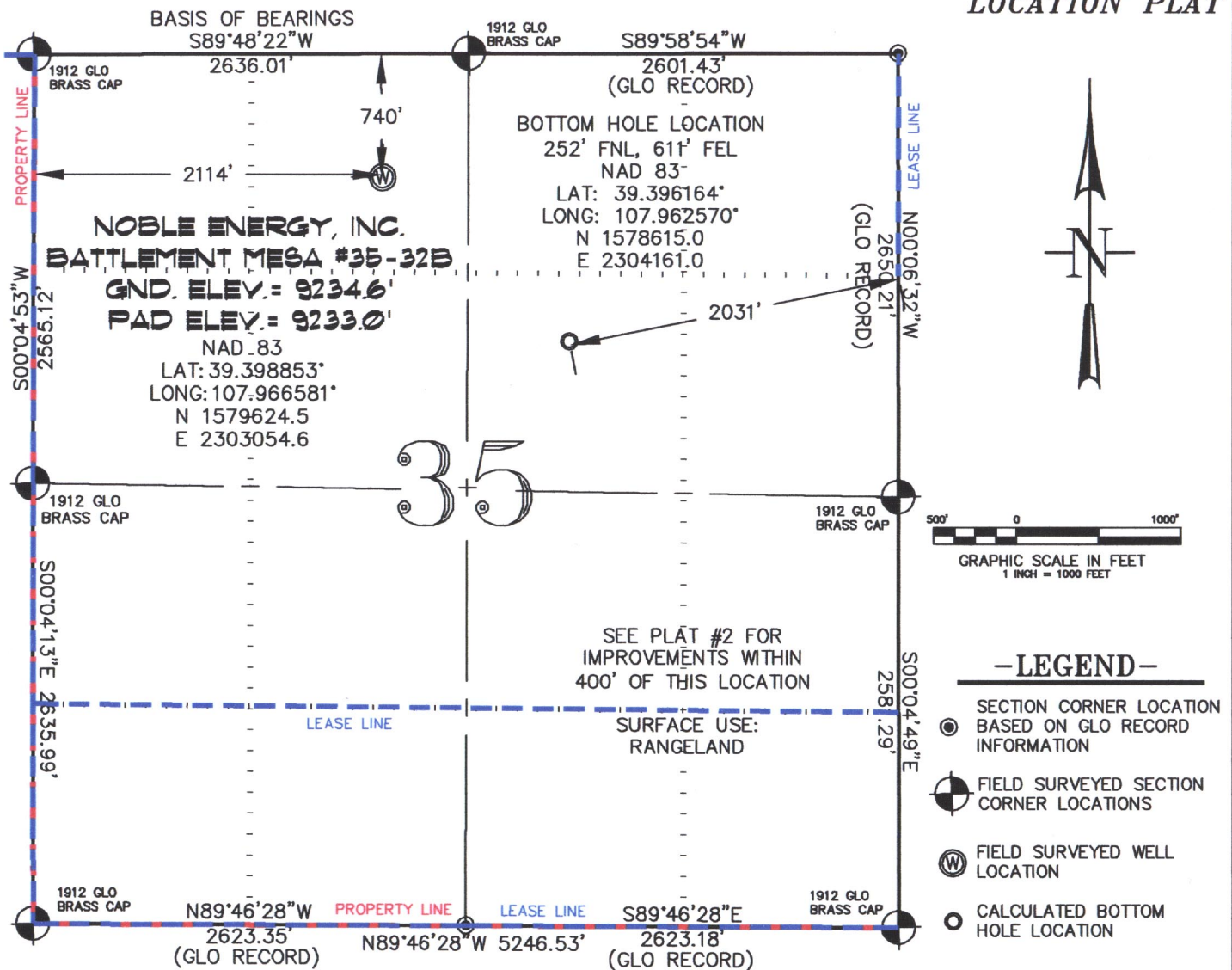


SEC. 35, T. 7 S., R. 95 W. OF THE 6TH P.M.

PLAT #1  
LOCATION PLAT



**THIS WELL LOCATION PLAT WAS PREPARED FOR NOBLE ENERGY INC. TO LOCATE THE BATTLEMENT MESA #35-32B WELL, 740 FEET FROM THE NORTH LINE AND 2114 FEET FROM THE WEST LINE IN THE NE1/4 NW1/4 OF SECTION 35, T. 7 S., R. 95 W. OF THE 6TH P.M. GARFIELD COUNTY, COLORADO.**

**REFERENCE NOTES**

- 1) T. 7 S., R. 95 W., 6TH P.M. GLO PLAT.
- 2) U.S.G.S. QUAD: PARACHUTE, CO
- 3) ELEVATIONS BASED ON N.A.V.D. 1988
- 4) LATITUDES AND LONGITUDES ARE BASED ON NAD 83, COLORADO CENTRAL ZONE.
- 5) GPS OPERATOR ROBERT WOOD, OBSERVED A PDOP OF 2.0.
- 6) ALL GPS OBSERVATIONS ARE IN COMPLIANCE WITH COGCC RULE NO. 215.
- 7) SURFACE AND BOTTOM HOLE LOCATIONS ARE MEASURED 90° FROM SECTION LINES.

**SURVEYOR'S CERTIFICATE**

I, George R. Bauer: a Professional Land Surveyor in the State of Colorado do hereby certify that this Survey was made under my direct supervision, and that this Plat represents said Survey.



COLORADO P.L.S. 27925



**CONSTRUCTION SURVEYS, INC.**  
**0012 SUNRISE BLVD.**  
**SILT, CO 81652**  
**(970)876-5753**

VIEW: 1K

SURVEYED: 08/20/09	SCALE: 1" = 1000'
DRAFTED: 12/04/09	DWG: Noble\2006\BM35C
CHECKED: 12/07/09	SHEET: 1 of 10