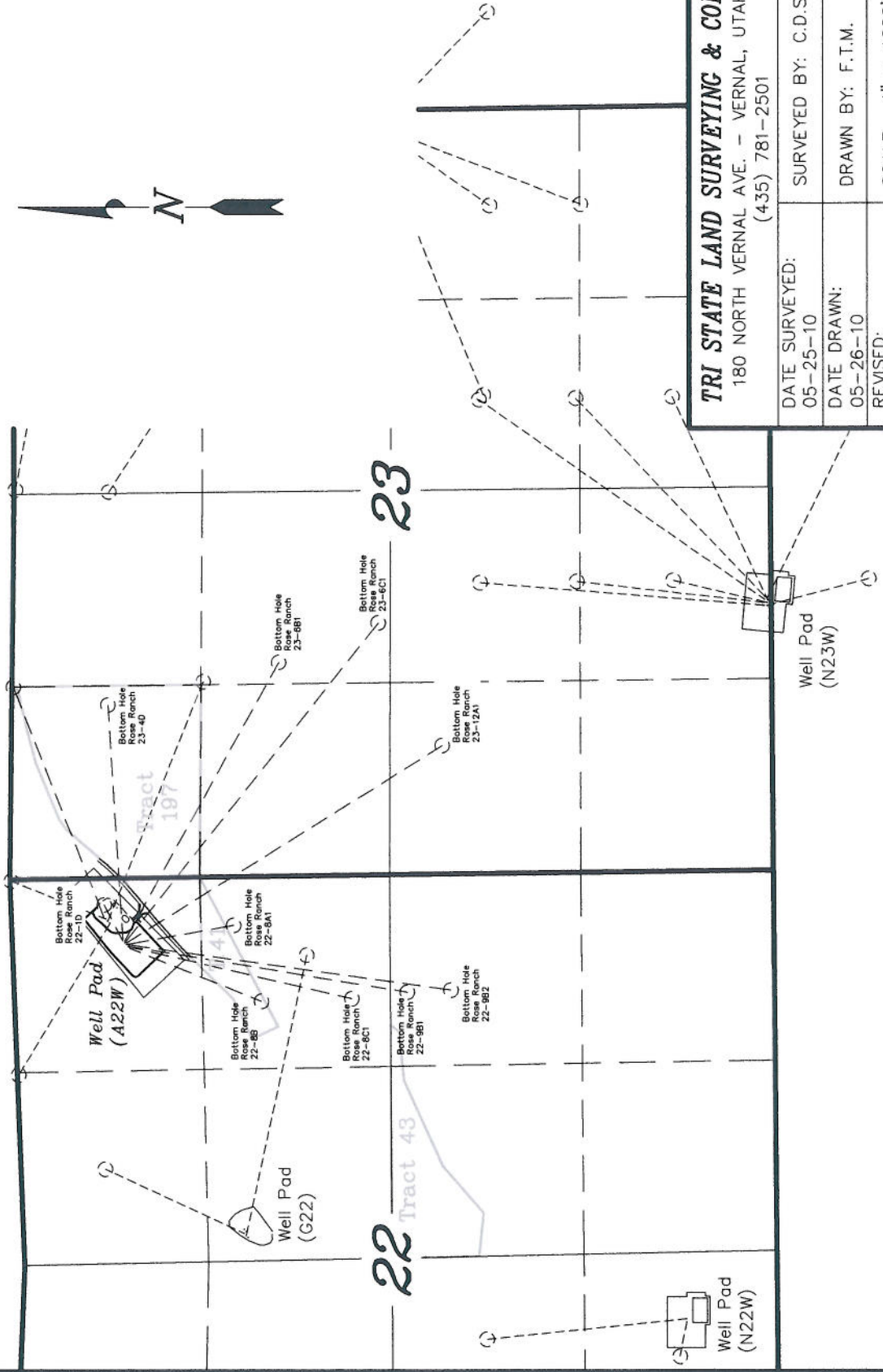


T7S, R93W, 6th P.M.

ENCANA OIL & GAS (USA) INC

**GENERAL MULTI WELL PLAN
SECTION DRILLING MAP
WELL PAD (A22W) EXPANSION**

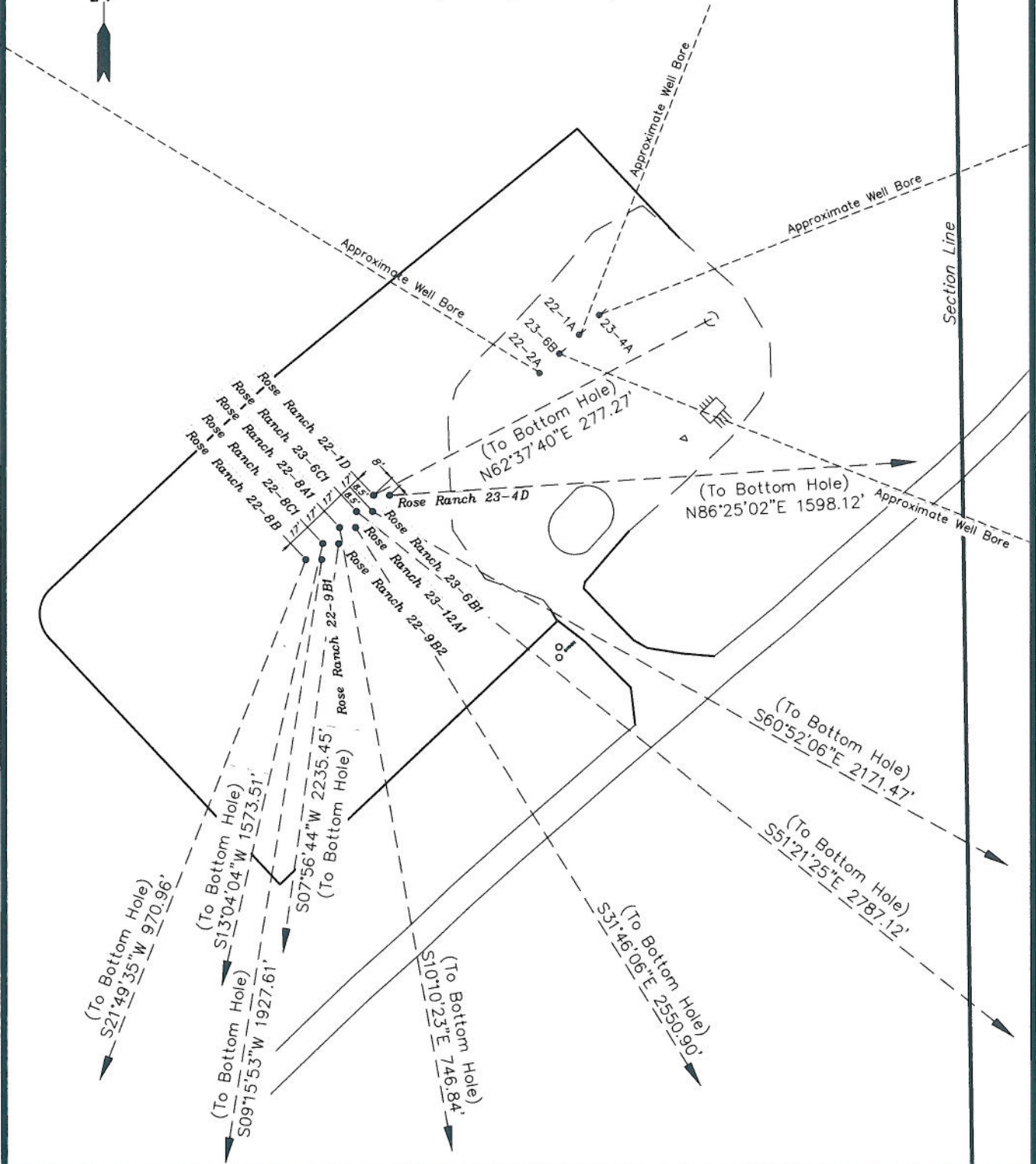


TRI STATE LAND SURVEYING & CONSULTING
180 NORTH VERNAL AVE. - VERNAL, UTAH 84078
(435) 781-2501

DATE SURVEYED: 05-25-10	SURVEYED BY: C.D.S.	SHEET 1 OF 11
DATE DRAWN: 05-26-10	DRAWN BY: F.T.M.	
REVISED: R.V.C. 06-22-10	SCALE: 1" = 1000'	

ENCANA OIL & GAS (USA) INC

DETAILED MULTI WELL PLAN WELL PAD INTERFERENCE PLAT WELL PAD (A22W) EXPANSION Section 22, T7S, R93W, 6th P.M.



SURVEYED BY: C.D.S.	DATE SURVEYED: 05-25-10
DRAWN BY: L.C.S./F.T.M.	DATE DRAWN: 05-26-10
SCALE: 1" = 100'	REVISED: R.V.C. 06-22-10

Tri State (435) 781-2501
 Land Surveying, Inc.
 180 NORTH VERNAL AVE. VERNAL, UTAH 84078

SHEET
3a
 OF 11

ENCANA OIL & GAS (USA) INC

DETAILED MULTI WELL PLAN WELL PAD INTERFERENCE PLAT WELL PAD (A22W) EXPANSION Section 22, T7S, R93W, 6th P.M.

TOP HOLE FOOTAGES

Rose Ranch 23-4D (A22W)
759' FNL & 416' FEL

Rose Ranch 22-1D (A22W)
758' FNL & 428' FEL

Rose Ranch 23-6B1 (A22W)
770' FNL & 429' FEL

Rose Ranch 23-6C1 (A22W)
769' FNL & 440' FEL

Rose Ranch 23-12A1 (A22W)
781' FNL & 441' FEL

Rose Ranch 22-8A1 (A22W)
780' FNL & 453' FEL

Rose Ranch 22-9B2 (A22W)
792' FNL & 454' FEL

Rose Ranch 22-8C1 (A22W)
792' FNL & 465' FEL

Rose Ranch 22-9B1 (A22W)
792' FNL & 465' FEL

Rose Ranch 22-8B (A22W)
803' FNL & 478' FEL

BOTTOM HOLE FOOTAGES

Rose Ranch 23-4D (A22W)
660' FNL & 1180' FWL

Rose Ranch 22-1D (A22W)
640' FNL & 180' FEL

Rose Ranch 23-6B1 (A22W)
1825' FNL & 1455' FWL

Rose Ranch 23-6C1 (A22W)
2505' FNL & 1715' FWL

Rose Ranch 23-12A1 (A22W)
2245' FSL & 875' FWL

Rose Ranch 22-8A1 (A22W)
1520' FNL & 330' FEL

Rose Ranch 22-9B2 (A22W)
2200' FSL & 790' FEL

Rose Ranch 22-8C1 (A22W)
2310' FNL & 840' FEL

Rose Ranch 22-9B1 (A22W)
2500' FSL & 800' FEL

Rose Ranch 22-8B (A22W)
1690' FNL & 850' FEL

Note:

Bearings are based on G.P.S. observations.

RELATIVE COORDINATES From top hole to bottom hole

WELL	NORTH	EAST
23-4D	100'	1595'
22-1D	127'	246'
23-6B1	-1057'	1897'
23-6C1	-1740'	2177'
23-12A1	-2169'	1343'
22-8A1	-735'	132'
22-9B2	-2214'	-309'
22-8C1	-1533'	-356'
22-9B1	-1902'	-310'
22-8B	-901'	-361'

LATITUDE & LONGITUDE Existing position (NAD 83)

WELL	LATITUDE	LONGITUDE
23-4A	39° 26' 12.19"	107° 45' 08.09"
22-1A	39° 26' 12.05"	107° 45' 08.28"
23-6B	39° 26' 11.91"	107° 45' 08.46"
22-2A	39° 26' 11.77"	107° 45' 08.64"

LATITUDE & LONGITUDE Top of Hole position (NAD 83)

WELL	LATITUDE	LONGITUDE
23-4D	39° 26' 10.90"	107° 45' 09.97"
22-1D	39° 26' 10.90"	107° 45' 10.12"
23-6B1	39° 26' 10.78"	107° 45' 10.12"
23-6C1	39° 26' 10.78"	107° 45' 10.27"
23-12A1	39° 26' 10.67"	107° 45' 10.28"
22-8A1	39° 26' 10.67"	107° 45' 10.43"
22-9B2	39° 26' 10.55"	107° 45' 10.44"
22-8C1	39° 26' 10.55"	107° 45' 10.59"
22-9B1	39° 26' 10.44"	107° 45' 10.60"
22-8B	39° 26' 10.44"	107° 45' 10.75"

LATITUDE & LONGITUDE Bottom of Hole position (NAD 83)

WELL	LATITUDE	LONGITUDE
23-4D	39° 26' 11.88"	107° 44' 49.64"
22-1D	39° 26' 12.16"	107° 45' 06.98"
23-6B1	39° 26' 00.33"	107° 44' 45.96"
23-6C1	39° 25' 53.58"	107° 44' 42.55"
23-12A1	39° 25' 49.23"	107° 44' 53.18"
22-8A1	39° 26' 03.40"	107° 45' 08.75"
22-9B2	39° 25' 48.68"	107° 45' 14.39"
22-8C1	39° 25' 55.41"	107° 45' 15.13"
22-9B1	39° 25' 51.64"	107° 45' 14.56"
22-8B	39° 26' 01.53"	107° 45' 15.35"

SURVEYED BY: C.D.S. DATE SURVEYED: 05-25-10
 DRAWN BY: F.T.M. DATE DRAWN: 05-26-10
 SCALE: 1" = 100' REVISED: R.V.C. 06-22-10

Tri State (435) 781-2501
 Land Surveying, Inc.
 180 NORTH VERNAL AVE. VERNAL, UTAH 84078

SHEET
3b
 OF 11