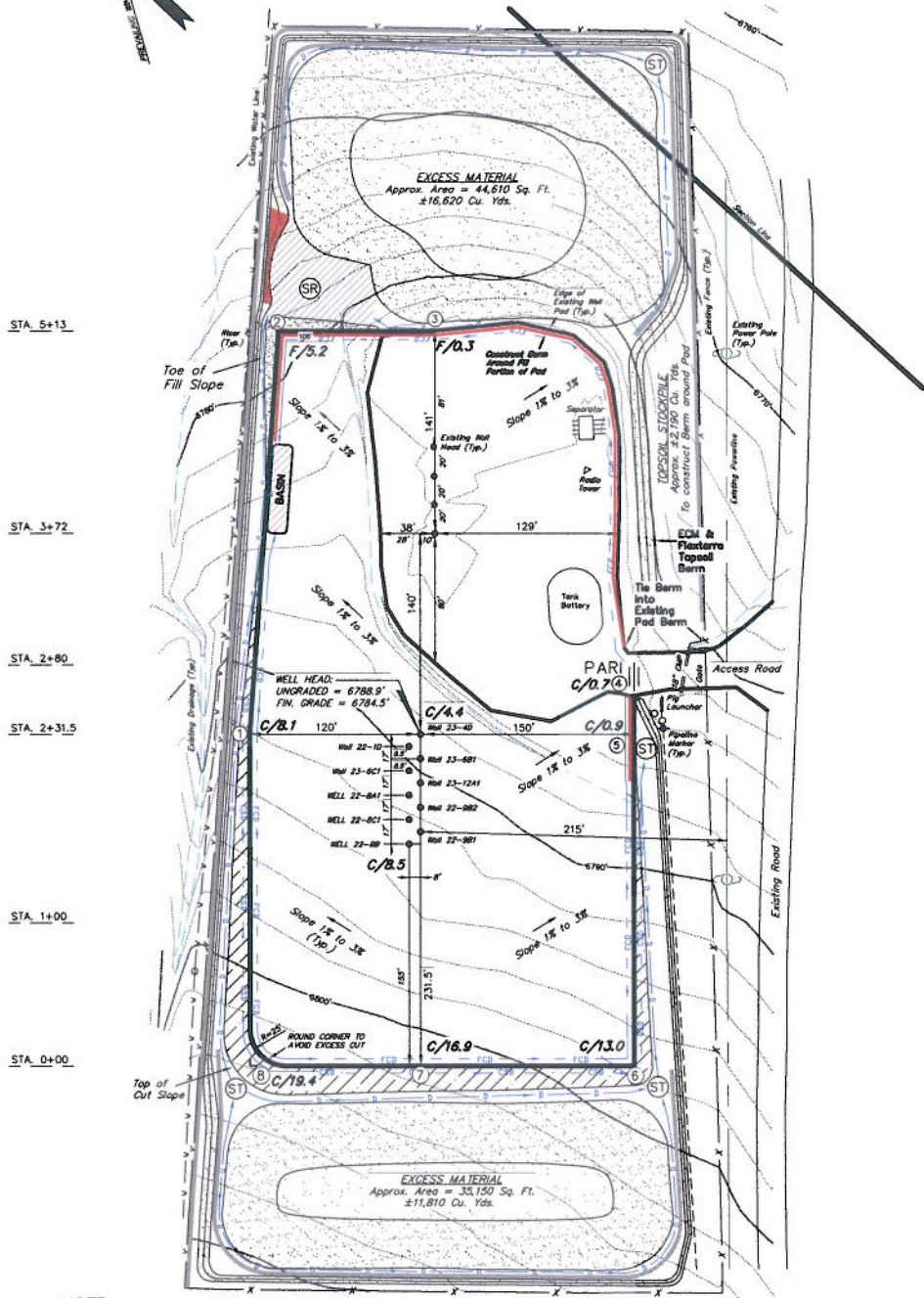


# ENCANA OIL & GAS (USA) INC

## CONSTRUCTION LAYOUT DRAWING CUT SHEET

### WELL PAD (A22W) EXPANSION Section 22, T7S, R93W, 6th P.M.



**NOTE:**  
The topsoil & excess material area is calculated as being mounds containing 30,620 cubic yards of dirt (a 15% fluff factor is included). The mound areas are calculated with push slopes of 2.5:1 & fall slopes of 2.5:1.

**NOTES:**

- (1) Slope Track and/or Terrace All Slopes and Piles
- (2) Erosion Control & Seed Topsoil Stockpile
- (3) Erosion Control & Seed Outside Slopes of Stockpiles
- (4) Slope away from Substructure Areas 1% to 3% to Flow Control Ditch on Entire Pad
- (5) When Possible the Cut and Fill Slopes Directly Behind the Proposed Production Equipment Should be Reclaimed with 3:1 Slopes and Topsoil Spread During Pad Construction.
- (6) BMP Selection and Position may Change Depending on Actual Conditions Encountered During the Construction Process.
- (7) All BMP's Shall have Inlet and Outlet Protection.
- (8) All BMP's to be constructed to Encana Oil & Gas (USA) Inc. BMP Manual's Specifications

**LEGEND:**

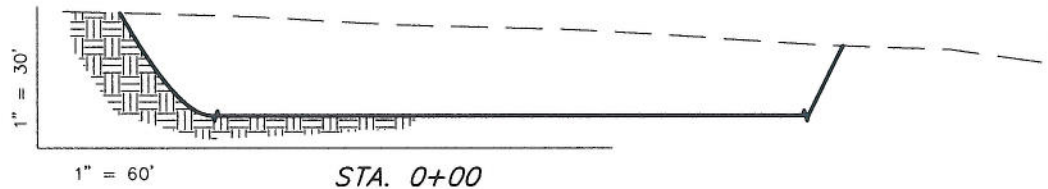
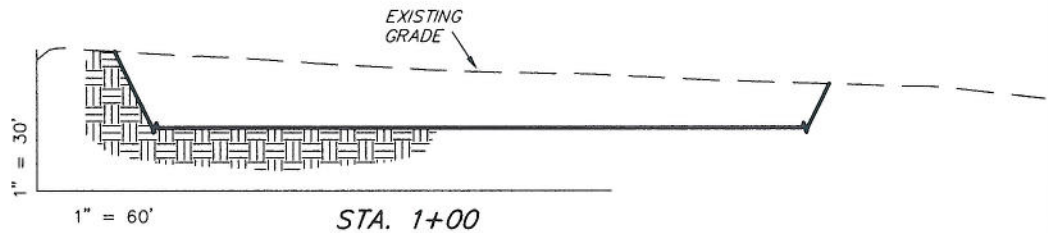
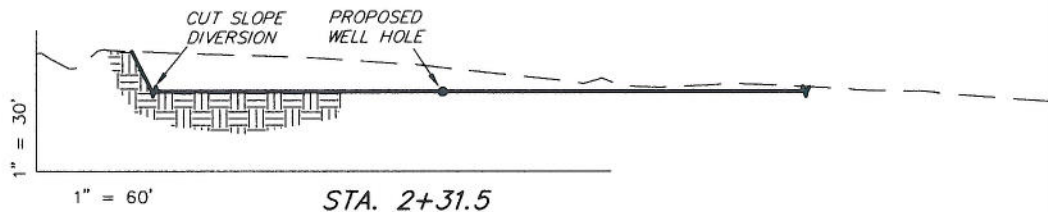
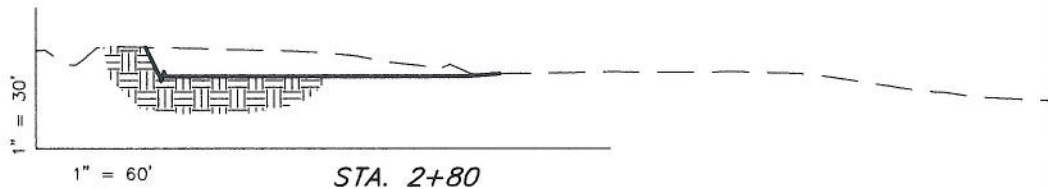
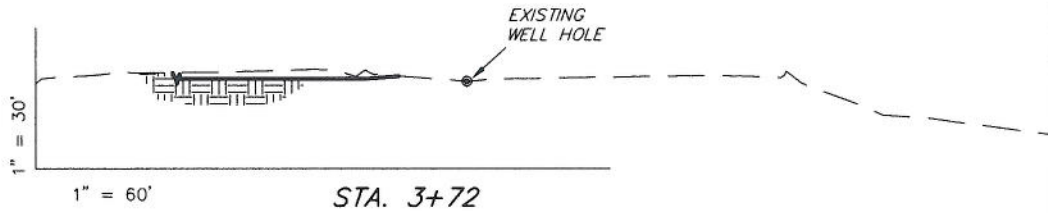
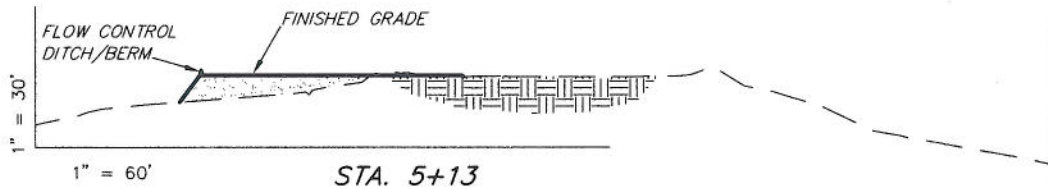
- PARI = PAD/ACCESS ROAD INTERFACE
- SR = SEDIMENT RESERVOIR
- ST = SEDIMENT TRAP
- R.O.P. = RUN-ON PROTECTION
- = PERIMETER CONTROL (WATTLES)
- CDM = CHECK DAM
- FCD = FLOW CONTROL DITCH
- ECB = EROSION CONTROL BLANKET
- D = FILL DIVERSION TO SEDIMENT TRAP
- CSD = CUT SLOPE DIVERSION (BERM TOE OF CUT SLOPE)
- VCB = VEGETATION BUFFER (UNDISTURBED LAND INSIDE FC)
- = SEED, ECB & FLEX
- = LEVEL SPREADER

SURVEYED BY: C.D.S.	DATE SURVEYED: 08-16-07
DRAWN BY: F.T.M.	DATE DRAWN: 08-17-07
SCALE: 1" = 100'	REVISED: R.V.C. 06-22-10

**Tri State Land Surveying, Inc.** (435) 781-2501  
180 NORTH VERNAL AVE. VERNAL, UTAH 84078

# ENCANA OIL & GAS (USA) INC

## CONSTRUCTION LAYOUT DRAWING CROSS SECTIONS WELL PAD (A22W) EXPANSION



NOTE:  
UNLESS OTHERWISE NOTED  
CUT SLOPES ARE AT 1:1  
FILL SLOPES ARE AT 1.5:1

ESTIMATED EARTHWORK QUANTITIES (No Shrink or swell adjustments have been used) (Expressed in Cubic Yards)				
ITEM	CUT	FILL	EXCESS	6" TOPSOIL
PAD	25,550	830	24,720	Topsoil is not included in Pad Cut
TOTALS	25,550	830	24,720	1,900

SURVEYED BY: C.D.S.      DATE SURVEYED: 08-16-07  
DRAWN BY: F.T.M.      DATE DRAWN: 08-17-07  
SCALE: 1" = 60'      REVISED: R.V.C. 06-22-10

**Tri State**  
Land Surveying, Inc.  
180 NORTH VERNAL AVE.      VERNAL, UTAH 84078

(435) 781-2501

SHEET  
**5**  
OF 11

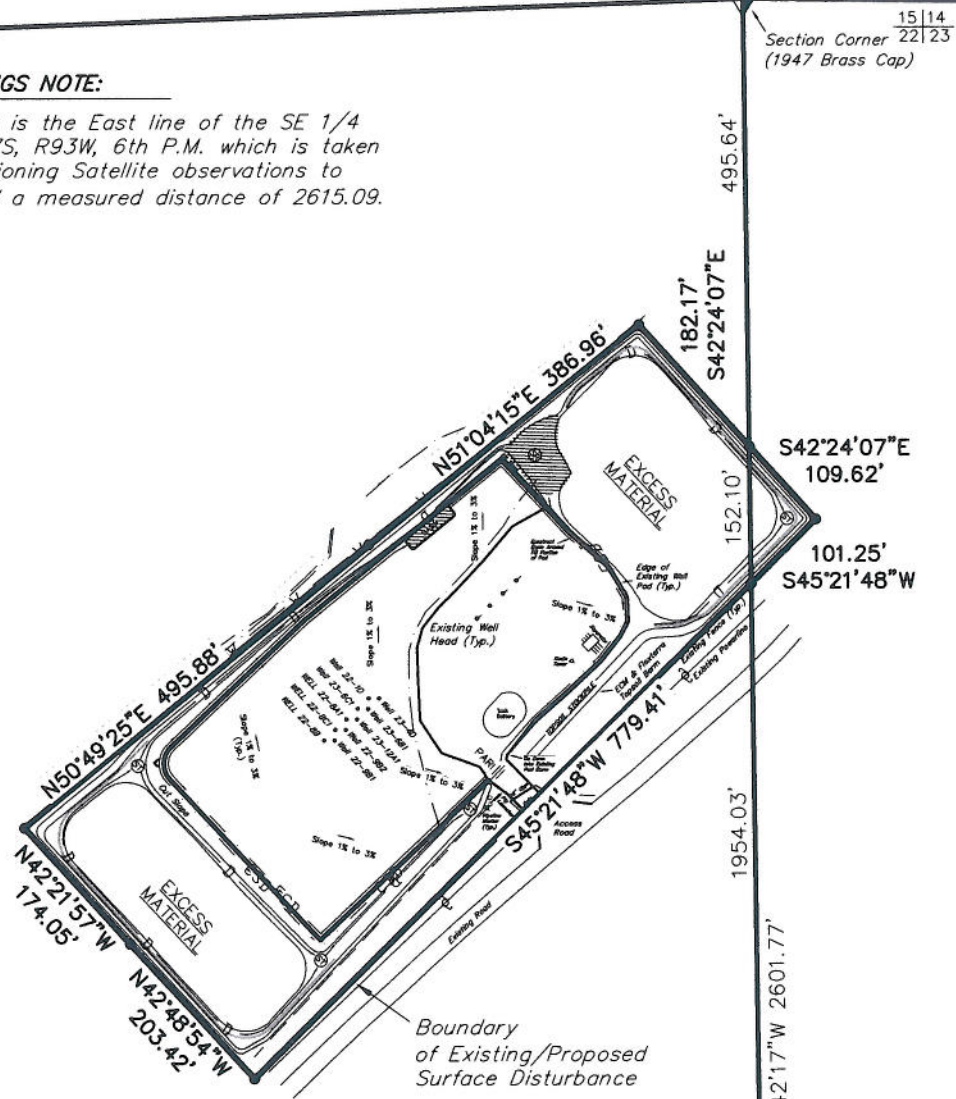
# ENCANA OIL & GAS (USA) INC

## SURFACE DISTURBANCE AREA WELL PAD (A22W) EXPANSION Section 22, T7S, R93W, 6th P.M.



**BASIS OF BEARINGS NOTE:**

Basis of Bearings is the East line of the SE 1/4 of Section 22, T7S, R93W, 6th P.M. which is taken from Global Positioning Satellite observations to bear N00°42'47"W a measured distance of 2615.09.



Surface Disturbance Area			
SURFACE OWNERSHIP	PROPOSED	EXISTING	TOTAL
Section 22	5.67 Acres	1.00 Acres	6.67 Acres
Section 23	0.13 Acres	0.00 Acres	0.13 Acres
<b>TOTAL PAD DISTURBANCE</b>	<b>5.80 Acres</b>	<b>1.00 Acres</b>	<b>6.80 Acres</b>

SURVEYED BY: C.D.S.	DATE SURVEYED: 05-25-10
DRAWN BY: F.T.M.	DATE DRAWN: 05-26-10
SCALE: 1" = 200'	REVISED: R.V.C. 06-22-10

**Tri State**  
Land Surveying, Inc.  
180 NORTH VERNAL AVE. VERNAL, UTAH 84078

(435) 781-2501

SHEET  
**8**  
OF 11