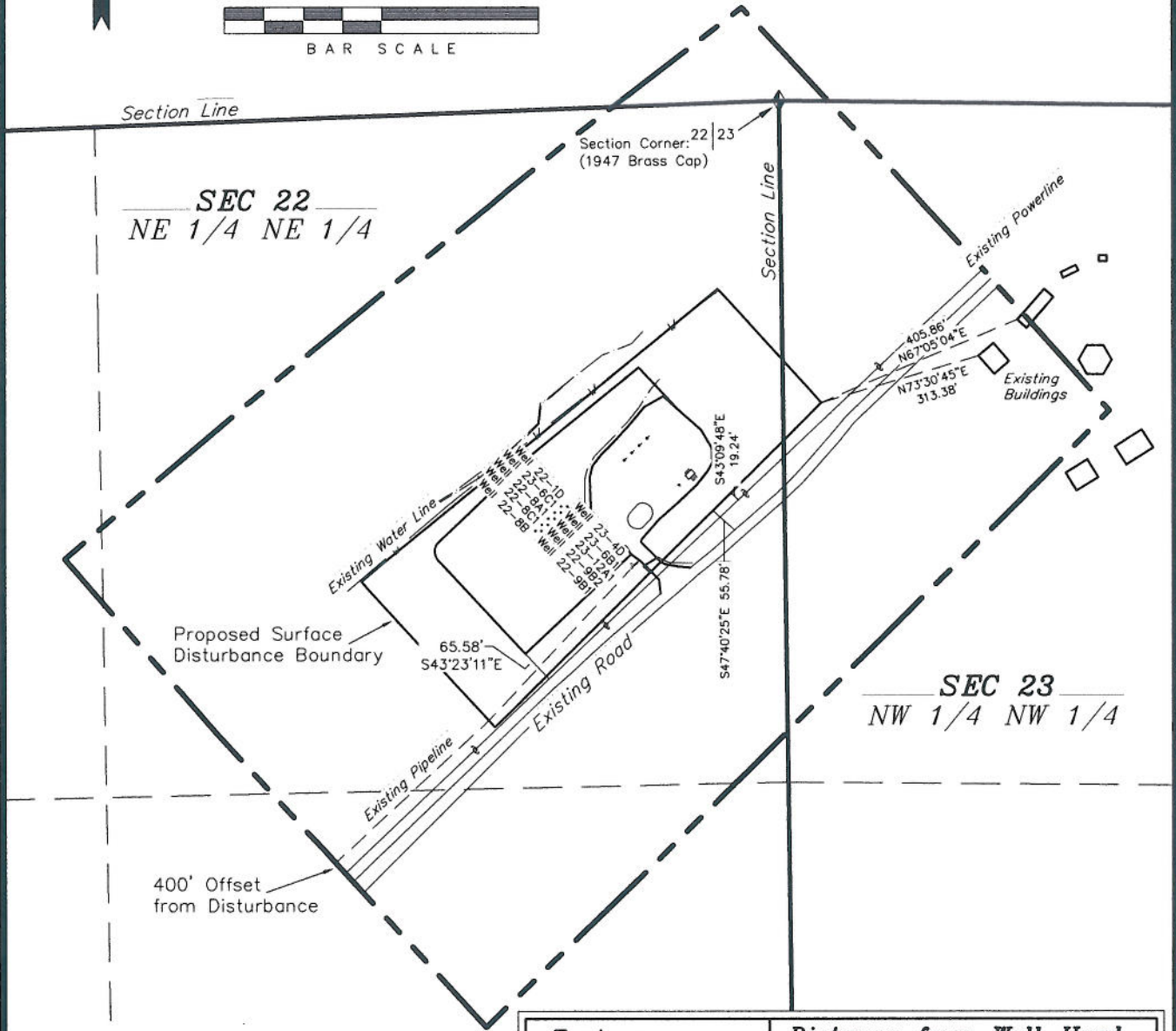
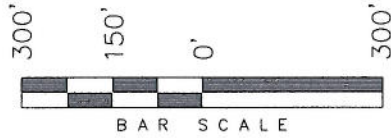


# ENCANA OIL & GAS (USA) INC

## LOCATION DRAWING ADDENDUM TO LEGAL PLATS WELL PAD (A22W) EXPANSION Section 22, T7S, R93W, 6th P.M.



**SURFACE USE NOTE:**  
Surface use of the well site is grazing. Vegetation consists mainly of Sage Brush & Native Grasses.

Feature	Distance from Well Head
Building	850'
Above Ground Utility	215'
Public Road	242'
Railroad	6.6 Miles

SURVEYED BY: C.D.S.      DATE SURVEYED: 05-25-10  
 DRAWN BY: F.T.M.      DATE DRAWN: 06-04-10  
 SCALE: 1" = 300'      REVISED: R.V.C. 06-22-10

**Tri State**  
 Land Surveying, Inc.  
 180 NORTH VERNAL AVE.      VERNAL, UTAH 84078      (435) 781-2501

SHEET  
 2k  
 OF 11