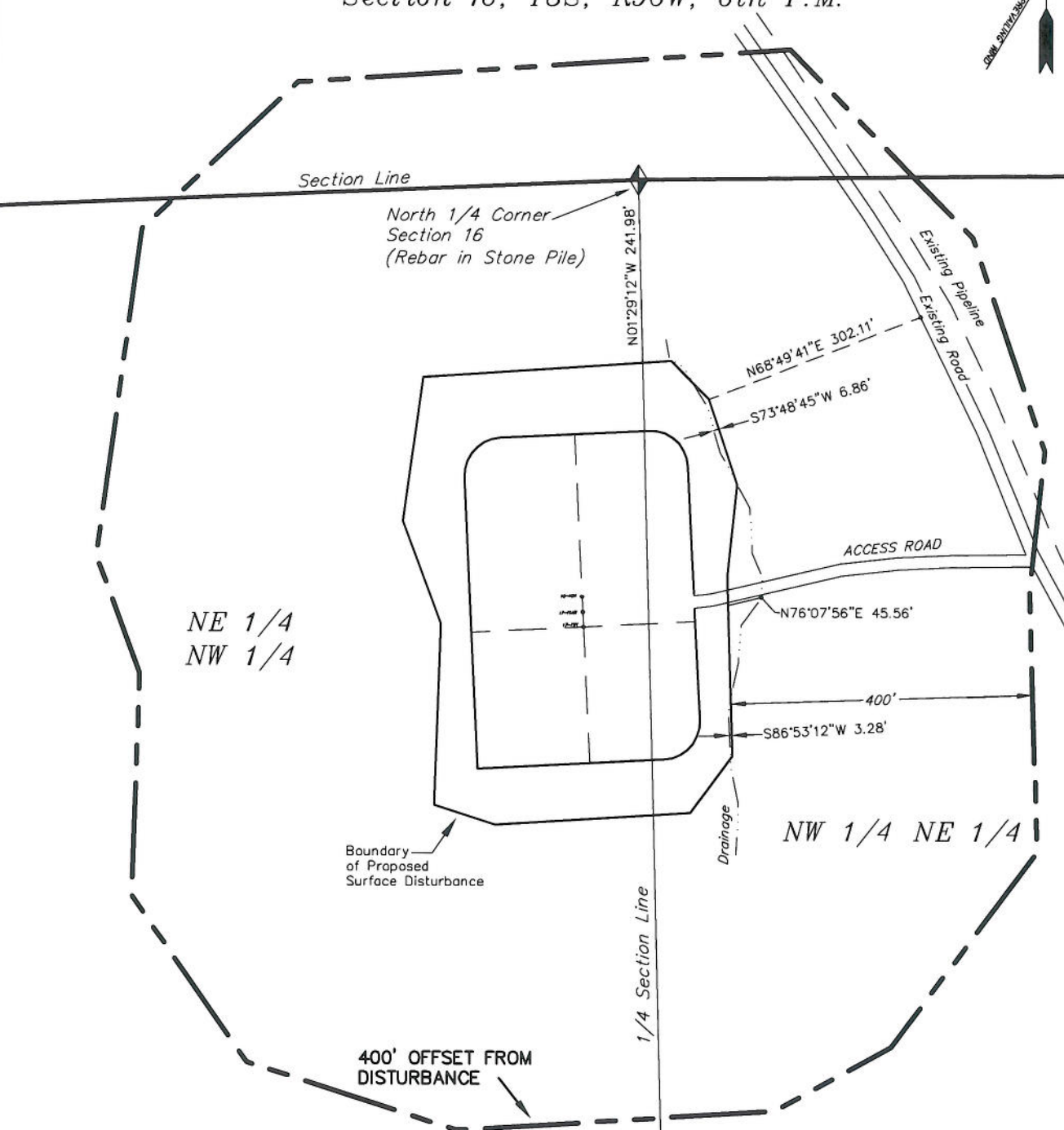


LOCATION DRAWING
ADDENDUM TO LEGAL PLATS FOR
WELL PAD (C160U)
Section 16, T8S, R96W, 6th P.M.



| <i>Feature</i> | <i>Distance from well head</i> |
|----------------------|--------------------------------|
| Building | 5,990' |
| Above Ground Utility | 3,640' |
| Public Road | 2,450 |
| Railroad | 2.0 Miles |

A horizontal bar scale with alternating black and white segments. Above the bar, the numbers 200', 100', 0, 100, and 200 are marked from left to right. Below the bar, the words 'BAR' and 'SCALE' are printed.

Sec. 16

| | |
|---------------------|--------------------------|
| SURVEYED BY: C.D.S. | DATE SURVEYED: 06-25-10 |
| DRAWN BY: F.T.M. | DATE DRAWN: 06-14-10 |
| SCALE: 1" = 200' | REVISED: 06-28-10 L.C.S. |

Tri State (43)
Land Surveying, Inc.
180 NORTH VERNAL AVE. VERNAL, UTAH 84078

(435) 781-2501

SHEET
2d
OF 11