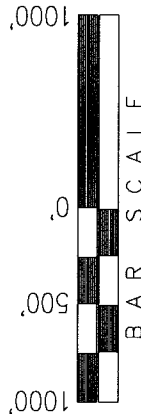



EXXON MOBIL CORPORATION

WELL LOCATION, FREEDOM UNIT 297-20B3,
LOCATED AS SHOWN IN THE NW 1/4 NW 1/4
OF SECTION 20, T2S, R97W, 6th P.M. RIO
BLANCO COUNTY, COLORADO.



 = SECTION CORNERS LOCATED

BASIS OF BEARINGS & BASIS OF ELEVATION

BASIS OF BEARINGS IS A LINE BETWEEN MAGNOLIA & MEYERS TRIANGULATION STATION GRID COORDINATES WHICH IS ASSUMED TO BEAR S82°36'07"E.

BASIS OF ELEVATION IS MAGNOLIA TRIANGULATION STATION LOCATED IN THE
SECTION 9, T2S, R96W, 6th P.M. REPORTED FROM THE NATIONAL
GEODETIC SURVEY (NAVD 88). ELEVATION IS REPORTED AS BEING 7529 FEET

NOTES:

1. Well footages are measured at right angles to the Section Lines.
2. Bearings are based on Global Positioning Satellite observations.
3. The Bottom of Hole bears N88°04'38"E 532.15' from the Top of Hole.
4. G.P.S. Operator: T. PETTY, (PDOP) = 2.5

THIS IS TO CERTIFY THAT THE ABOVE STAFF DO REGULARLY PREPARED FROM FIELD NOTES OF ACTUAL SURVEYS MADE BY ME OR UNDER MY SUPERVISION AND THAT THE SAME ARE TRUE AND CORRECT TO THE BEST OF MY KNOWLEDGE AND BELIEF.

30125

REGISTERED LAND SURVEYOR
REGISTRATION NO. 1453
STATE OF COLORADO

TRI STATE LAND SURVEYING & CONSULTING

180 NORTH VERNAL AVE. - VERNAL, UTAH 84078
(435) 781-2501

DATE SURVEYED:

SURVEYED BY: T.P.

DATE DRAWN:

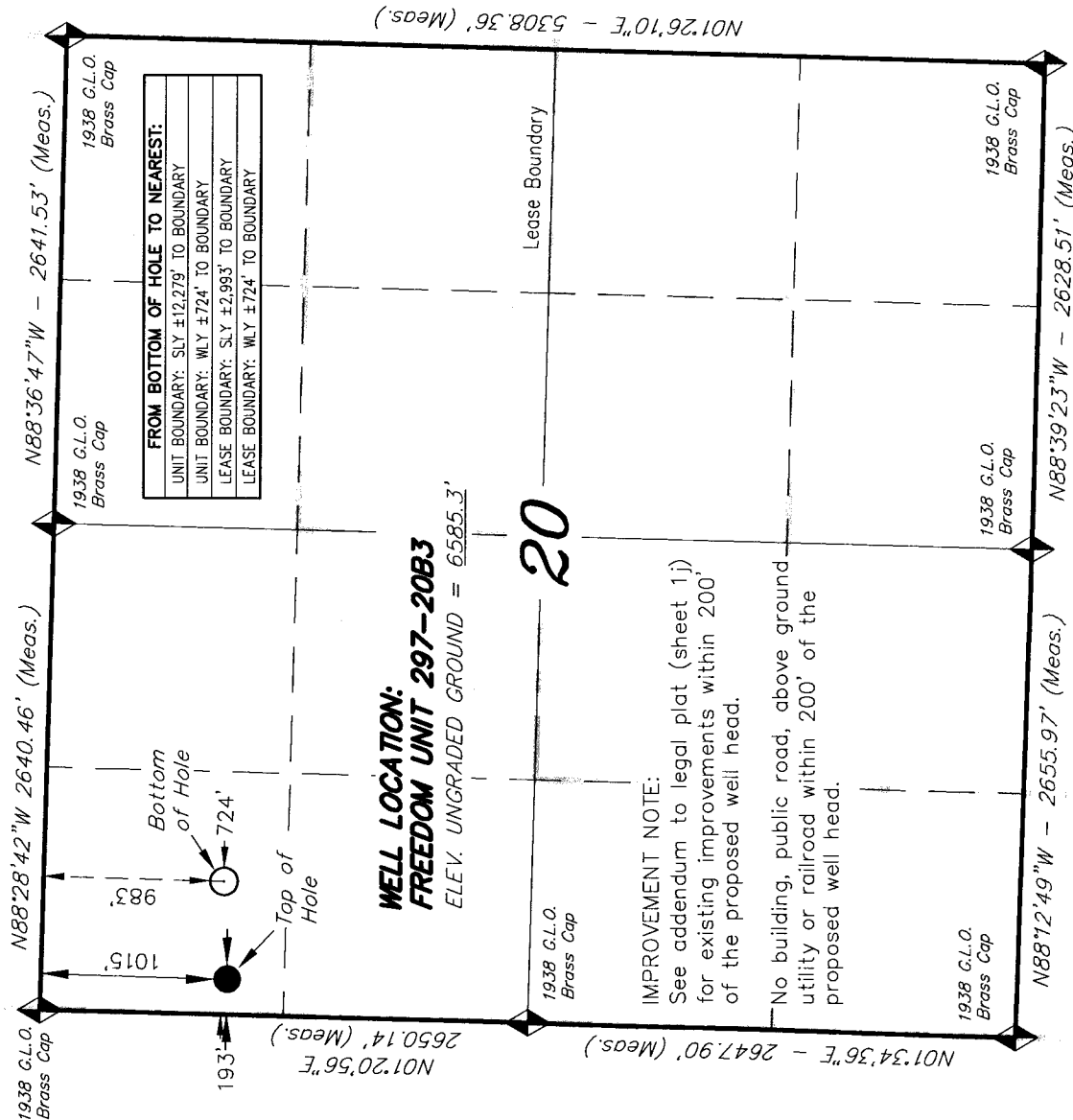
DRAWN BY: R.V.C.

REVISÉ:

REVISED: 08-22-06 D.COX

SCALE: 1" = 1000'

8
LE
O



CO-NORTH NAD 83 (SURFACE LOCATION)		CO-NORTH NAD 83 (BOTTOM HOLE)		FROM SURFACE LOCATION TO NEAREST:
LATITUDE = 39°51'58.98" (39.866382)		LATITUDE = 39°51'59.32" (39.866478)		TOWN/COMMUNITY: 24.3 MILES NE TO MEEKER
LONGITUDE = 108°18'52.55" (108.314597)		LONGITUDE = 108°18'45.74" (108.312706)		UNIT BOUNDARY: ±17,245' SLY TO BOUNDARY
STATE PLANE COORDINATES		STATE PLANE COORDINATES		UNIT BOUNDARY: ±193' WLY TO BOUNDARY
N: = 1206711.200	E: = 2210068.164	N: = 1206729.047	E: = 2210599.830	LEASE BOUNDARY: ±2,959' SLY TO BOUNDARY
CO-NORTH NAD 27 (SURFACE LOCATION)		CO-NORTH NAD 27 (BOTTOM HOLE)		LEASE BOUNDARY: ±193' WLY TO BOUNDARY
LATITUDE = 39°51'59.07" (39.866410)		LATITUDE = 39°51'59.42" (39.866505)		EXISTING WELL: ±4,548' SELY TO #1 BRENNEN
LONGITUDE = 108°18'50.23" (108.313954)		LONGITUDE = 108°18'43.43" (108.312063)		
STATE PLANE COORDINATES		STATE PLANE COORDINATES		
N: = 206712.150	E: = 1210228.341	N: = 206730.000	E: = 1210760.000	