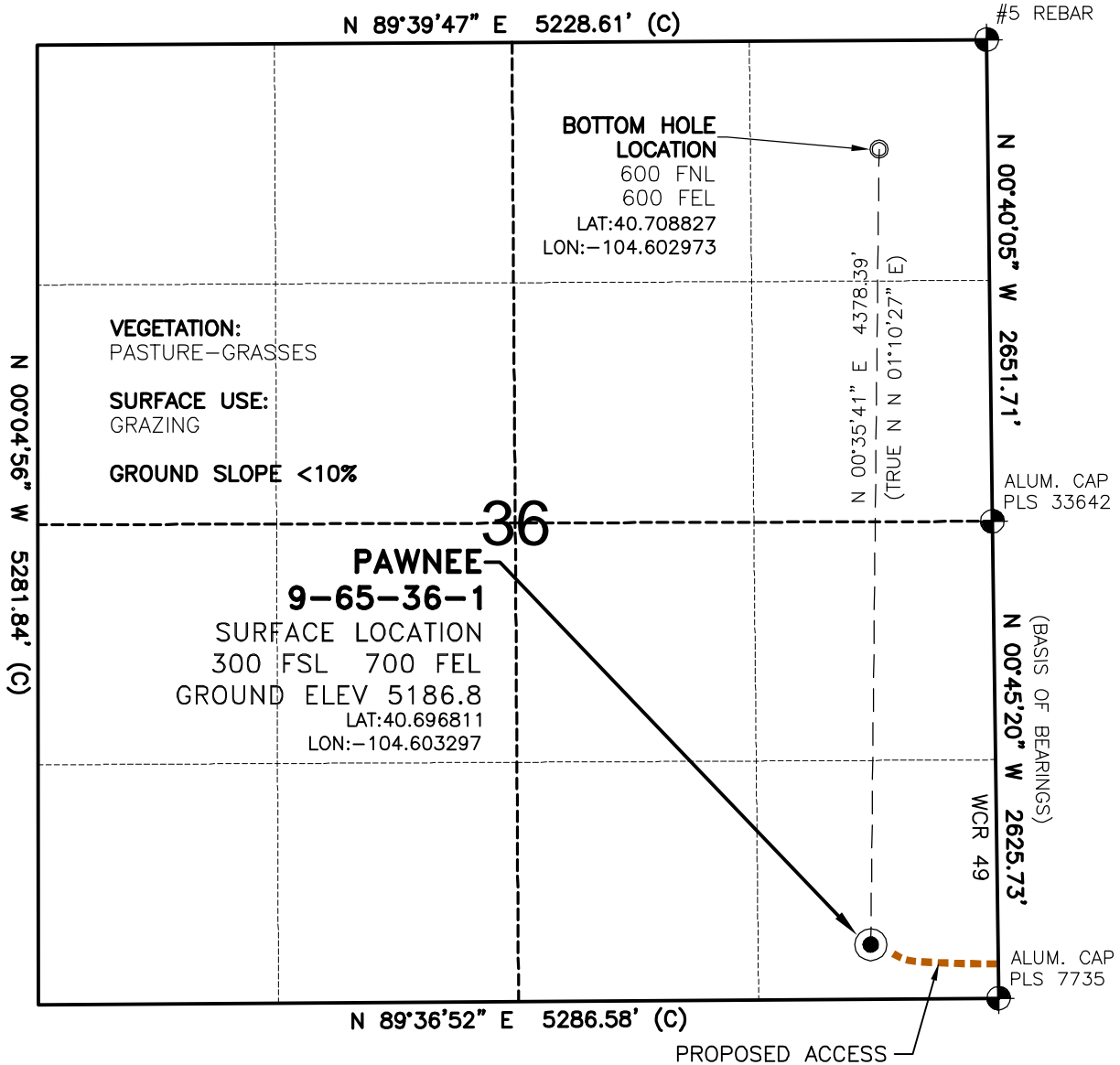


WELL LOCATION MAP

PAWNEE 9-65-36-1 PAD



SURVEYOR'S STATEMENT

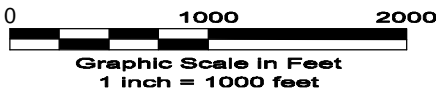
The undersigned hereby states that the well location shown hereon was staked on the ground based on existing monumentation and/or physical evidence found in the field and is correct to the best of my knowledge, information and belief.



NOTES

- 1.) Horizontal coordinates based on NGS control point "HORA" and vertical datum based on NGS control point "P 390" with an elevation of 5199.21. NAVD 1988.
 - 2.) All directions, distances, and dimensions shown hereon are based on coordinates from the "Colorado coordinate system of 1983 north zone" (article 52 of title 38, C.R.S.).
 - 3.) All section line dimensions shown hereon are based on field measurements of existing monuments and/or physical evidence found in the field unless otherwise indicated. Refer to land survey plats deposited in Weld County.
 - 4.) Physical features shown hereon are for graphical representation only.
 - 5.) See Form 2A for visible improvements within 400' of wellhead.
 - 6.) Distances to nearest section lines are measured perpendicularly.
 - 7.) This is not a land survey nor land survey plat.
 - 8.) Date of Survey 5/11/10; Date of Drawing 6/29/10. REV 0
- PDOP Reading: 1.9 Instrument Operator: DJM

6/29/10



GEO SURV

LAND SURVEYING AND MAPPING
LAFAYETTE - WINTER PARK
Ph 303 666 0379 Fx 303 665 6320

RUBICON OIL & GAS LLC
PAWNEE 9-65-36-1

SL SE1/4 SE1/4 SEC. 36 T9N R65W
BL NE1/4 NE1/4 SEC. 36 T9N R65W
6th PM WELD COUNTY COLORADO