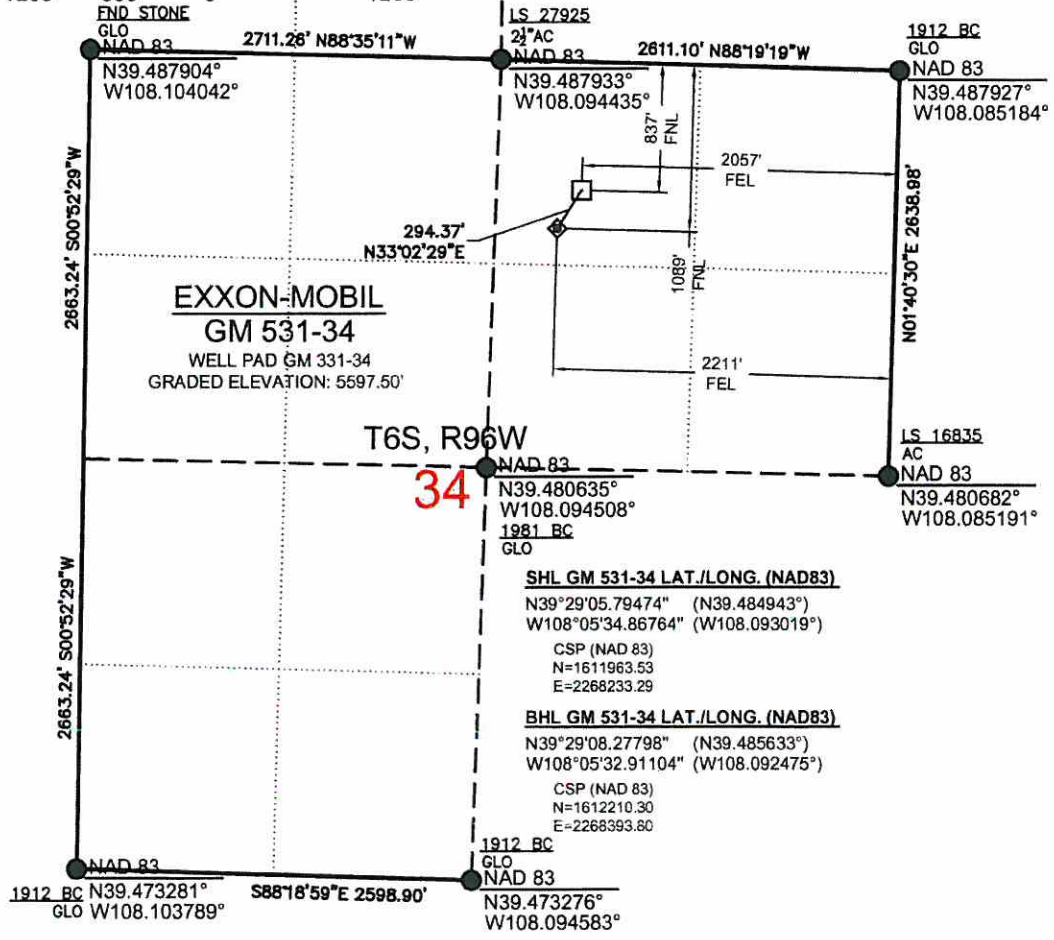
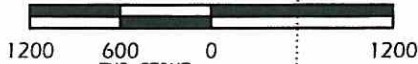


1" = 1200'

Scale in feet



EXXON-MOBIL
GM 531-34
 WELL PAD GM 331-34
 GRADED ELEVATION: 5597.50'

T6S, R96W
34

SHL GM 531-34 LAT./LONG. (NAD83)

N39°29'05.79474" (N39.484943°)
 W108°05'34.86764" (W108.093019°)
 CSP (NAD 83)
 N=1611963.53
 E=2268233.29

BHL GM 531-34 LAT./LONG. (NAD83)

N39°29'08.27798" (N39.485633°)
 W108°05'32.91104" (W108.092475°)
 CSP (NAD 83)
 N=1612210.30
 E=2268393.80

LEGEND

- FOUND MONUMENT
- CALCULATED MONUMENT
- ◆ WELL LOCATION
- BOTTOM HOLE
- SHL - SURFACE HOLE LOCATION
- BHL - BOTTOM HOLE LOCATION
- BC - BRASS CAP
- GLO - GENERAL LAND OFFICE SURVEY

NOTES:

- 1) GPS OPERATOR Kurt Shepherd OBSERVED A PDOP OF 2.021.
- 2) ALL GPS OBSERVATIONS ARE IN COMPLIANCE WITH COGCC RULE 215
- 3) ALL DISTANCES ARE NAD83 COLORADO STATE PLANE, CENTRAL ZONE (SEA LEVEL).
- 4) THIS PLAT COMPLIES WITH COGCC RULE 303c.
- 5) NO VISIBLE IMPROVEMENTS WITHIN 400' OF WELL HEAD.
- 6) VEGETATION: SCRUB OAK, SAGE, NATIVE SHRUBS & GRASSES
- 7) BOTTOM HOLE LOCATION COORDINATES PROVIDED BY WILLIAMS PRODUCTION, RMT.

BASIS OF BEARING/DATUM

A GPS OBSERVATION FROM NGS PID AJ3465 (FABER)

BASIS OF ELEVATION

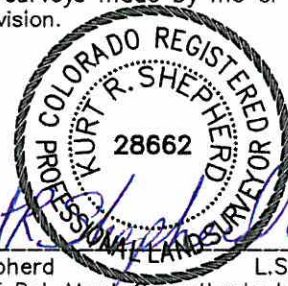
A GPS OBSERVATION FROM NGS PID AJ3465 (FABER). SAID ELEVATION IS 5186.22'.

DIMENSIONAL TIES

ALL DIMENSIONAL TIES TO SECTION LINES ARE MEASURED AT A 90° ANGLE TO THE SECTION LINE.

SURVEYORS CERTIFICATE:

This is to certify that this exhibit was prepared and location as shown was staked on the ground from actual surveys made by me or under my direct supervision.



Kurt R. Shepherd L.S. 28662
 On behalf of Del-Mont Consultants Inc.

DATE REVISED 2010-06-17

DEL-MONT CONSULTANTS IS PROVIDING GRADING DESIGN FOR THIS PROJECT THAT PROVIDES DIMENSIONS AND VOLUME INFORMATION FOR CONSTRUCTION.

DEL-MONT CONSULTANTS, INC. ENGINEERING • SURVEYING • PLANNING <small>155 Colorado Ave. • Montrose, CO 81401 • (970) 249-2551 • (970) 249-2542 fax www.del-mont.com • service@delmont.com</small>	
DESIGNED BY:	SCALE:
MGW	1"=1200'
CHECKED BY:	FILE NAME:
KS	10030-GM_331-34-SITE

NW1/4 NE1/4 S34, T6S, R96W, 6TH P.M.
WELL LOCATION PLAT
GM 531-34
WELL PAD GM 331-34
 GARFIELD COUNTY, CO
 WILLIAMS PRODUCTION, RMT

DMC JOB NO	10030
DATE ISSUED	2010-05-17
DATE SURVEYED	2008-11-19
PLAT	1 of 9