

EOG RESOURCES, INC.

Well location, LION CREEK #04-16H, located as shown in the SE 1/4 SE 1/4 of Section 16, T11N, R64W, 6th P.M., Weld County, Colorado.

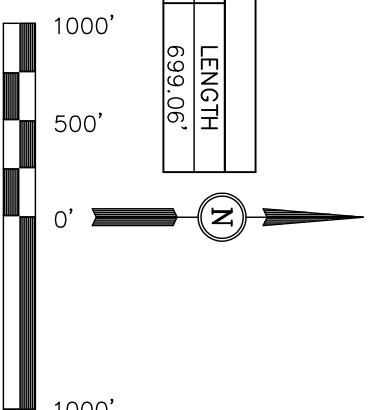
BASIS OF ELEVATION

SPOT ELEVATION AT THE NORTHEAST CORNER OF SECTION 1, T11N, R63W, 6th P.M. TAKEN FROM THE HEREFORD, QUADRANGLE, COLORADO, WELD COUNTY, 7.5 MINUTE QUAD (TOPOGRAPHIC MAP) PUBLISHED BY THE UNITED STATES DEPARTMENT OF THE INTERIOR, GEOLOGICAL SURVEY. SAID ELEVATION IS MARKED AS BEING 5352 FEET.

BASIS OF BEARINGS

BASIS OF BEARINGS IS A G.P.S. OBSERVATION.

LINE TABLE		
LINE	BEARING	LENGTH
L1	N43°54'08"W	699.06'



CERTIFICATE

THIS IS TO CERTIFY THAT THE ABOVE PLAT WAS PREPARED FROM FIELD NOTES OF ACTUAL SURVEYS MADE BY ME OR UNDER MY SUPERVISION AND THAT THE SAME ARE TRUE AND CORRECT TO THE BEST OF MY KNOWLEDGE AND BELIEF.

REGISTERED LAND SURVEYOR  
REGISTRATION NO. 17492  
STATE OF COLORADO

*[Signature]*  
10/27/2010

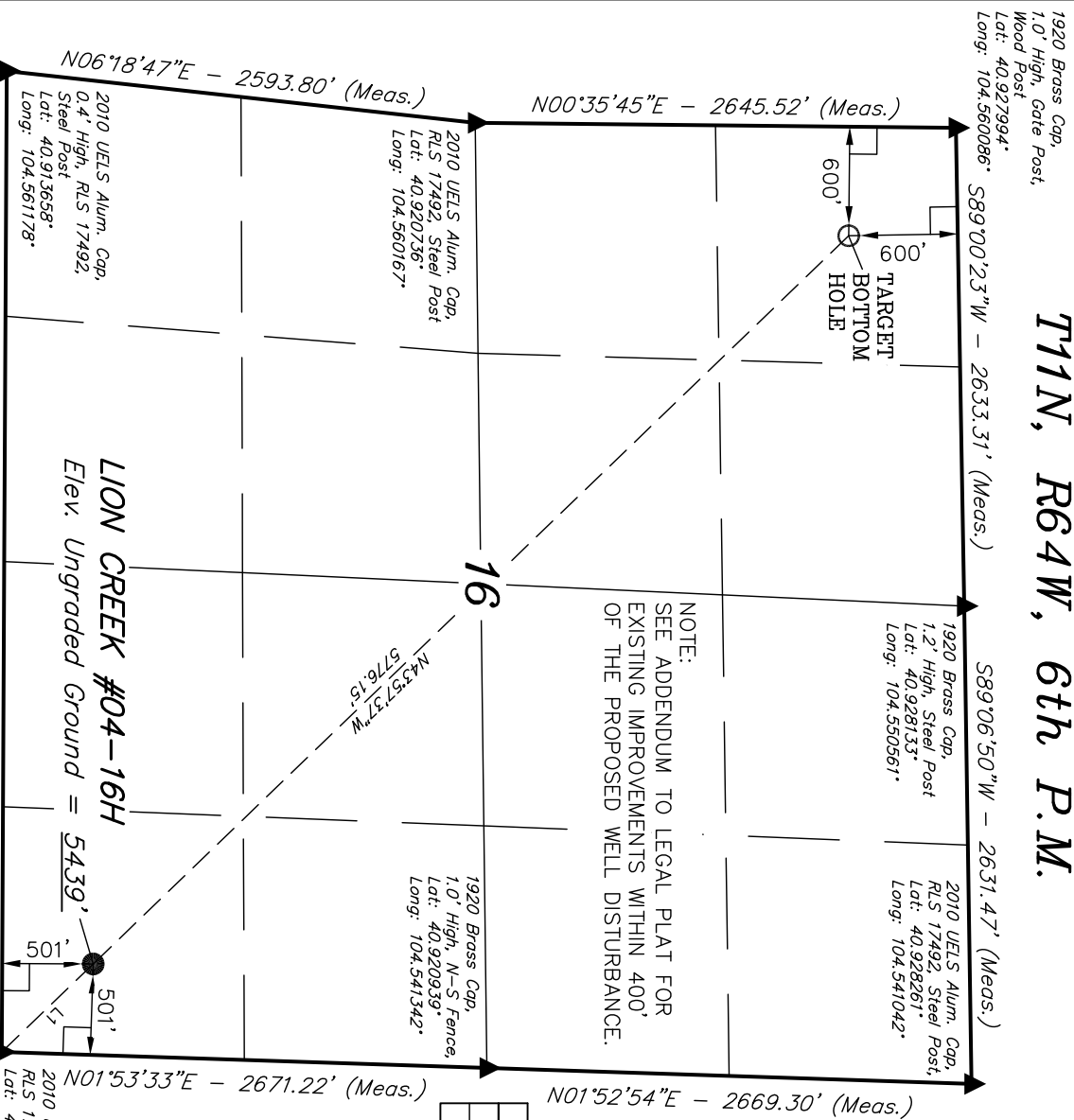
UTIAH ENGINEERING & LAND SURVEYING  
85 SOUTH 200 EAST - VERNAL, UTAH 84078  
(435) 789-1017

SCALE	DATE SURVEYED:	DATE DRAWN:
1" = 1000'	05-09-10	05-21-10

PARTY	REFERENCES
B.H. N.F. K.G.	G.L.O. PLAT

WEATHER	FILE
COLD	EOG RESOURCES, INC.

T11N, R64W, 6th P.M.



NOTE:  
SEE ADDENDUM TO LEGAL PLAT FOR  
EXISTING IMPROVEMENTS WITHIN 400'  
OF THE PROPOSED WELL DISTURBANCE.

N89°42'17"W - 5401.01' (Meas.)

LION CREEK #04-16H  
Elev. Ungraded Ground = 5439'

2010 UELS Alum. Cap,  
0.4' High, RLS 17492,  
Steel Post 3658'.  
Lat: 40.913658'.  
Long: 104.561178'.

2010 UELS Alum. Cap,  
RLS 17492, Steel Post  
3658'.  
Lat: 40.920736'.  
Long: 104.560167'.

1920 Brass Cap,  
1.2' High, Steel Post  
3658'.  
Lat: 40.928133'.  
Long: 104.550561'.

2010 UELS Alum. Cap,  
RLS 17492, Steel Post,  
Lat: 40.928261'.  
Long: 104.541042'.

1920 Brass Cap,  
1.0' High, N-S Fence,  
Lat: 40.920839'.  
Long: 104.541342'.

LEGEND:

- 90° SYMBOL
- PROPOSED WELL HEAD.
- SECTION CORNERS LOCATED.

PDOP = 1.6

NAD 83 (TARGET BOTTOM HOLE)		NAD 83 (SURFACE LOCATION)	
LATITUDE = 40°55'34.97" (40.926381)	LATITUDE = 40°54'53.97" (40.914992)	LATITUDE = 40°54'53.97" (40.914992)	LATITUDE = 40°54'53.97" (40.914992)
LONGITUDE = 104°33'28.56" (104.557933)	LONGITUDE = 104°33'28.56" (104.557933)	LONGITUDE = 104°33'28.56" (104.557933)	LONGITUDE = 104°33'28.56" (104.557933)
NAD 27 (TARGET BOTTOM HOLE)			
LATITUDE = 40°55'35.03" (40.926397)	LATITUDE = 40°54'54.03" (40.915008)	LATITUDE = 40°54'54.03" (40.915008)	LATITUDE = 40°54'54.03" (40.915008)
LONGITUDE = 104°33'26.70" (104.557417)	LONGITUDE = 104°33'26.70" (104.557417)	LONGITUDE = 104°33'26.70" (104.557417)	LONGITUDE = 104°33'26.70" (104.557417)
STATE PLANE NAD 83 (COLORADO NORTH)			
TARGET BOTTOM HOLE:	SURFACE LOCATION:	TARGET BOTTOM HOLE:	SURFACE LOCATION:
N: 1581715.820	E: 3260333.066	N: 1577609.477	E: 3264393.853
STATE PLANE NAD 27 (COLORADO NORTH)			
TARGET BOTTOM HOLE:	SURFACE LOCATION:	TARGET BOTTOM HOLE:	SURFACE LOCATION:
N: 581713.764	E: 2260482.752	N: 577607.528	E: 2264543.494