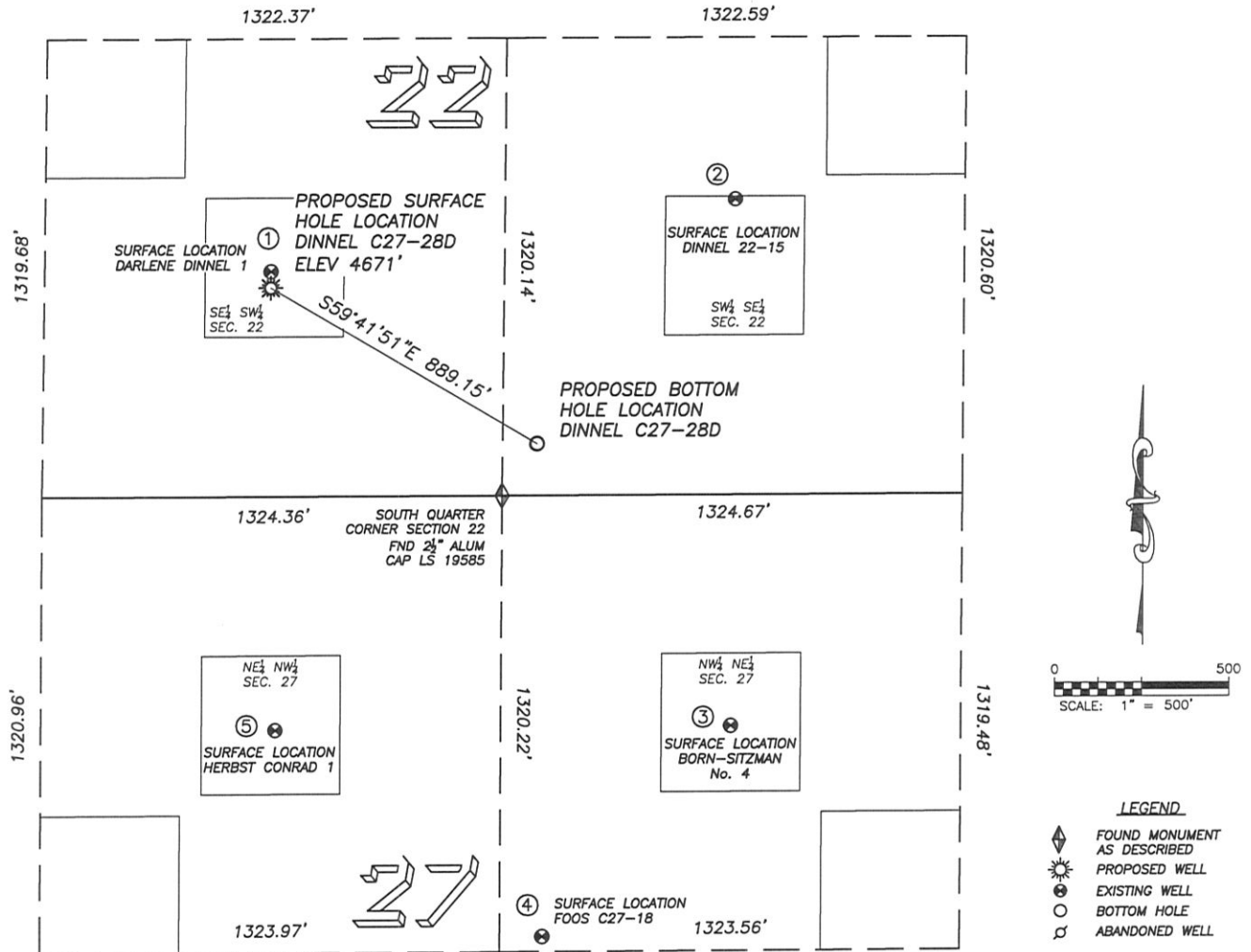


DINNEL C27-28D - MULTI-WELL PLAN

SECTION 22, TOWNSHIP 4 NORTH, RANGE 64 WEST OF THE 6TH PRINCIPAL MERIDIAN



①

DARLENE DINNEL 1
SE/SW SEC. 22
648' FSL, 1975' FWL
913' NW OF PROPOSED
BOTTOM HOLE LOCATION
LAT. N40.29247°
LONG. W104.53934°
EL: 4671'
PDOP 1.3

②

DINNEL 22-15
SW/SE SEC. 22
851' FSL, 1985' FEL
904' NE OF PROPOSED
BOTTOM HOLE LOCATION
LAT. N40.29304°
LONG. W104.53455°
EL: 4668'
PDOP 1.7

③

BORN-SITZMAN No. 4
NW/NE SEC. 27
669' FNL, 1986' FEL
990' SE OF PROPOSED
BOTTOM HOLE LOCATION
LAT. N40.28887°
LONG. W104.53458°
EL: 4673'
PDOP 1.8

④

FOOS C27-18
NW/NE SEC. 27
1276' FNL, 2525' FEL
1426' S OF PROPOSED
BOTTOM HOLE LOCATION
LAT. N40.28719°
LONG. W104.53653°
EL: 4675'
PDOP 2.1

⑤

HERBST CONRAD 1
NE/NW SEC. 27
675' FNL, 1999' FWL
1119' SW OF PROPOSED
BOTTOM HOLE LOCATION
LAT. N40.28884°
LONG. W104.53928°
EL: 4673'
PDOP 2.4

NOTES:

- 1) THIS DOES NOT REPRESENT A BOUNDARY SURVEY
- 2) THE LATITUDES AND LONGITUDES SHOWN ARE REFERENCED TO NAD83
- 3) DATUM FOR ELEVATION IS NAVD88. ELEVATIONS ARE DERIVED FROM GPS-RTK OBSERVATIONS PROCESSED THROUGH OPUS, UTILIZING THE GEOID03 MODEL