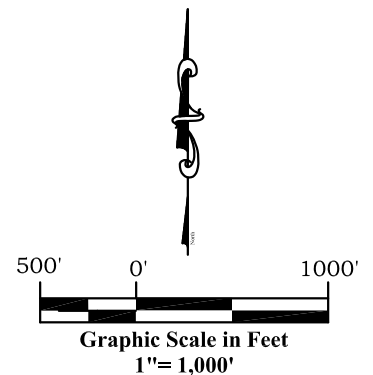
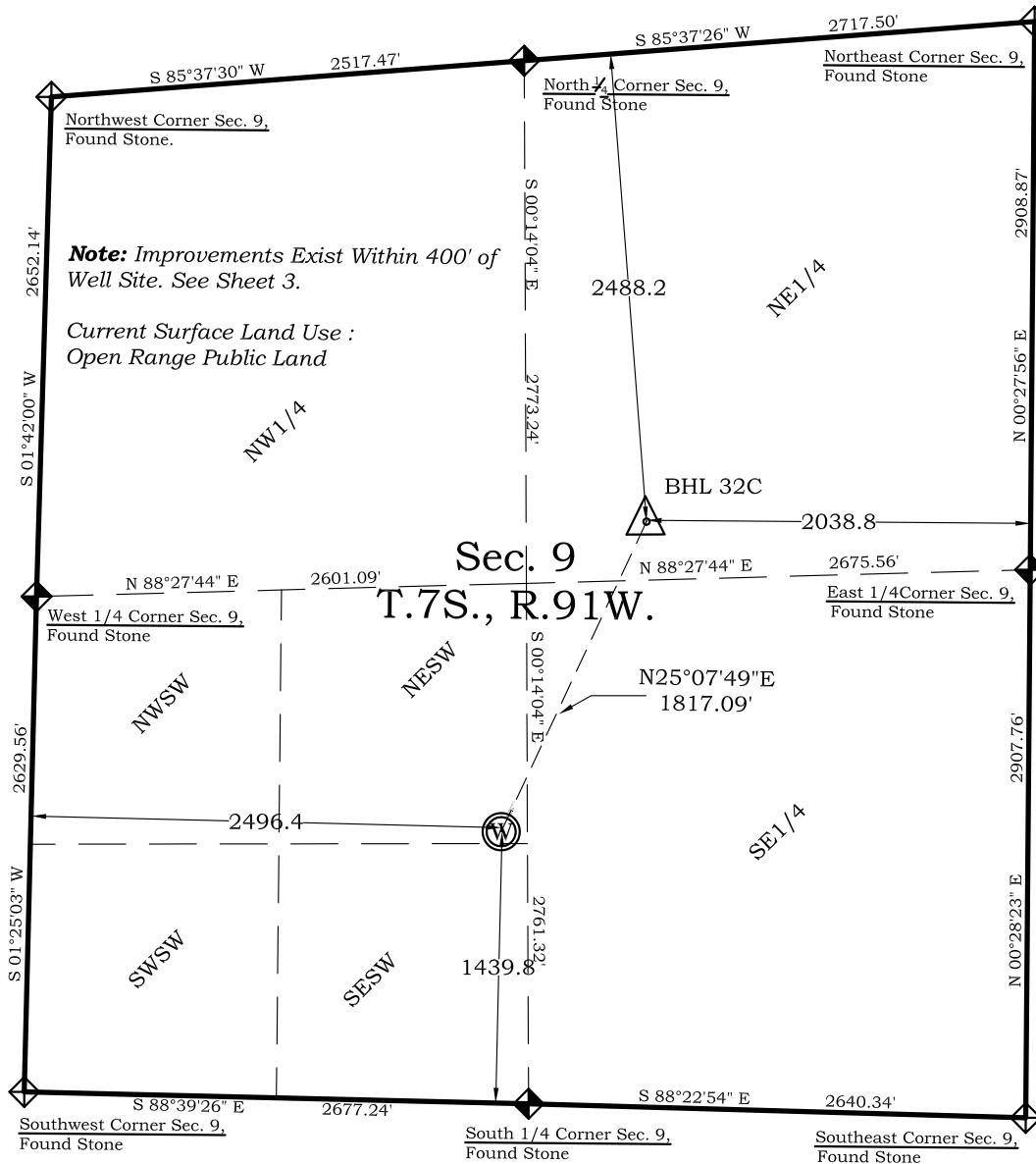


Well Location Plat CSF 32C-09-07-91 Section 9, Township 7 South, Range 91 West



Surface: **CSF 32C-09-07-91**

1440' FSL
2496 FWL
Gnd El= 6812
Pad El= 6807
NAD83
Lat: 39.458513118°N
Long: 107.558904939°W

NAD27
Lat: 39.458532437°N
Long: 107.558293961°W
UTM 13 NORTH
NAD 1983
NORTHING
14339819.763
EASTING
918117.953

Prepared For Antero Resources:
Proposed CSF 32C-09-07-91 Well Situate in The SW1/4
Section 9, Township 7 South, Range 91 West of the 6th.
Principal Meridian, County of Garfield, State of
Colorado.

SURVEYOR'S CERTIFICATE

I, SCOTT E. AIBNER, A REGISTERED LAND SURVEYOR, LICENSED UNDER THE LAWS OF THE STATE OF COLORADO DO HEREBY CERTIFY THAT THE SURVEY SHOWN HEREON WAS PREPARED BY RIVER VALLEY SURVEY, INC., FOR ANTERO RESOURCES, BY ME OR UNDER MY DIRECT SUPERVISION AND HAS BEEN STAKED ON THE GROUND AS SHOWN ON THE PLAT AND THAT THIS PLAT IS A TRUE REPRESENTATION THEREOF.

BY: 
SCOTT E. AIBNER, COLORADO REG. NO. 31143

Legend

- ◈ - Field Surveyed Section Corner
- ◆ - Field Surveyed Quarter Corner
- ⊙ - Calculated Section Corner Location
- ⊕ - Field Surveyed 1/6 Corner

Notes:

1. LATITUDE AND LONGITUDE COORDINATES ARE DIFFERENTIALLY CORRECTED AND BASED ON PUBLISHED NGS CONTROL STATION "WDP-5". SYSTEM: UTM ZONE: 13 NORTH DATUM: NAD 1983 (CONUS)
2. ELEVATIONS ARE BASED ON NAVD OF 1983.
3. ALL BOTTOM AND TOP HOLE LOCATIONS ARE MEASURED 90 DEGREES FROM SECTION LINE.
4. USGS QUADRANGLE MAP "GIBSON GULCH".
5. CURRENT SURFACE LAND USE: OPEN RANGE LAND.
6. PDOP AT THE TIME OF LOCATION OF SURFACE WELL = 2.5

Bottom Hole: **CSF 32C-09-07-91**

2488' FNL
2039' FEL
NAD83
Lat: 39.463086879°N
Long: 107.556338883°W
NAD27
Lat: 39.463106201°N
Long: 107.555728000°W



River Valley Survey, Inc.
110 East 3rd. Street, Suite 213
Rifle, Colorado 81650
Ph: 970-379-7846

Project: CASTLE SPRINGS FEDERAL E PAD

Field Date: 06-09-10

Date: 07-07-10

Scale: 1"= 1000'

Sheet: 1 of 14

Well Location Plat
Prepared For Antero Resources

Situate In:
SW1/4 Section 9, T.7S., R. 91 W. of the
6th P.M., Garfield County, Colorado

