

PROPOSED BMP's

LARAMIE ENERGY II, LLC

Bruton 30-10 Pad
Lat: 39.247716 Long: -107.808590
NWSE Sec. 30, Twn. 9S, Rng. 93W 6th PM
Mesa County, CO

Stormwater Management

Stormwater Management will be managed under (Laramie Energy II) LE II's proposed Stormwater Management Plan known as the "Bruton Project Area". Stormwater Plan and Permit COR03G219 on file with CDPHE. See attached Stormwater Management Boundary Exhibit.

Prior to construction a stormwater "perimeter" will be built around the site for initial work purposes. Once the pad construction is completed, LE II's Stormwater Administrator will inspect the site and install any necessary Erosion Control Devices to manage sediment discharge from the pad. These devices may include but are not limited to:

- Rock Check dams
- Settling ponds
- Straw waddles
- Silt Fencing (used sparingly)

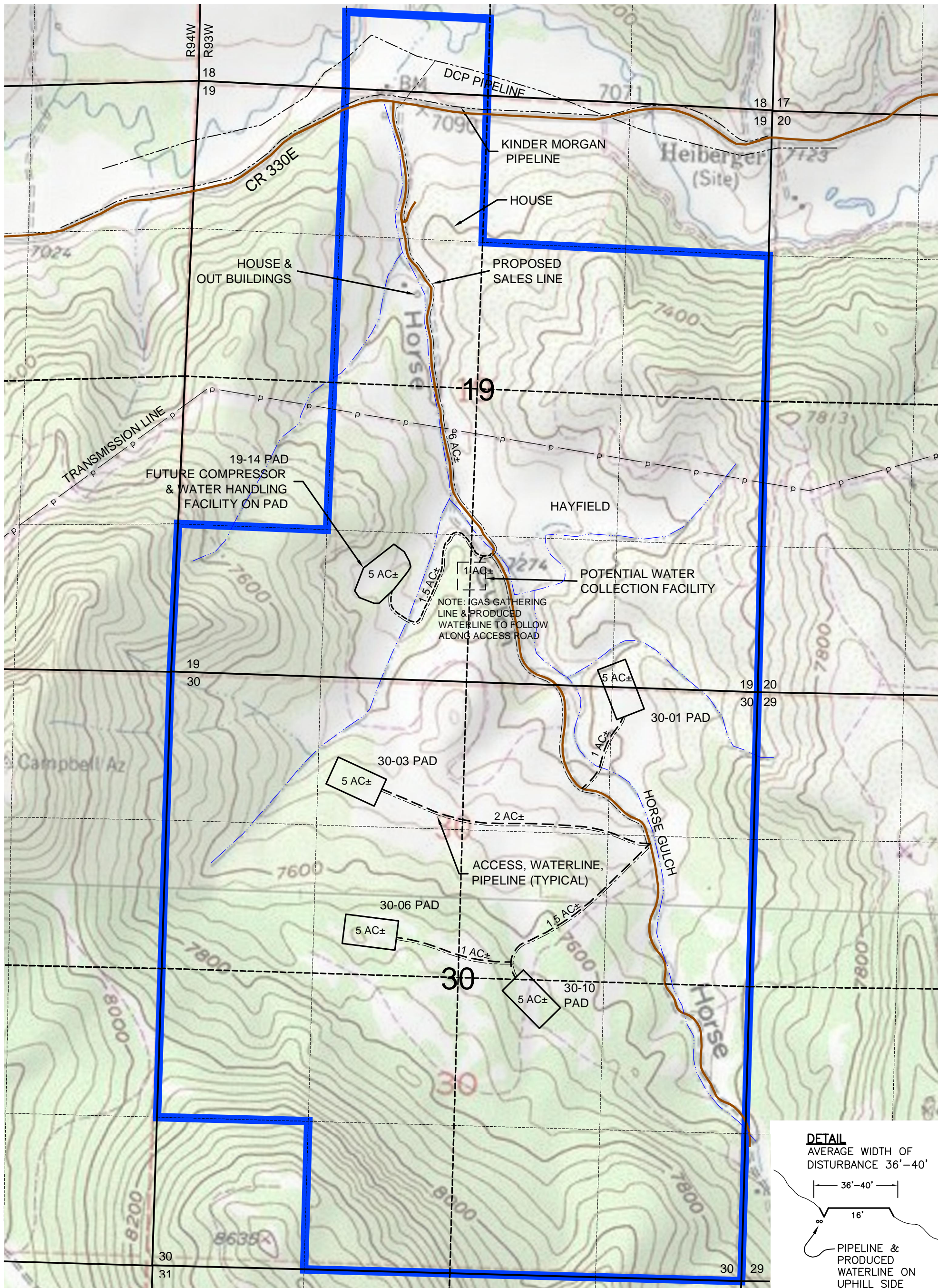
Once the final stormwater Erosion Control Devices are installed they will be mapped in GIS and a diagram of the site will be drafted and included as part of the Stormwater Documentation as required by the CDPHE General Permit.

Each site will be inspected every 14 days and 72 hrs after any major storm event. These inspections will be recorded and documented in the Stormwater Manual onsite and any necessary repairs or modifications will be made and documented.

Spill Prevention Control and Counter Measures (SPCC)

Once the wells are drilled and completed onsite Laramie Energy II will prepare a SPCC plan for the site.

EXHIBIT A

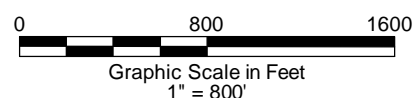


LARAMIE ENERGY II, LLC BRUTON PROJECT AREA
 STORMWATER MANAGEMENT PLAN BOUNDARY
 LOCATED IN SECTIONS 18, 19 & 30, T9S R93W
 MESA COUNTY, COLORADO

ACRES OF DISTURBANCE:	
PADS	26 ACRES±
ACCESS, PIPELINES, WATERLINES	14 ACRES±
TOTAL	40 ACRES±



STORMWATER MANAGEMENT
 BOUNDARY - 1,070 ACRES ±



PAD SITES & ACCESS ROUTES ARE PRELIMINARY ONLY.
 SUBJECT TO FIELD SURVEYS & ONSITES TO
 DETERMINE FINAL LOCATION AS AGREED TO BY
 OWNER & OPERATOR.