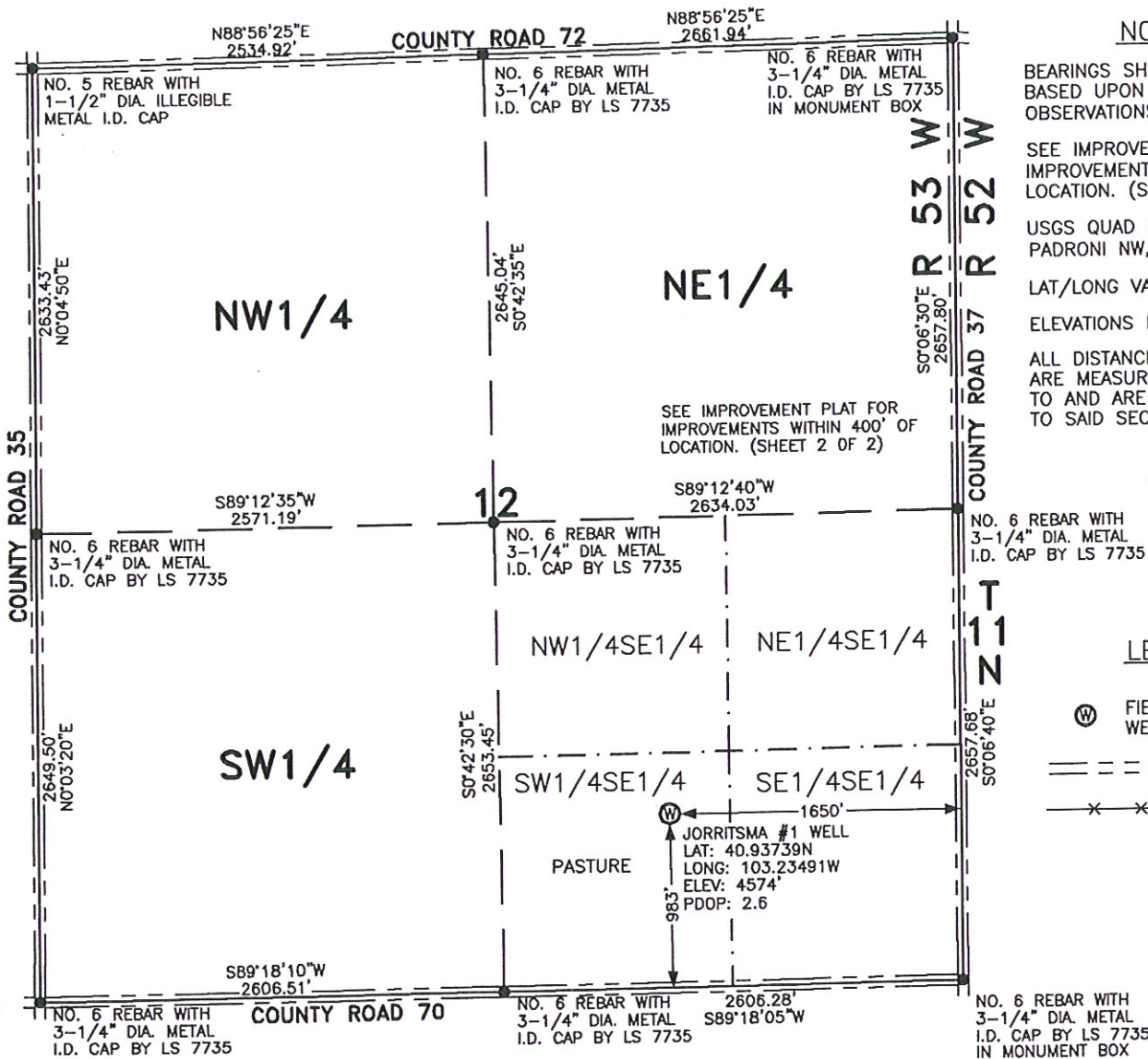


WELL LOCATION FOR
MERCHANT ENERGY PARTNERS, LLC



BEARINGS SHOWN HEREON ARE
BASED UPON RTK GPS
OBSERVATIONS.

USGS QUAD MAP:
PADRONI NW, COLO.

ALL DISTANCES TO SECTION LINES
ARE MEASURED PERPENDICULAR
TO AND ARE AT RIGHT ANGLES
TO SAID SECTION LINES.

LEGEND

FIELD SURVEYED
WELL LOCATION

== == == ROAD

 FENCE

THIS WELL LOCATION PLAT HAS BEEN PREPARED FOR MERCHANT ENERGY PARTNERS, LLC, TO LOCATE THE JORRITSMA #1 WELL BEING 1650 FEET FROM THE EAST LINE AND 983 FEET FROM THE SOUTH LINE IN THE SW1/4SE1/4 OF SECTION 12, TOWNSHIP 11 NORTH, RANGE 53 WEST OF THE 6TH P.M., LOGAN COUNTY, COLORADO. THE SURFACE ELEVATION AT THIS POINT IS 4574 FEET. THIS IS NOT A LAND SURVEY PLAT.



LEIBERT-McATEE & ASSOCIATES, INC.

P.O. BOX 442 615 SOUTH TENTH AVENUE
STERLING, CO 80751 970-522-1960

FIELD DATE: 6-8-10

DWG DATE: 6-14-10

GPS OPERATOR:
DARREN VEAL

JORRITSMA #1

DWG NO. 1523-09

SHEET 1 OF 2