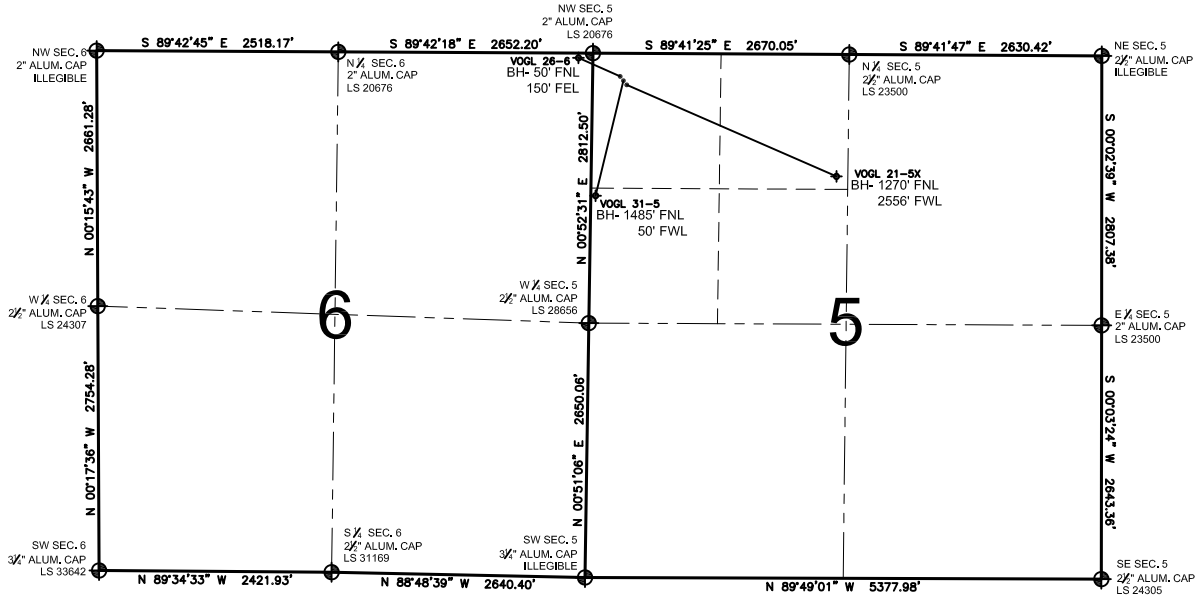


PAD DRAWING - VOGL 3 PAD

SECTION 5, TOWNSHIP 2 NORTH, RANGE 67 WEST, 6TH P.M.



NOTES:

1. THIS SURVEY WAS DONE BY GPS METHODS AND CONFORMS TO THE MINIMUM STANDARDS SET BY THE C.O.G.C.C., RULE NO. 215
2. ELEVATIONS SHOWN AT THE WELL HEAD, AS WELL AS HORIZONTAL CONTROL, ARE BASED ON GPS-RTK VALUES DERIVED FROM DOING 2-HOUR STATIC GPS SESSIONS AND REDUCTIONS USING O.P.U.S. SOLUTIONS.
VERTICAL = NAVD88; HORIZONTAL = NAD83/92
3. THE BEARINGS SHOWN HEREON ARE BASED ON GPS OBSERVATIONS BETWEEN THE MONUMENTS SHOWN HEREON AS FOUND ON THE FIELD DATE BELOW.
4. DISTANCES SHOWN ARE AT GROUND LEVEL, AS MEASURED IN THE FIELD, WITH TIES TO WELLS MEASURED AT A PERPENDICULAR TO SECTION LINES.

LEGEND

- = EXISTING MONUMENT

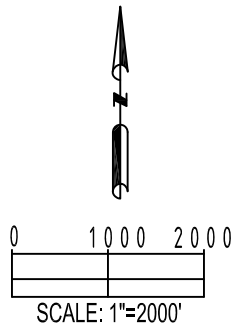
•
 = PROPOSED WELL

+
 = BOTTOM HOLE

♦
 = EXISTING WELL
 BH= BOTTOM HOLE

NOTES:

- VOGL 26-6 TO BE AT 302' FNL, 340' FWL.
 BOTTOM HOLE AT 50' FNL & 150' FEL.
 VOGL 31-5 TO BE AT 315' FNL, 349' FWL.
 BOTTOM HOLE AT 1485' FNL & 50' FWL.
 VOGL 21-5X TO BE AT 329' FNL, 358' FWL.
 BOTTOM HOLE AT 1270' FNL & 2556' FWL.



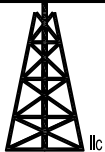
REVISIONS

INITIAL	DATE
SMF	08-25-09
SMF	11-12-09
SMF	07-14-10

PREPARED BY:

PFS

Petroleum Field Services, LLC
1801 W. 13th Ave.
Denver, CO 80204



KERR-MCGEE OIL & GAS ONSHORE LP

FIELD DATE:

08-10-09

DRAWING DATE:

08-12-09

BY:

SMF

PAD NAME:

VOGL 3 PAD

SURFACE LOCATION:

WELD COUNTY, COLORADO
NW 1/4 NW 1/4, SEC. 5, T2N, R67W