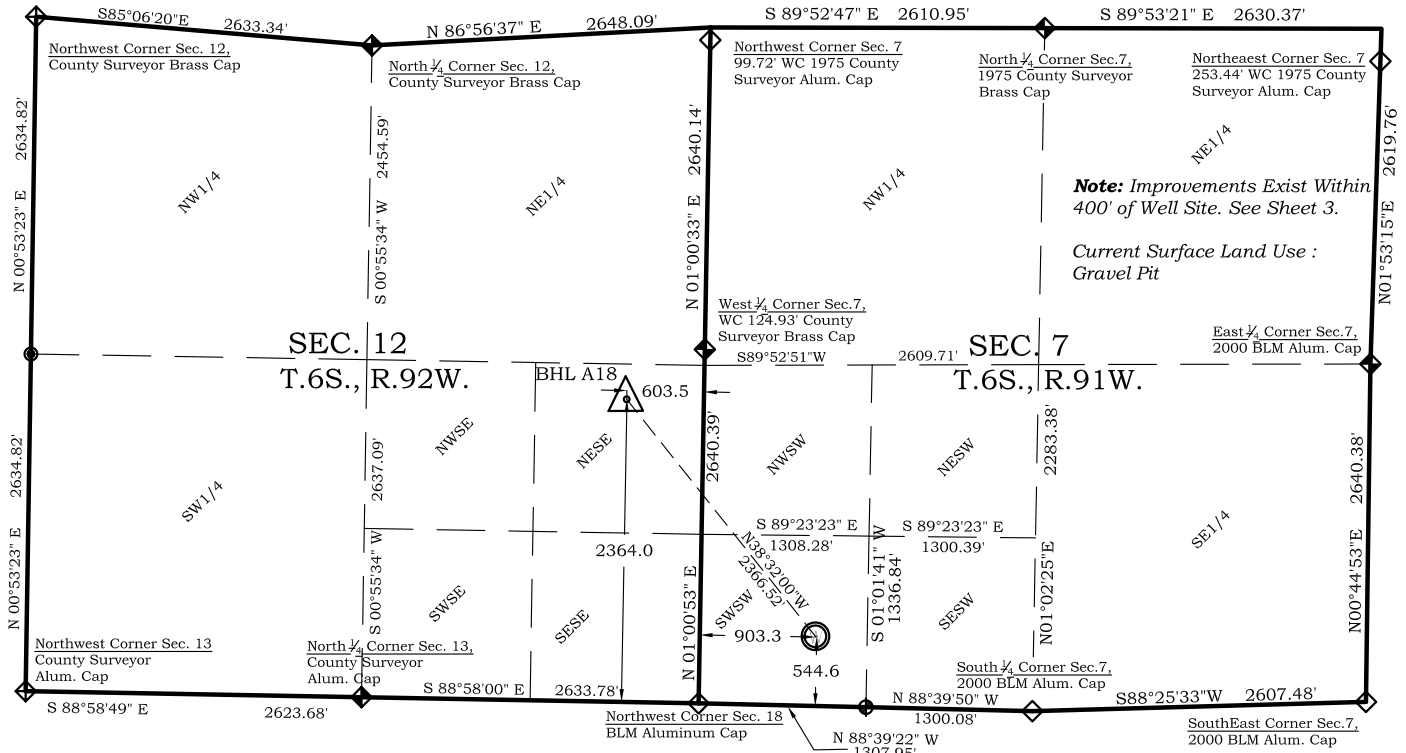


Well Location Plat Frei A18

Section 7, Township 6 South, Range 91 West

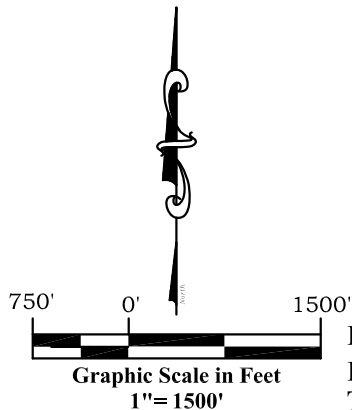


Note: Improvements Exist Within 400' of Well Site. See Sheet 3.

Current Surface Land Use :
Gravel Pit

Legend

- ◆ - Field Surveyed Section Corner
- ◆ - Field Surveyed Quarter Corner
- ⊙ - Calculated Section Corner Location
- ◆ - Field Surveyed 1/16 Corner



SURVEYOR'S CERTIFICATE

I, SCOTT E. AIBNER, A REGISTERED LAND SURVEYOR, LICENSED UNDER THE LAWS OF THE STATE OF COLORADO DO HEREBY CERTIFY THAT THE SURVEY SHOWN HEREON WAS PREPARED BY RIVER VALLEY SURVEY, INC., FOR ANTERO RESOURCES, BY ME OR UNDER MY DIRECT SUPERVISION AND THAT THIS PLAT IS A TRUE REPRESENTATION THEREOF.



BY: SCOTT E. AIBNER, COLORADO REG. NO. 31143

Bottom Hole: Frei A18

2364' FSL
604' FEL
NAD83
Lat: 39.540951312°N
Long: 107.608733172°W
NAD27
Lat: 39.540970701°N
Long: 107.608119900°W

Surface: Frei A18

545' FSL
903' FWL
Gnd El= 5590.0
Pad El= 5596.0
NAD83
Lat: 39.535989615°N
Long: 107.603319287°W
NAD27
Lat: 39.536008998°N
Long: 107.602706278°W
UTM 13 NORTH
NAD 1983
NORTHING
14368394.465
EASTING
906395.492

Prepared For Antero Resources

Proposed Frei A18 Well Situate in The SW 1/4 SW 1/4 Section 7,
Township 6 South, Range 91 West of the 6 th. Principal
Meridian, County of Garfield, State of Colorado

Notes:

1. LATITUDE AND LONGITUDE COORDINATES ARE DIFFERENTIALLY CORRECTED AND BASED ON PUBLISHED NGS CONTROL STATION "WDP-5". SYSTEM: UTM ZONE: 13 NORTH DATUM: NAD 1983 (CONUS)
2. ELEVATIONS ARE BASED ON NAVD OF 1983.
3. ALL BOTTOM AND TOP HOLE LOCATIONS ARE MEASURED 90 DEGREES FROM SECTION LINE.
4. USGS QUADRANGLE MAP "SILT".
5. CURRENT SURFACE LAND USE: GRAVEL PIT.
6. PDOP AT THE TIME OF LOCATION OF SURFACE WELL = 2.4



River Valley Survey, Inc.
110 East 3rd. Street, Suite 213
Rifle, Colorado 81650
Ph: 970-379-7846

Project: FREI A PAD

Field Date: 05-10-10

Date: 07-01-2010

Scale: 1"= 1500'

Sheet: 1 of 8

Well Location Plat
Prepared For Antero Resources

Situate In:
SW 1/4 Section 7, T6S., R. 91 W. of the
6th P.M., Garfield County, Colorado

