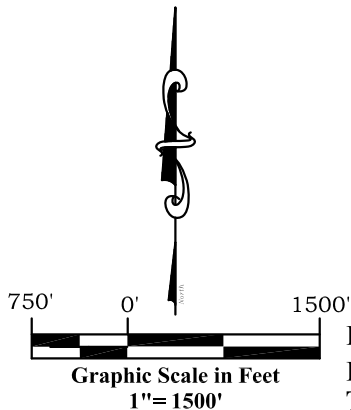
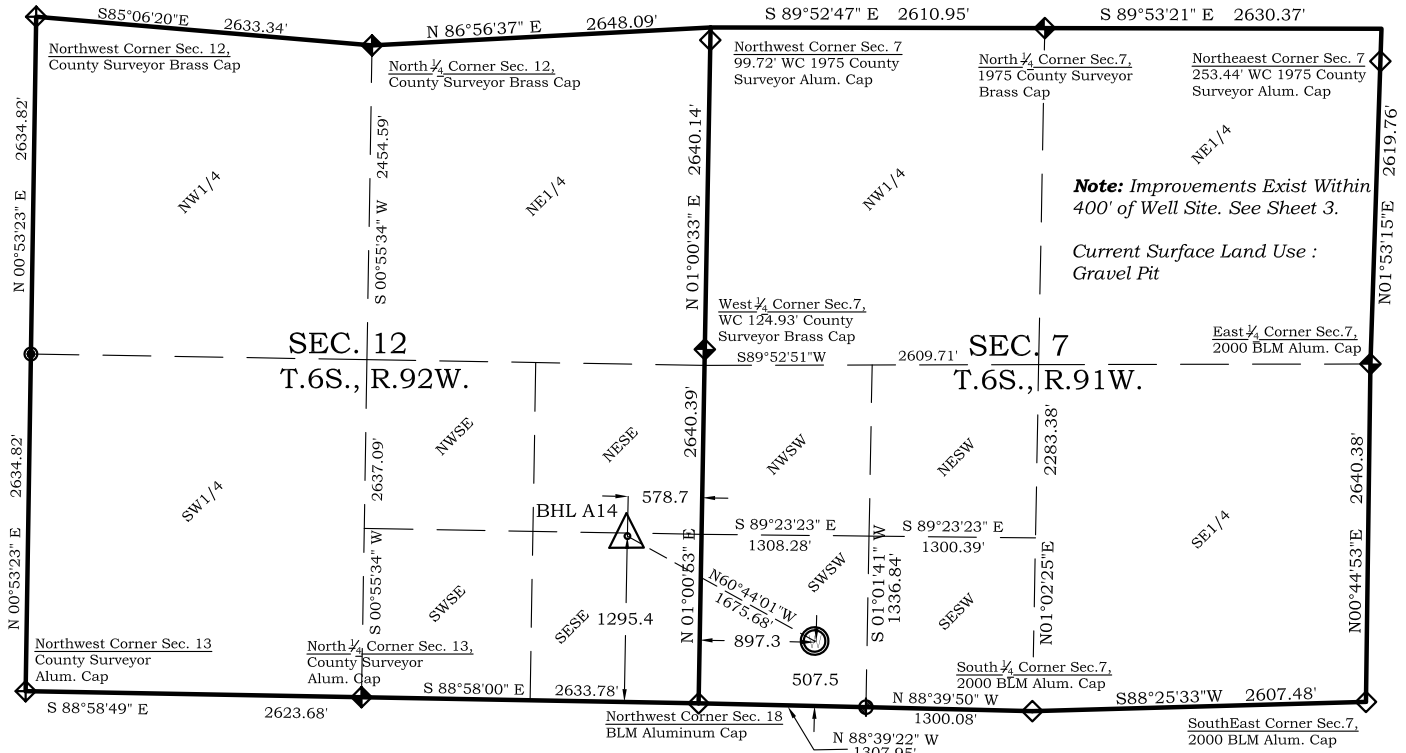


# Well Location Plat Frei A14

Section 7, Township 6 South, Range 91 West



## Legend

- Field Surveyed Section Corner
- Field Surveyed Quarter Corner
- Calculated Section Corner Location
- Field Surveyed 1/6 Corner

## Bottom Hole: Frei A14

1295' FSL  
579' FEL  
**NAD83**  
Lat: 39.538019112°N  
Long: 107.608602529°W  
**NAD27**  
Lat: 39.538038501°N  
Long: 107.607989300°W

## Surface: Frei A14

507' FSL  
897' FWL  
Gnd El= 5592.0  
Pad El= 5596.0  
**NAD83**  
Lat: 39.535887819°N  
Long: 107.603338932°W  
**NAD27**  
Lat: 39.535907202°N  
Long: 107.602725924°W  
UTM 13 NORTH  
**NAD 1983**  
NORTHING  
14368357.553  
EASTING  
906388.879

Prepared For Antero Resources

Proposed Frei A14 Well Situate in The SW 1/4 SW 1/4 Section 7,  
Township 6 South, Range 91 West of the 6 th. Principal  
Meridian, County of Garfield, State of Colorado

## Notes:

- LATITUDE AND LONGITUDE COORDINATES ARE DIFFERENTIALLY CORRECTED AND BASED ON PUBLISHED NGS CONTROL STATION "WDP-5". SYSTEM: UTM ZONE: 13 NORTH DATUM: NAD 1983 (CONUS)
- ELEVATIONS ARE BASED ON NAVD OF 1983.
- ALL BOTTOM AND TOP HOLE LOCATIONS ARE MEASURED 90 DEGREES FROM SECTION LINE.
- USGS QUADRANGLE MAP "SILT".
- CURRENT SURFACE LAND USE: GRAVEL PIT.
- PDOP AT THE TIME OF LOCATION OF SURFACE WELL = 2.4

## SURVEYOR'S CERTIFICATE

I, SCOTT E. AIBNER, A REGISTERED LAND SURVEYOR, LICENSED UNDER THE LAWS OF THE STATE OF COLORADO DO HEREBY CERTIFY THAT THE SURVEY SHOWN HEREON WAS PREPARED BY RIVER VALLEY SURVEY, INC., FOR ANTERO RESOURCES, BY ME OR UNDER MY DIRECT SUPERVISION AND THAT THIS PLAT IS A TRUE REPRESENTATION THEREOF.

BY:   
SCOTT E. AIBNER, COLORADO REG. NO. 31143



**River Valley Survey, Inc.**  
110 East 3rd. Street, Suite 213  
Rifle, Colorado 81650  
Ph: 970-379-7846

**Project:** FREI A PAD

**Field Date:** 05-10-10

**Date:** 07-01-2010

**Scale:** 1"= 1500'

**Sheet:** 1 of 8

**Well Location Plat  
Prepared For Antero Resources**

**Situate In:**  
SW 1/4 Section 7, T6S., R. 91 W. of the  
6th P.M., Garfield County, Colorado

