

ENSIGN

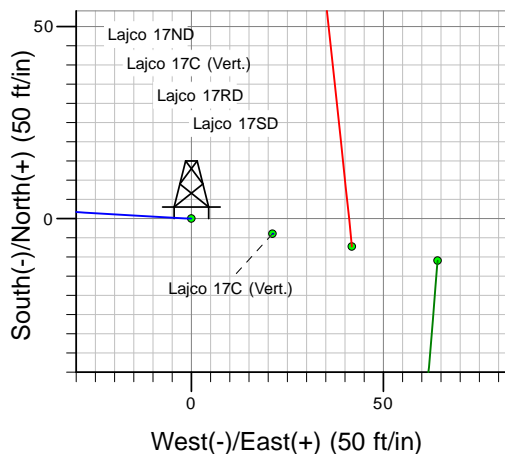
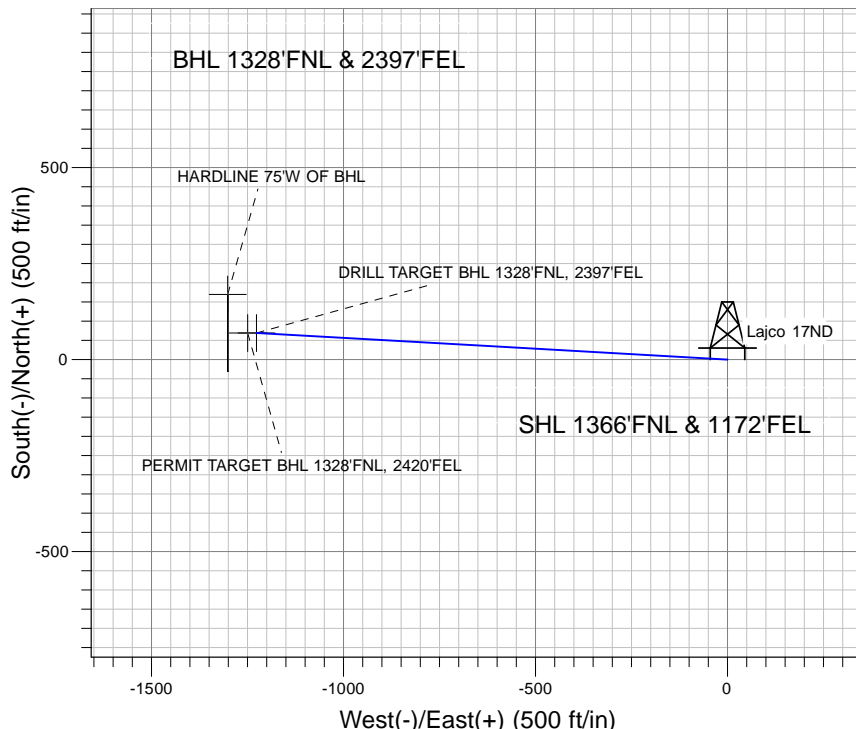
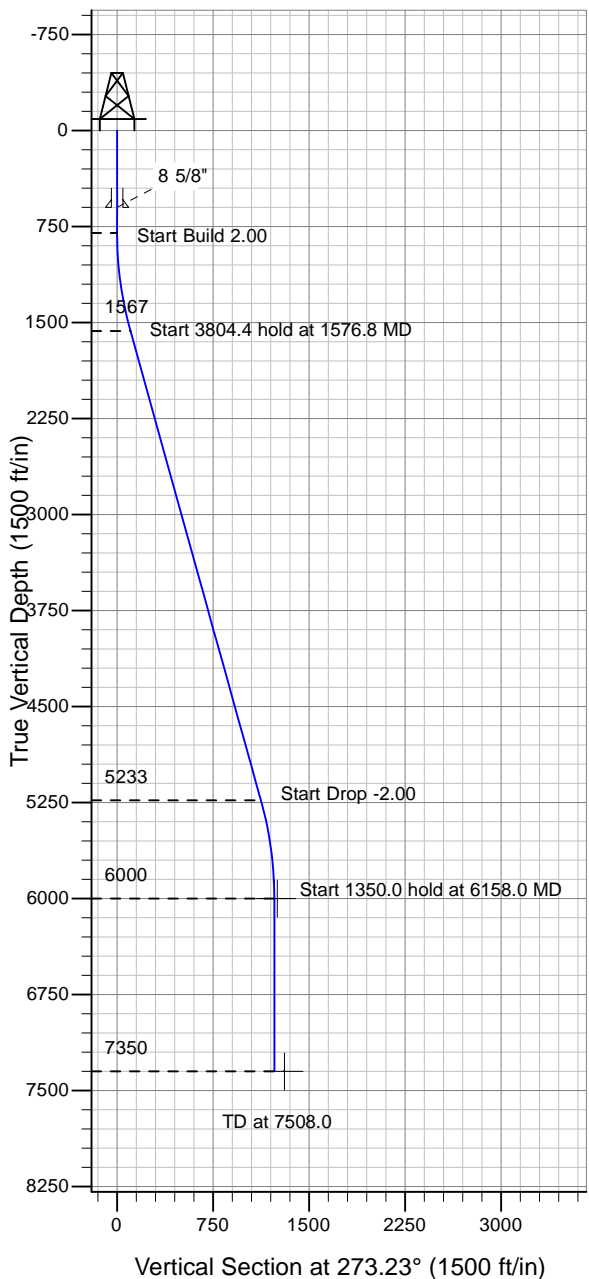
Directional

Well Name: Lajco 17ND

Surface Location: Lajco Pad Sec.17-T4N-R67W
 North American Datum 1983 , US State Plane 1983 , Colorado Northern Zone
 Ground Elevation: 4790.0

+N/-S+E/-W Northing Easting Latitude Longitude Slot
 0.0 0.0 1358667.15 3164494.55 40° 18' 59.184 N 104° 54' 36.360 W
 Original Well Elev WELL @ 4803.0ft (Original Well Elev)

PETROLEUM DEVELOPMENT CORP Weld County CO



Lajco Pad Sec.17-T4N-R67W
 Lajco 17ND
 Plan #1 (6-20-10)
 9:52, June 23 2010



Azimuths to True North
 Magnetic North: 9.07°

Magnetic Field
 Strength: 53175.9nT
 Dip Angle: 66.99°
 Date: 6/20/2010
 Model: IGRF2010

WELLBORE TARGET DETAILS (LAT/LONG)

| Name | TVD | +N/-S | +E/-W | Latitude | Longitude | Shape |
|--------------------------------------|--------|-------|---------|------------------|-------------------|---------|
| DRILL TARGET BHL 1328'FNL, 2397'FEL | 6000.0 | 69.3 | -1226.3 | 40° 18' 59.868 N | 104° 54' 52.191 W | Point |
| PERMIT TARGET BHL 1328'FNL, 2420'FEL | 6000.0 | 69.3 | -1249.3 | 40° 18' 59.868 N | 104° 54' 52.488 W | Point |
| HARDLINE 75°W OF BHL | 7350.0 | 169.3 | -1301.3 | 40° 19' 0.857 N | 104° 54' 53.159 W | Polygon |

SECTION DETAILS

| Sec | MD | Inc | Azi | TVD | +N/-S | +E/-W | DLeg | TFace | VSec | Target |
|-----|--------|-------|--------|--------|-------|---------|------|--------|--------|-------------------------------------|
| 1 | 0.0 | 0.00 | 0.00 | 0.0 | 0.0 | 0.0 | 0.00 | 0.00 | 0.0 | |
| 2 | 800.0 | 0.00 | 0.00 | 800.0 | 0.0 | 0.0 | 0.00 | 0.00 | 0.0 | |
| 3 | 1576.8 | 15.54 | 273.23 | 1567.3 | 5.9 | -104.5 | 2.00 | 273.23 | 104.7 | |
| 4 | 5381.2 | 15.54 | 273.23 | 5232.7 | 63.4 | -1121.8 | 0.00 | 0.00 | 1123.6 | |
| 5 | 6158.0 | 0.00 | 0.00 | 6000.0 | 69.3 | -1226.3 | 2.00 | 180.00 | 1228.3 | DRILL TARGET BHL 1328'FNL, 2397'FEL |
| 6 | 7508.0 | 0.00 | 0.00 | 7350.0 | 69.3 | -1226.3 | 0.00 | 0.00 | 1228.3 | |