

DALEY LAND SURVEYING, INC.

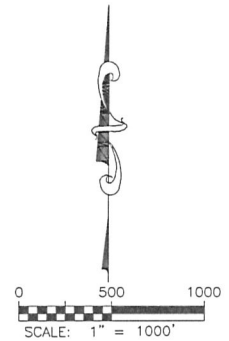
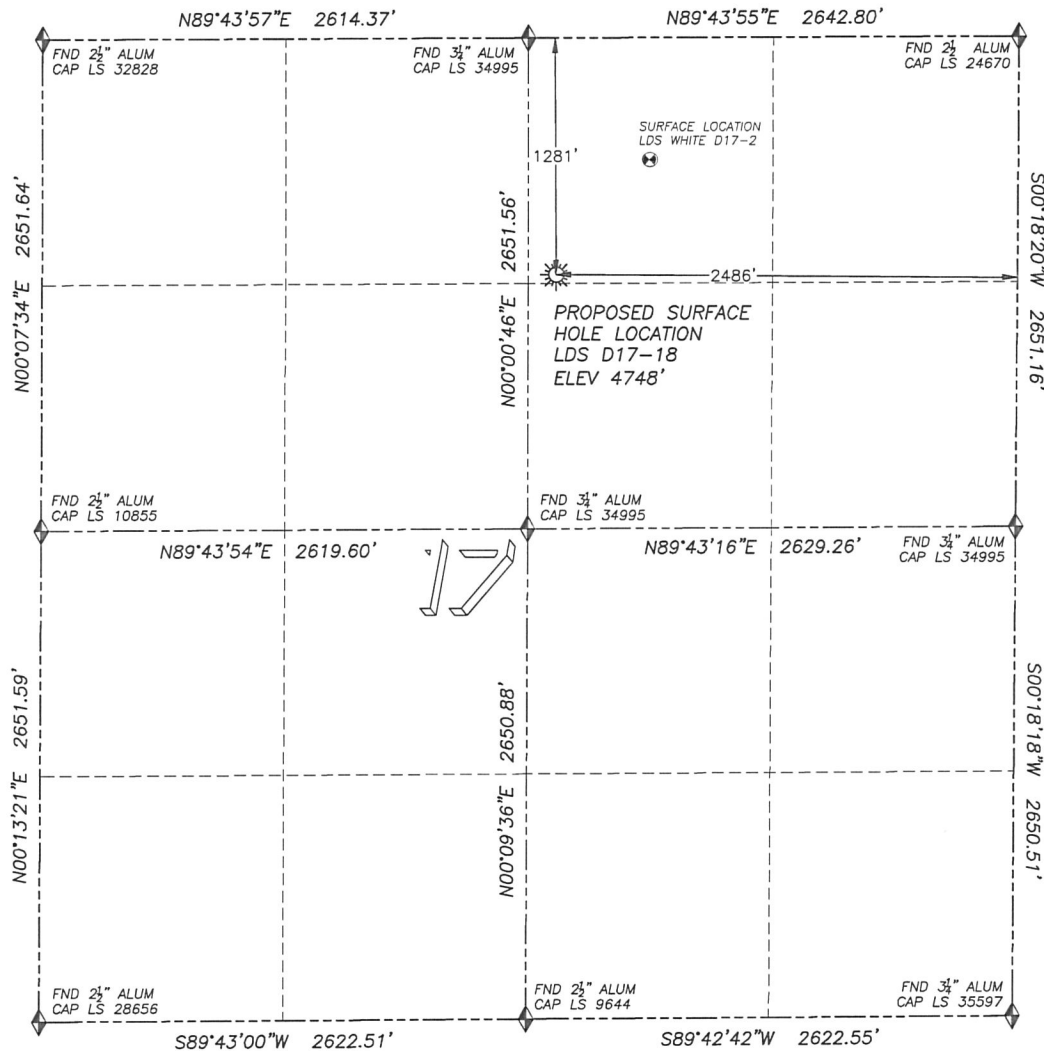
PARKER, CO. 80134

303 953 9841

# WELL LOCATION CERTIFICATE

## LDS D17-18

SECTION 17, TOWNSHIP 3 NORTH, RANGE 64 WEST OF THE 6TH PRINCIPAL MERIDIAN

**LEGEND**

- ◆ FOUND MONUMENT AS DESCRIBED
- ☼ PROPOSED WELL
- EXISTING WELL
- BOTTOM HOLE
- ⊗ ABANDONED WELL

**NAD 83 LATITUDE AND LONGITUDE****LDS D17-18 SURFACE HOLE:**

LATITUDE: N40.22913°  
 LONGITUDE: W104.57488°  
 ELEVATION: 4748'  
 PDOP 1.6  
 1281' FNL, 2486' FEL

**NEAREST EXISTING WELL:**

LDS WHITE D17-2 SURFACE HOLE  
 LATITUDE: N40.23084°  
 LONGITUDE: W104.57268°  
 ELEVATION: 4745'  
 800' NORTHEAST

QUARTER/QUARTER: NW4/NE4

**NEAREST APPARENT PROPERTY LINE:**

1281'± NORTH

IN ACCORDANCE WITH A REQUEST FROM MATT CAMPBELL OF NOBLE ENERGY INC., DALEY LAND SURVEYING, INC. HAS DETERMINED THE SURFACE LOCATION OF THE LDS D17-18 WELL TO BE 1281' FNL, 2486' FEL, AS MEASURED AT NINETY (90) DEGREES FROM THE SECTION LINES OF SECTION 17, TOWNSHIP 3 NORTH, RANGE 64 WEST OF THE 6TH PRINCIPAL MERIDIAN, WELD COUNTY, COLORADO.

I HEREBY CERTIFY THAT THIS WELL LOCATION CERTIFICATE WAS PREPARED BY ME OR UNDER MY DIRECT SUPERVISION, THAT THE WORK WAS COMPLETED ON 3/23/2010 FOR AND ON BEHALF OF NOBLE ENERGY, INC., AND THAT THIS MAP DOES NOT REPRESENT A BOUNDARY SURVEY, IT IS NOT A LAND SURVEY PLAT OR AN IMPROVEMENT SURVEY PLAT AND IT IS NOT TO BE RELIED UPON FOR THE ESTABLISHMENT OF FENCE, BUILDING OR OTHER FUTURE IMPROVEMENT LINES.

**NOTES:**

- 1) BEARINGS FOR THIS MAP ARE ASSUMED AND BASED UPON GPS OBSERVATIONS MADE BETWEEN MONUMENTS LOCATED AT THE NORTHEAST AND NORTH QUARTER CORNER OF SECTION 17, T.3N., R.64W.
- 2) HORIZONTAL DATUM IS NAD83.
- 3) VERTICAL DATUM IS NAVD88. ELEVATIONS ARE DERIVED FROM GPS OBSERVATIONS PROCESSED THROUGH OPUS, UTILIZING THE GEOID03 MODEL.
- 4) SEE VISIBLE IMPROVEMENTS EXHIBIT FOR VISIBLE IMPROVEMENTS WITHIN 600' OF PROPOSED SURFACE HOLE LOCATION.
- 5) SURFACE USE: AGRICULTURAL.

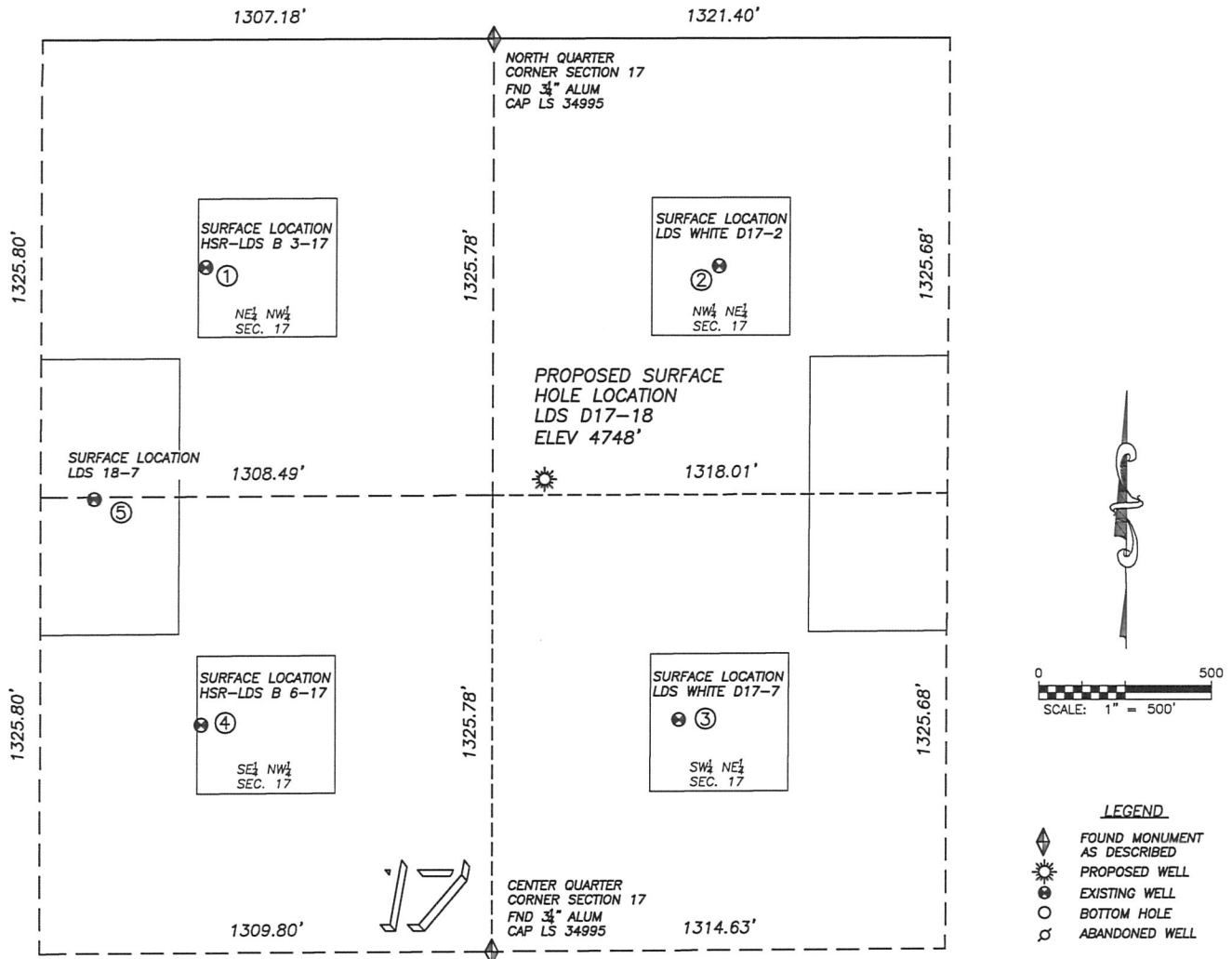
NOTICE: According to Colorado law you MUST commence any legal action based upon any defect in this W.L.C. within three years after you first discover such defect. In no event may any action based upon any such defect in this W.L.C. be commenced more than ten years from the date of the certification shown herein.



FOR AND ON BEHALF OF  
 DALEY LAND SURVEYING INC.,  
 Robert Daley, PLS 35597

# SITE SKETCH LDS D17-18

SECTION 17, TOWNSHIP 3 NORTH, RANGE 64 WEST OF THE 6TH PRINCIPAL MERIDIAN



①

**HSR-LDS B 3-17**

NE/NW SEC. 17  
661' FNL, 1782' FWL  
1160' NW OF PROPOSED  
SURFACE HOLE LOCATION  
LAT. N40.23082°  
LONG. W104.57800°  
EL: 4749'  
PDOP 3.0

②

**LDS WHITE D17-2**

NW/NE SEC. 17  
662' FNL, 1985' FEL  
800' NE OF PROPOSED  
SURFACE HOLE LOCATION  
LAT. N40.23084°  
LONG. W104.57268°  
EL: 4745'  
PDOP 2.1

③

**LDS WHITE D17-7**

SW/NE SEC. 17  
1981' FNL, 2092' FEL  
800' SE OF PROPOSED  
SURFACE HOLE LOCATION  
LAT. N40.22722°  
LONG. W104.57308°  
EL: 4747'  
PDOP 2.0

④

**HSR-LDS B 6-17**

SE/NW SEC. 17  
1989' FNL, 1775' FWL  
1223' SW OF PROPOSED  
SURFACE HOLE LOCATION  
LAT. N40.22718°  
LONG. W104.57804°  
EL: 4752'  
PDOP 1.3

⑤

**LDS 18-7**

SE/NW SEC. 17  
1332' FNL, 1463' FWL  
1306' W OF PROPOSED  
SURFACE HOLE LOCATION  
LAT. N40.22898°  
LONG. W104.57915°  
EL: 4750'  
PDOP 1.2

## NOTES:

- 1) THIS DOES NOT REPRESENT A BOUNDARY SURVEY
- 2) THE LATITUDES AND LONGITUDES SHOWN ARE REFERENCED TO NAD83
- 3) DATUM FOR ELEVATION IS NAVD88. ELEVATIONS ARE DERIVED FROM GPS-RTK OBSERVATIONS PROCESSED THROUGH OPUS, UTILIZING THE GEOID03 MODEL.